

Mystery of the maze

Communication is the act of transferring information between people.

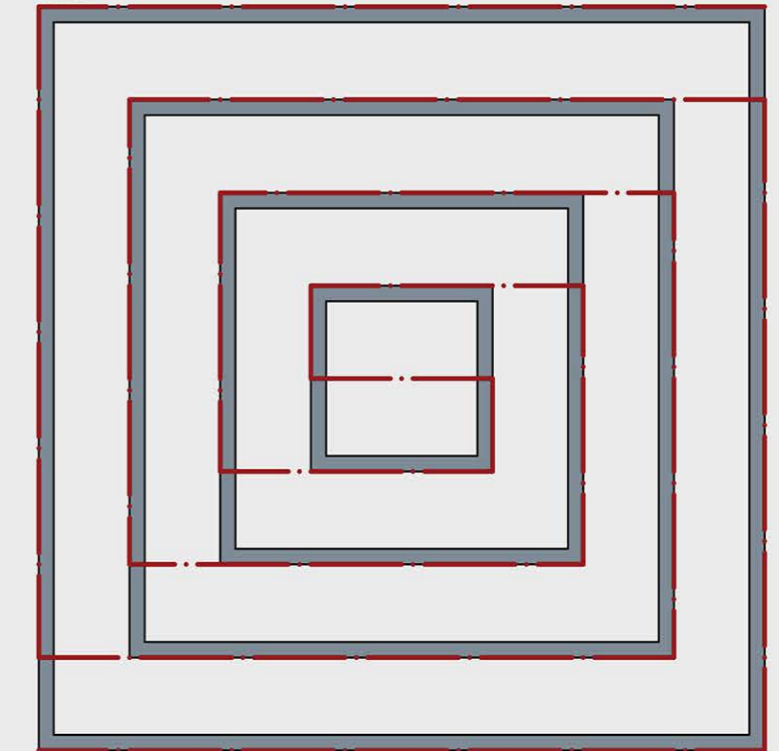
And with the evolution of humanity communication became a lot more complex.

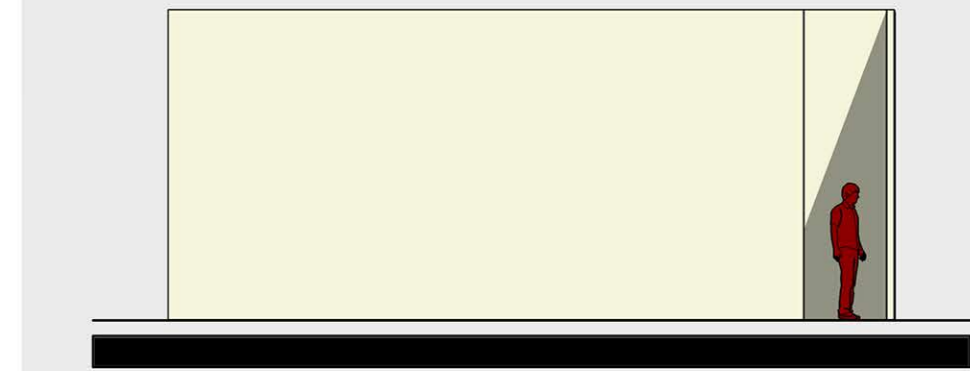
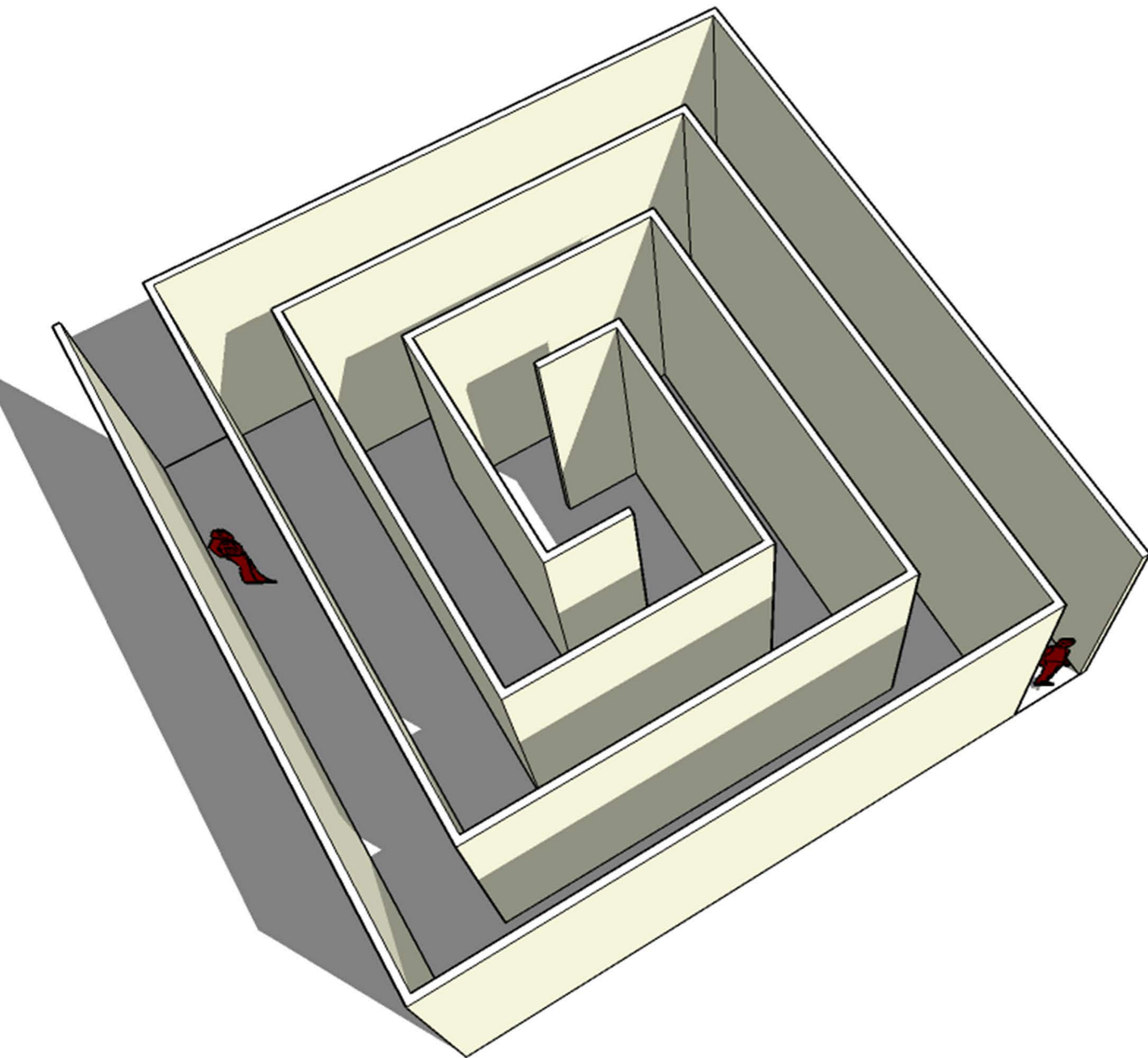
Nowadays there are several ways to communicate and interact: telephone, radio, television, letters, e-mails, Internet and social media, all of which can help people to reach out to each other any time anywhere.

But what about face-to-face Communication where you can interact using language, body language, gestures and even ignoring others.

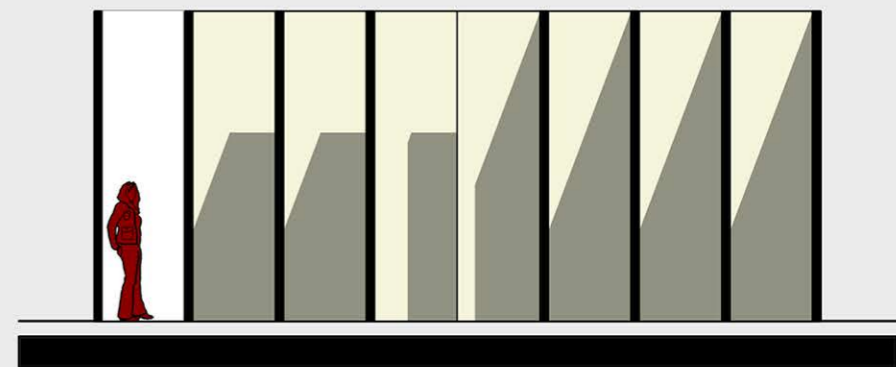
With so many ways offered by modern technology, we tend to use a non-face to face communications because it is easier and much more comfortable.

A four walls room is the simplest form of architecture and turning these walls to a spiral plan can offer a mystery, which can lead people's curiosity to enter and try to solve. The center of the room is the end of two spiral roads where people can meet each other and solve the mystery of the maze room using a face-to-face way of Communication.

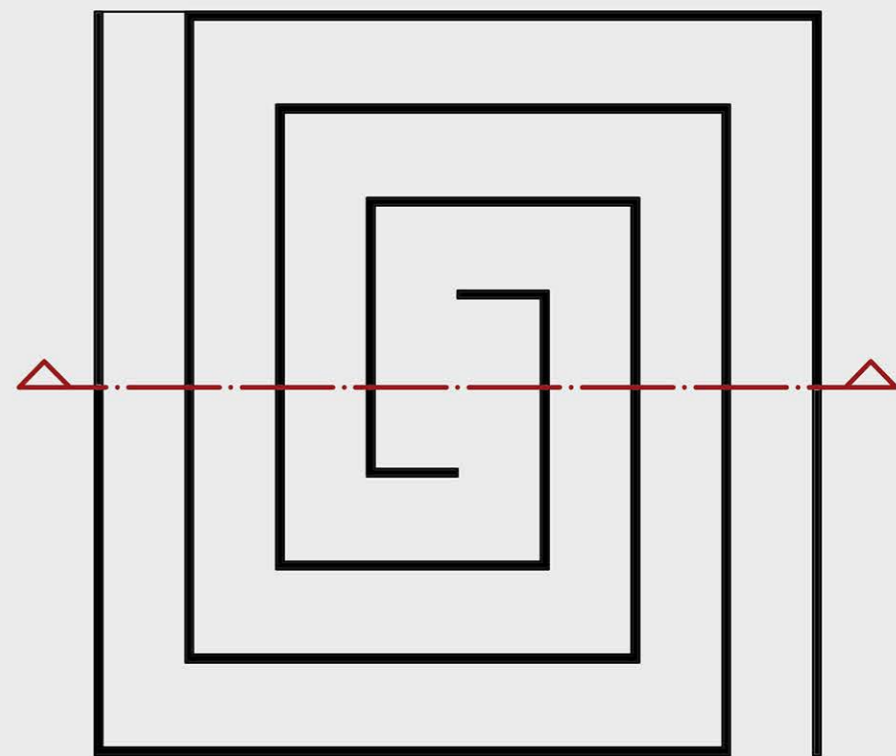




Elevation



Section



Plan