

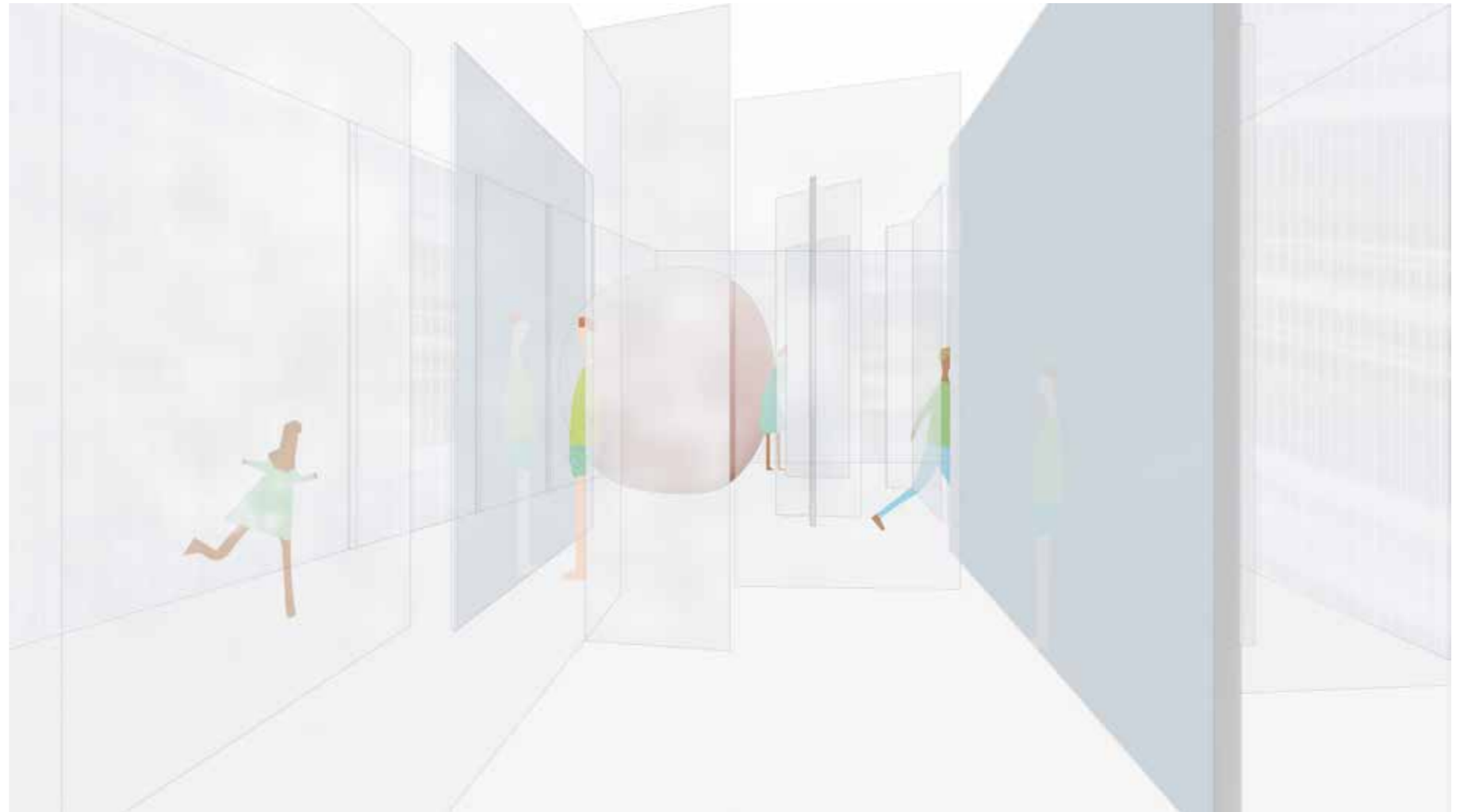
# FLUXUS

With the influence of the technology in our daily life, the way of communicating is changing radically. One could say that we are getting so dependent on communicating through social media and text messages, that we often feel incapable of communicating in real life. Due to this, we are slowly losing the relationship with reality and each other.

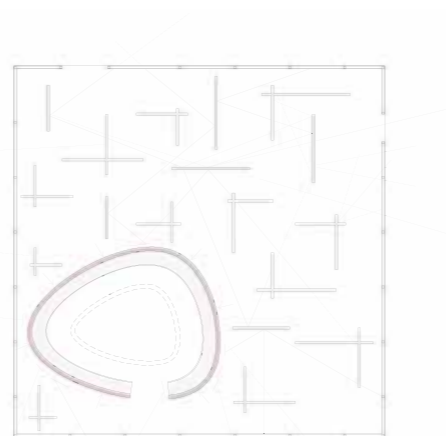
With our room of reflections, we want to make the communication of the social media into an experience. The neutral shape of the square does not reveal the complexity of the interior room. This gives the person entering this space an unexpected experience.

The inner space - the web- is divided into a multitude of smaller spaces that are delimited by a semi-transparent glass that has a reflective characteristic. Due to the reflecting materials and their positions, the surroundings become unclear, infinite.

To contrast this web of reflections, we want to have a serene place that due to it's warm and opaque material will stop the infinite movement of the reflections. To do that, we place an amorphous shelter to contrast the very mathematically constructed spaces. This cocoon opens up to the sky, brings in light and reveals who you're really sharing the space with.



Perspective



The web - fragmented communication. Analogue representation of the digital presence.



Transparent wall material



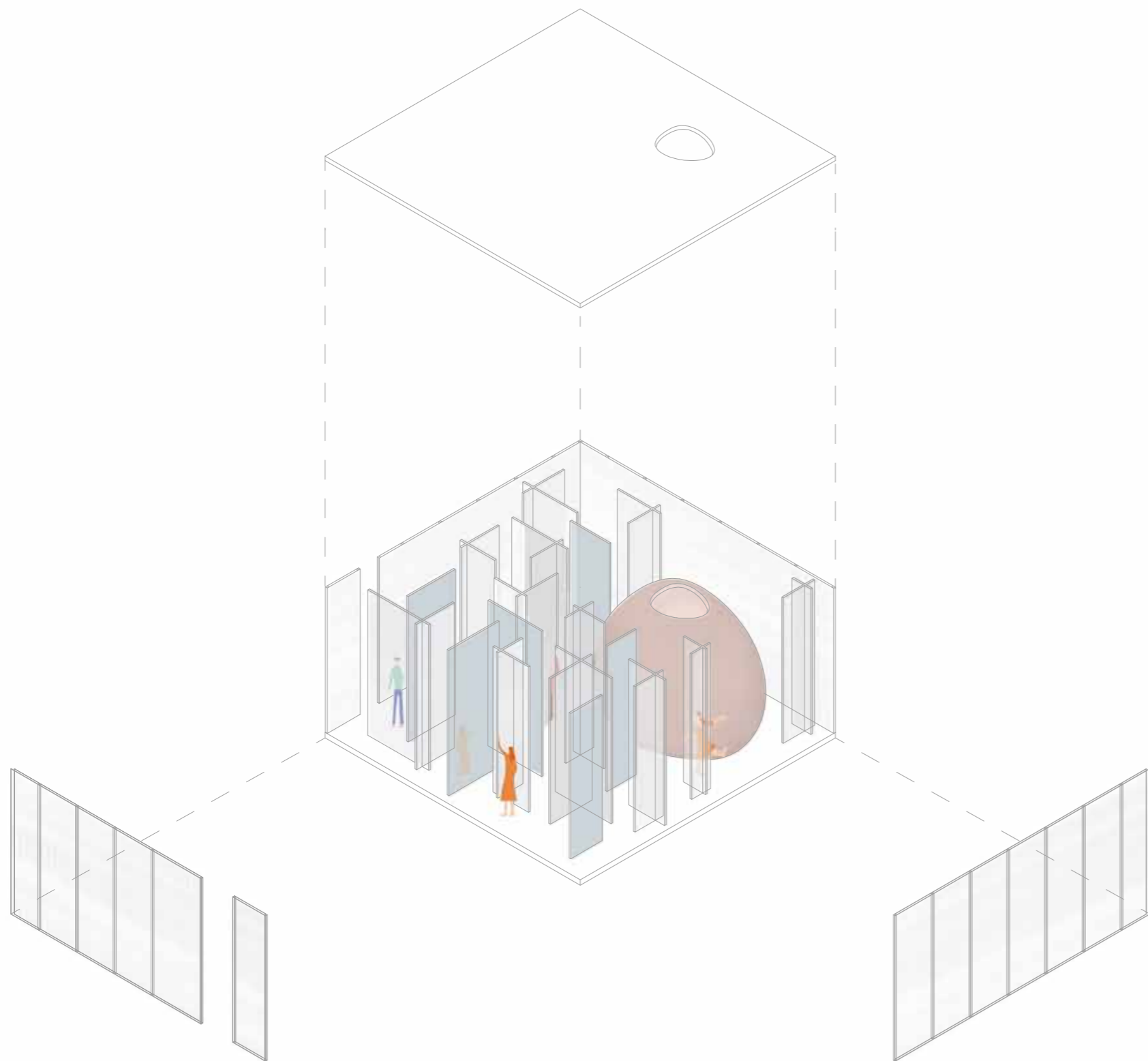
Mirror wall material



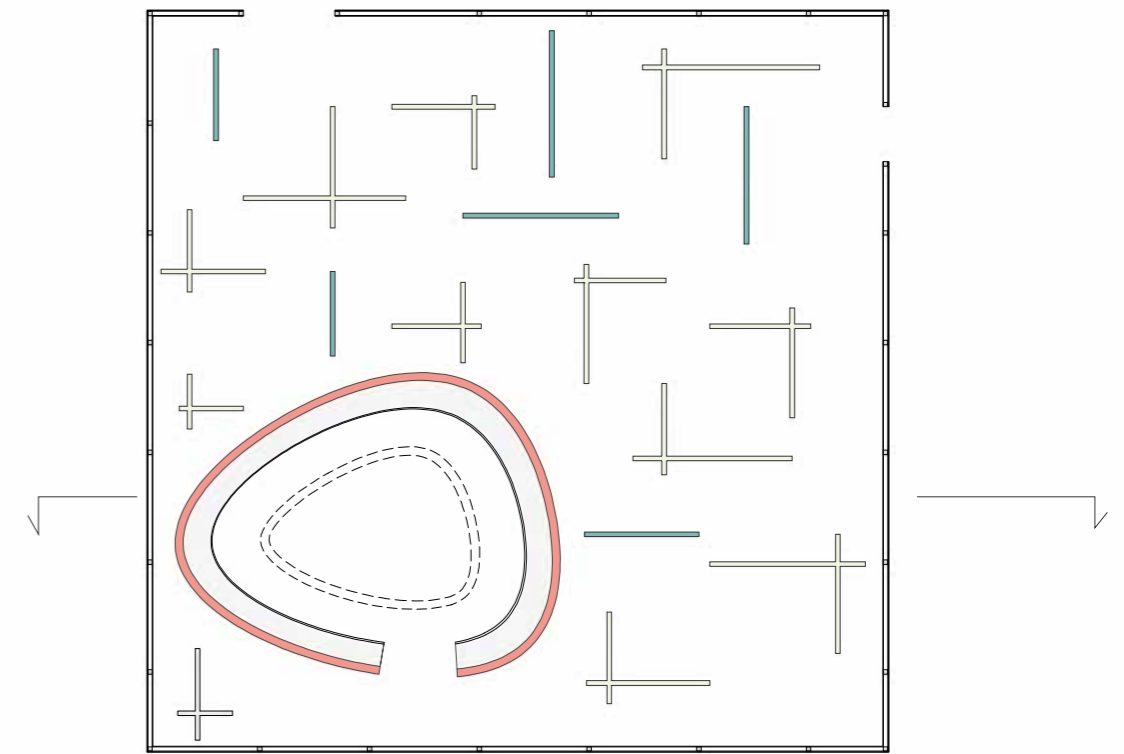
Non reflecting wall material



Physical meeting point.



Axonometric drawing



Plan



Section

