

"FILL" FREE

The spatial concept:

In order to fill the criteria of the restricted budget, the concept seeks for a contemporary version of the craft traditions. Neither explicitly modernist nor relying strictly on traditional forms, it creates a unique educational environment able to cultivate and inspire next generations.

The free form creates a structure that is descriptive through a practical path, without being too literal it forms the kind of spaces that children inhabit and would naturally interact with in a sense of flow and energy. Imagine being a meter tall and dashing around the snail shaped building of your school. Thus, the space remains irrevocably efficient and organized, inspiring therefore movement and playfulness.

For accommodating 200 primary school children in a limited space, the principle is to keep this space in constant motion through clear and organized circulations.

As a result, the curved form contrasts with the regular geometry of the pre-existing village's buildings, and try to catch up the free landscape contour lines.

On the one hand, the softly curving stone walls are welcoming and encouraging feelings of permanence and security. On the other hand, the rounded shape of the building and the panoramic view opened on the landscape encourage the children to go out and explore nature.

The children will interpret it as a welcoming way out for a meal break overlooking the landscape, or for a folk literature moment through the Bouyei fairy tales and fables while their limitless imagination escapes across the panoramic views.

The technical concept:

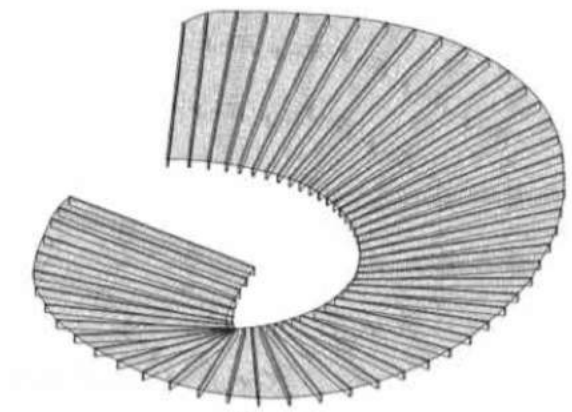
Choosing the stone as the main building material seems a logic choice considering the semi-tropical climate, the Bouyei's stone masonry expertise and the rich mineral local resources.

The committed position here is to use the gabion wall system, which consists of a metal mesh cage filled with loose material.

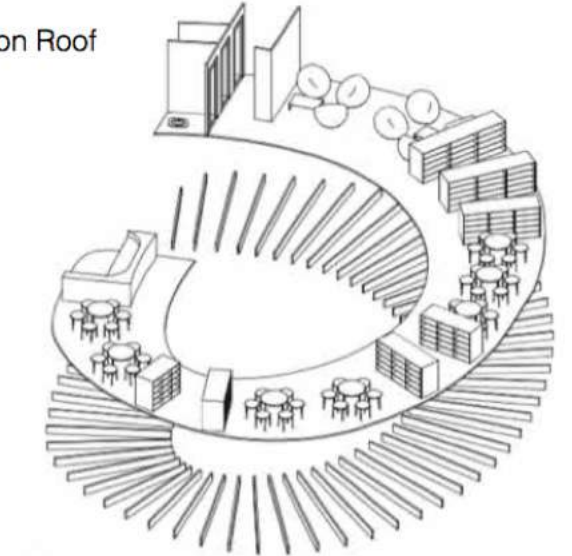
The first step is to set up a perimeter of a metal mesh cage that can easily take the desired curved shape, before start filling it with local stones and the left over rubble from the destructed existing building. In addition to present all the orderly rock wall's advantages (including structural stability, humidity and heat resistance), the gabion wall offers the advantages of free form construction through their metal mesh cage.

Other advantage, the gabion wall stand as a climatic device offering natural cross ventilation according to how porous the wall is. Fixed windows on external facing walls offer natural lighting, and finally, transparent PVC curtains reduce the climatic exchanges between the inside and the outside.

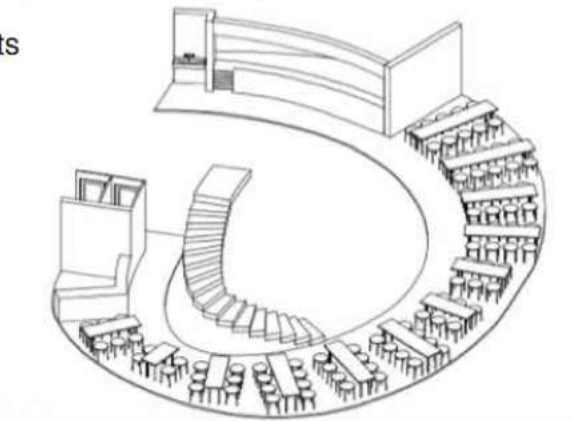
In a nutshell, this system offers an innovative direction through an open community volunteering project using both local stones and vernacular traditional Bouyei expertise.



Bouyei's ston Roof

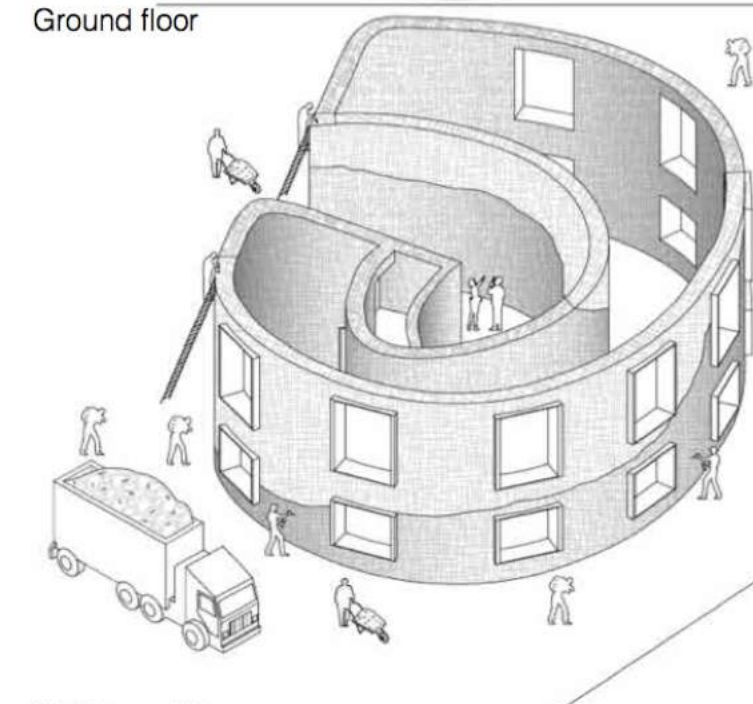


R+1

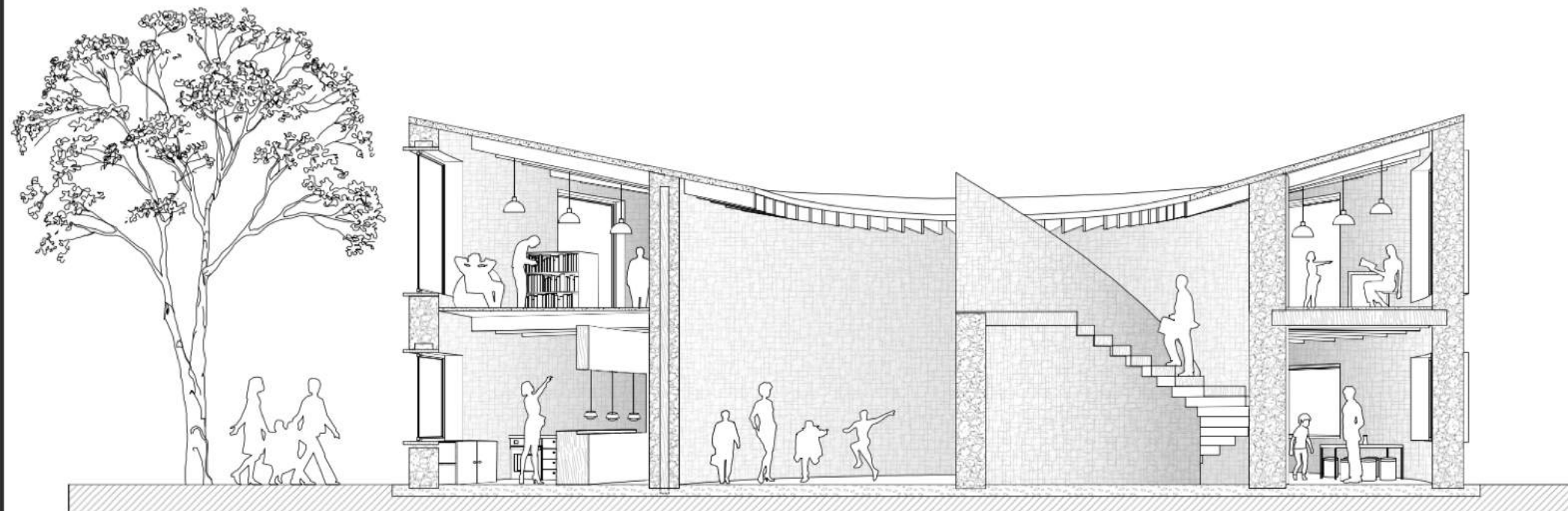


Timber joists

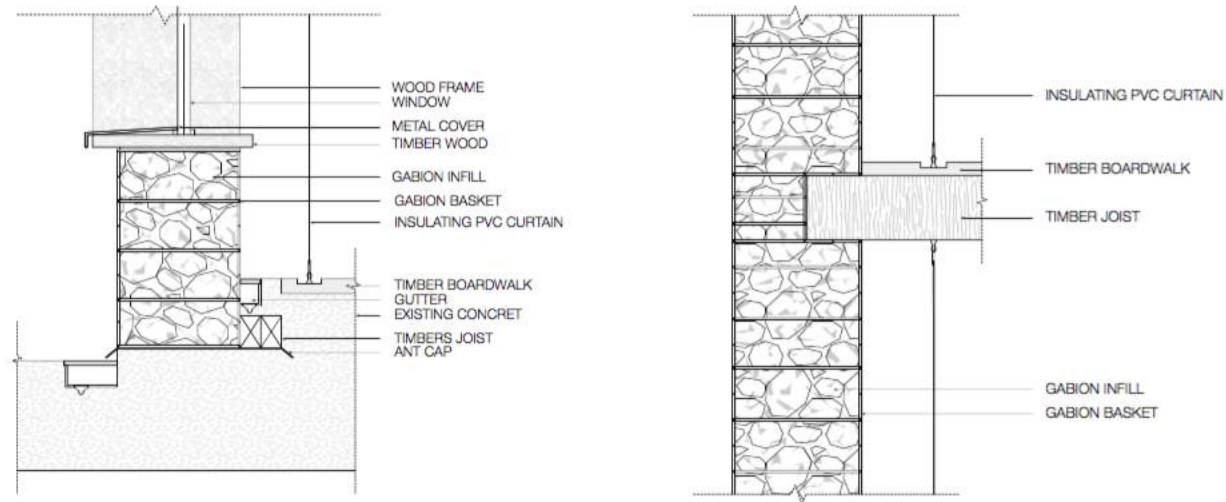
Ground floor



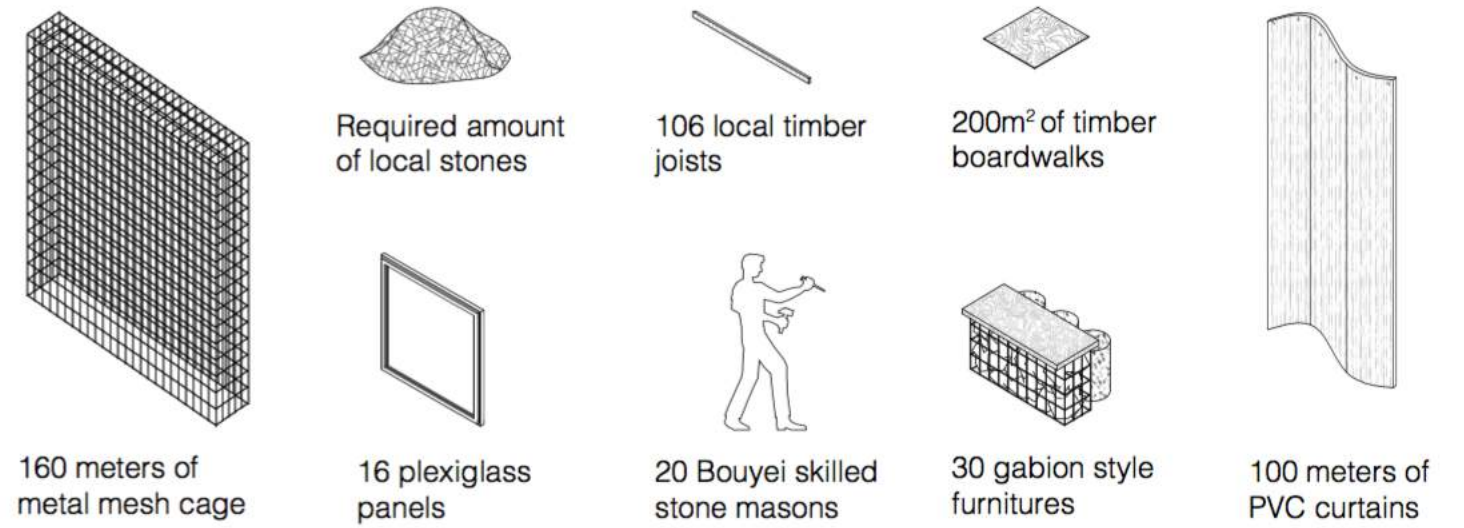
Gabion wall in progress
Exterior geometric view



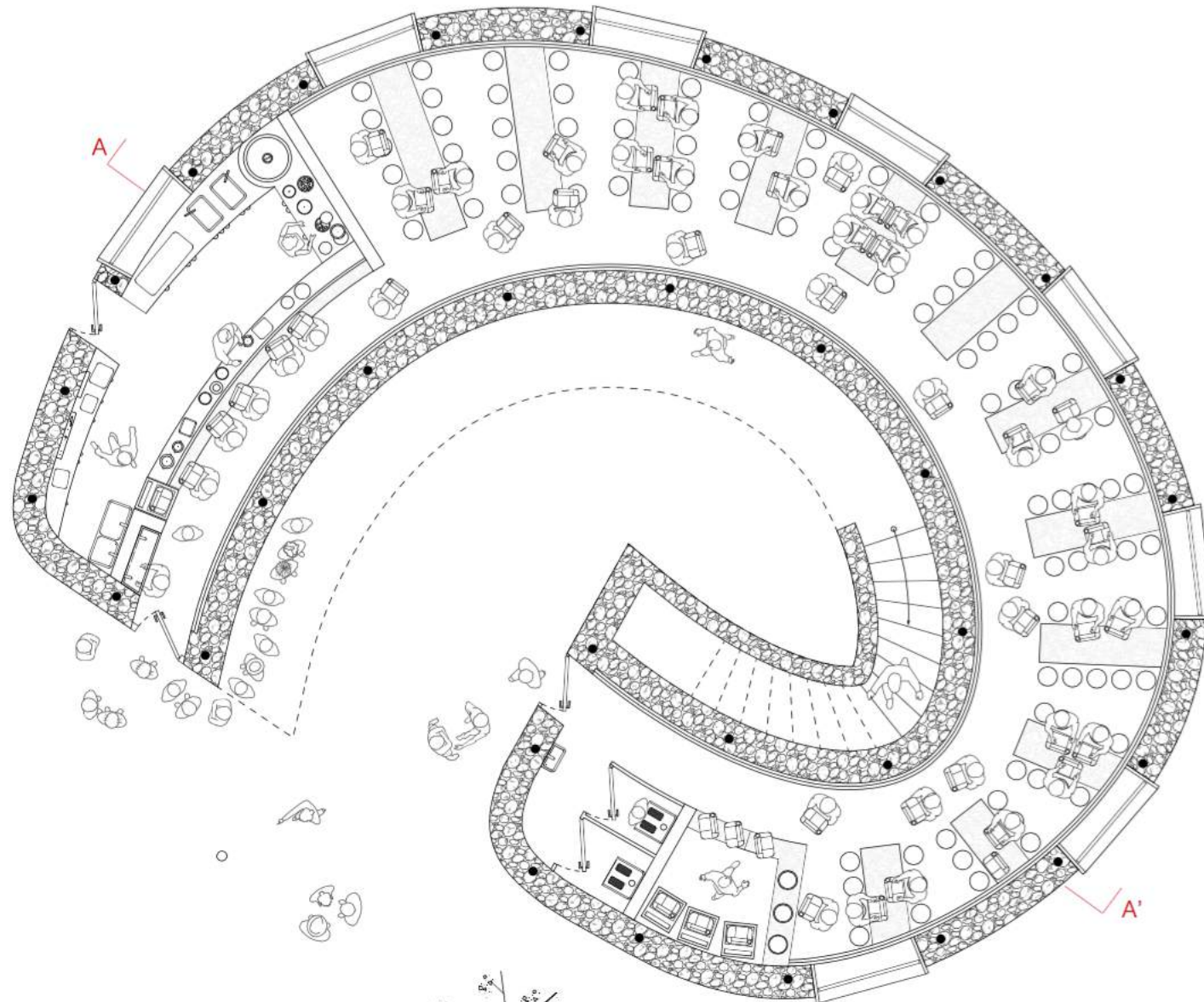
Perspective section AA' 1:100



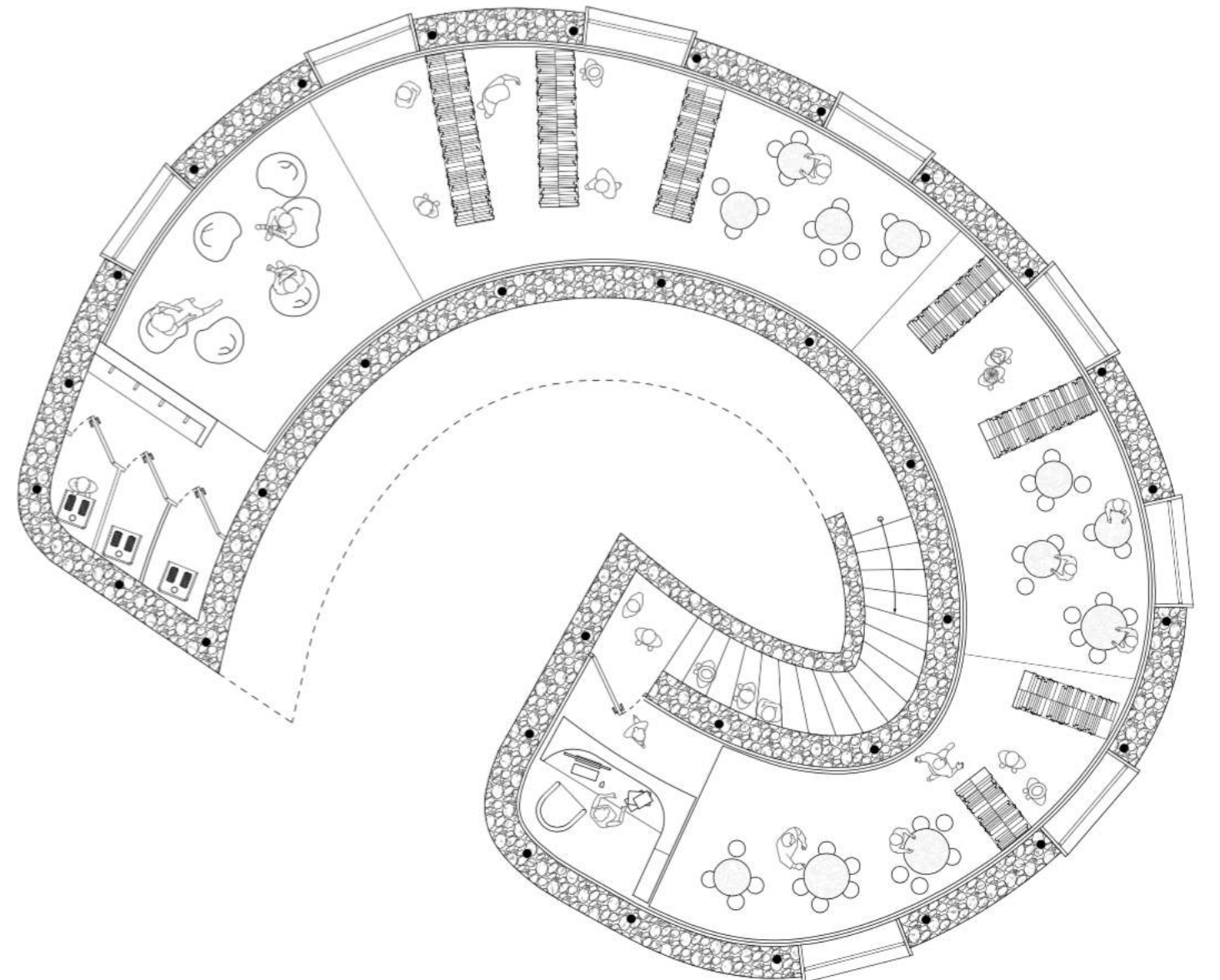
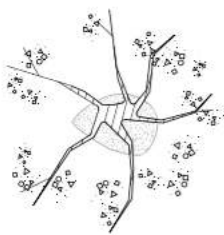
Detail 1:20



Required resources



Ground floor 1:100



R+1