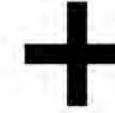




Structure  
Architecture



Furniture  
Bookshelf



Play  
Joy, Attraction

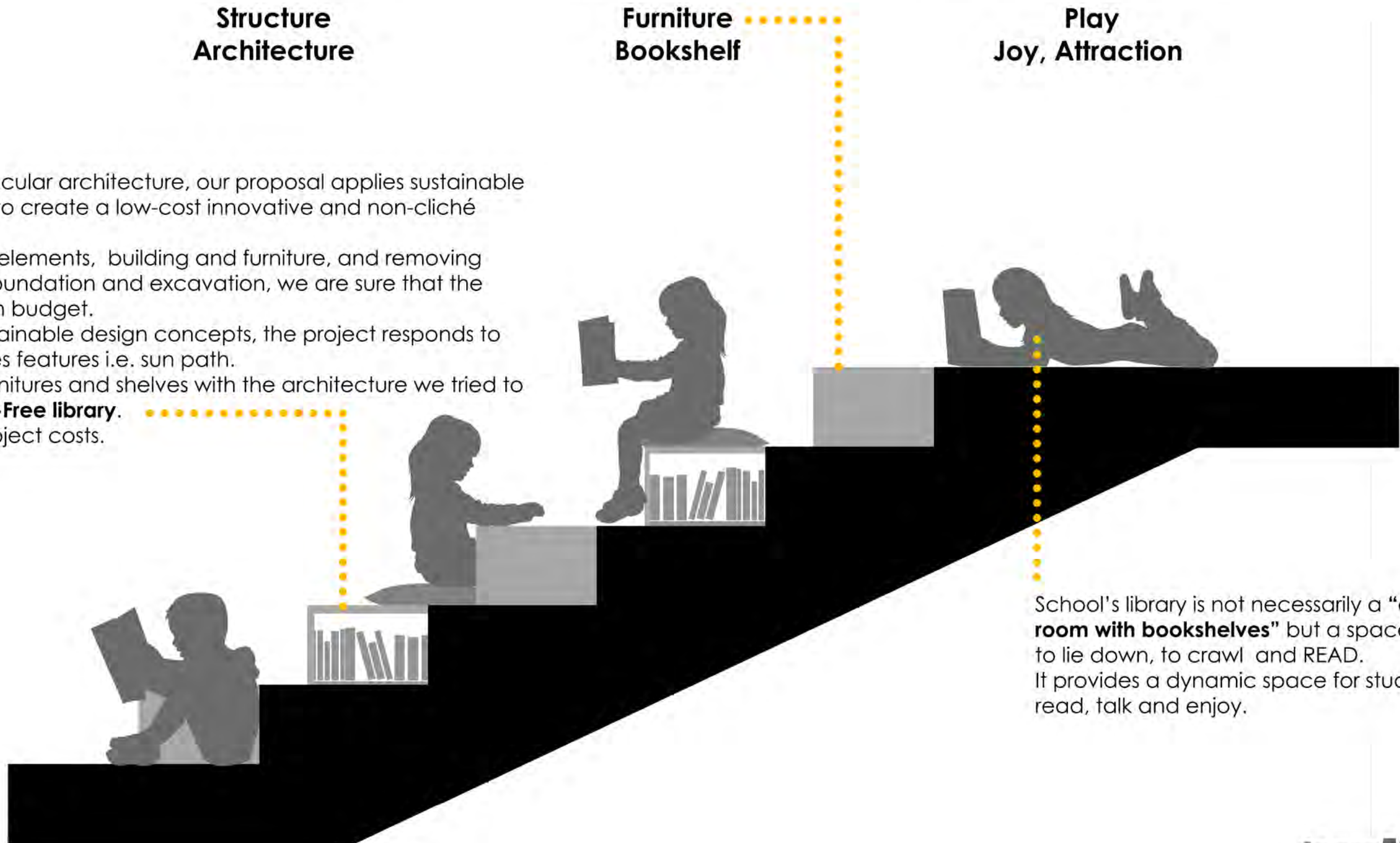
Informed by vernacular architecture, our proposal applies sustainable design principles to create a low-cost innovative and non-cliché library space.

By merging costly elements, building and furniture, and removing expensive parts, foundation and excavation, we are sure that the project stays within budget.

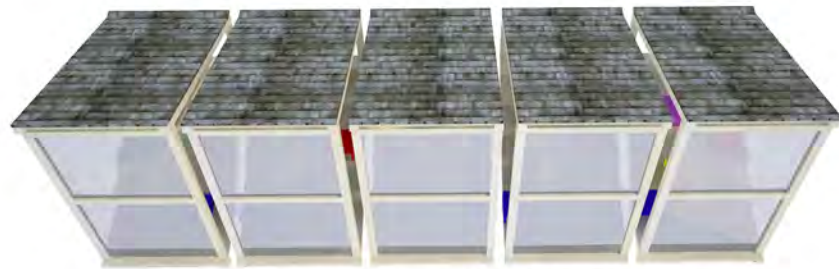
Implementing sustainable design concepts, the project responds to the immediate sites features i.e. sun path.

Combining the furnitures and shelves with the architecture we tried to create a **Furniture-Free library**.

This will reduce project costs.



School's library is not necessarily a **“class-room with bookshelves”** but a space to sit, to lie down, to crawl and READ. It provides a dynamic space for student to read, talk and enjoy.

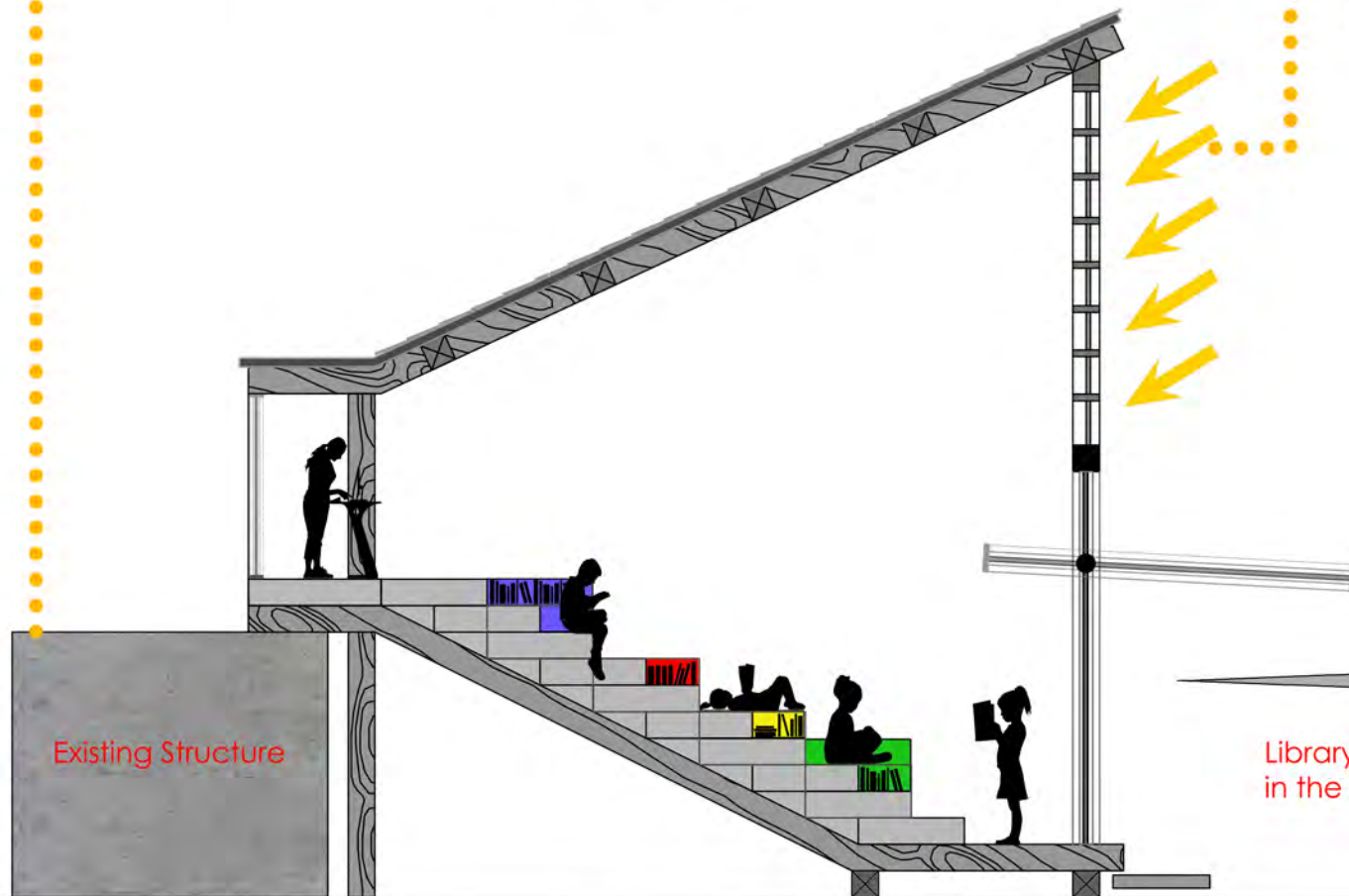


phase 1 phase 2 phase 3 phase 4 phase 5  
3000\$ + 3000\$ + 3000\$ + 3000\$ + 3000\$

The semi-closed spatial composition embraces the values of local architecture, rendered in the intimately joint interior and exterior compound. It epitomizes the theme by offering a seats for spectators of school events. The roof, interior finishing as well as the wooden structure could be locally supplied.

The front glass wall lets the direct sun light leak in, creating an interior with a soft ambient glow.

The structure is supported by existing structure and reinforced with wooden poles. Existing building will be remodeled and used as service and storage space.



Library turns to spectator seating in the school's events

