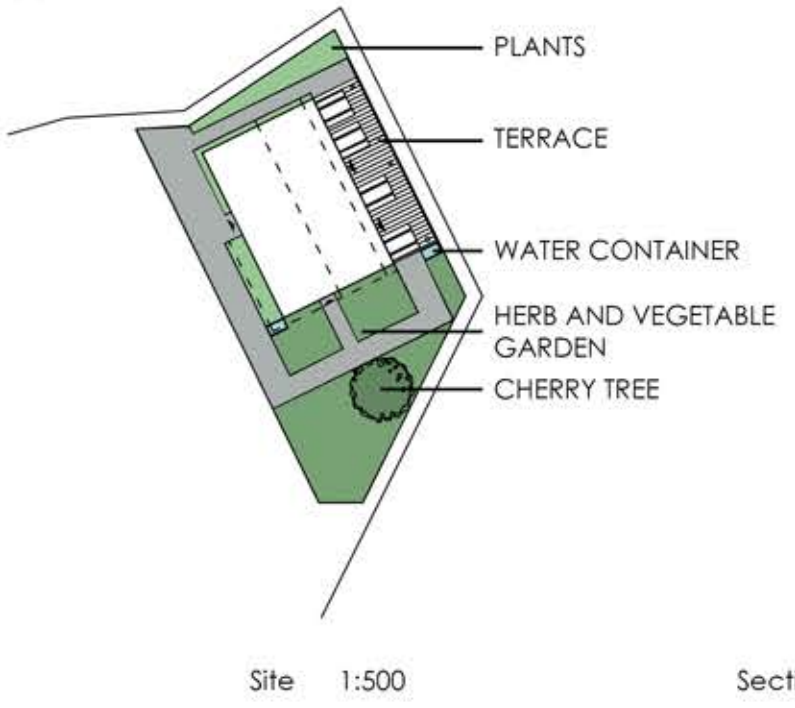
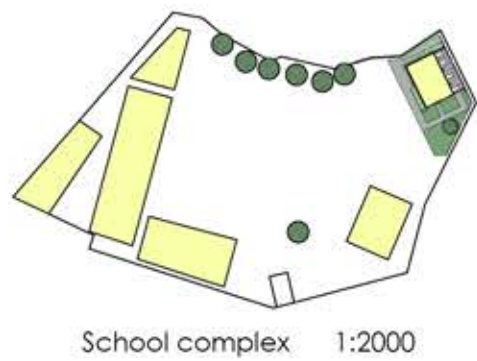


CANTEEN AND LIBRARY BUILDING FOR THE LIANG MENG SCHOOL COMPLEX

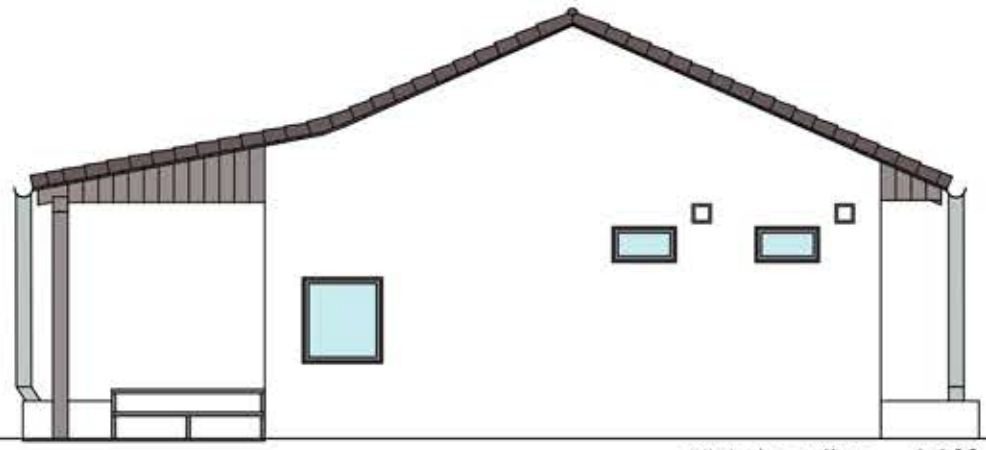


This building was designed to create the most useful space for canteen and library for primary school in Puan City. Because of 100 m² limit there is one big room for canteen and library at the same time, but these two functions are divided by moveable wall. This wall has doors and it is made of light wood. It is moving on rails which are placed along longer edges of room. This wall makes this space more adaptable to an actual needs. If it is time for a meal for children then book racks on wheels are moved close to each other and this space is closed by moveable wall. On the other side of this wall will be more space for tables. Tables are foldable, so if they are not used they are standing folded in the corner of the room. To make more space for children to have a meal there is roofed terrace with tables. It is also a perfect place to admire beautiful views from this place.

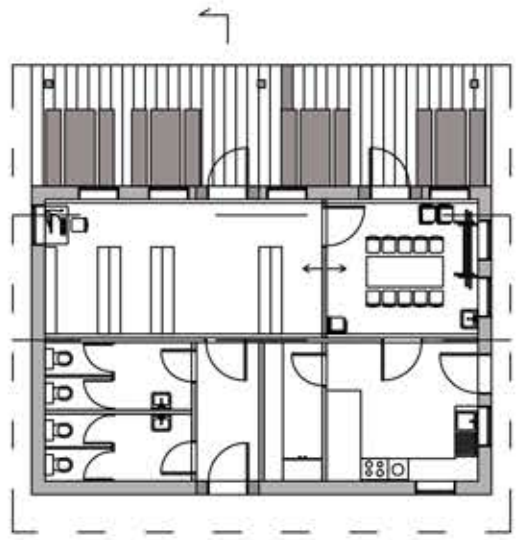
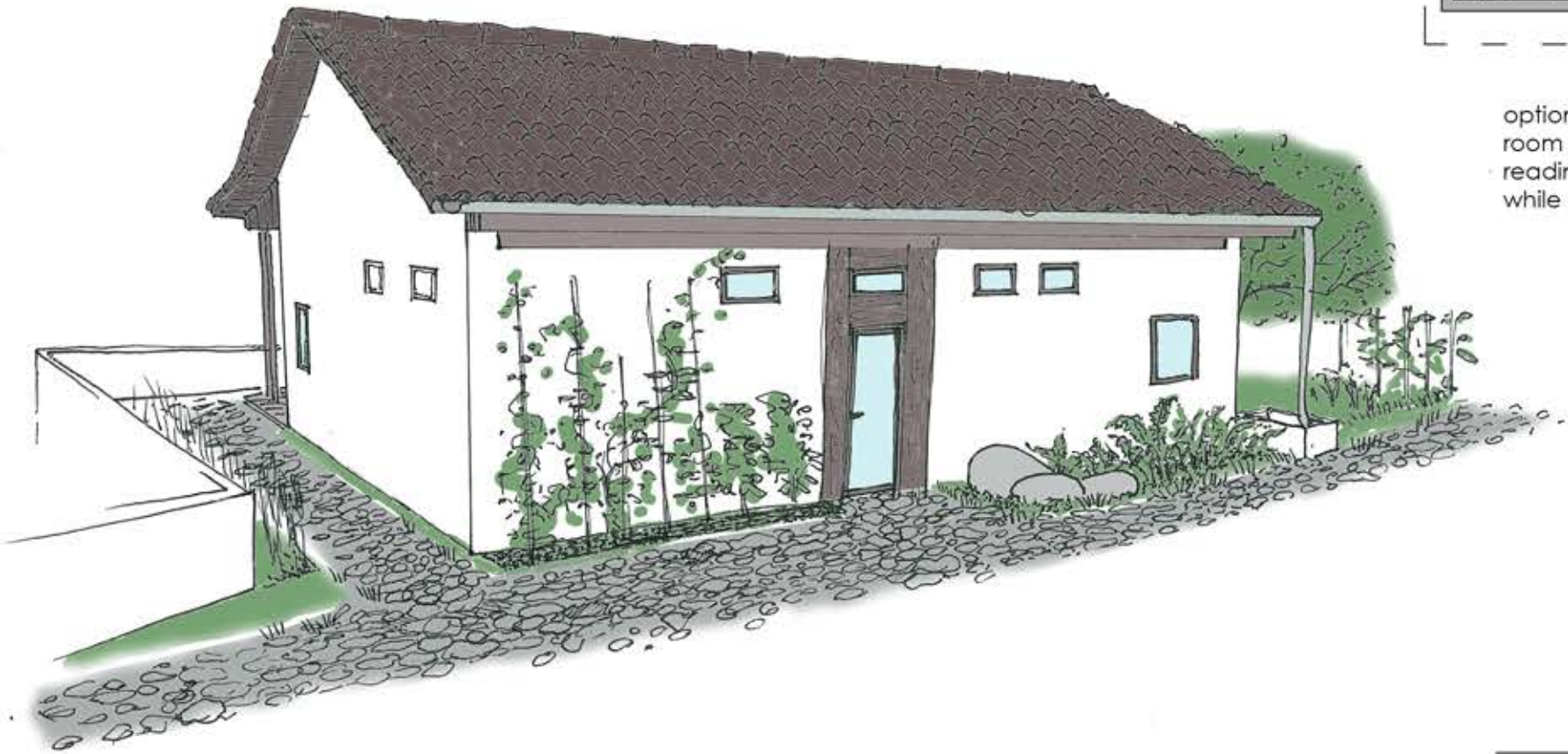
In this building there are few other rooms. Toilets for girls and boys. Vestibule with glazed doors, which allows to see through this building from outside (main entrance doors and door to terrace are also glazed). Because of it there can be seen a promise of a beautiful view of hills.

In this building there is a kitchen with a storage. From kitchen there is a direct doors to garden which is situated on the south part of this site. In this garden is a cherry tree, many herbs and vegetables which can be used to cook a meal. Water from roof is kept in two containers to water the garden.

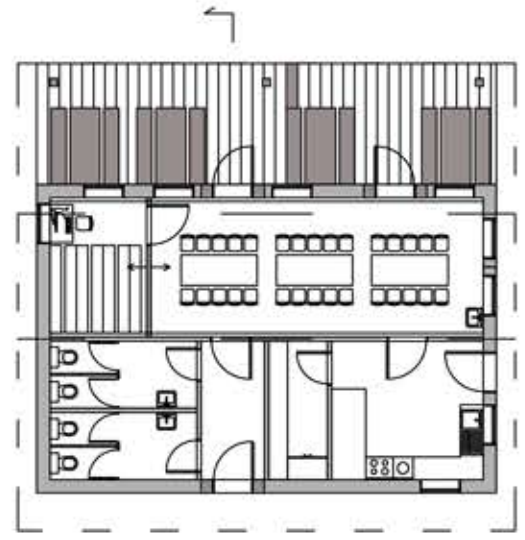
This one story building is made of stone foundations, brick walls with white plaster and timber.



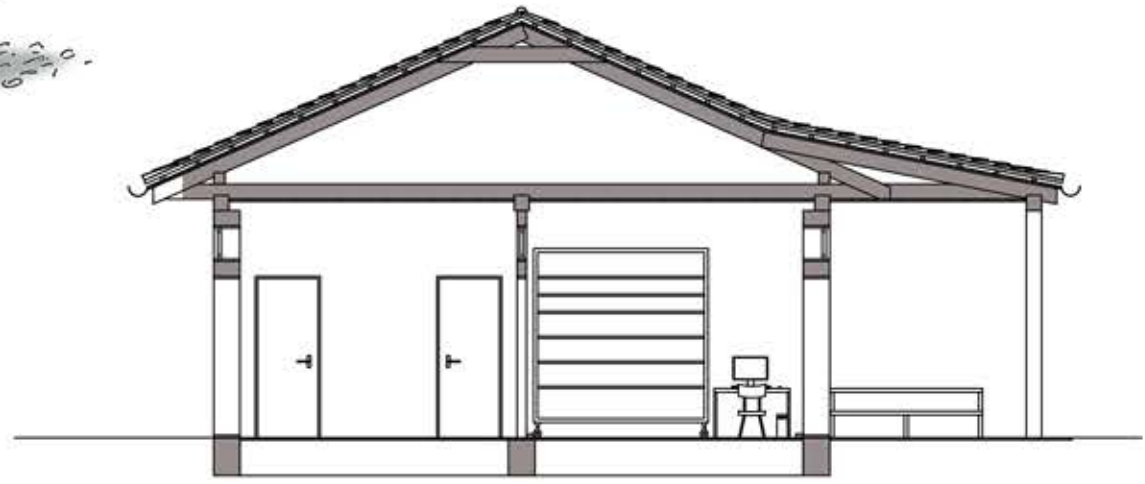
CANTEEN AND LIBRARY BUILDING FOR THE LIANG MENG SCHOOL COMPLEX



plan 1:200
option with fully used library, room next to it might be used as reading area, or support area while preparing meals



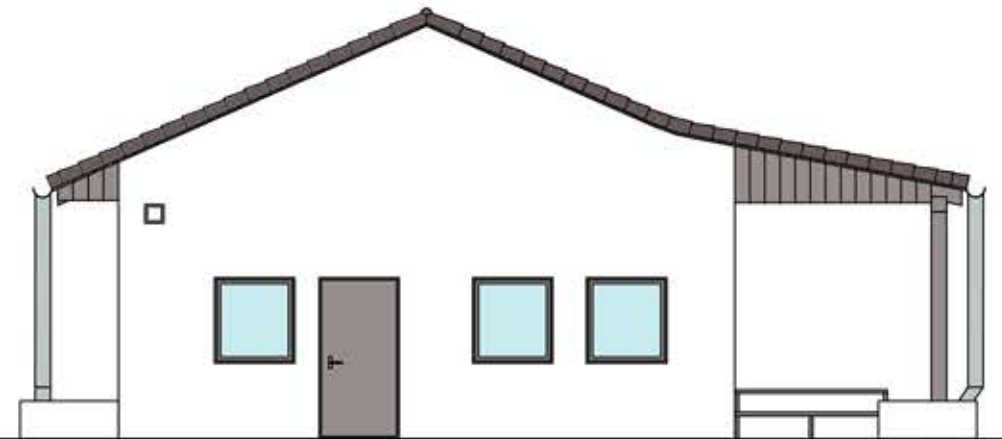
plan 1:200
option with fully used canteen, library room is reduced to minimum.



section 1:100



NE elevation 1:100



SW elevation 1:100