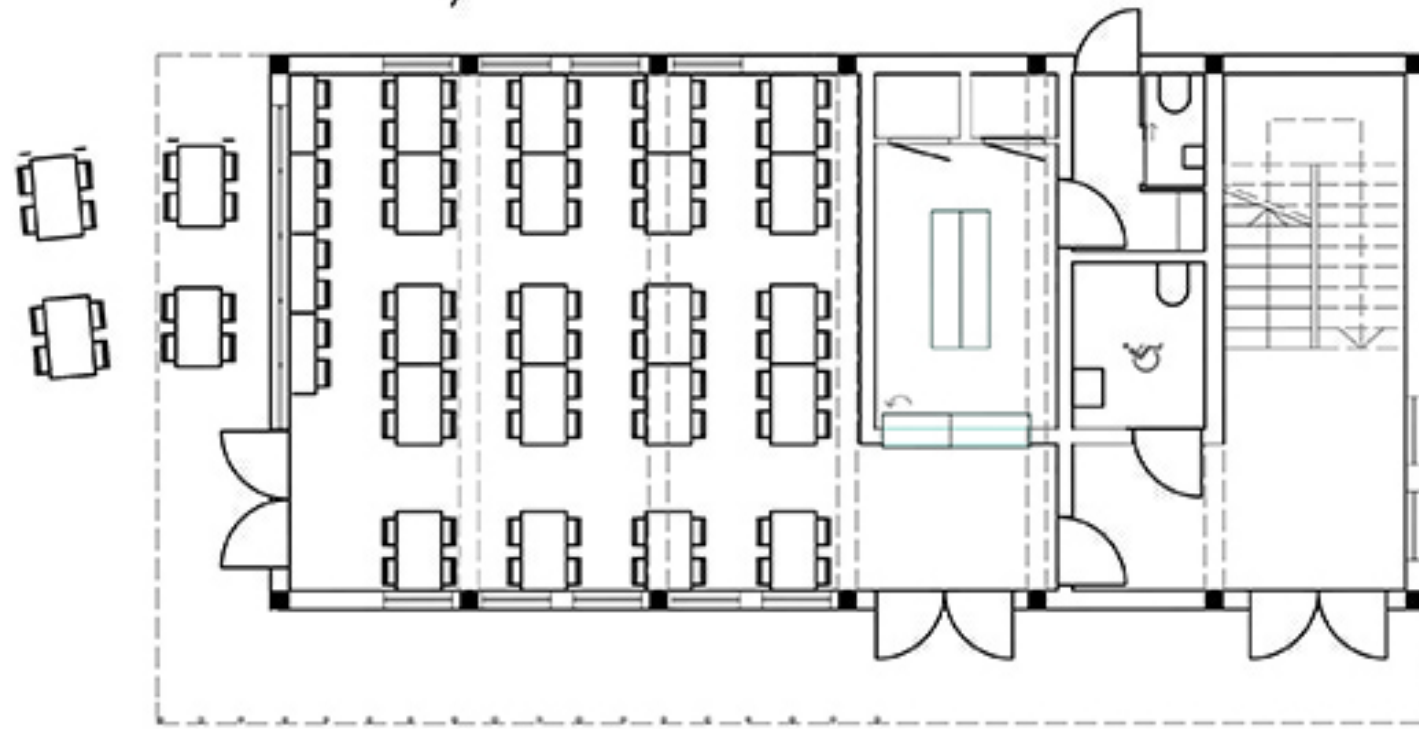
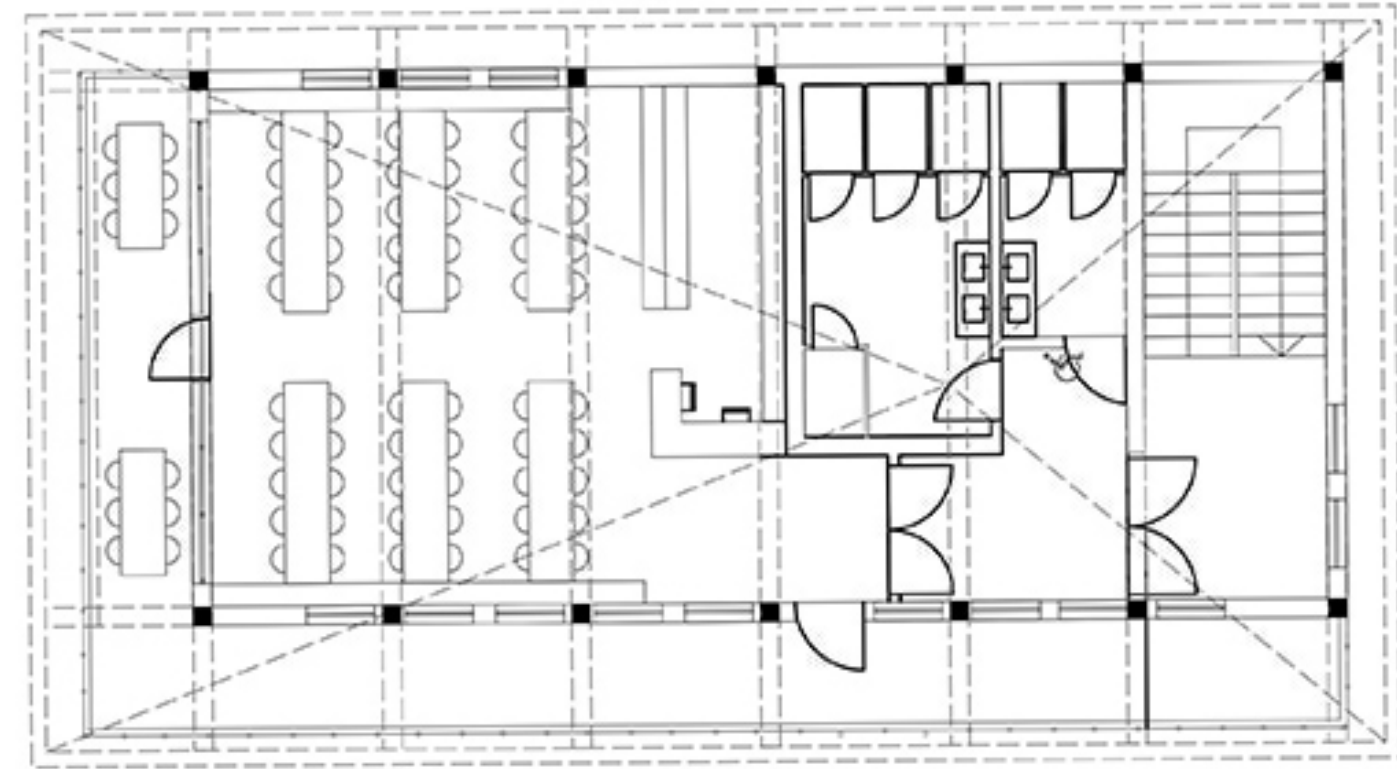


The design proposal is focused on doing as much as possible with a minimum amount of effort and money. From the choice of materials, to architectural discourse and spacial design, our main concern was the comfort of the pupils from the school. The structure of the building is as simple as possible, in order to be easily built, for it follows a grid of timber columns and beams. In between the columns we suggest either brick or panel walls. The timber beams are visible in the interior and give a cosy atmosphere to the canteen. In the library the roof structure is visible for the same effect. There are some exterior spaces designed to be used during summer for both canteen and library. They are positioned in order to have a view over the valley and are shadowed by a terrace and the roof structure. On the façade, we suggested the use of bamboo, for it is a local and very ecologically friendly material. This can be used also in the design of the interior ambience as lightweight walls or furniture.



ground floor sc 1/100



first floor sc 1/100

