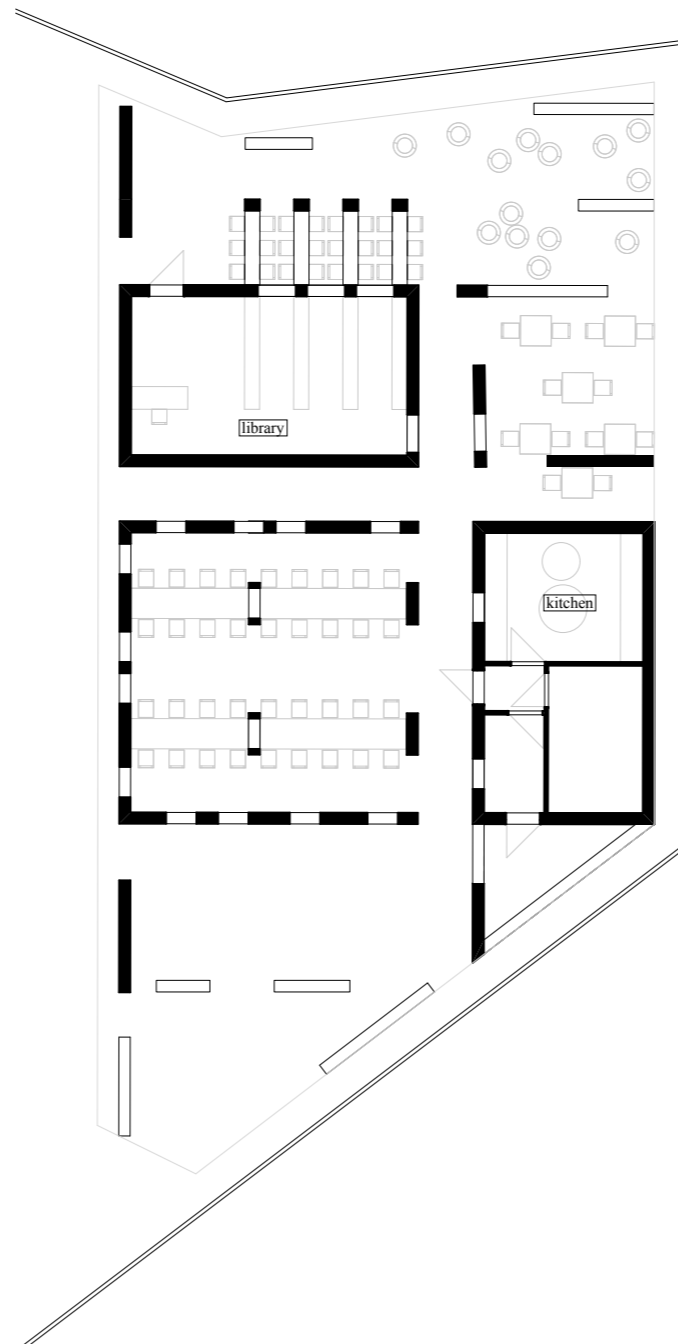


Playscape

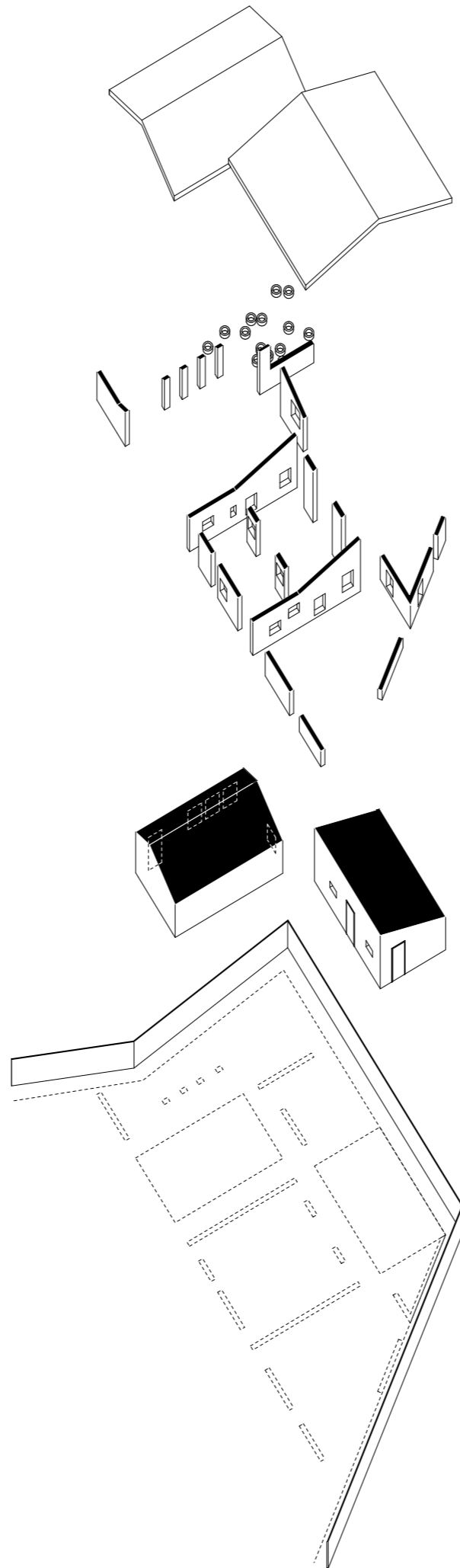
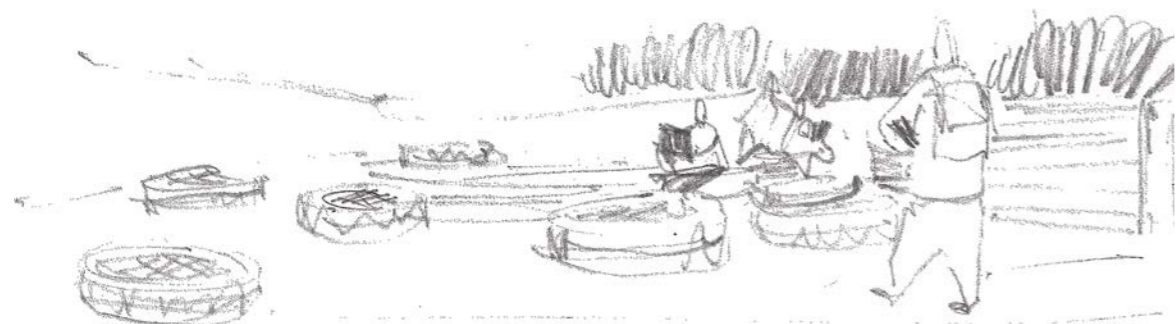
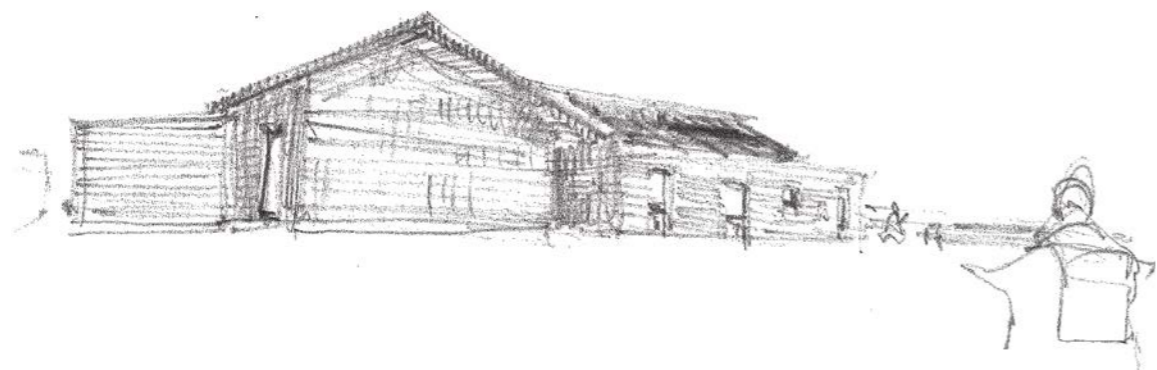
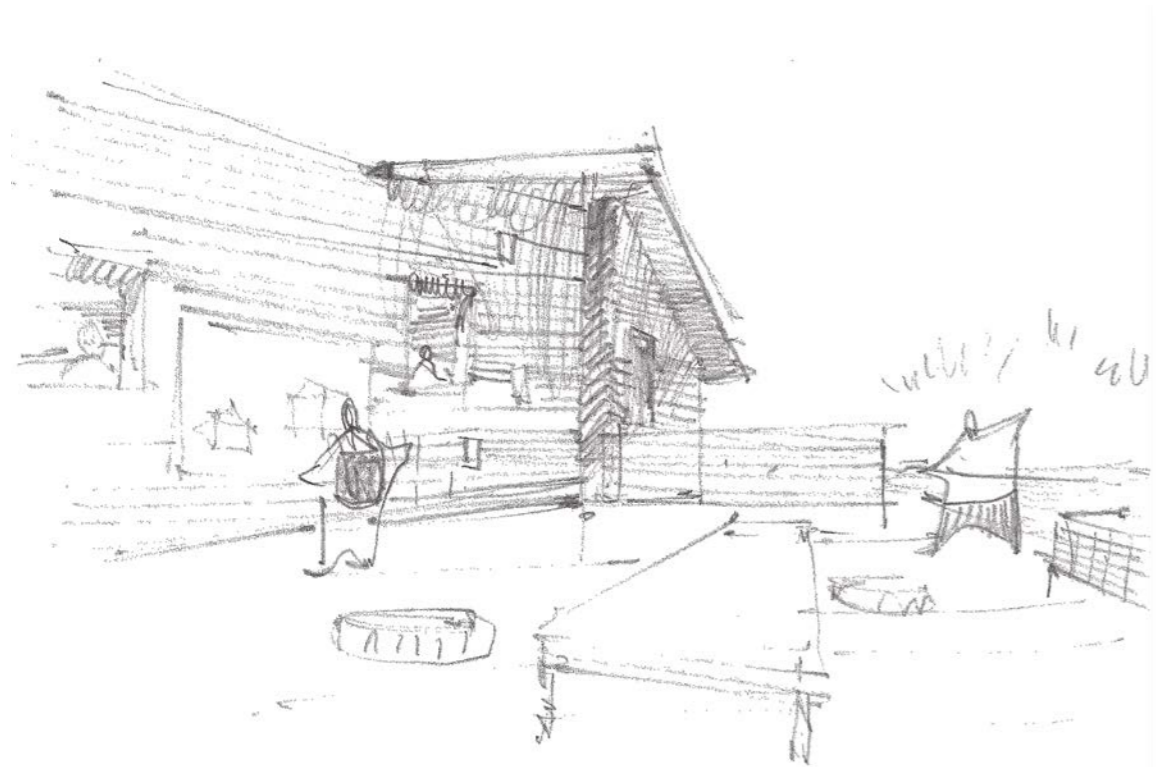
labyrinth

The space is set in between different walls - solid, high, short, semi-transparent. It is shaped to be a perfect place for children, where diversified functions are held. Starting from the traditional form of house it ends up with archeological labyrinth-like plan, which creates closed, open and semi-open spaces that are able to contain all of the games and actions.



1:200

team 5672



Labirynth-shaped structure determines openness and accessibility of the building. The adult-controlled areas are set in closed cubes (library and kitchen); then the dining and reading rooms are situated underneath the roof, but not as a closed zones; and on the ends of these areas we get space controlled entirely by kids, where they can do whatever they want.

openess of space

Used materials are the one that are used in traditional Buyi architecture: tiled roof, wooden roof construction, wooden furniture, dilatation, concrete lintel, bricks.

Walls are interrupted by different openings: small in brickwork, bigger for windows and biggest ones for doors. They have different heights to be used not only as wall, but also as bench, table, shelves, playground.

scheme of construction

