

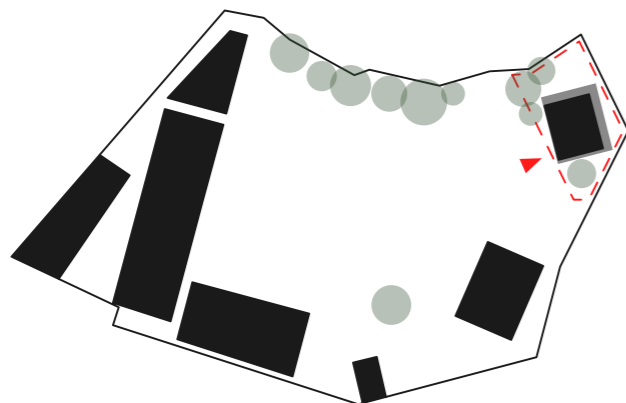
Treehouse

A child's treehouse is its sanctuary, filled with fun activities and secrets. The treehouse library and canteen is supposed to be a user friendly and a flexible space for the kids and staff of the LiangMeng School.

The design is inspired by the regions traditional *diaojiailou* houses and practical building techniques. Its main design goal is to embrace the buildings structure and make it a unique element that is visually enjoyed by its users. Orientation and openings should prevent it for overheating in the sun and focus on indoor and outdoor spaces.

The ground floor is an open multiuse plan useful for dining and as a library study hall. It could also be used as a small theater or for other gatherings just by rearranging the furniture. Big sliding panels filter the sunrays letting in light. They can open up the façades, extending the space to the outdoor platform.

The upper balconies are inspired by classical library buildings wrapping around a high ceiling center space. Walls are covered with bookcases and on the deck is a small reading nook. The second floor feels like a heavier mass that is floating in midair, held up by the tree branch like structure. This treehouse is a sanctuary filled with possibilities and knowledge.

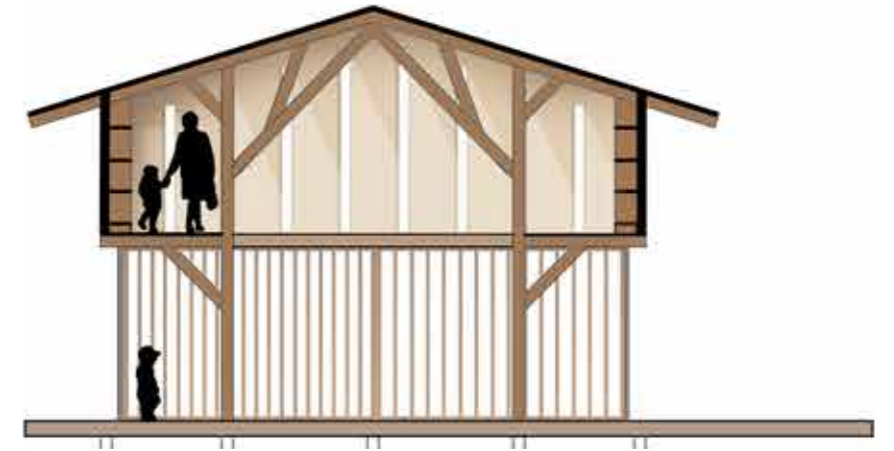




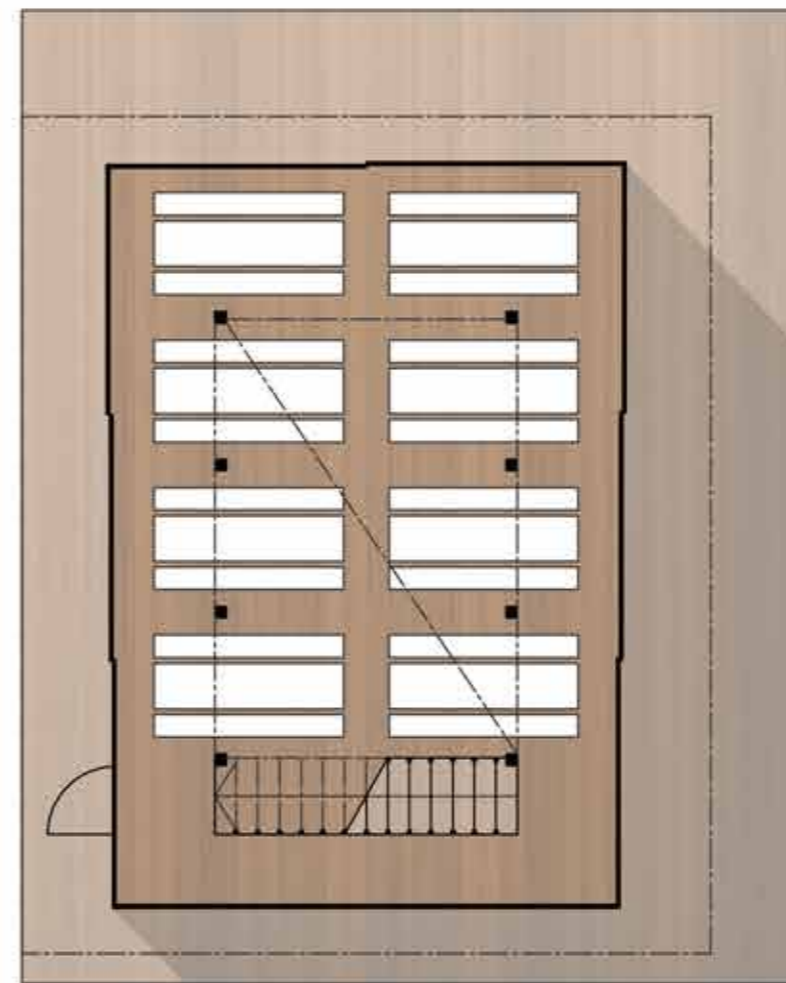
Elevation 1:100



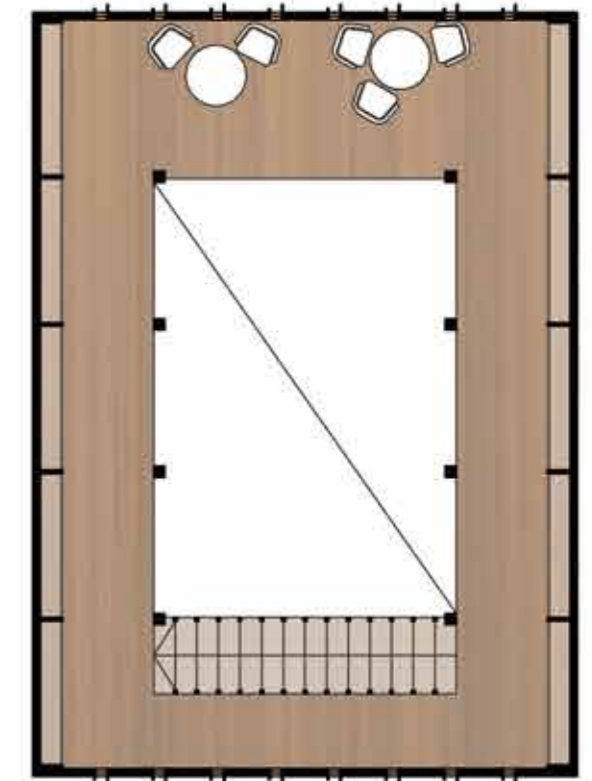
Section BB 1:100



Section AA 1:100



Ground floor 1:100
65m²



Second floor 1:100
35m²