

BOOKS & BREWS

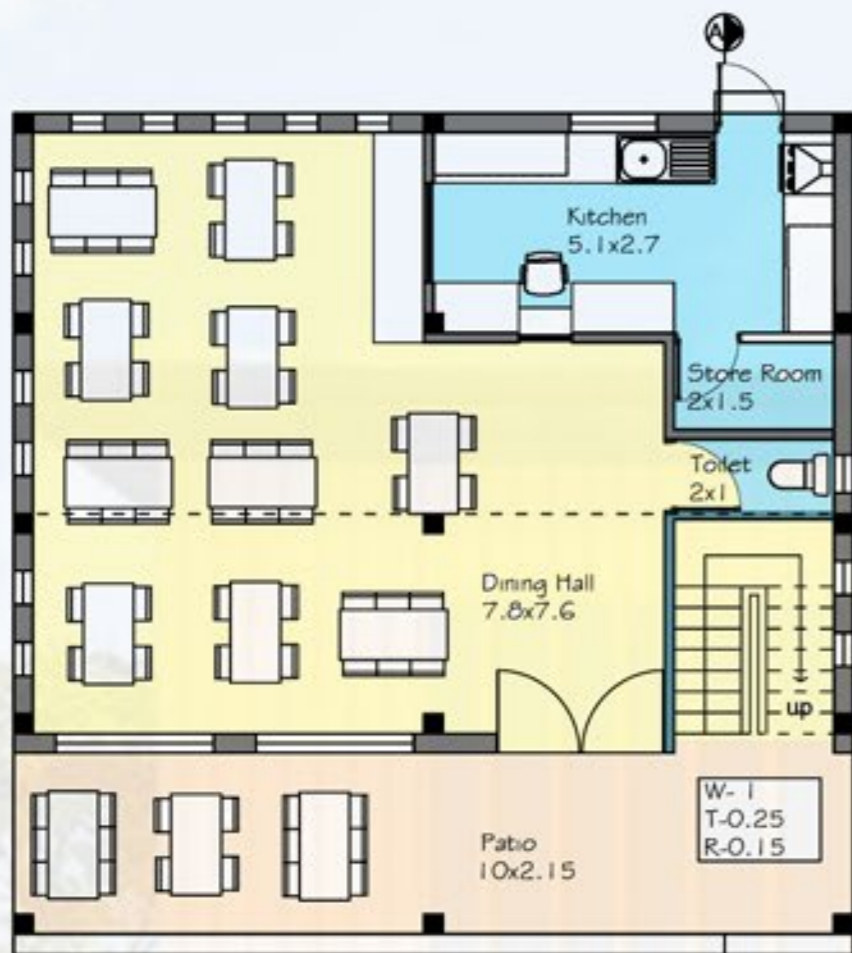
The project site, being situated in a region endowed with picturesque and verdant mountains, inspired the design to be dynamic and was influenced culturally by the structures in the valley.

The ground coverage being 100 m², the design was made keeping in mind the traditional architecture, materials and also the underdeveloped economic situation of the region and thereby, the cost restriction. The design also blends with the context of the site which are aesthetically simple and thus the key focus of the design is on the pragmatic techniques and materials as well as catering its prime function towards the students.

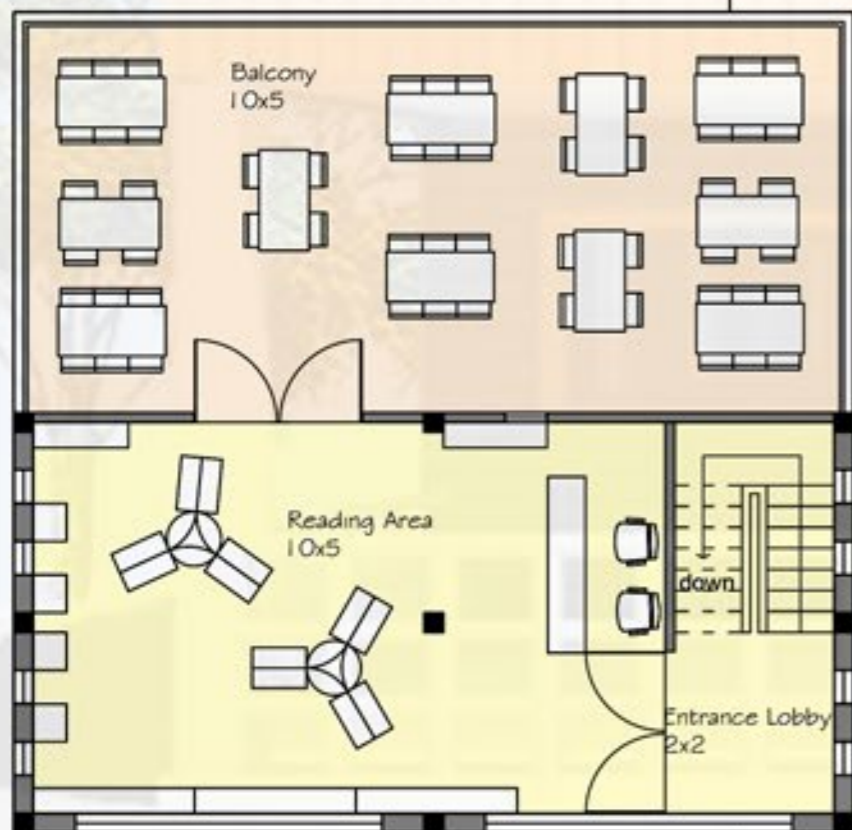
A 3D architectural rendering of a building. The top part shows a cutaway view of the upper floor, revealing a wooden structure with a central vertical post and a staircase. The bottom part shows a cutaway view of the ground floor, showing a similar wooden structure with a central vertical post and a staircase. In the bottom left corner, there is a set of specially designed furniture, including a wooden cabinet, a yellow chair, and a wooden table.

Specially Designed Furniture

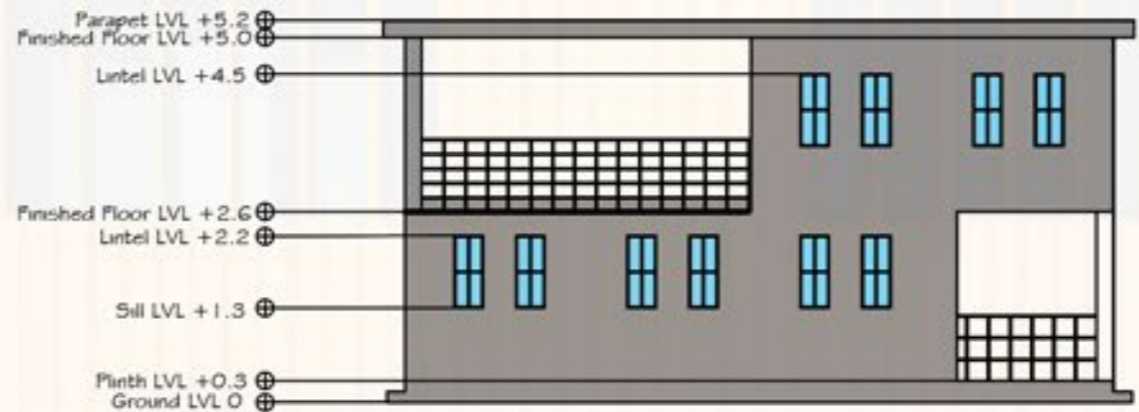
team5484



Ground Floor Plan



First Floor Plan



Section AA'



Site Plan