

BEYOND CONTEXT
 THE RURAL PIECE [MODULAR]
 TRAVELS AND INTEGRATES
 INTO THE LARGER SPACE
 SYMBOLIZING A
 LOCAL & GLOBAL
 CONNECTION



NA SITE PLAN
 1:80
 LOCATION: PUAN CITY CHINA



BUYI 布依族
 THE COLOR OF RURAL

BUSINESS MODEL
 TEACHING KIDS THE VALUE
 IN THE GOODS THEY CREATE

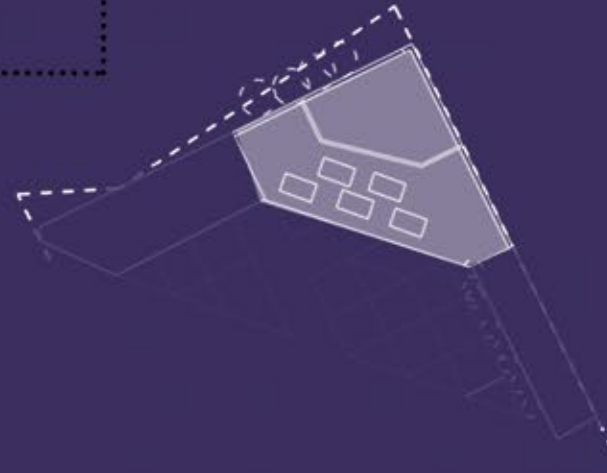


STEWARDSHIP
 BUYI ART OF
 CULTIVATION. KIDS
 PASS ON TRADITION



CREATIVE SPACE
 ACTIVATING RURAL
 BUYI KNOWLEDGE
 IN IMAGINATIVE
 WAYS

FLOOR PLAN LVL 1
 LIBRARY
 CONNECTING MODULAR
 PIECES OF NATURE



FLOOR PLAN LVL 2
 BLENDING LANDSCAPE BAMBOO FACADE
 OPEN BREEZE CANTEEN



CULTURAL HISTORY, A DIVERSE IDENTITY
 LIKE MOSET RURAL NEIGHBORHOODS IN CHINA, THE ETHNIC RESIDENCE
 ARE RICH AND DIVERSE IN CULTURE HAVING MANY TRADITIONS FROM
 ART AND MUSIC TO FASHION AND CULTIVATION. BUT THE BUYI PEOPLE
 IN THE LOCATION OF PUAN CITY ALSO SUFFER FROM ECONOMIC GROWTH
 DUE TO LACK OF LOCAL INFRASTRUCTURE. A **CONNECTION**
 BETWEEN THE LOCAL SECTOR AND GLOBAL SECTOR IS THE IDEAL GOAL OR
TRIFECTA FOR A THE STABILIZATION OF RURAL COMMUNITIES. MOST
 AREAS IN CHINA HAVE A LACK OF STANDARDS IN EDUCATION THAT SHY
 AWAY FROM **SELF-EMPOWERMENT** FORCING YOUNGER RURAL
 TEENAGERS TO MIGRATE TO URBAN CITIES FOR BETTER JOB OPPORTUNITIES.

OPERA, A TELLING OF A STORY
 THE PRESRVATION OF RURAL IDENTITY AND STEWARDSHIP
 IS EXPRESS THROUGH SONG AND DANCE BY THE BUYI PEOPLE

KIDNEY SPLINE LUNGS HEART STOMACH
FIVE RICE DISH



IN BUYI CULTURE FOOD IS OFFERED TO THEIR
 ANCESTORS. OFTEN NICKNAMED "RICE PEOPLE"
 THE FIVE RICE DISH IS A FESTIVE DISH COOKED
 AND PREPARED FOR CELEBRATION. THE BUYI
 USE NATURAL COLOR FROM VEGETABLES GROWN IN THEIR FARMS, THE
 COLOR BLACK, RED, PURPLE, YELLOW AND WHITE ALL HAVE MULTIPLE
 SIGNIFICANT MEANINGS. A SYMBOL OF NATURE, THE MOUNTAINS, WIND
 SKY, EARTH AND ANCESTORS EVOKE THEIR ESSENCE OF FENG SHUI. THE
 NATURE ATMOSPHERE OF FENG SHUI ALSO TRANSLATES INTO THE QI OR
 ENERGY OF YOUR BODY. THE HEART, LUNGS, KIDNEY
 STOMACH AND SPLINE ARE REPRESENTED IN THE
 FIVE RICE DISH TO EXPRESS HARMONY IN YOUR
 BODY AS A SIGN OF GOOD HEALTH.



TEAM 5409

LIBRARY AND CANTEEN AREA

THE LIBRARY FACILITATES BOTH INDOOR AND OUTDOOR LEARNING AS THE ENTRANCE WAY IS A SOFT THRESHOLD BETWEEN INTERIOR AND EXTERIOR. ALLOWING STUDENTS TO STUDY IN NUMEROUS THINKING ENVIRONMENTS AS THEY PLEASE. AS WELL AS THE CANTEEN PROVIDED WITH VIEWS OF THE LARGER COURTYARD AREA.



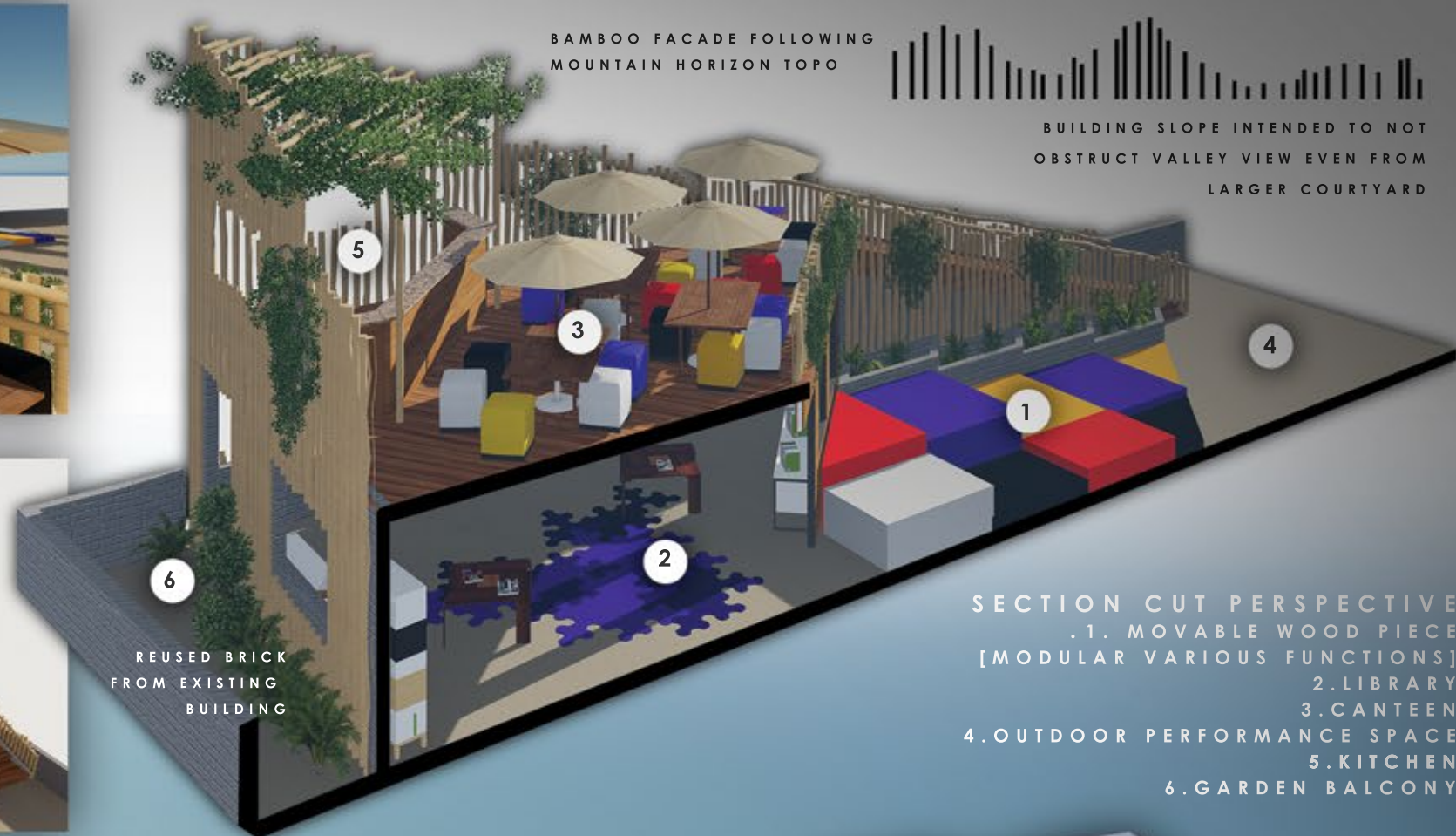
PIECES OF BUYI GRASS ROOTS

THE MODULAR PIECES THAT ARE COLOR CODED TO REPRESENT THE FIVE COLORS OF BUYI RICE DISH IS A SYMBOL OF THE COMMUNITY GATHERING TOGETHER TO CREATE A SINGLE STRONG BUYI COMMUNITY. ALTHOUGH EACH PIECE MAY VENTURE FAR FROM BUYI ROOTS OF THE SITE, THE PIECES SHARE BUYI CULTURE TO ESTABLISH A GLOBAL CONNECTION AND WILL ALWAYS COME BACK TO BUYI ROOTS.

BAMBOO FACADE FOLLOWING MOUNTAIN HORIZON TOPO

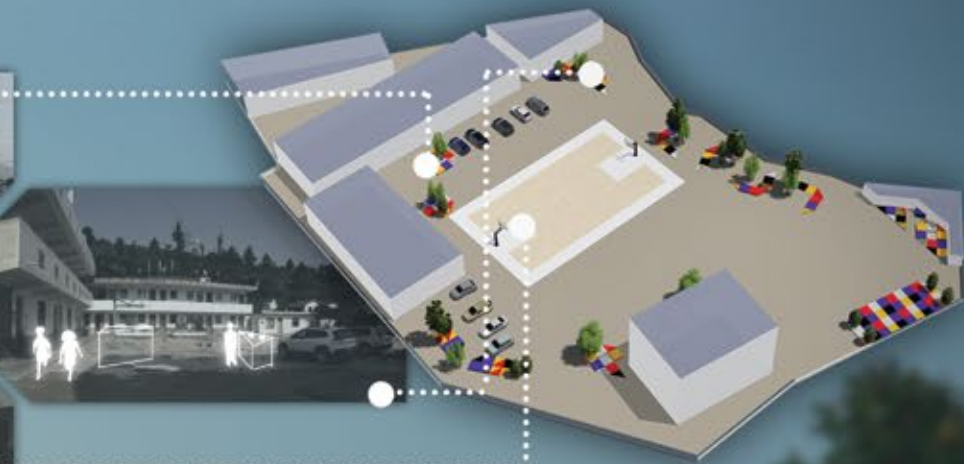


BUILDING SLOPE INTENDED TO NOT OBSTRUCT VALLEY VIEW EVEN FROM LARGER COURTYARD



SECTION CUT PERSPECTIVE
 . 1. MOVABLE WOOD PIECE [MODULAR VARIOUS FUNCTIONS]
 2. LIBRARY
 3. CANTEEN
 4. OUTDOOR PERFORMANCE SPACE
 5. KITCHEN
 6. GARDEN BALCONY

REUSED BRICK FROM EXISTING BUILDING



ONE BUYI OPERA TELLS THE TALE OF A CHINESE BUYI SOLDIER WHO GOES OFF TO WAR LEAVING HIS WIFE BEHIND. HIS WIFE PREPARES HIM THE BUYI FIVE RICE DISH SO THAT HE DOES NOT FORGET HIS BUYI ROOTS,

TEAM 5409