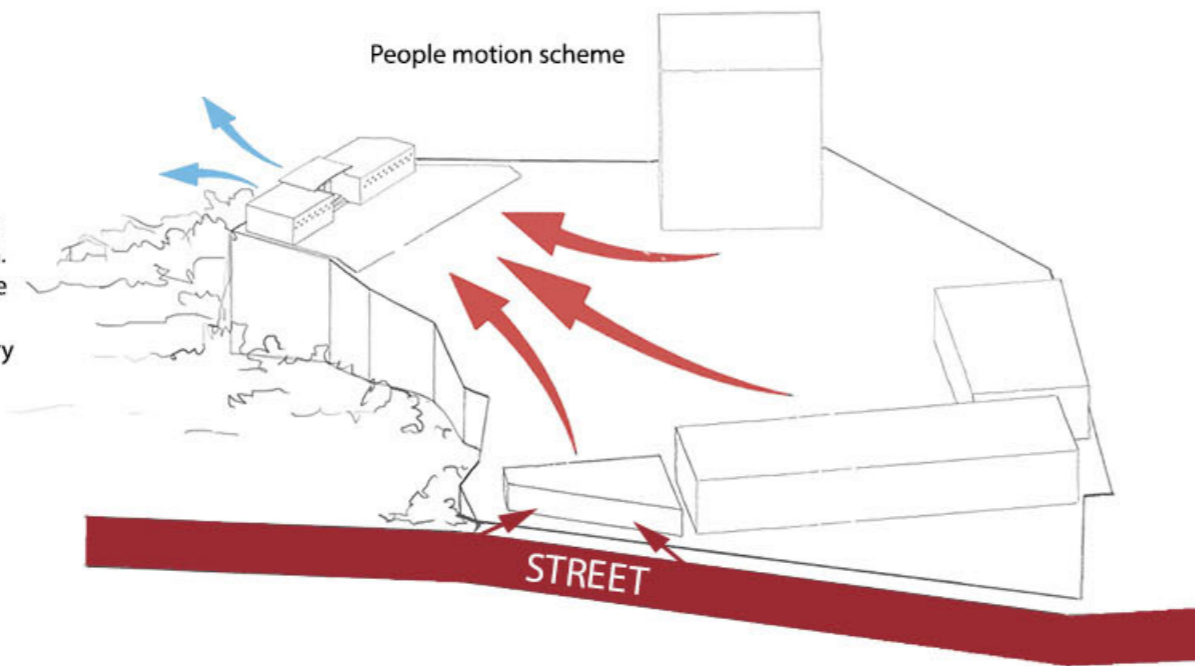
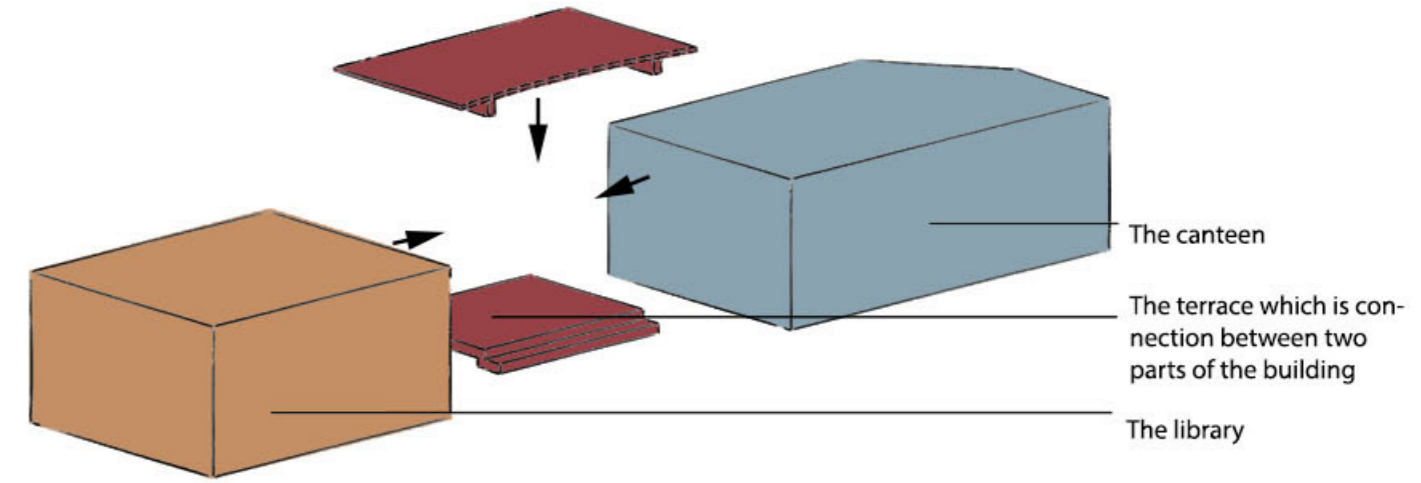


The scheme is showing us the direction of people motion. Our building invite them by the view to come on the terrace, where are the entrance to library and canteen.



Functional separation scheme



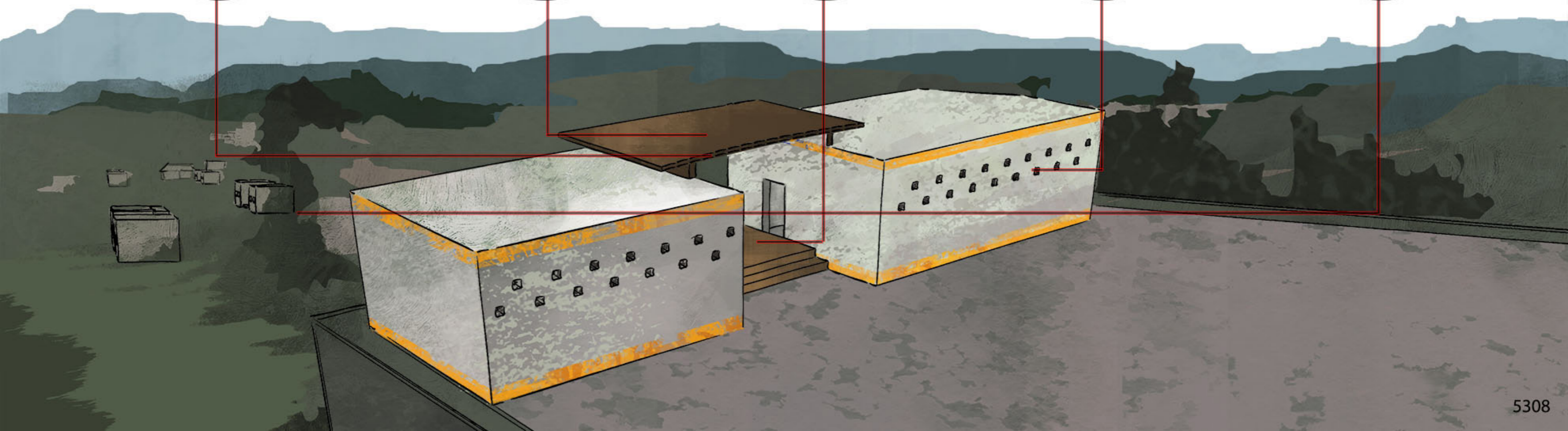
The curve line that we used is based on wavy lines which are showing up in architecture, costume design and in Buyis' life

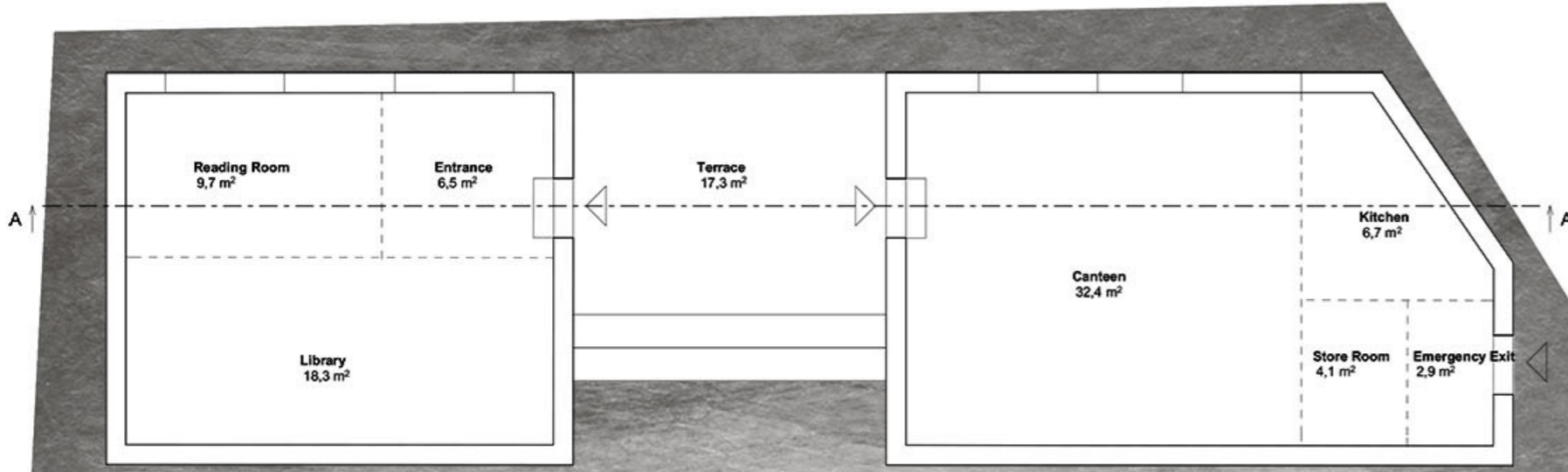
Form of the roof above terrace is based on traditional Chinese roof. We used this inspiration to create our own version, which will be more simple.

The entrance terrace is above ground level. This decision results from Chinese tradition and construction of the building.

The small spots in the wall which are on the structure on our project site was inspiration to use it at our project. In the simple way we can achieve the interesting form of elevation

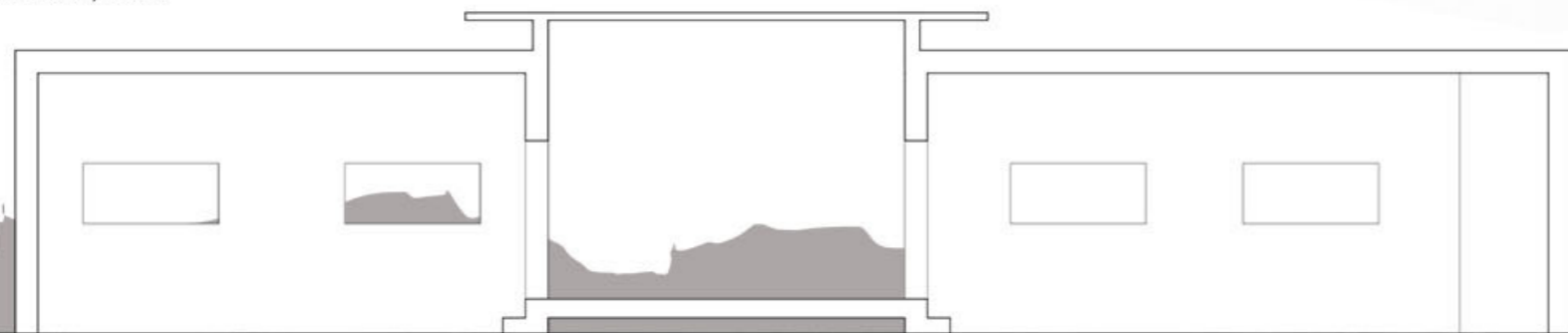
The breathtaking view from the edge of courtyard is one of the strongest advantages of location. Our building doesn't cover it. We can admire it from the terrace or from the big horizontal windows inside.



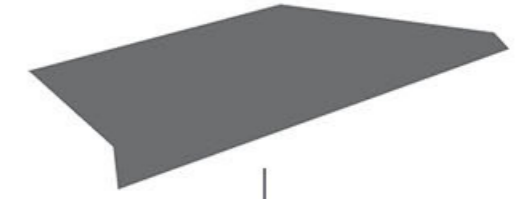


Our task was creating a design of canteen and library building. In case of differences of this functions, we decided to separate them in two volumes connected by roofed entrance terrace. This solution contains references to traditional chinese architecture and retains form harmonizing with group of school buildings. Horizontal arrangement of this buildings caused decision about longitudinal structure. Moreover our design fits in valley landscape, considering local tradition of architecture and cultural diversity. Simple solid enables economical and solid construction solution. Entrances to building are located on roofed terrace which crop view on the valley. Interior daily lighting is ensured by horizontal windows located on east walls. This solution allows opening the interior on the local landscape. West elevation has unique character thanks to rhythm of little holes, which are responsible for suitable air circulation. They are also reference to present buildings in school complex. Increased level of terrace is result of construction and chinese architecture tradition. Roof above terrace is reference to characteristic traditional chinese roofs, but shown in a new, simple way. The crude character of design was adapted to kids reception by orange strips on the bottom and top of the building. Strong and expressive color attract attention and invite to admire the view from entrance terrace.

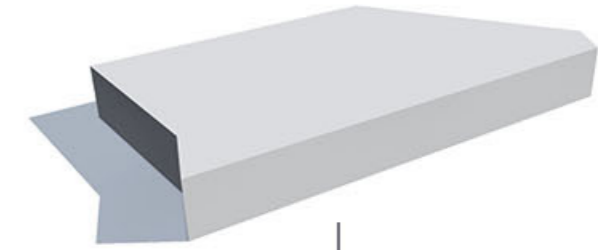
A-A Section, 1:100



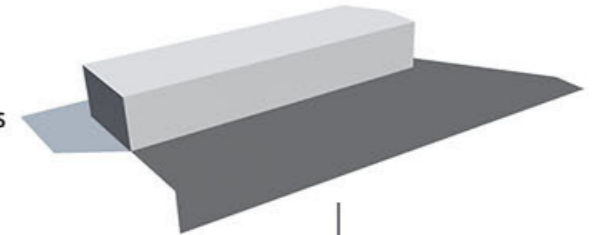
The surface inscribed in location



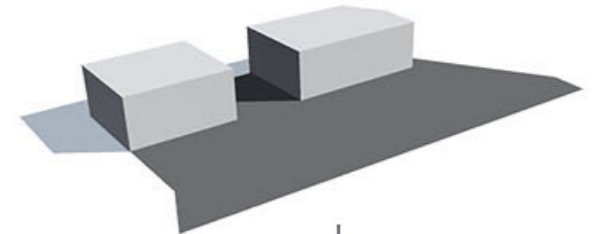
The volume inscribed in location



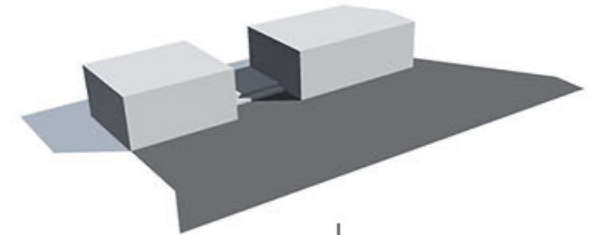
Adjustment of volume dimensions for the requests



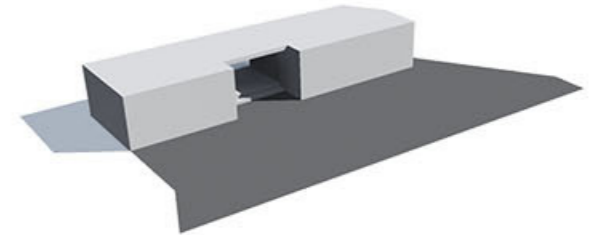
Volume separation for the different function



Creating entrance terrace which is chinese tradition



Roofing the entrance surface



Creating the interesting form of the roof

