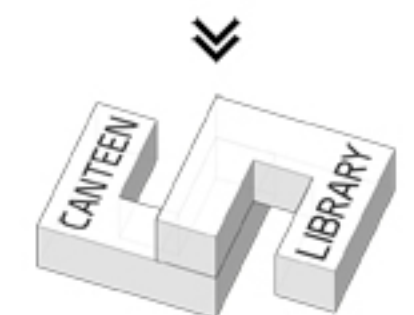
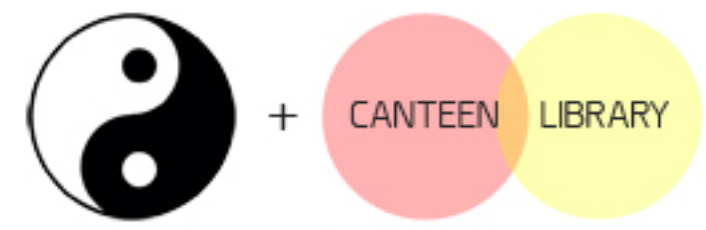
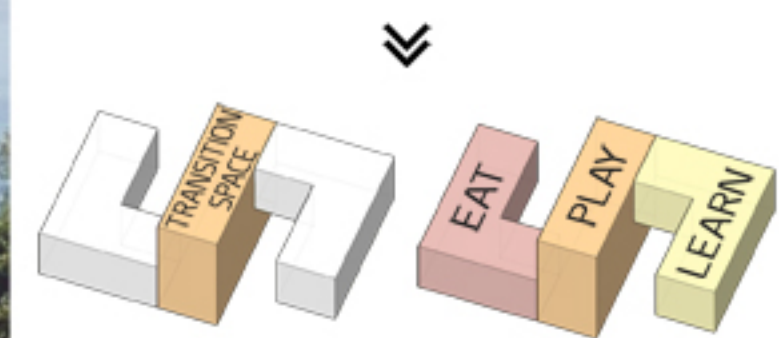


EAT . PLAY . LEARN

SCHOOL'S CANTEEN & LIBRARY OF BUYI COMMUNITY

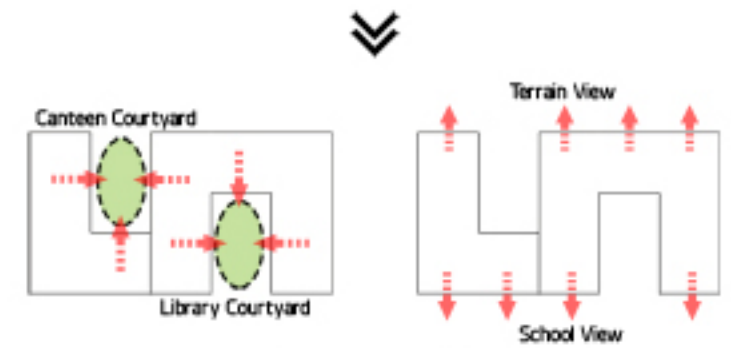


Interlock 2 blocks of different programs to create connectivity.



Create transition space between canteen and library as buffer zone of quiet and noisy space

Transition space as recreational area to create hierarchy of activities which are eat, play and learn.



Visual Richness - Multiple View

Yin and Yang concept is introduced in the proposed building design to create symbiosis between 2 building programs, canteen and library. A play area is introduced as a strategic transition place to enhance the space quality. The place that reflects primary student's needs where they can enjoy their food, have fun and learn knowledge.

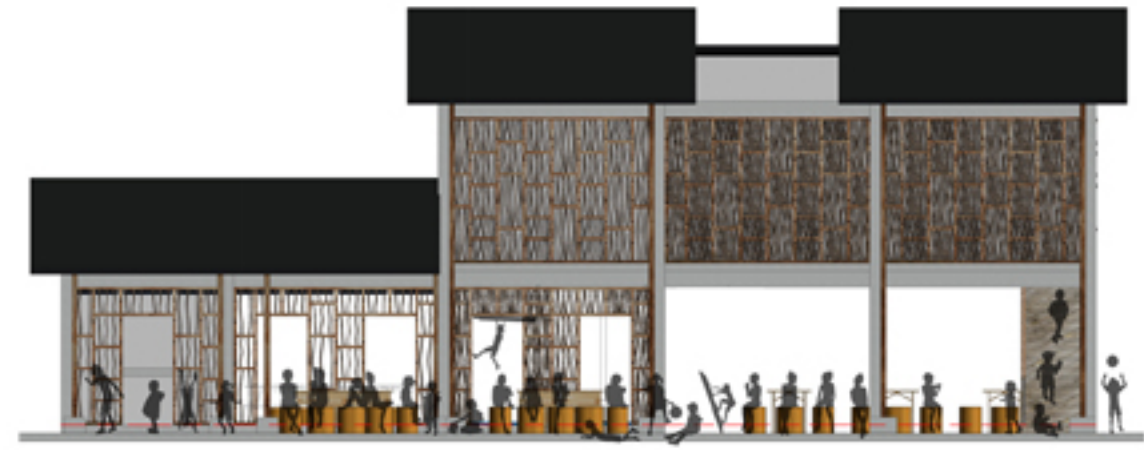
View towards beautiful surrounding landscape and courtyard is emphasized in building design to enhance visual connectivity between human-human and human-nature. The overall building also emphasizes climatic responsive design which utilizes natural daylighting yet is able to reduce solar heat gain. Several local identity elements are injected into building design to enhance the sense of place.



Ground Floor Plan
Scale: N.T.S.



First Floor Plan
Scale: N.T.S.



Front Elevation
Scale: N.T.S.



The Traditional Buyi costumes are predominantly blue and black with minimal and elegant designs



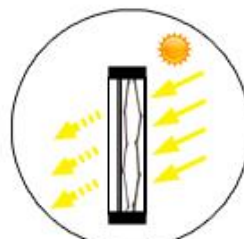
Recycled blue and black costume's fabric as ceiling material to create sense of belonging



Twigs from site surrounding



Twigs as facade's material to blend with surrounding context and characteristics



Facade design which is glazed with twigs able to frame views of surrounding landscape and allow daylight penetration to provide comfortable indoor ambience



Number of twigs at facade increases from canteen to library (lower floor to upper floor) to create space hierarchy

EAT . PLAY . LEARN SCHOOL'S CANTEN & LIBRARY OF BUYI COMMUNITY

EAT AREA - CANTEN



PLAY AREA - MINI PLAYGROUND



LEARN AREA - LIBRARY

