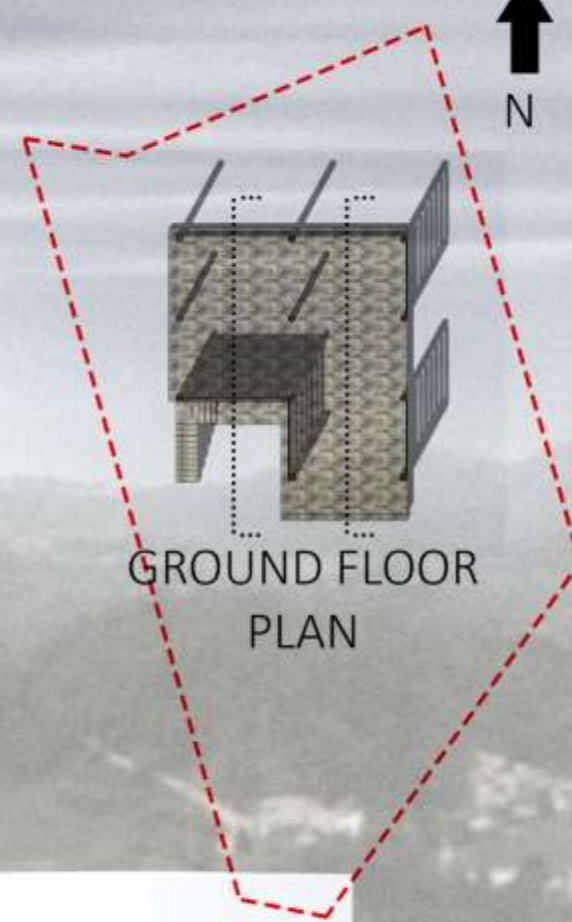
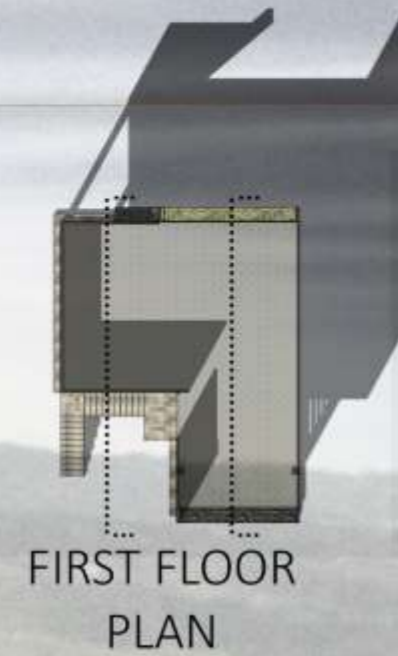
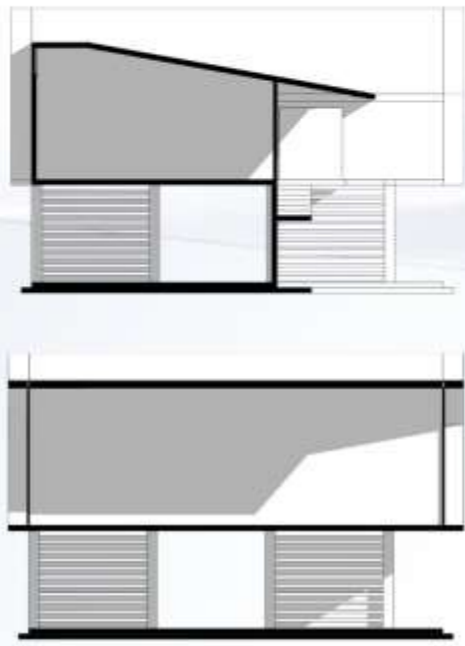


# SIMPLICITY REDEFINED



team 5163



## SIMPLICITY REDEFINED

The inspiration comes from the rich and traditional culture of Buyi village, the architectural style and sensibility of the area to preserve its art and style and form. The ground floor incorporates the canteen, while the top floor will cater to the requirements of a library. Temporary Wooden Batten partition used to create modifiable space, as per the different functional requirement. in the canteen area