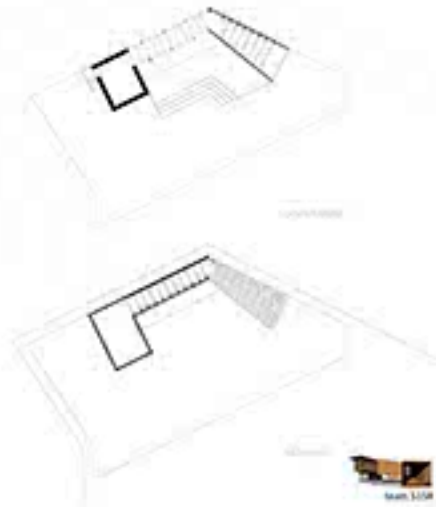


stair-CASE

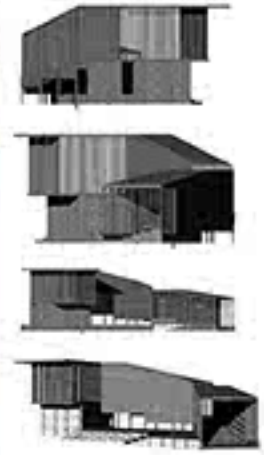


The site in Phu Tai features unique architecture to assist nature within itself, in its own physical essence. The cultivated valley, swept clean of trees and replaced with a carpet of vegetation, inspires one to enjoy the serenity of this verdant expanse by stepping along the three walls edging the valley.

The program calls for elevated seating to the valley of green. The library is a dynamic experience of stepping up to the reading room that wraps all around the northern end, with books on one side and the valley on the other. The staircase platform is enveloped by timber walls that let in diffused light, ventilation and interrupted view of the landscape. The view here becomes the lightly bounded space in the middle, led by the adjoining primary accommodation facing the reading room. The extended steel roof shades the food counter, while the school table spread on the mezzanine, all built upon a platform just by a couple of steps and landscape merging with the rice fields beyond. The intervention strives to have minimum ground footprint and maximum engagement with the surroundings.



stair-CASE



gh.jpg

s.jpg