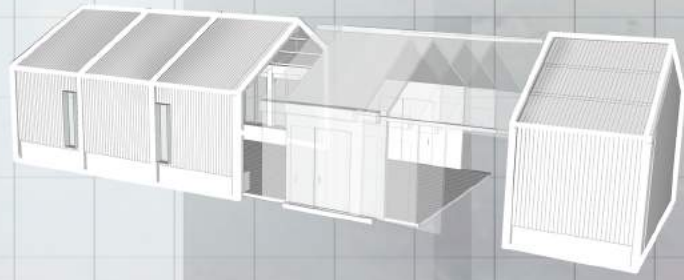
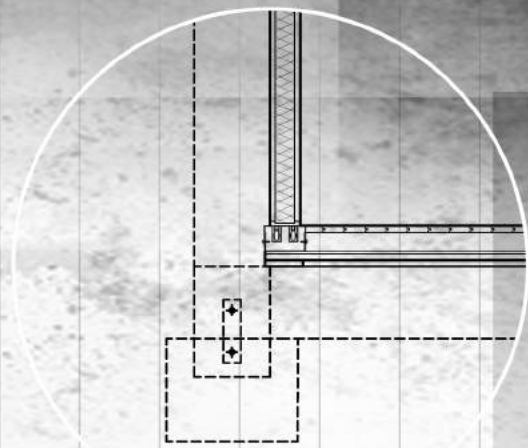
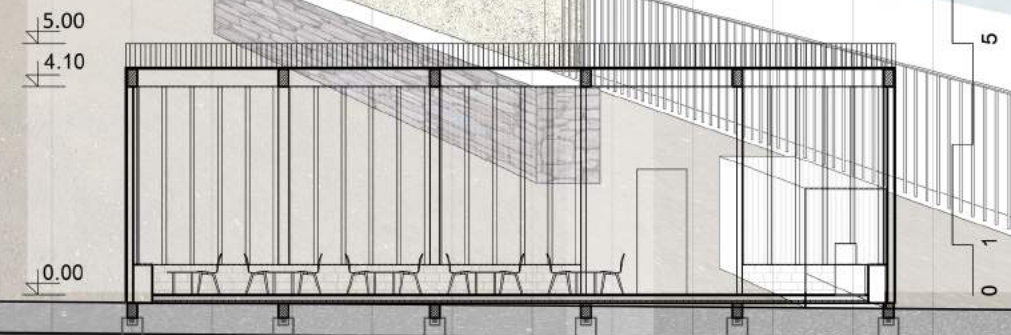
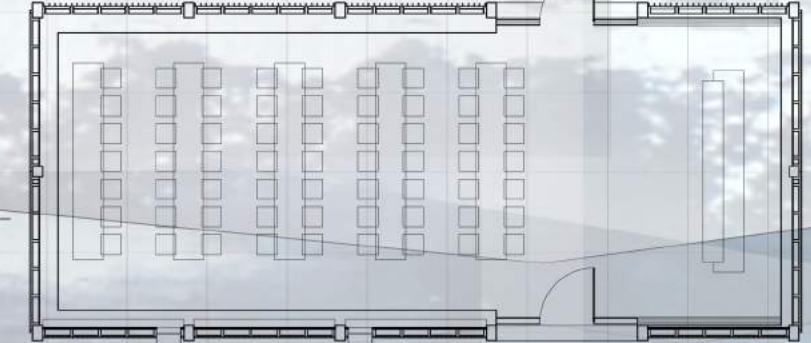




The specific location abounds with special natural beauty which acts in it and unavoidably creates forces in space. The concept of this building tends to find a way in which these forces will be respected and lead towards a solution which creates a bound between nature, tradition and architecture. The use of materials such as wood and stone tries to answer the contemporary needs while respecting the local building culture. Stone is used to fortify the wooden construction and simultaneously create a sitting area in the inside; in this way it represents a multifunctional architectural element. Even though it represents a single space area, this concept tends to create conditions where the outside and the inside get linked.



The building is divided into five modules one of which is dynamic; it represents a frame that slides on thin rails. The idea is to create a passage, a social node connecting the main school yard with a smaller one that overlooks the beautiful hills. When the conditions are not adequate for this module to remain open, it closes and therefore follows and completes the modular sequence. The main structure of the building consists of timber columns which carry the weight of the trusses that represent a combination of wood and metal straps. The usage of these metal straps lowers the weight of the truss and the overall construction.



The portable module consists of four panels; two lateral ones and two of the roof construction. The sliding is made possible through thin rails which are situated in three parts of the building: the first one is placed on the floor, the second one is placed vertically on the lateral beam and the last one is placed on the ridge beam.

