

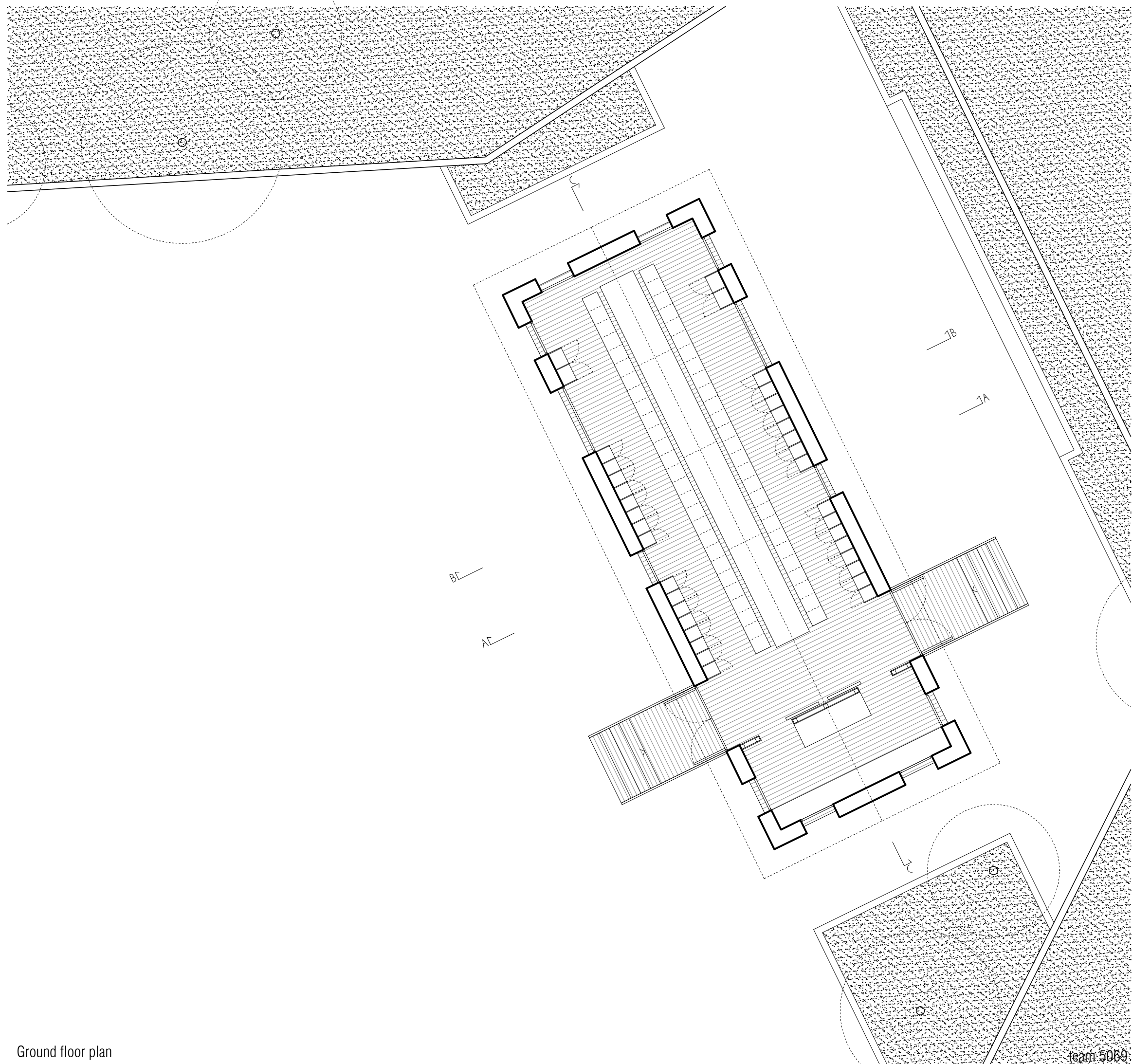
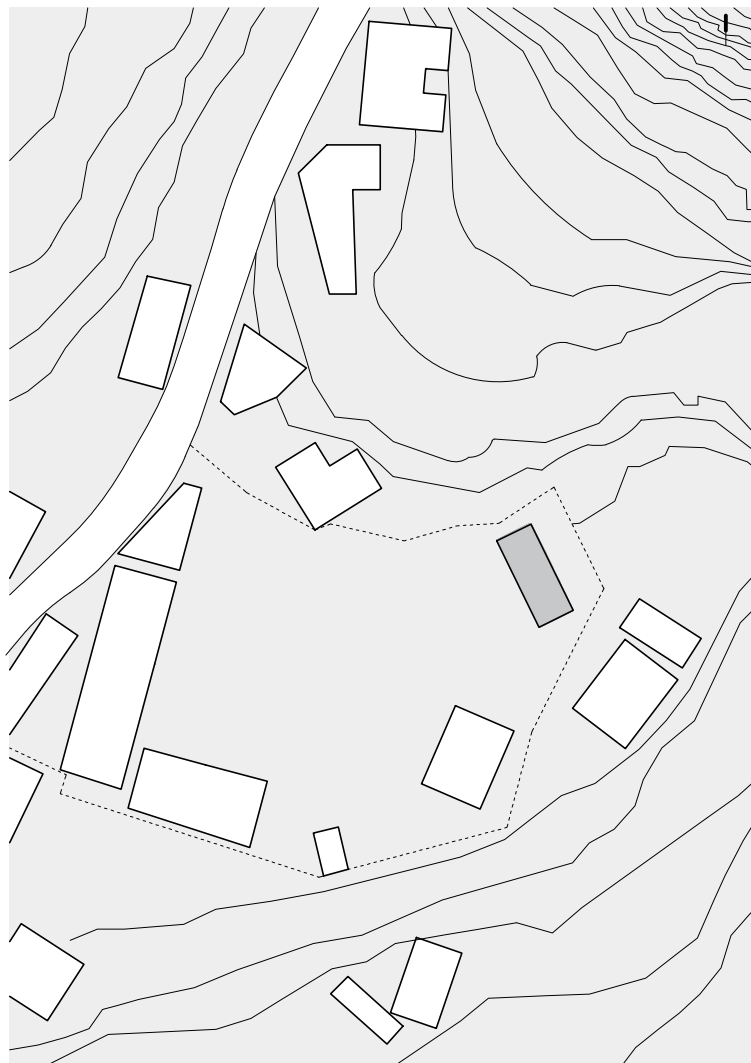
The following project tries to respond to that life specific to a certain place, to certain people.

Our main concern was to create something with local, accesible materials like stone, wood and tile, in a distinct aesthetic inspired by the vernacuar architecture.

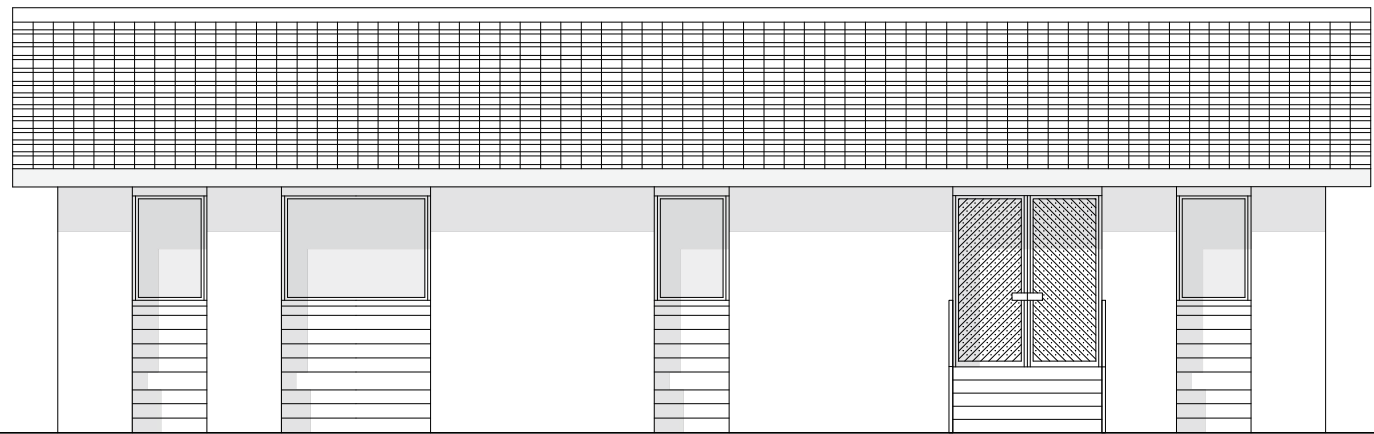
The building has a perimetral stone structure, the roof and floor being supported by wood elements. Oriented so that it has a view over the valley, it also defines a more private courtyard in the back.

The plan is divided between the kitchen and the main area wich serves as a library or canteen, one at a time. To serve both functions the room is furnished so it transforms according to the use. In the middle of the space a wide table suits both canteen and library, and is the main core where people gather to study or to eat.

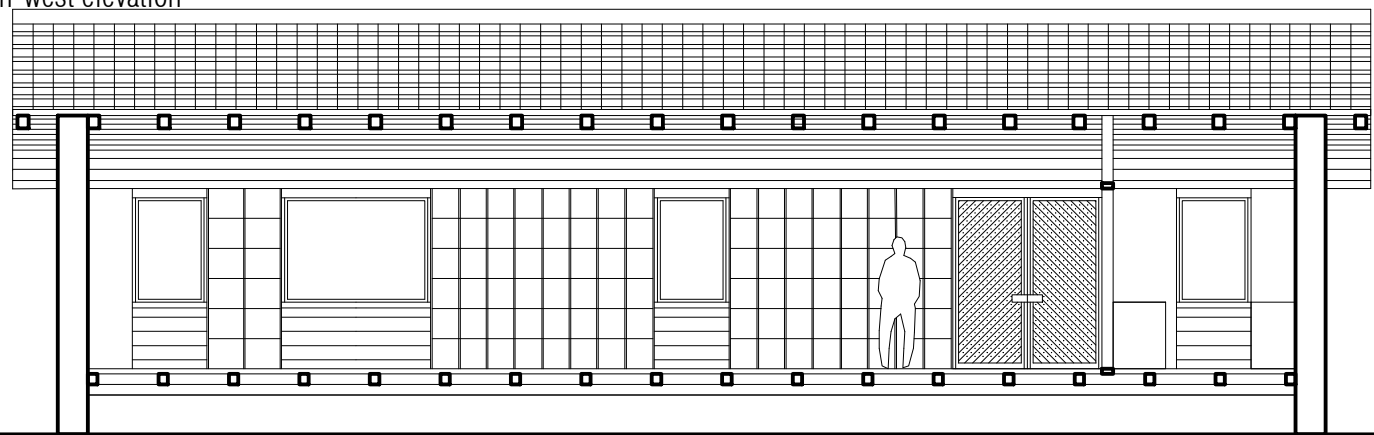
It is designed as a place that brings people together, under one roof, at the same table.



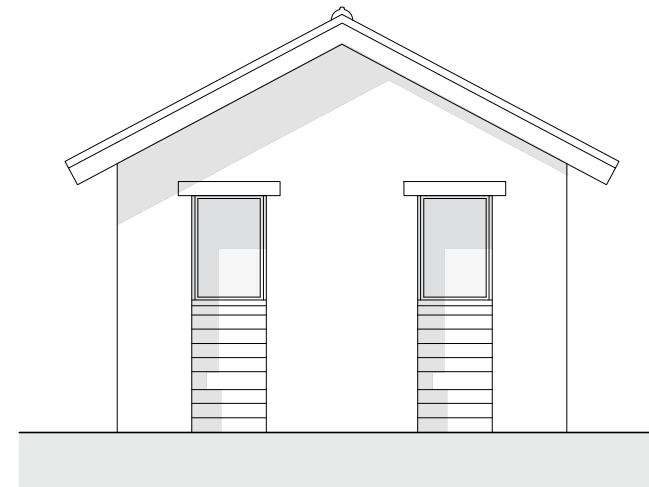
Ground floor plan



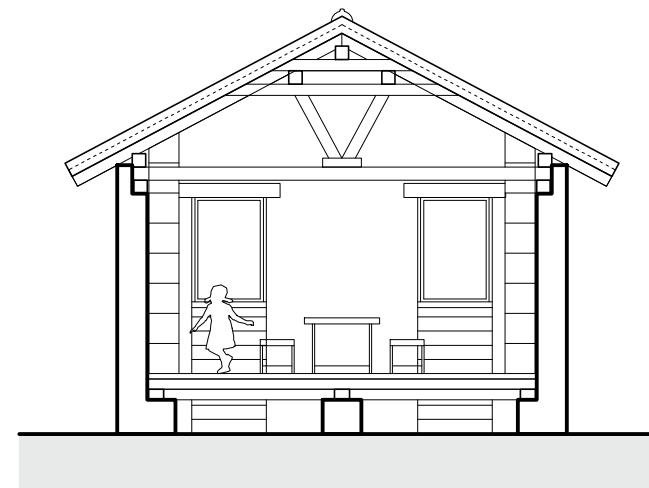
South-west elevation



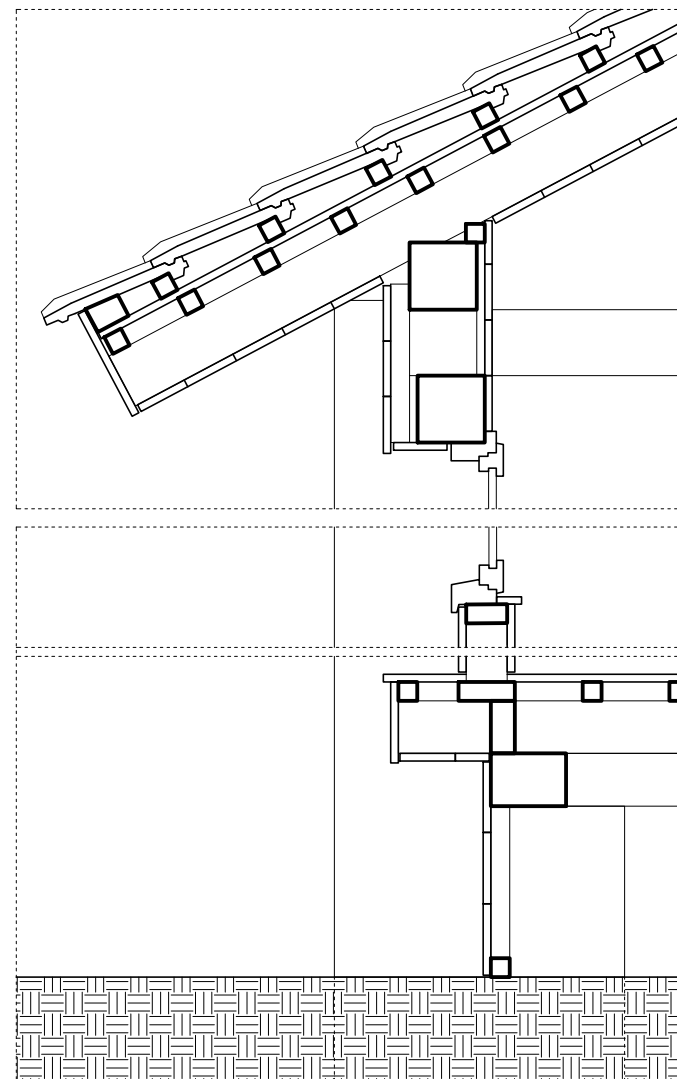
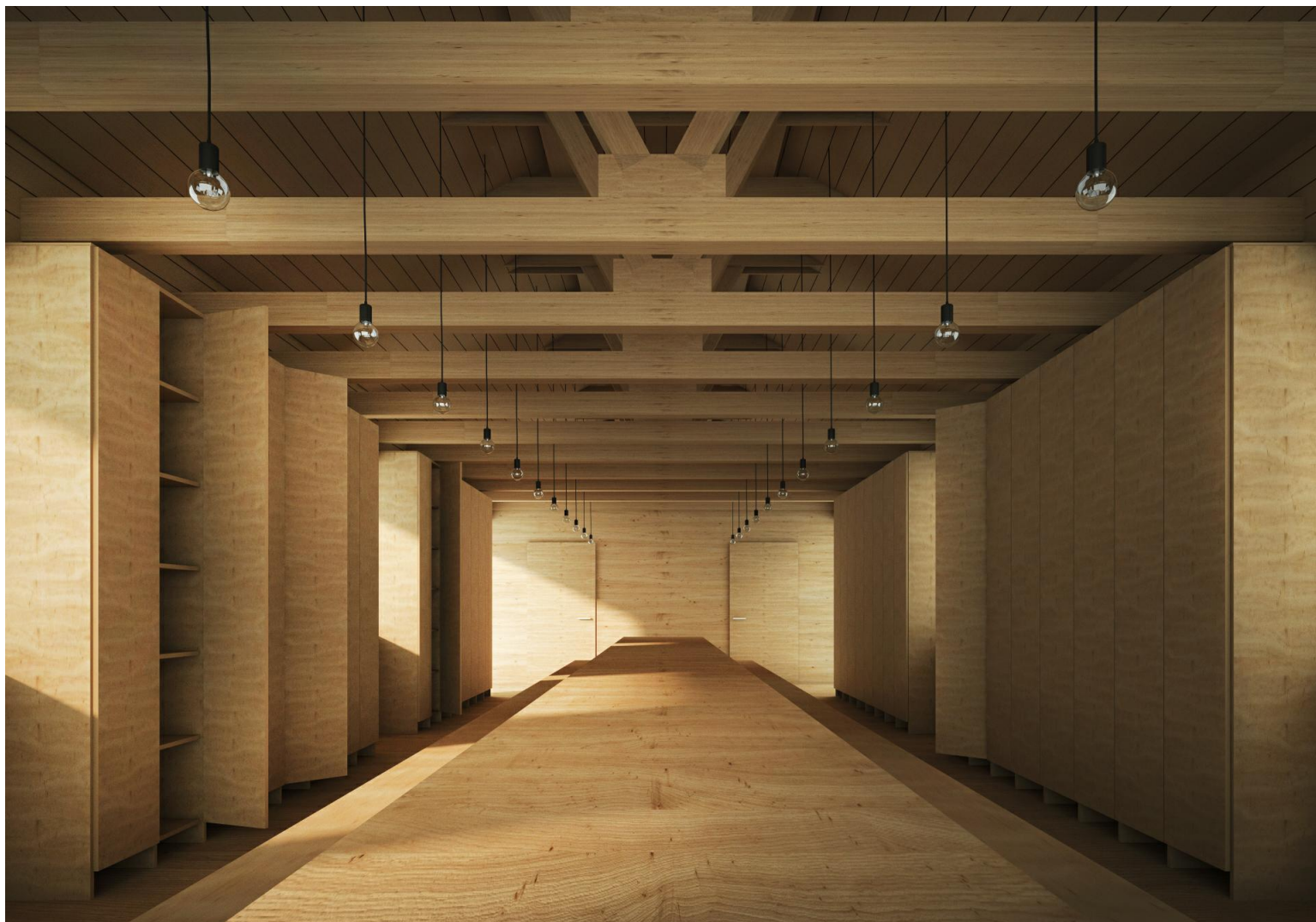
Longitudinal section C-C



South-east elevation



Cross section B-B



Cross section details A-A

