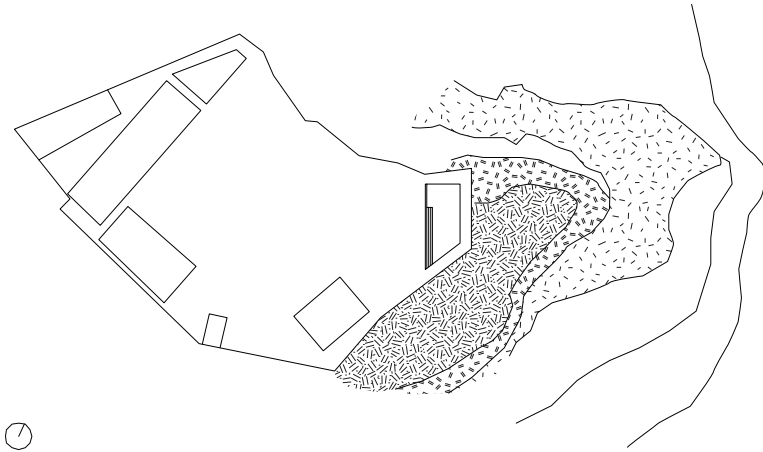


# THEATRE OF THE VALLEY

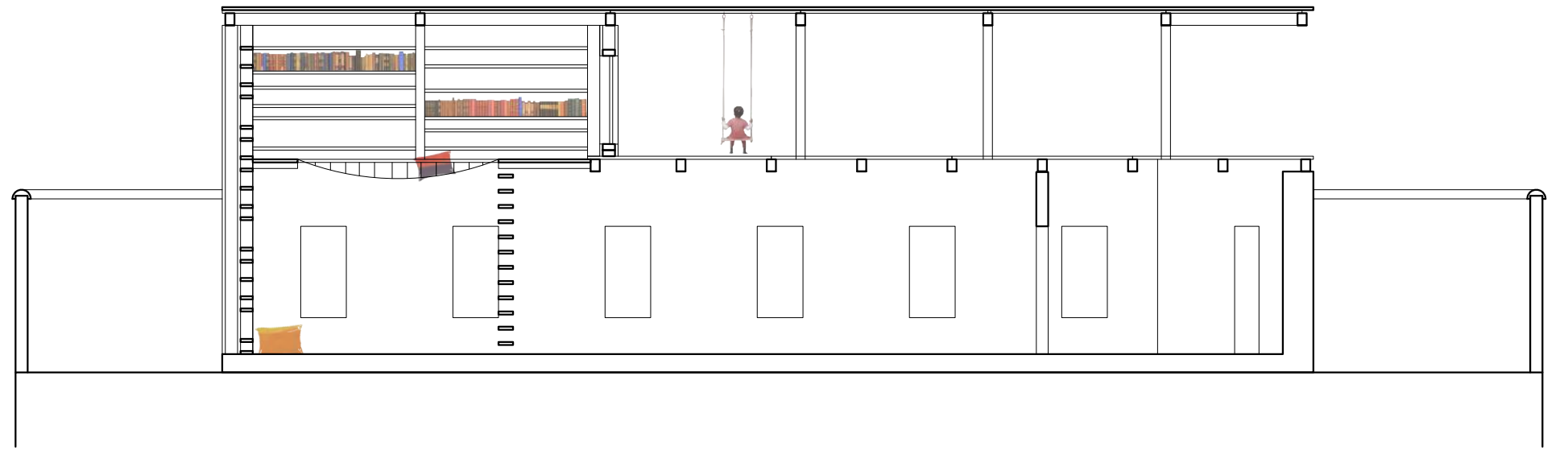


The project we conceived is based on two main ideas: emphasize the view of the valley which is an important asset of the plot and connect the yard by offering a spot for musical and theatral events, very common in the buyie culture.

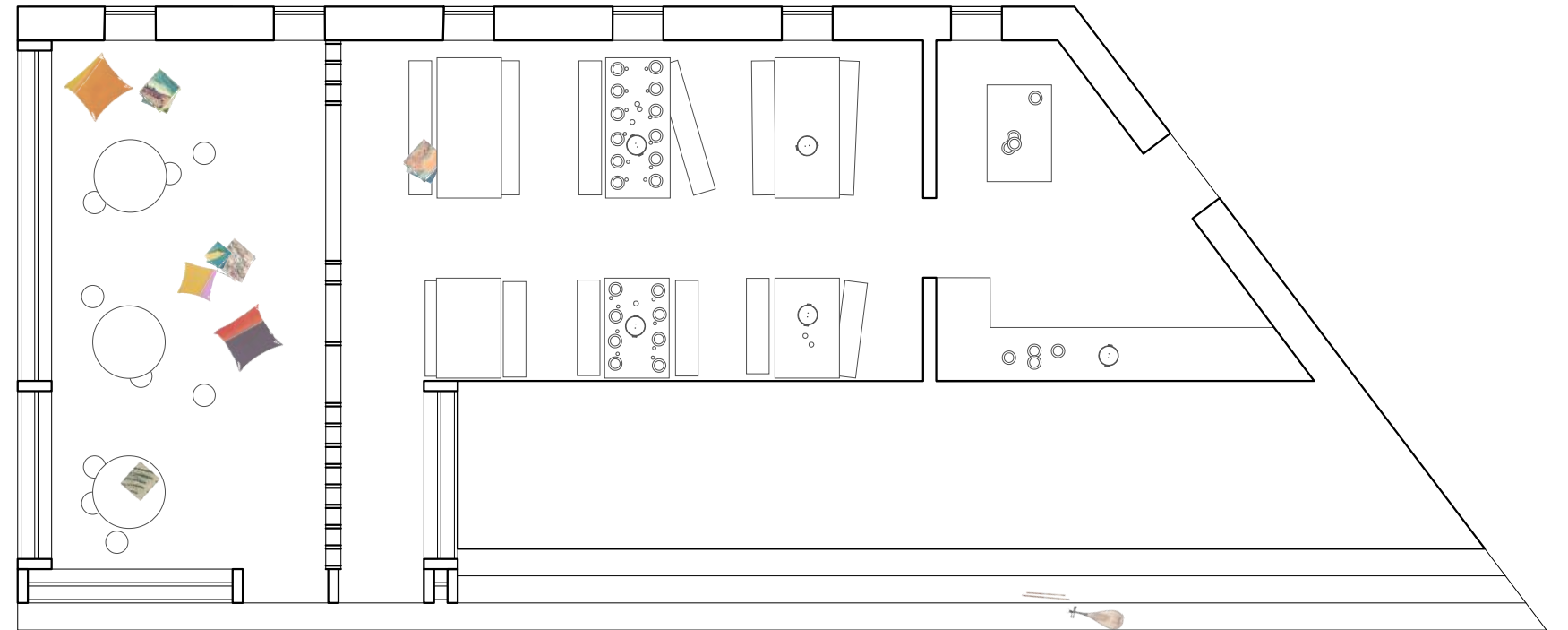
Therefore several steps allows to acced to a covered panoramic view terrace which is higher than the existing fence wall. The same steps are also used as rows of seats by the puppils during entertaining activities.

The interior space is composed by two parts. The kitchen and the canteen are located behind the steps and the library is located in a double high volume. These two parts are differenciaded by the use of two local materials. The stone for the socle which contain the kitchen and the canteen and a wood structure for the library, which will be also used to store the books.

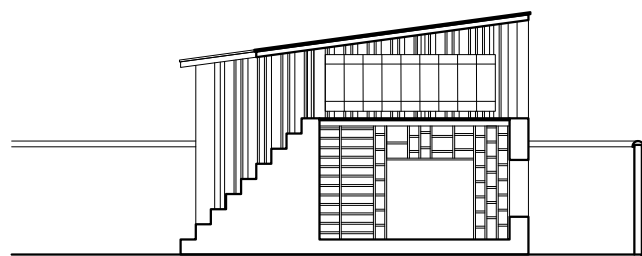
Given that the interior surface is only 100 sqm big for 200 children, the space of the library as been optimised by the arrangement of passeways and a net, creating a relaxing space for reading in the second floor, accessible thanks to a latter. The panoramic terrace and the rows of seats are protected by a roof allowing the puppils to eat while they are sheltered from the rain during the summer season.



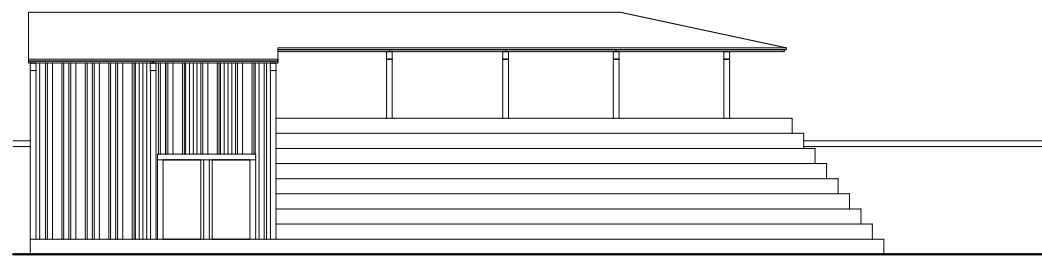
1:100 longitudinal section



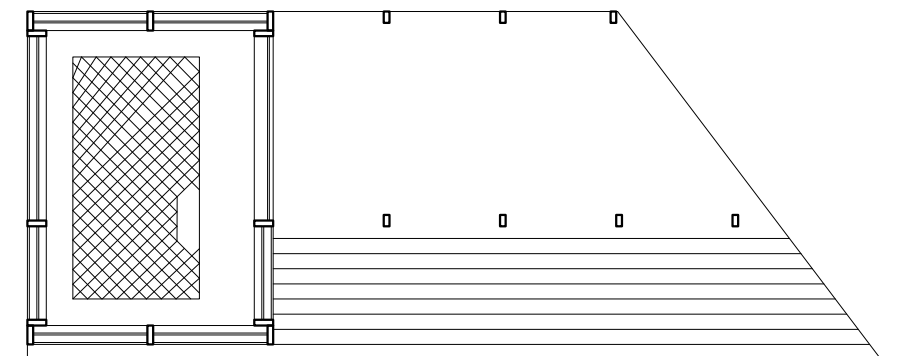
1:100 ground floor



1:200 transversal section



1:200 west facade



1:200 first floor

