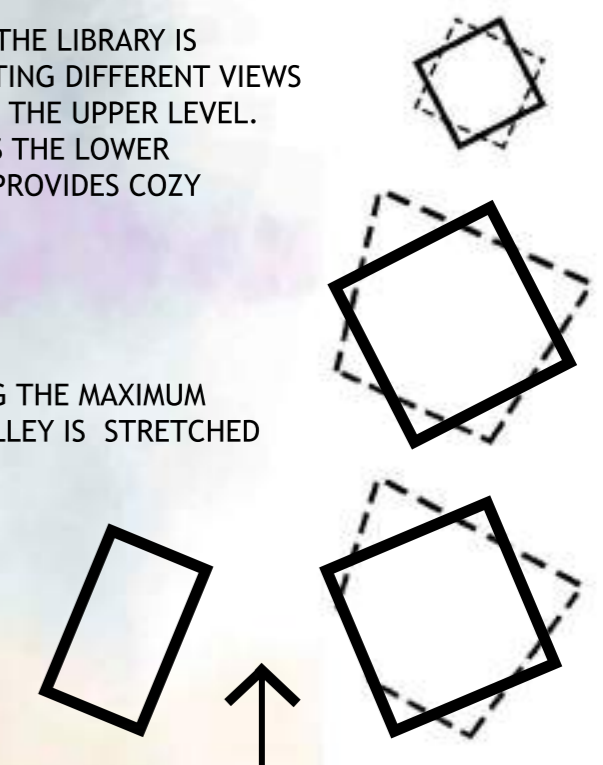
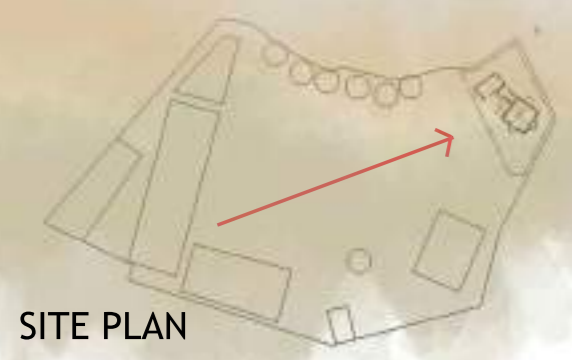
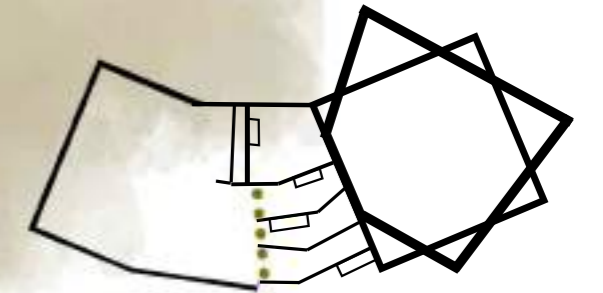


LEVEL 2 PLAN OF THE LIBRARY IS ROTATED, HARVESTING DIFFERENT VIEWS OF THE VALLEY ON THE UPPER LEVEL. THIS ALSO SHADES THE LOWER STRUCTURE. AND PROVIDES COZY CORNER SPACES.

ELEVATION FACING THE MAXIMUM VIEWS OF THE VALLEY IS STRETCHED

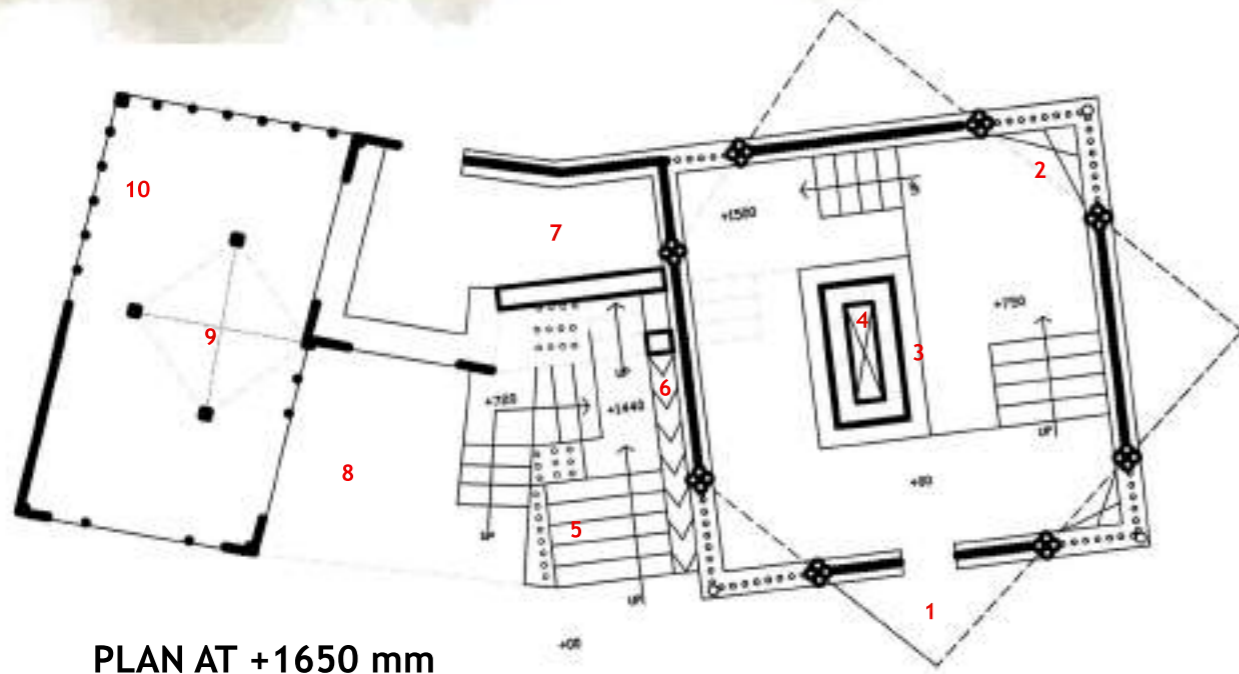


CANTEEN ORIENTED TO FORM AN INVITING SPACE FACING THE CLASSROOMS.

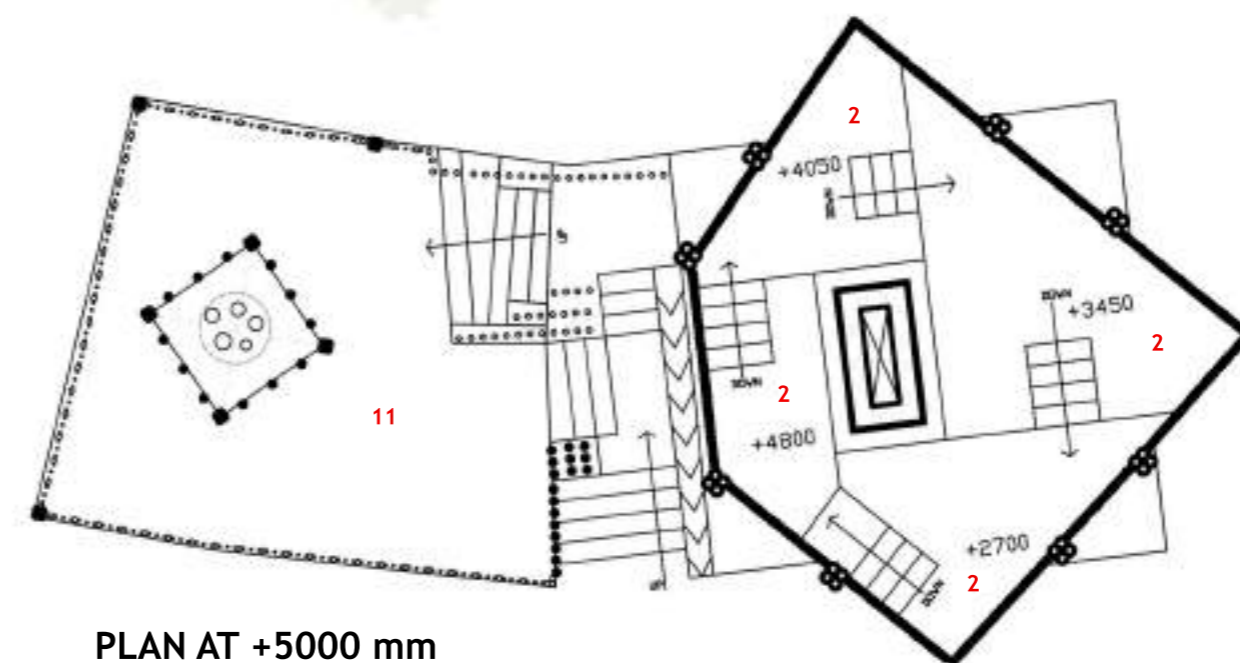


SITE PLAN

THIS CENTRAL AREA IS DIVIDED INTO SEMI-SHADES SPACES, FOOD COUNTER, INTERACTIVE MUSICAL ELEMENTS, AND STEPPED PLATFORMS.



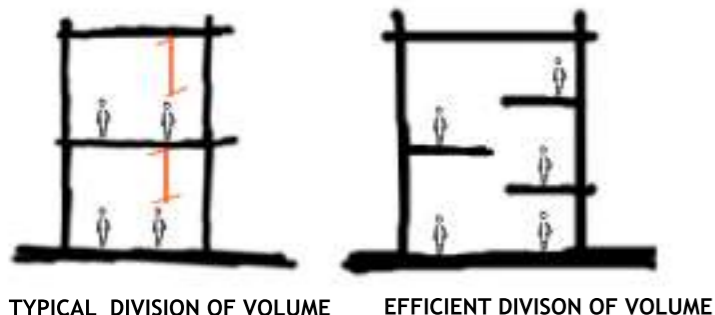
PLAN AT +1650 mm



PLAN AT +5000 mm

- 1. ENTRY TO LIBRARY
- 2. READING ROOM/ CORNERS
- 3. BOOK SHELF
- 4. SOLAR CHIMNEY
- 5. STEPPED PLATFORM AND PLAY AREA
- 6. SLIDE
- 7. KITCHEN
- 8. SEMI SHADED SPACE
- 9. DOUBLE HEIGHT CHIME SPACE
- 10. INDOOR CANTEEN SPACE
- 11. RAISED CANTEEN TERRACE

INTRODUCING LEVELS TO UTILIZE VOLUME



ELEMINATING THE INTERMEDIATE SLAB BETWEEN TWO STOREYS AND INTODUCING SPLIT LEVELS TO UTILIZE THE VOLUME EFFICIENTLY TO GET MAXIMUM USABLE AREA

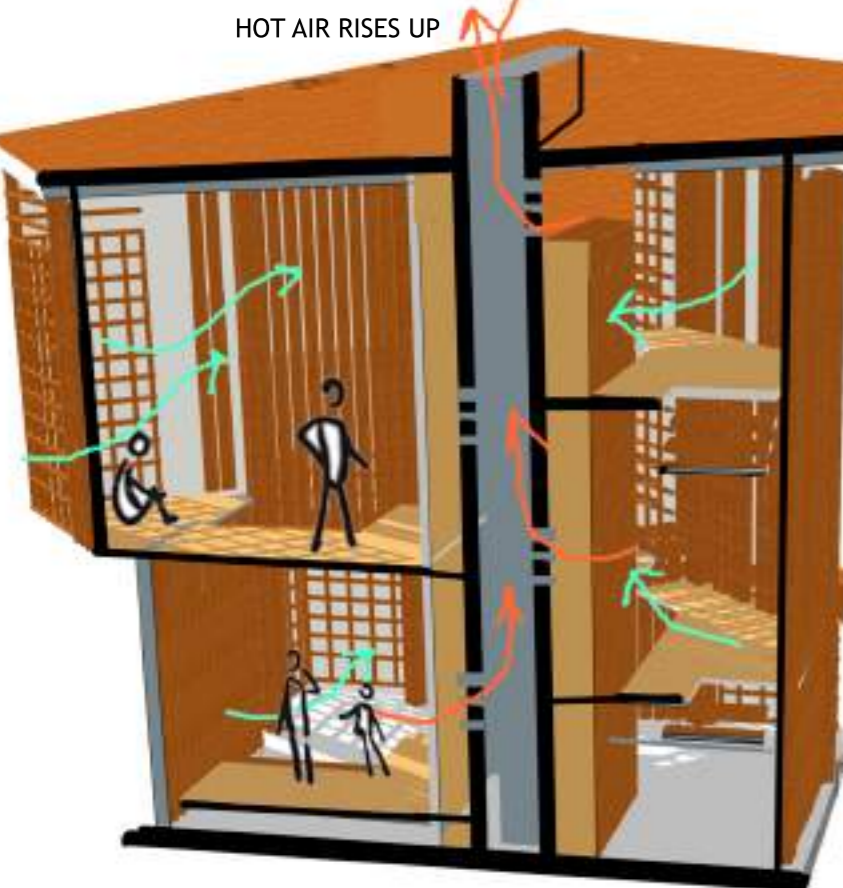
STACKING ONE ON TOP OF ANOTHER



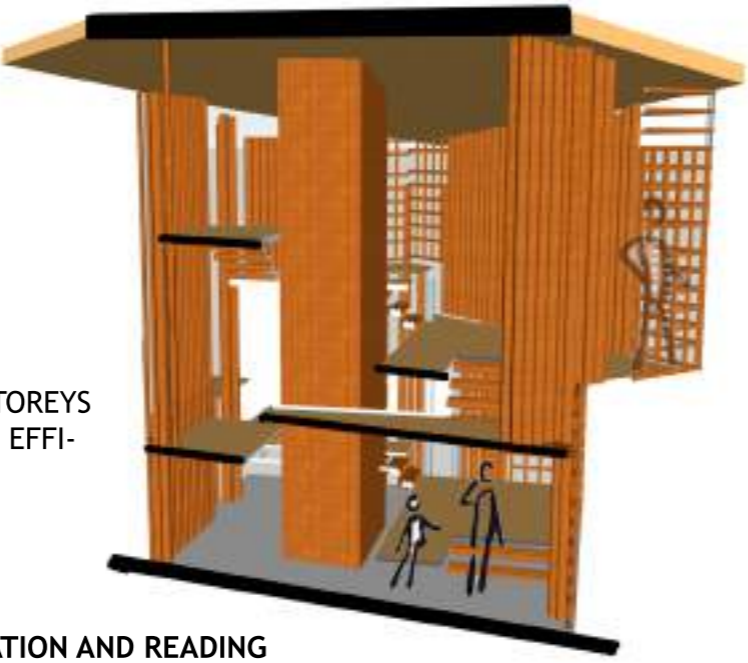
CIRCULATION AND READING ROOM COMBINED INTO ONE

CREATING READING ROOMS AS COZY CORNERS WITH VIEWS TO THE OUTSIDE

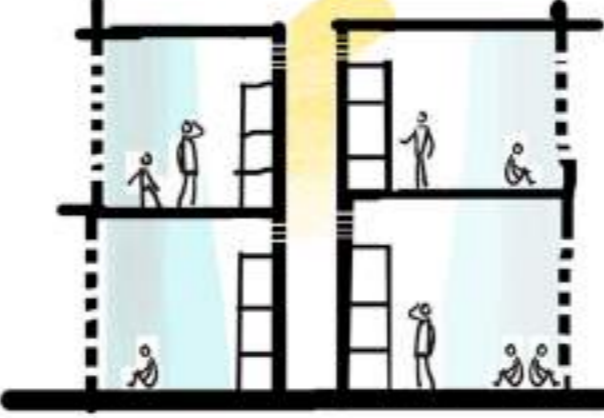
SOLAR CHIMNEY FOR INCREASED VENTILATION ACROSS SPACES



INCREASED AIR MOVEMENT INCREASES COMFORT OF THE ENCLOSED SPACE AS DESIRABLE IN HOT AND HUMID CLIMATES.



SOLAR CHIMNEY LOCATED AT THE CENTRE OF THE ENCLOSED LIBRARY SUCKS IN RISING HOT AIR AND INCREASES AIR CIRCULATION ACROSS SPACE AS FRESH AIR IS PULLED IN FROM OUTSIDE.

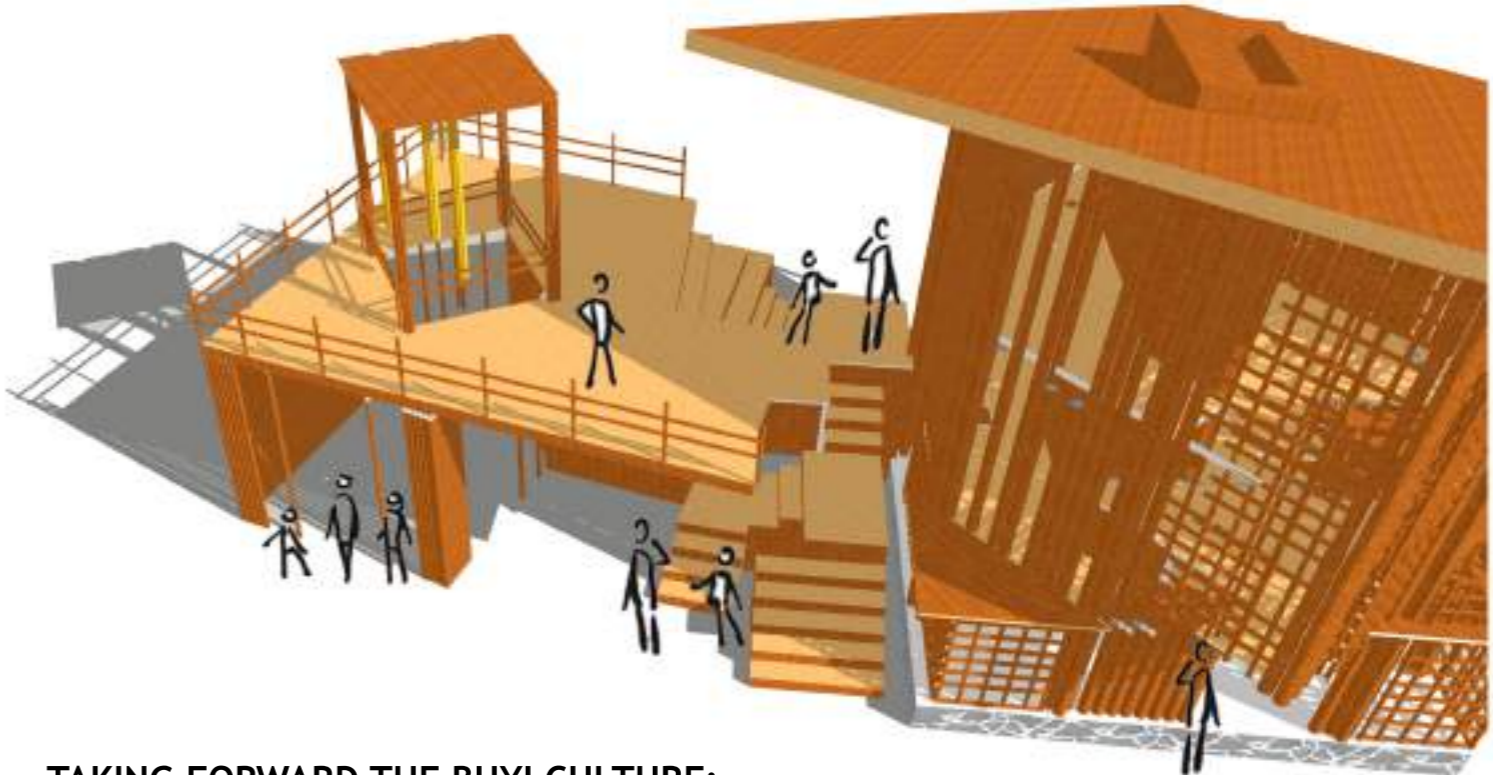


INVERTING SPACES

BOOKS STACKED AT THE CENTRE AND READING ROOMS ARE AT THE PERIPHERY TO PROVIDE MAXIMUM DAYLIT READING SPACES

MUTUAL SHADING FOR STRUCTURES

PLAY AREA FOR CANTEEN SHADED BY ADJACENT STRUCTURE AND SLOPING ROOF



TAKING FORWARD THE BUYI CULTURE:

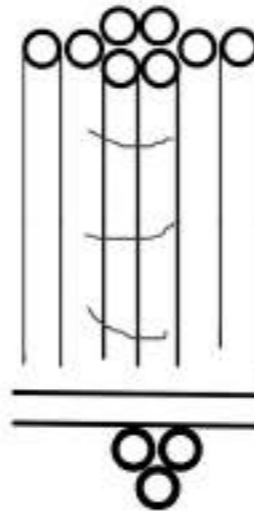
THE BUILDING HOUSES A LARGE BAMBOO WIND CHIME, WHICH ACTS AS A SYMBOL OF THE BUYI TRIBE'S LOVE FOR MUSIC AND OPERA. SMALLER WIND CHIMES HAVE BEEN INCORPORATED IN THE RAILINGS OF THE STAIRCASE LEADING TO THE TERRACE DECK, WHICH ENGAGE THE CHILDREN.

MAIN CANTEEN SPACE IS IN FORM OF A DECK, PARTLY SHADED BY THE ROOF OF THE LIBRARY, WHICH IS INSPIRED FROM THE OUTDOR TERRACES AT THE ENTRANCES OF TRADITIONAL BUYI HOUSES.

MATERIALS AND TEXTURES USING LOCALLY AVAILABLE AND TRADITIONAL MATERIALS

LOCALY AVAILABE STONE AS FOUNDATION AND PLINTH AND CORE OF THE STRUCTURE TO PROVIDE STABILITY AND STRENGTH

USING BAMBOO : ABUNDANTLY AVAILABLE AND SUSTAINABLE FAST GROWING FORM OF TIMBER



CULTURAL SIGNIFICANCE OF BAMBOO : USED FOR MUSICAL INSTRUMENTS AND FOR COOKING BY THE BUYI COMMUNITY

CLUSTER OF FOUR BAMBOOS USED AS COLUMN TO SUPPORT THE LIGHT WEIGHT BAMBOO FRAME WEAVED MAT STRUCTURE

CLUSTER OF BAMBOO USED AS BEAMS UNDER WEAVED BAMBOO MAT FLOORS

