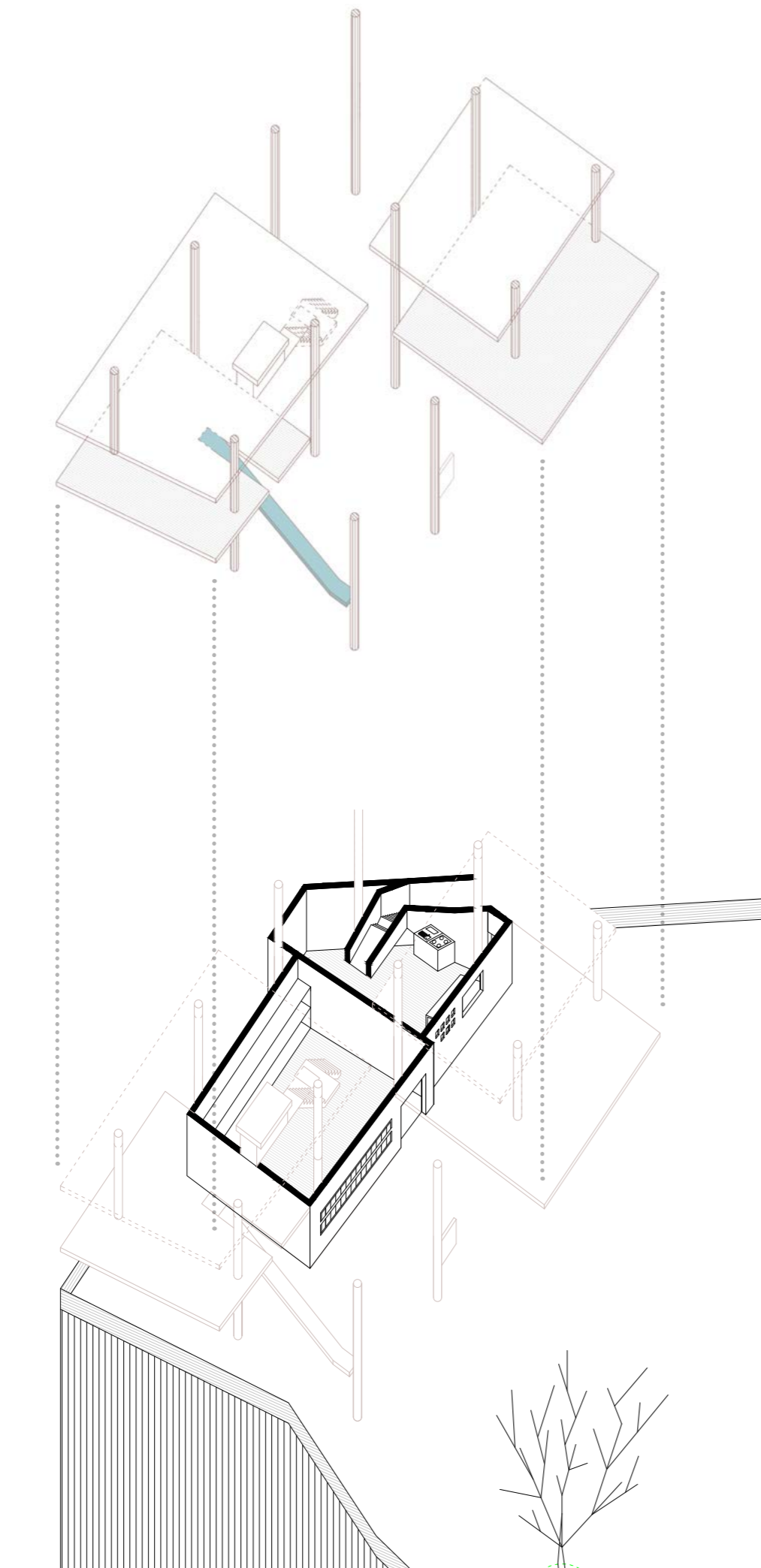


OF RECLAMATION





With the plot occupied by an existing structure, the situation posed an interesting opportunity to experiment with the inclusion of a purposeful extension. A contemporary structure added to the rooted concrete frame, resulting in a new conglomeration of plates that does not obscure the view and allow for maximum flexibility of plan. The plates are carried by wooden columns, an abundant material in the province, to encompass the intervention with the existing. Shifting the tectonics of the whole entity into a contrasting composition of color, texture, position and re-purposing. The feasibility of the approach is to make the intervention minimal, yet allowing for maximum interpretation of the composition with adding of elements, or redefining the resulting usage of the space. With the children as the natural protagonists, and through the use of climbable elements and a slide as part of the circulation, the space invites the curiosity of the students, while serving its main purposes.

As Guizhou province is getting more open to the global scale of development, China has been encompassing a shift towards total urbanization. As different users try to mitigate their way into the new system and to participate in the new order of things, it is important to accept the constituents of the existing context. In this case, the old concrete buildings as an indication of the in-flux of change. The new intervention as a sensitive action that creates an abstract image of the tradition of the Buyi minority. The local knowledge of construction with timber as an indicator of what was then, and the integration with what is there as a presence of what might be.