



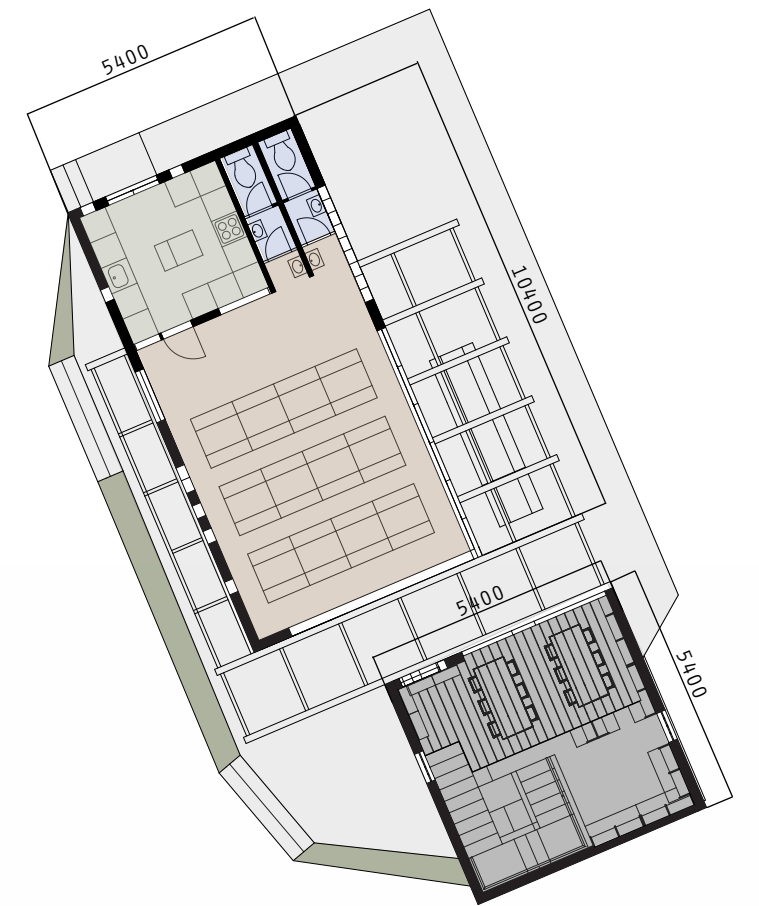


LIBRARY TOWER



CANTEEN

- CANTEEN - 35.3 M²
- KITCHEN - 9.6 M²
- RESTROOMS - 4.1 M²
- LIBRARY - 36.8 M²
- TOTAL - 85.8 M²



MATERIAL

- CONCRETE
- LOCAL STONE
- LOCAL TIMBER
- GLASS