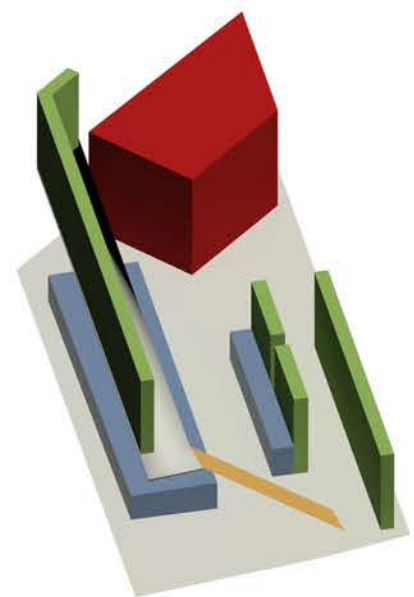
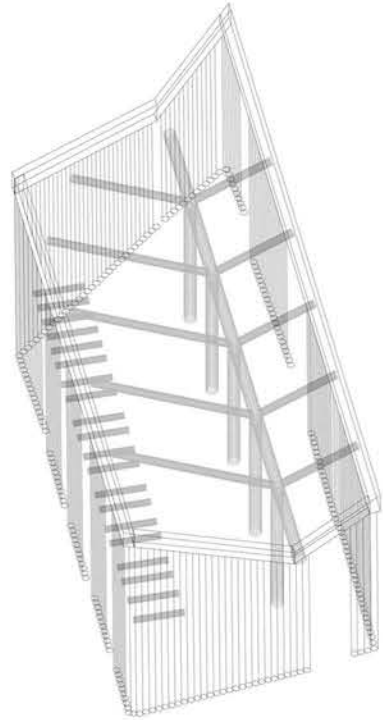


LEARNING FROM PAPER IN PAPER: PAPER TUBE LIBRARY/CANTEEN

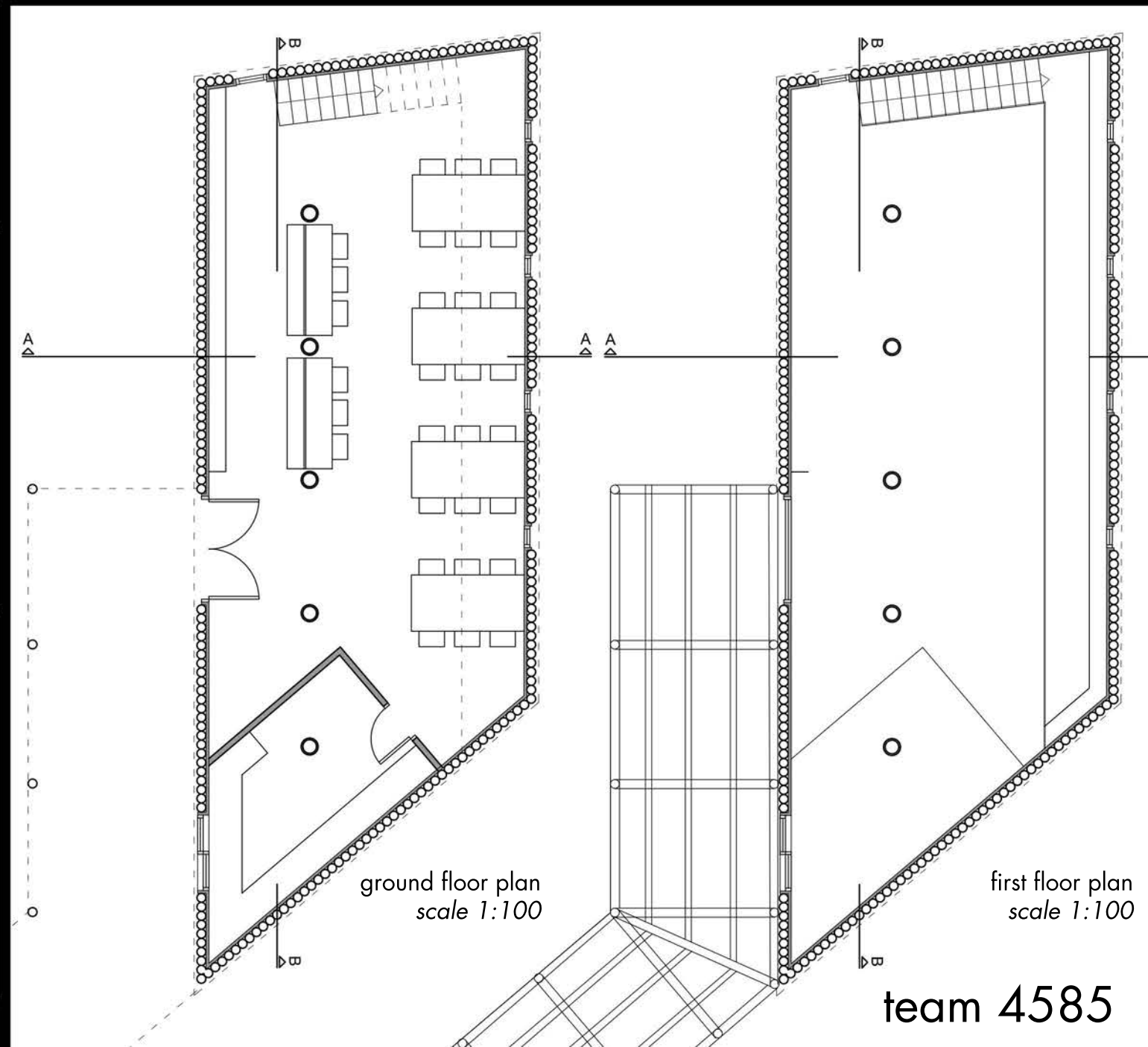
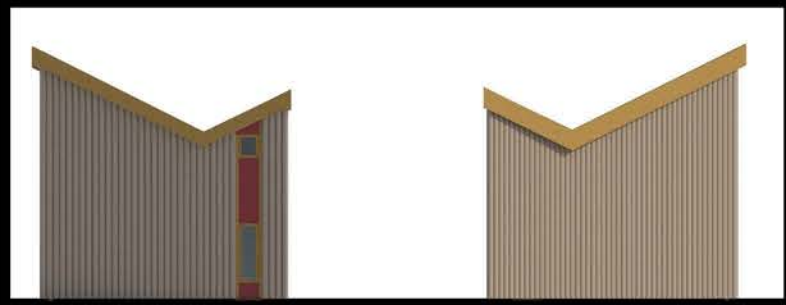
Our project uses paper tubes as the main structural element. The bearing structure is organized around perimetrically continuous paper tubes that stop only when there are openings and with some wider ones in the center of the building. Aside from the paper, plywood is used for the external siding and the rest of the elements (stairs, window frames). The concept aims to create a pleasant space where eating and reading can be combined. The library is distributed over two storeys, with the majority of the space constituting a 'corridor of books' which functions as a vertical visual limit. The exterior of the building is aligned with the landscape and the surroundings of Puan City, aided by use of the natural form of paper and wood which compose the bigger part of the external surface. Moreover, its spatial configuration on the site along and the exterior shelter serve to delimit the school area and create an internal courtyard.



- canteen
- bookshelves
- seating area
- stairs

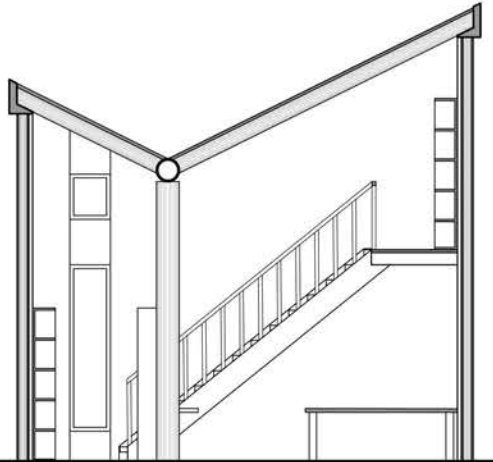
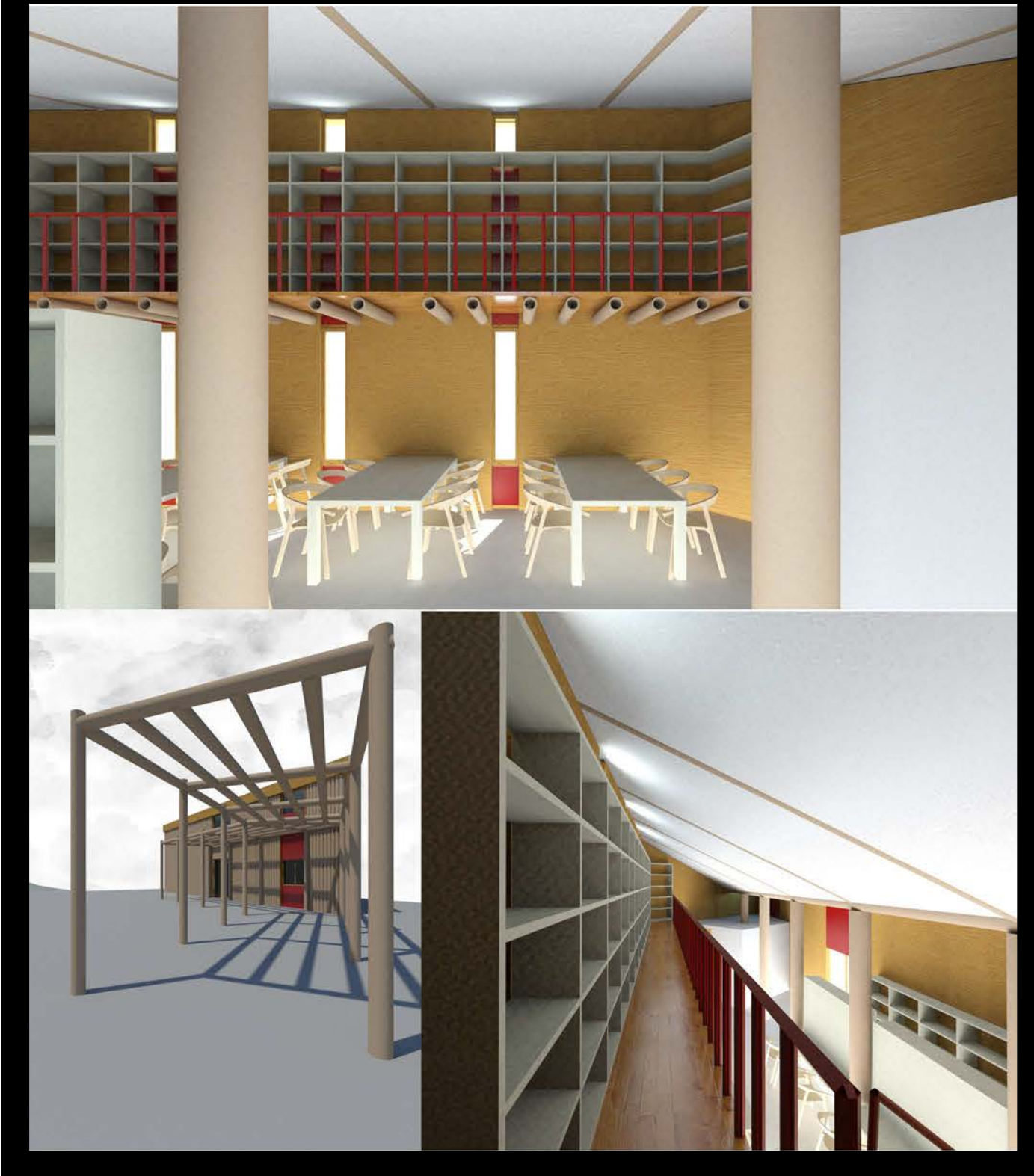
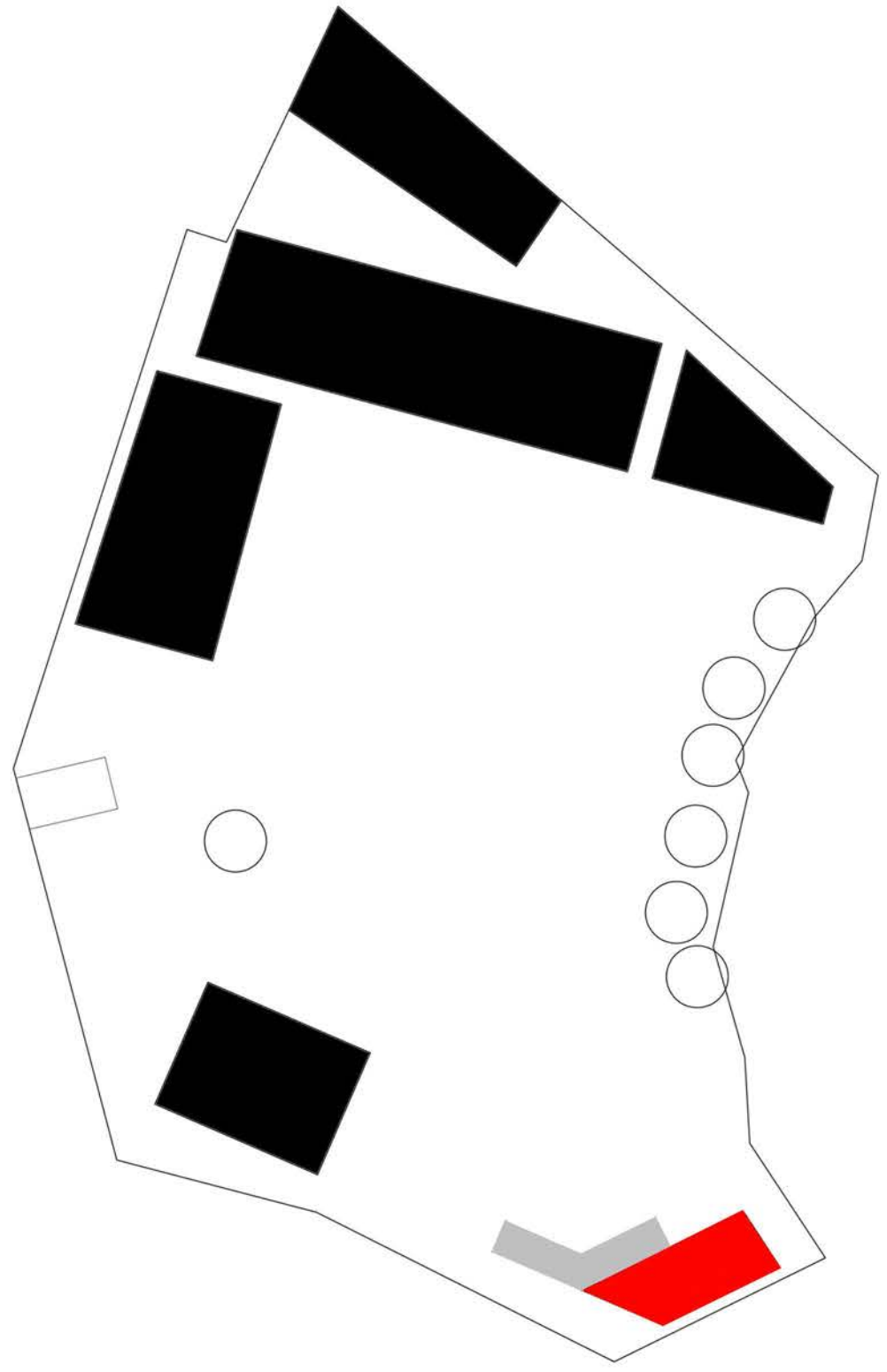
structural diagram

diagram of uses

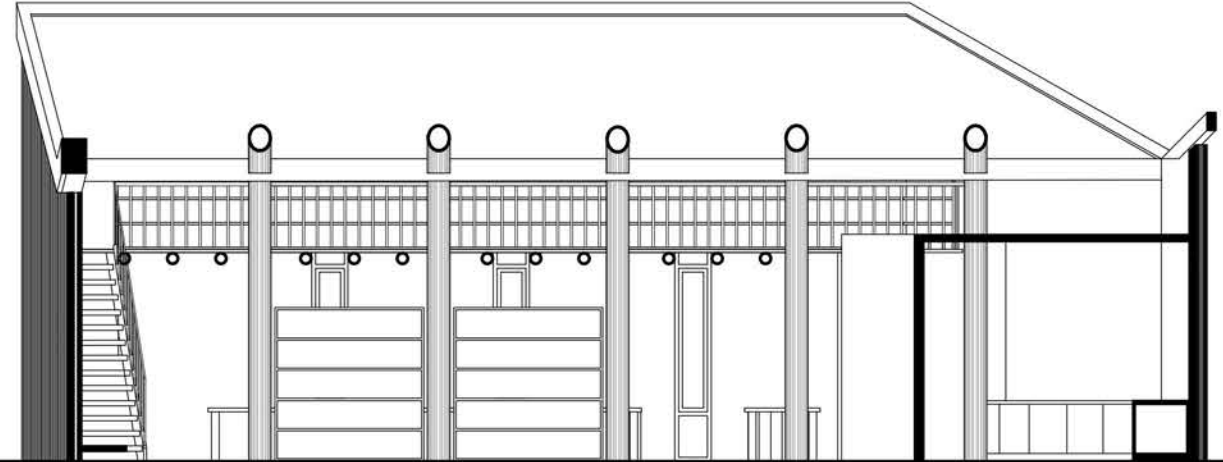


ground floor plan scale 1:100

first floor plan scale 1:100



section A-A, scale 1:100



section B-B, scale 1:100