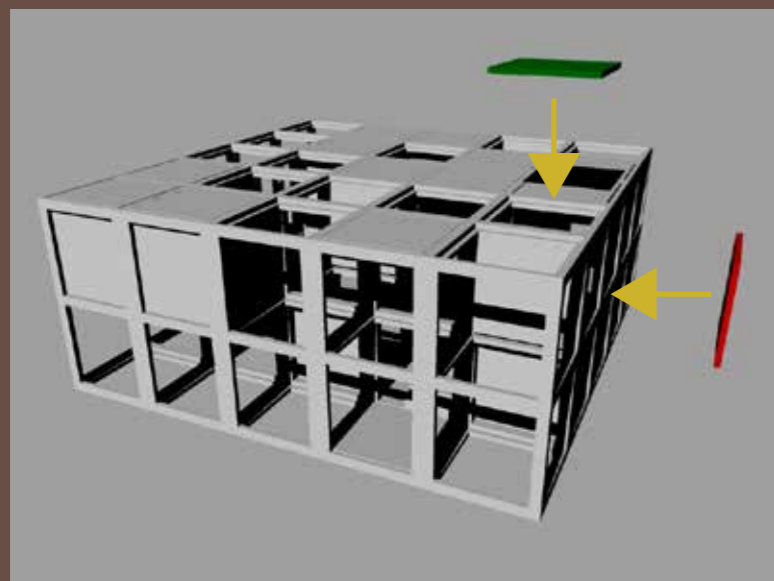
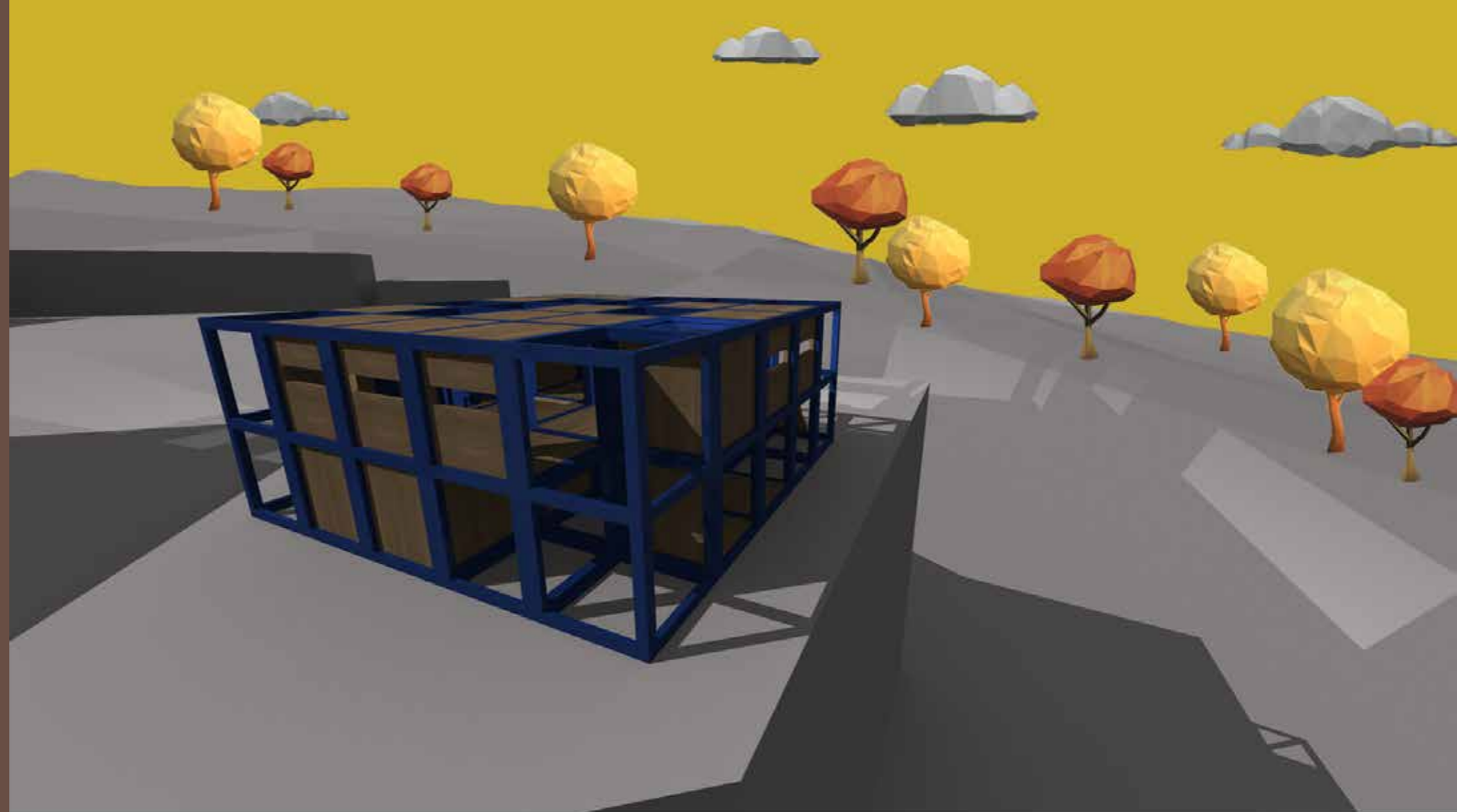


Canteen and library building

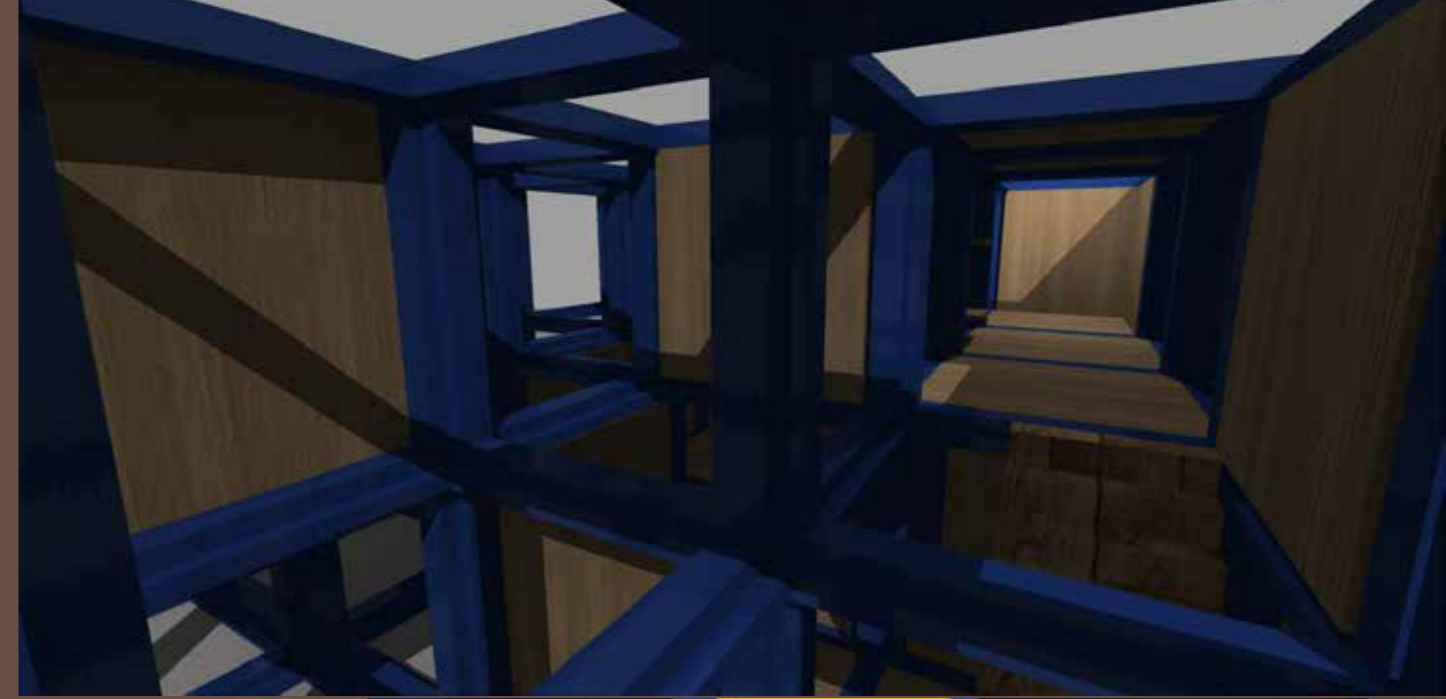
based on the review of the local data , we have found that the most commonly used materials in this specific region are wood stone and brick . as we go further and investigate the clothing traditions and the celebrations of the region , a highly minimal core behavior is observd. the core minimalism of the concept though sometimes is accompanied by the very elaborate decorative elements in each of the above mentiond categori es



from the start of the process , our struggle was to create a structure that provides simple and fast ways for changing and extend the spaces . we came up with the idea of cube, wich could be used both as table for reading and dinning. the pure geometrical cube gives us the opportunity of providing



since the project aims at the elementary school level,we have tried to make the concept as interactive and flexible as possible . so, following the above mentioned idea,a column and a beams alongside with some wooden planes, sounds like good candidates for making flexible spaces. to make it more flexible and ready for further changes as needed ,we decided to have a base structure that allows us to place wooden plates - as walls or floors . using this simple Mechanisms , there are infinite ways to make rooms , open spaces and etc. These planes can be altered based on the need of the users,and make new space configurations possible. As we go further,for connecting these cubes, we thought of fold-able walls.



The fold-ables, can be morphed into stairs, making it possible for the students to affect and change the space per need. also these walls, can turn the indoor spaces into the outdoor, and vice versa.

The interior of the cubes are thought to be interactive too, so they are many fixtures and hinges that enables students to make the needed furniture. Students can attach or detach these parts and make the necessary needed furnitures.

The pure geometrical cube, creates a simple space that captures the feeling and shape of the traditional architecture of the region.

