

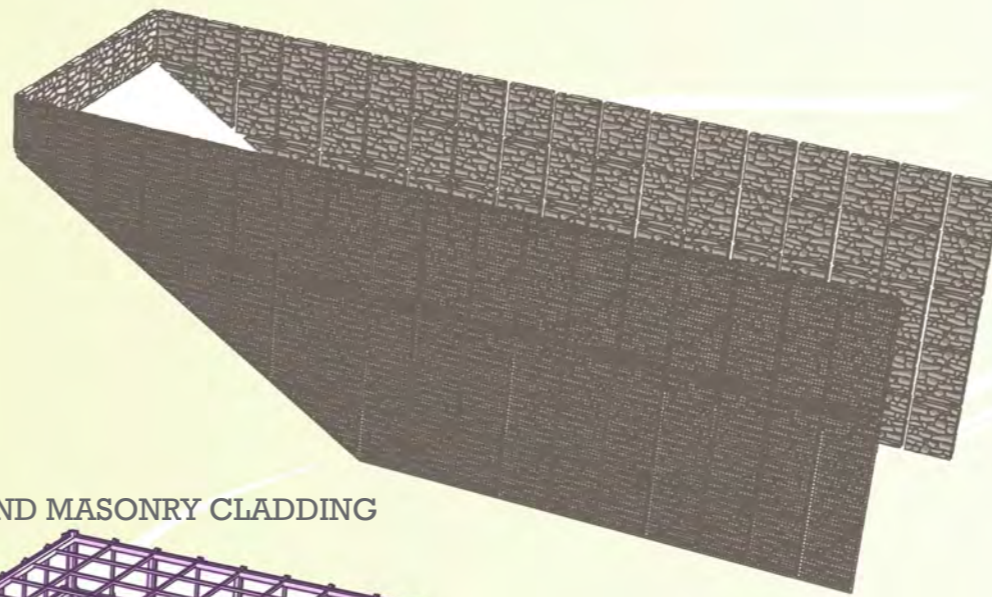
Inspired by vernacular houses of Buyi, the structure is raised on stilts and wrapped in layers of materials, which resemble layers of rice fields in nature. Wooden interior and exterior stone cladding reflect materials used in traditional architecture. The choice of steel for the structural frame is driven by China's leading position in its production in the world. Study of ancient Chinese wooden joinery techniques led towards exploration of similar connections in steel, which eliminated the need of skillful craftsmanship as wooden connections did. Pre-fabricated steel members can be easily assembled at the site to form main structural envelope. The form is defined by the program layout and oriented towards the views of the extensive landscapes around the site.



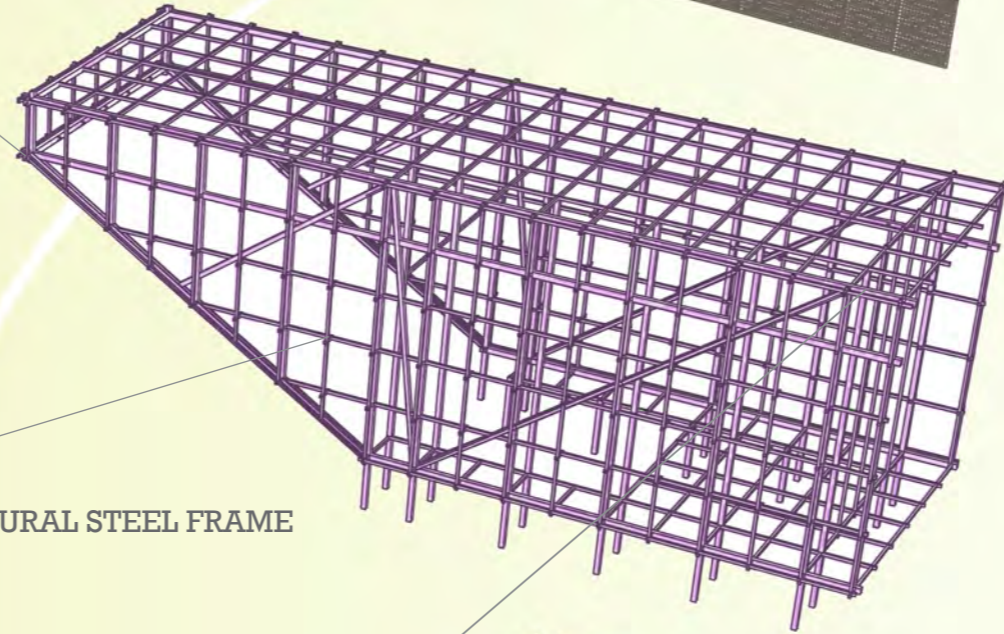
Cross Member Connection Detail



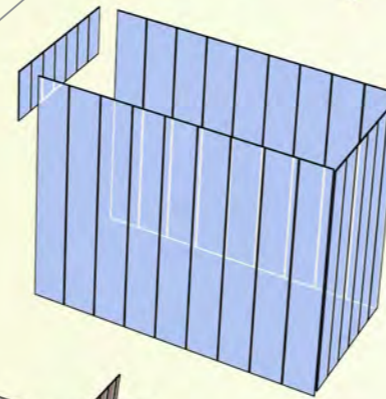
Rafter Connection Detail



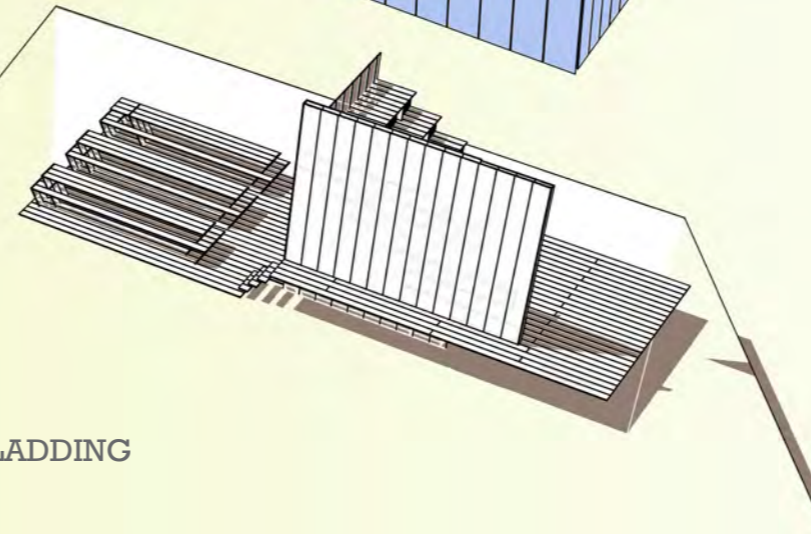
WIRE MESH AND MASONRY CLADDING



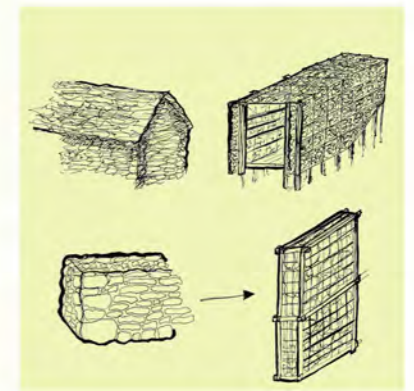
STRUCTURAL STEEL FRAME



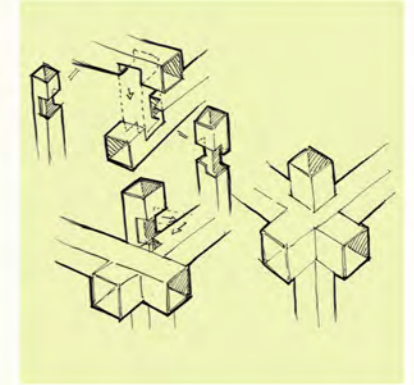
GLASS ENVELOPE



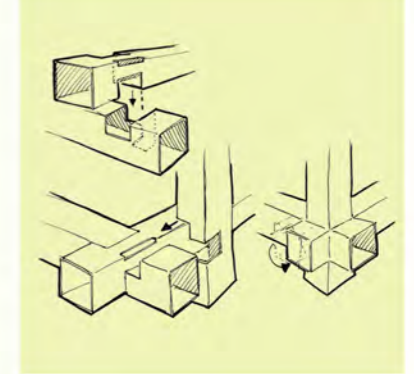
INTERIOR WOOD CLADDING



Masonry Studies



Traditional Joinery Studies



Form Studies

