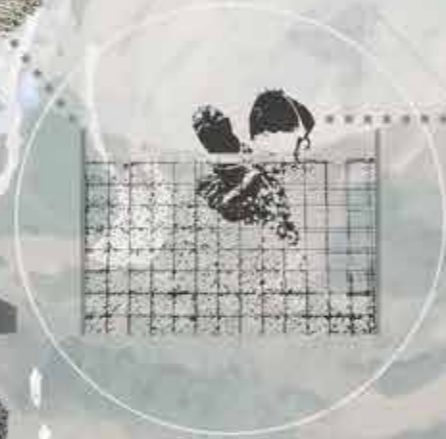
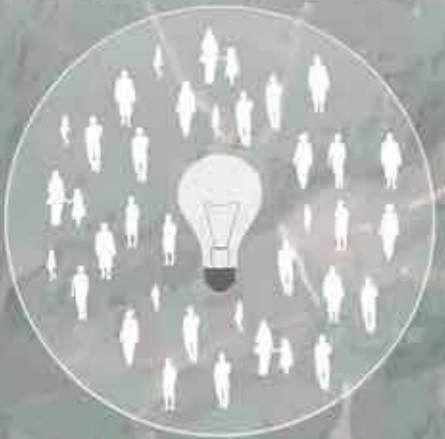
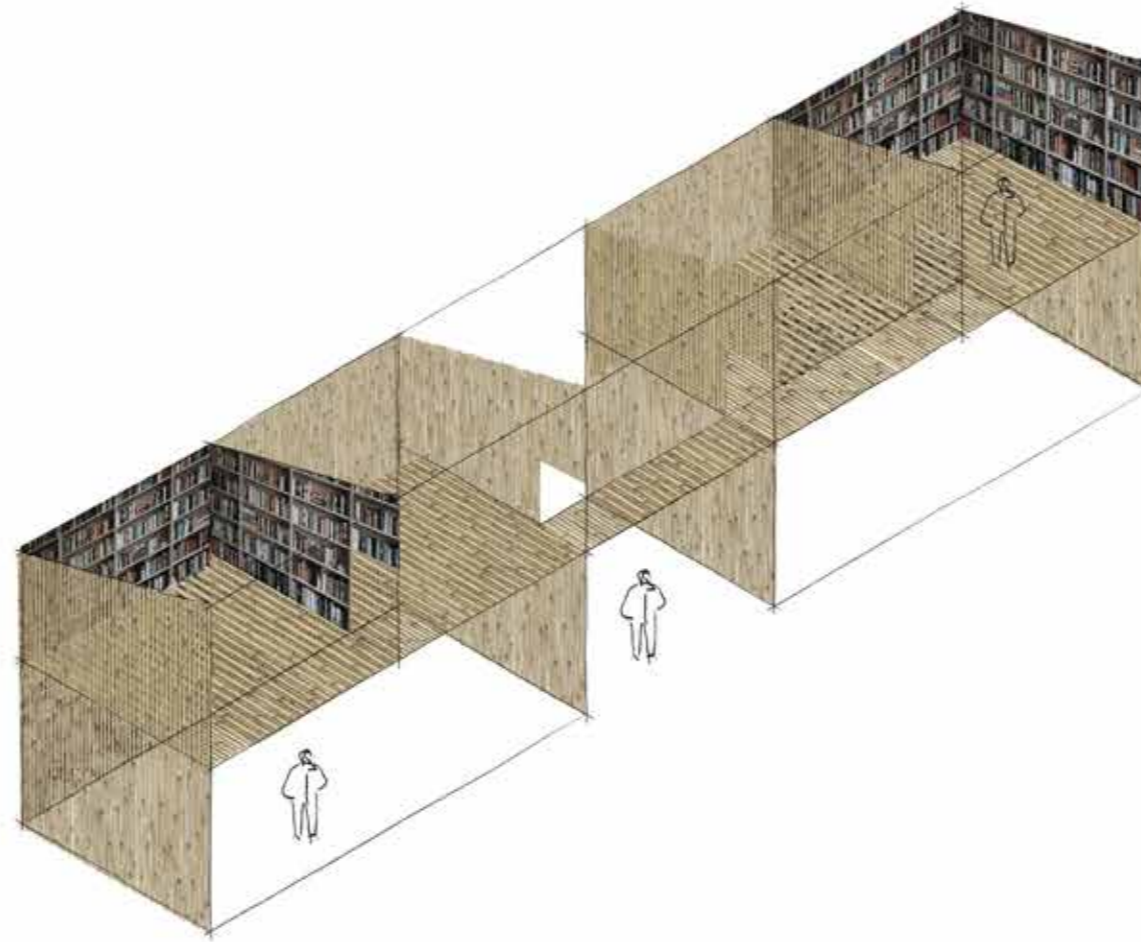


# A CO-CRUSHED AFTERLIFE



# THE INITIAL CO-CONSTRUCTED SPACE



THE SIMPLE CONSTRUCTION CONSISTS OF CRUSHED MATERIAL FROM THE EXISTING BUILDING ALONGSIDE WITH A LIGHT BAMBOO CONSTRUCTION WHICH GIVES THE POSSIBILITY OF VIEWS, VENTILATION AND SHELTER FROM RAIN AND WIND.

