

CANTEEN AND LIBRARY BUILDING FOR THE LIANGMENG SCHOOL COMPLEX



# CANTEEN AND LIBRARY BUILDING FOR THE LIANGMENG SCHOOL COMPLEX

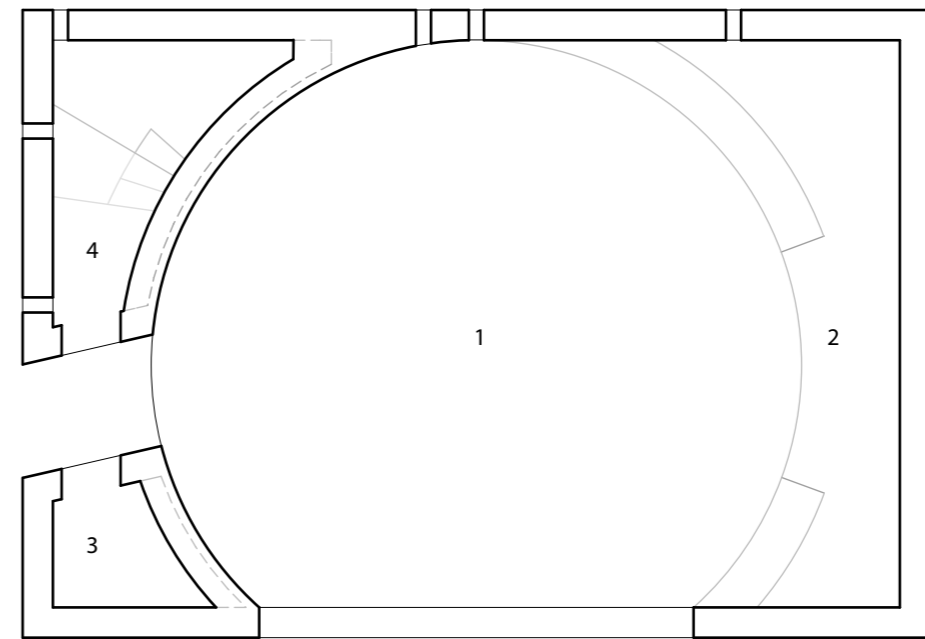
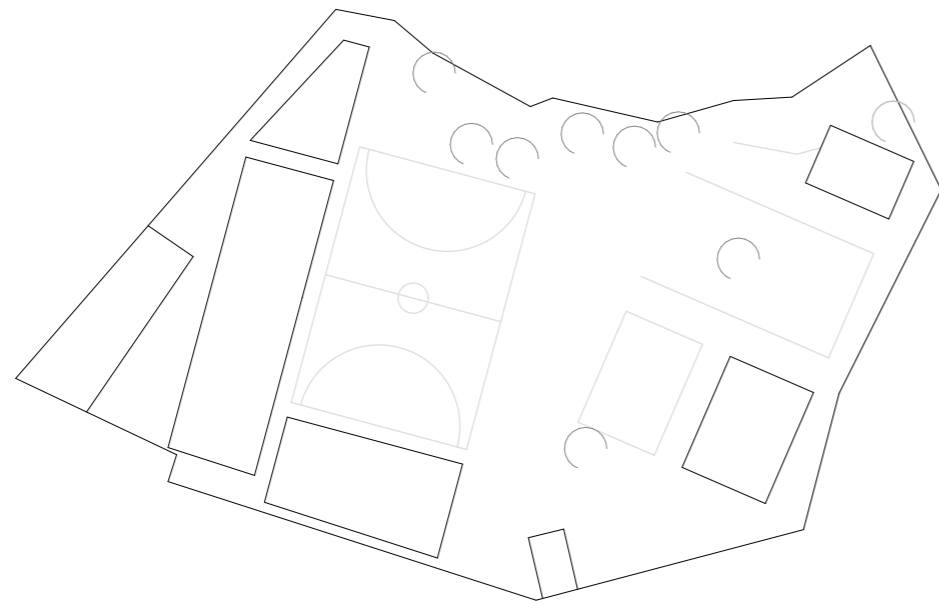
THE NEW CONSTRUCTION CREATES A GATHERING PLACE FOR THE SCHOOL COMMUNITY. THE CANTEEN AND LIBRARY BUILDING IS RECTANGULAR AND SINGLE-FLOORED. THE SURFACIES AND THE WALLS OF STONE ARE BASED ON THE TRADITIONAL LOCAL STRUCTURE. DUE TO THE POSITION A NEW SMALL SCHOOLYARD IS SHAPED AND THE SCHOOL CAMPUS IS JOINED.

THE CENTER OF THE NEW BUILDING IS THE AVERAGE SPACE (1)- ORIENTED TO THE SMALL SCHOOLYARD.

WITH THE OPEN KITCHEN(2) THIS SPACE PROVIDES COLLECTIVE MEALS AND COMMUNICATION.

IN ADDITION THE USE IS ADJUSTABLE- WHEN THE CANTEEN IS NOT IN USE, THERE IS ENOUGH SPACE TO WORK WITH IMMEDIATE CONNECTION TO THE LIBRARY.

THE LIBRARY (4) IS AN INDEPENDENT ROOM- THEREFOR QUIET AND CONCENTRATION ARE ENSURED.



- 1 center
- 2 kitchen
- 3 storage
- 4 library

