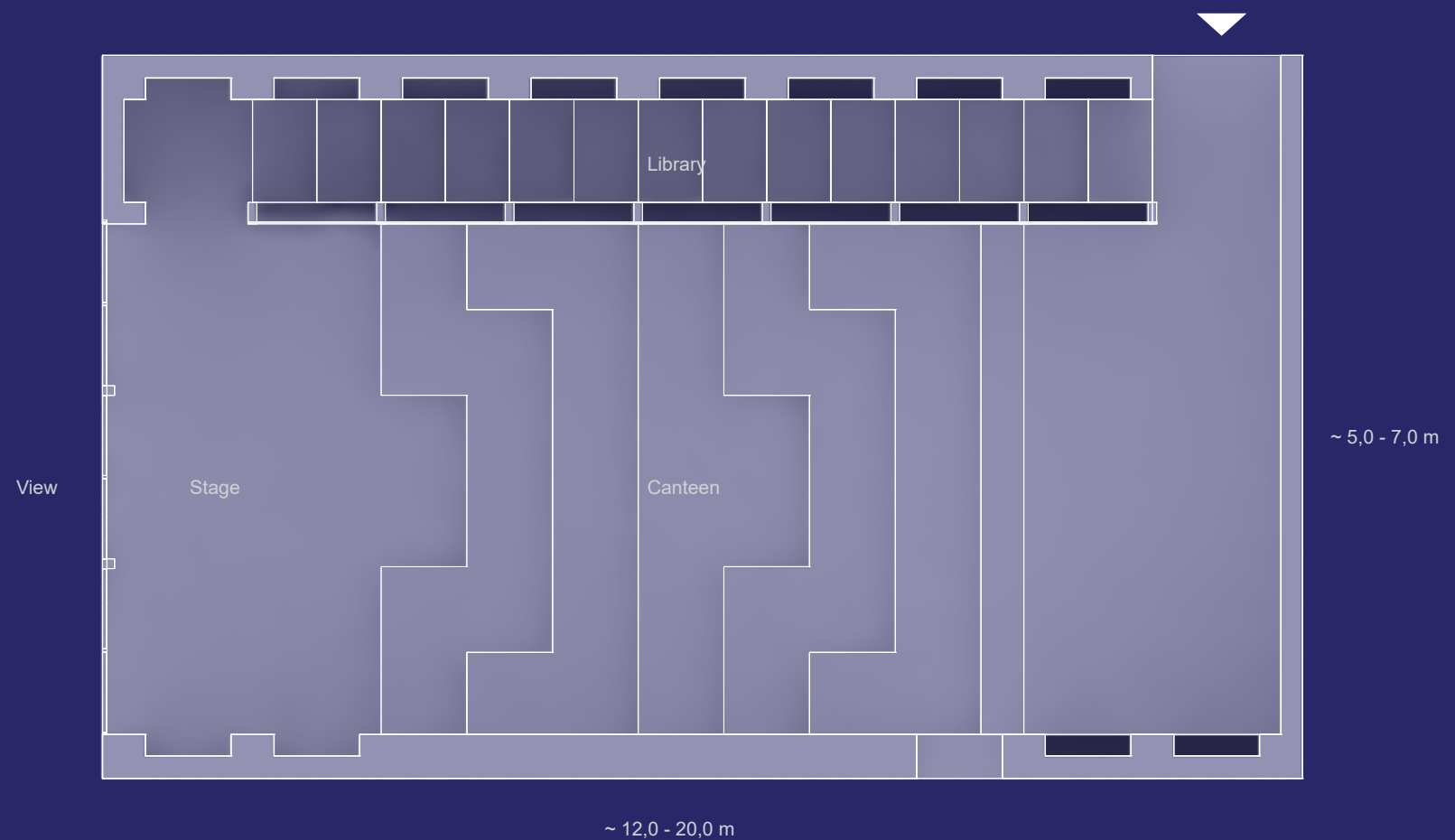
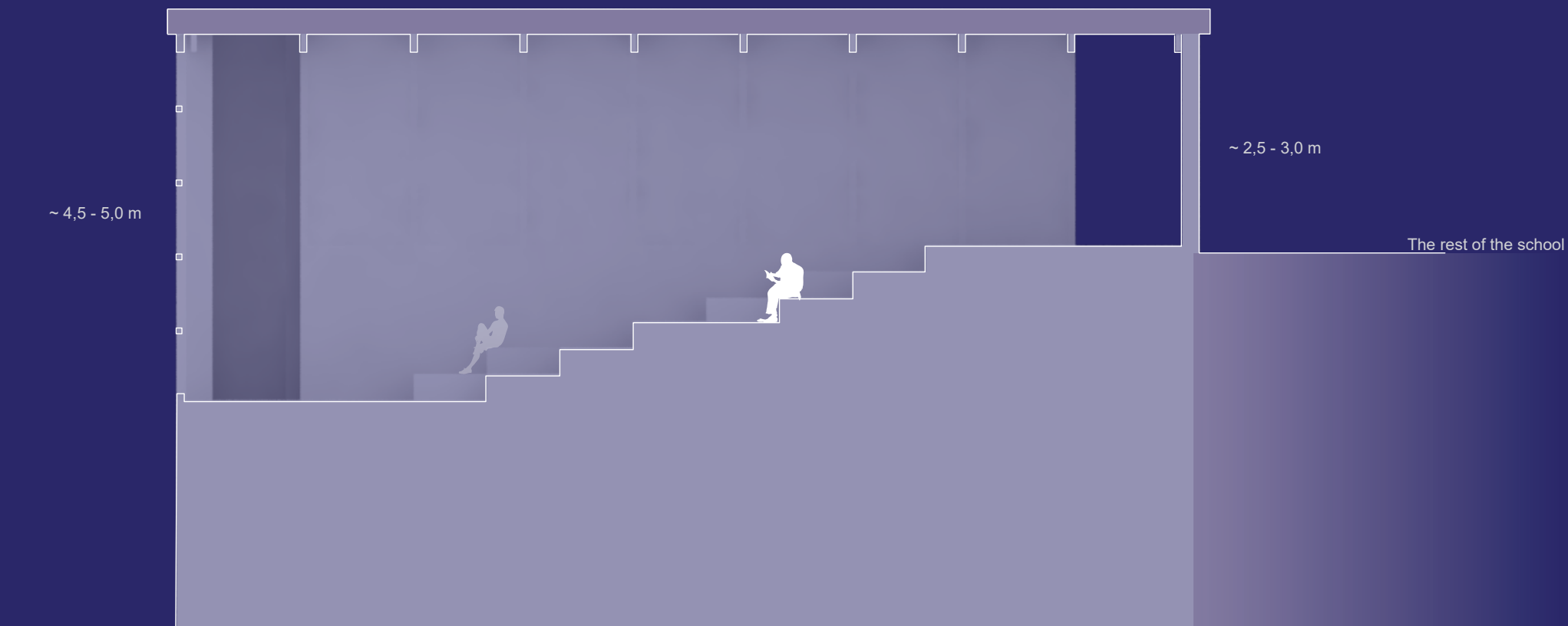


NO!

Team4166 will not make a specific design for a place we have not visited nor have deep knowledge about how it is to live there. Too many architects make architecture that isn't really site-specific, because it is easy to 'visit' through the internet. The same goes for this assignment.

This is a project with a humble approach.

This is what Team4166 thinks could emphasize the qualities of the area from what we have of knowledge. Here's a guide for the main elements of the project. The elements can be distorted, rotated or even have another shape.



Principles of the elements

- ① **Narrow House**
For a shorter span and a greater availability of the wood

- ② **The stage**
An area, where school assembly or even a small theater piece can be set up.

- ③ **The library**
Narrow and high.
Often used books close to floor and books for storage in the top.

- ④ **The canteen**
Without tables, but with great possibilities for alternative positions after a long day at the school table.
The rows pointing towards the windows and the magnificent view.

- ⑤ **Large window area**
Subdivided for cheap & easier replacement. The direction should be towards the most dramatic scene in the area.

