

OPENNESS TO EXPERIENCE

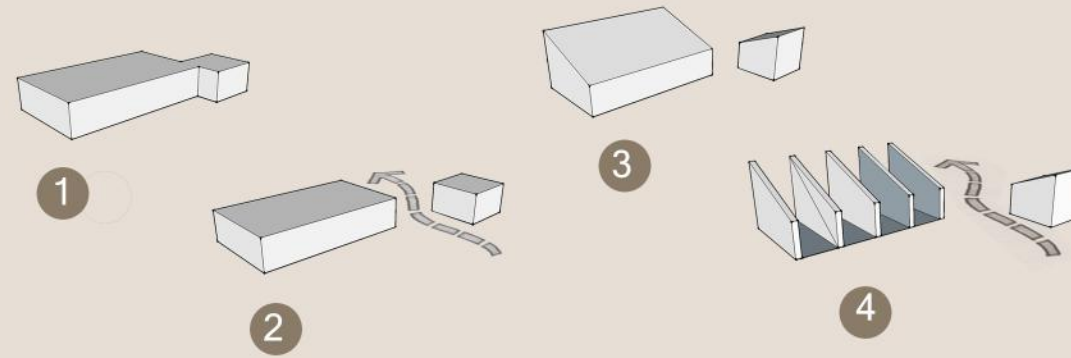
"If you have a garden and a library, you have everything you need"

- Cicero

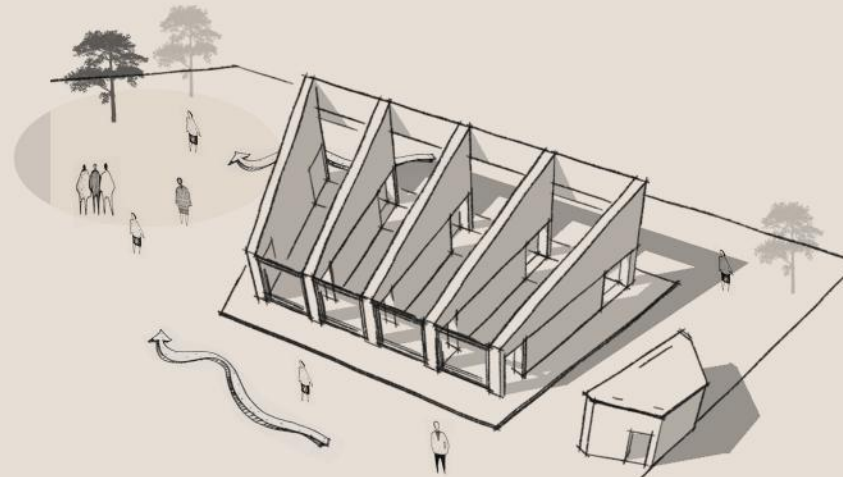
The brain of a primary school child is like a clay where he himself is the moulder. At such a young age they have nothing to fear about. In some kids, curiosity is inherent but in others it has to be induced.

A library provides new experiences or at least the possibilities to new experiences. So the space is being created where the built form merges with the nature showing an open gesture.

FORM DEVELOPMENT

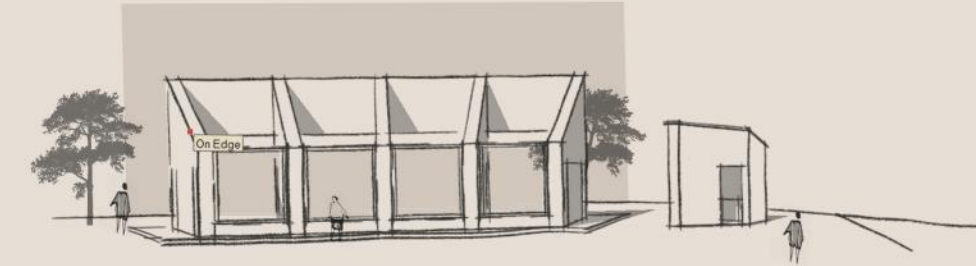


Use of basic form of cuboids. Separated the two blocks to give passage between them so as to maintain the connectivity with the school complex. Angles was given to the roof so as to merge the general style of built forms. Giving small space to canteen for the efficient utilization of site.



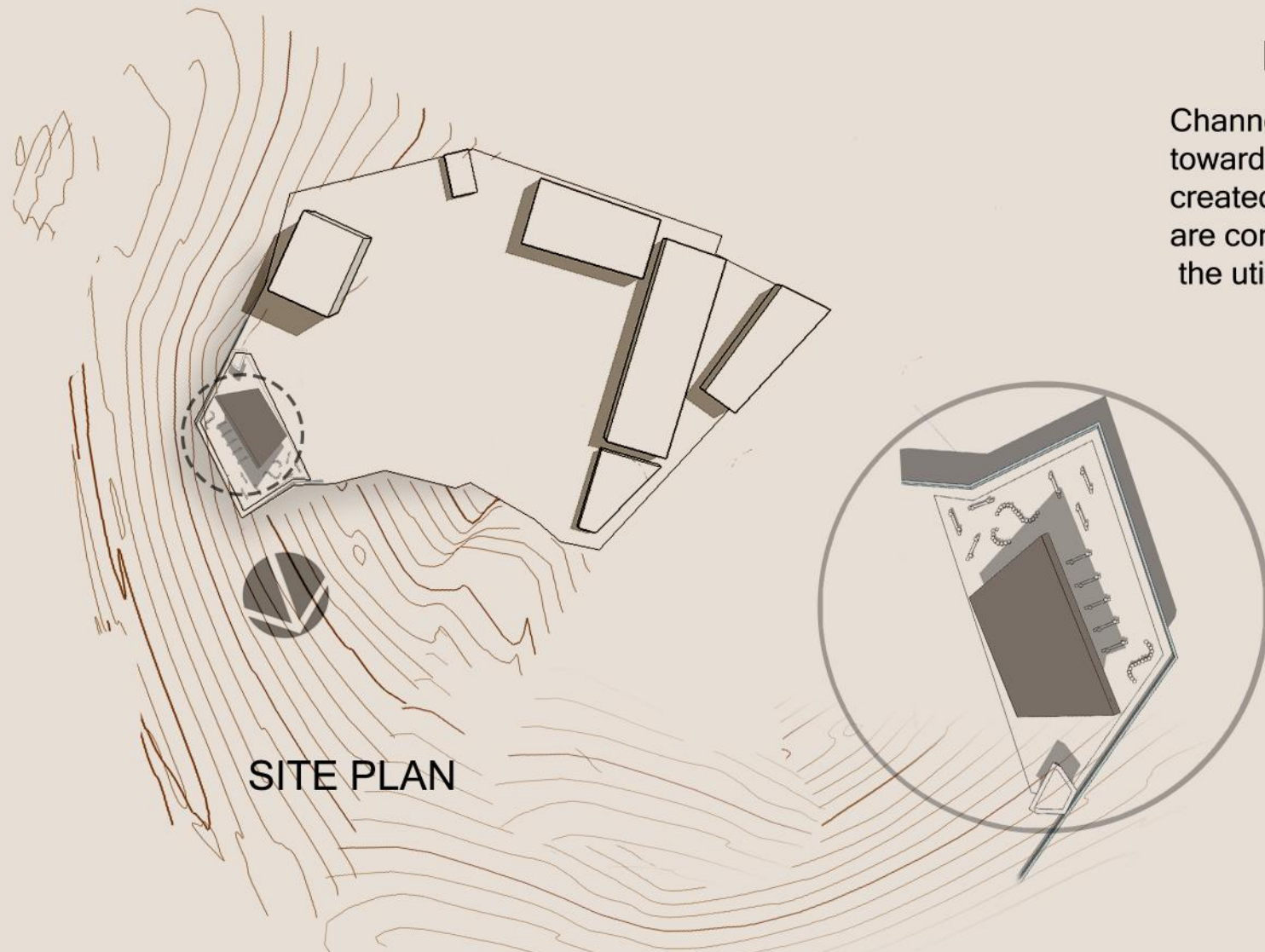
HOT SPOT

Channelizing the pathway towards the recreational space created. Canteen and the landscaping are complimenting the space enhancing the utilization making it as multipurpose

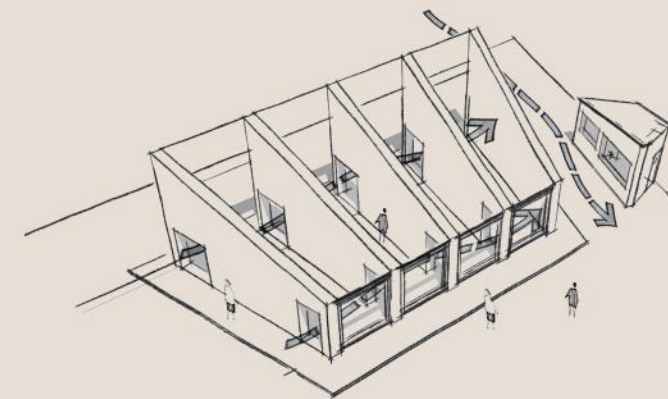


FRAMING

Merging the built form with the view and the landscape making an interactive environment.

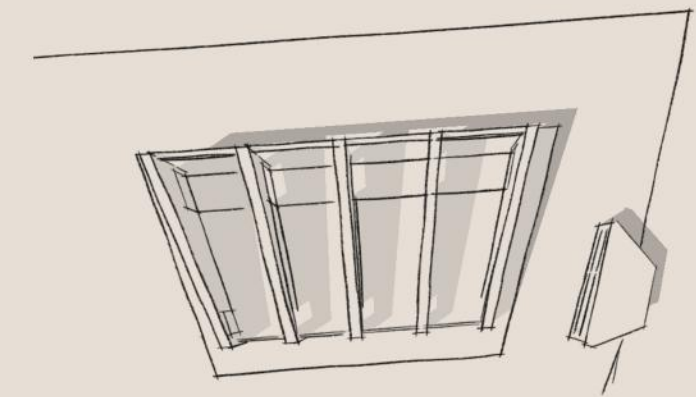


SITE PLAN



CIRCULATION

A pathway through the store of knowledge. Also for ventilation jali frame is created.



Why at an angle ?
For the parallax correction.

ROOF
- slates locally available

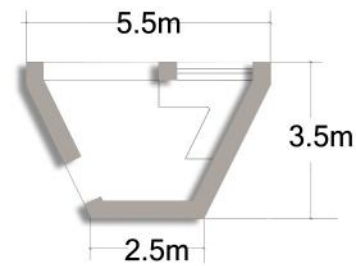
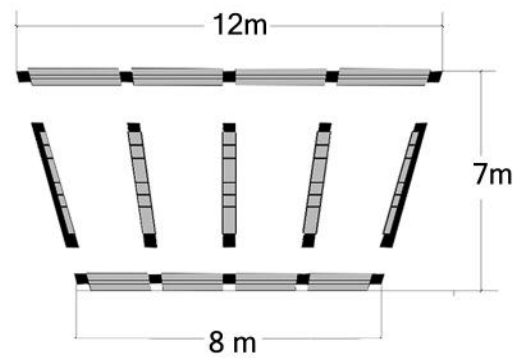
RAFTER
- wood

WALL
- stone with
random rubble
masonry

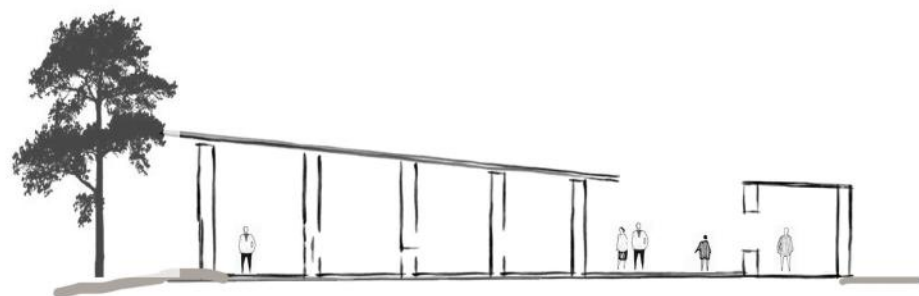
Book shelves
- stone slabs
of 4cm using
post and lintel
method

**WINDOW
FRAME**
- wood

JALI
(as ventilators)-
bamboo frames for
incoming of diffused
reflections



PLAN



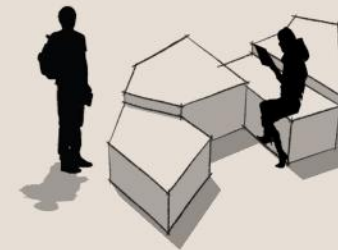
SECTIONS



The hierarchy of shelves is maintained according to the age of the users



the fenestration element is being used as a sitting space to read and at same time interact with the outside nature.



Raw stone block used as sitting making patterns



use of raw wooden logs making a compositinn for children to sit together