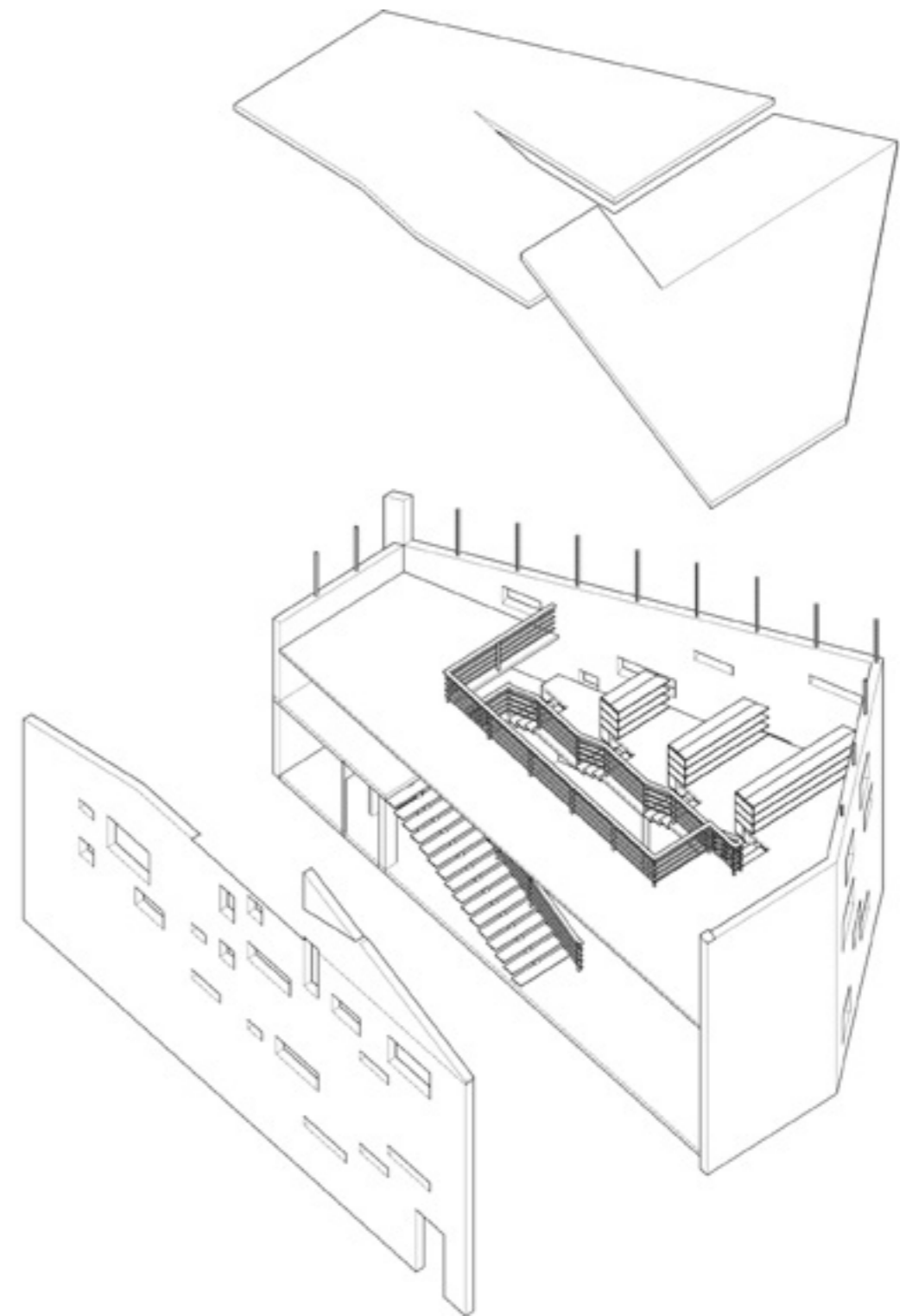




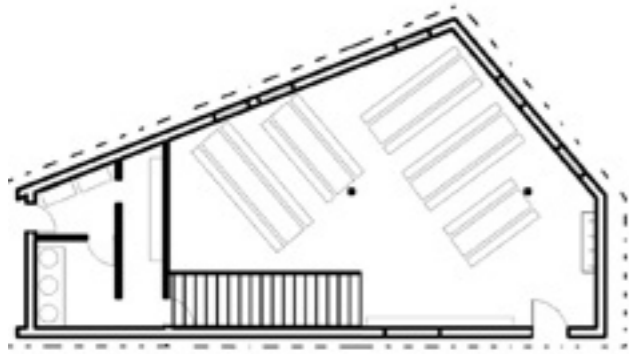
To preserve the Buyi culture To provide interesting and effective space for students

Architectures, to some degree, could represent and preserve the culture in one area, which now are gradually replaced by simple and uniform construction in China. The lifestyle, the customs and the relationship of people could all be inherited by architectures. However, the identity of local architecture does no longer exist influenced by this phenomenon.

One of our proposals is to adapt the stone material in this building, which is one of the traditional materials of Buyi architectures since the surrounding buildings are mostly built by simple and uniform bricks. The aim to utilize the stone is to enhance the awareness of traditional culture and to achieve the economical purpose.



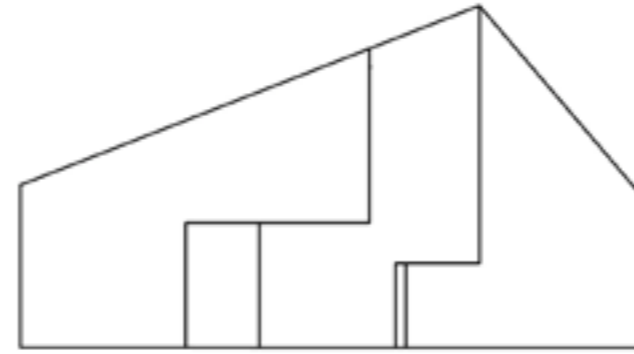
Then, in order to ensure both interests and the effectiveness of the canteen and library, the division of the space will define different experiences of the space and enhance the interaction with other students. The skylight is also provided to the interior space by the different openings on the roof following the topography of the slope to improve the integration of the environment and the building.



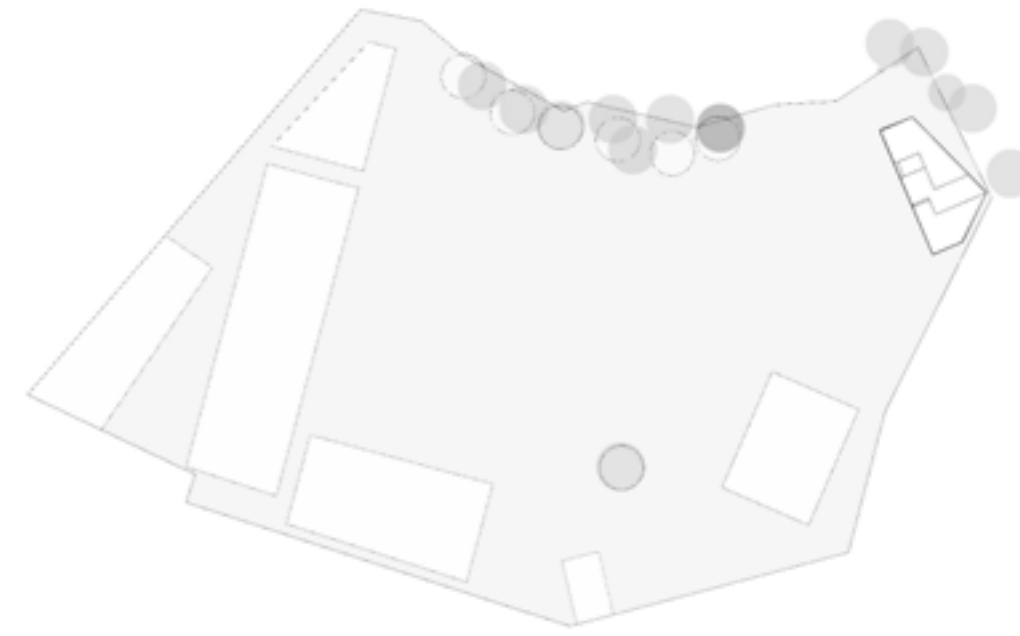
1st Floor Plan 1:200



2nd Floor plan 1: 200



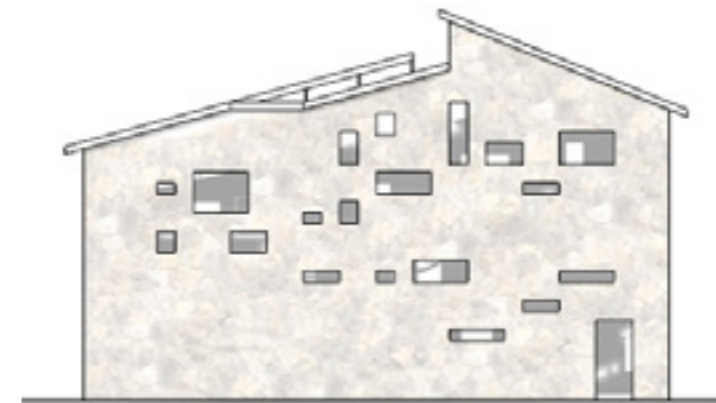
Roof plan 1: 200



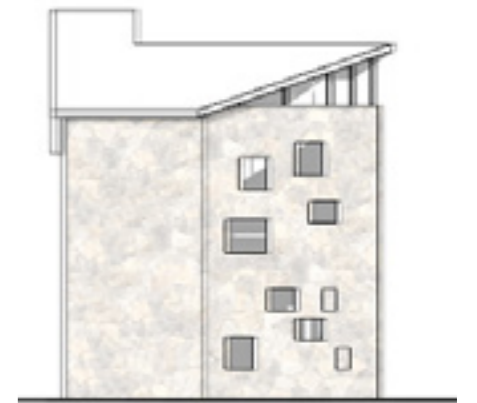
Master Plan 1:1000



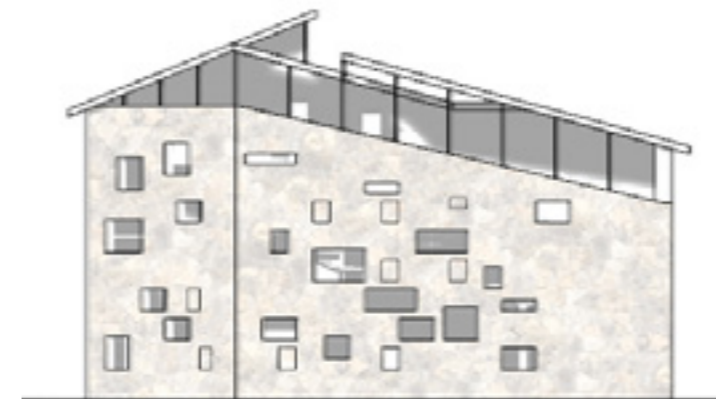
Section 1:100



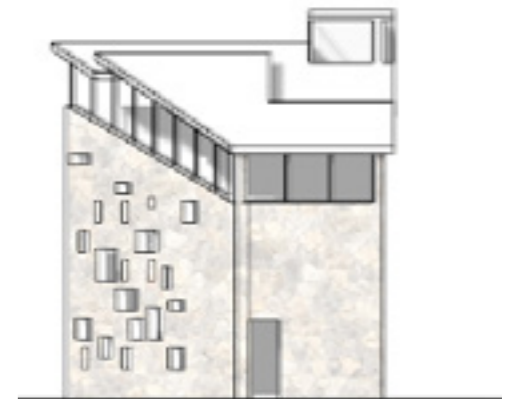
West Elevation 1:200



South Elevation 1:200



East Elevation 1:200



North Elevation 1:200