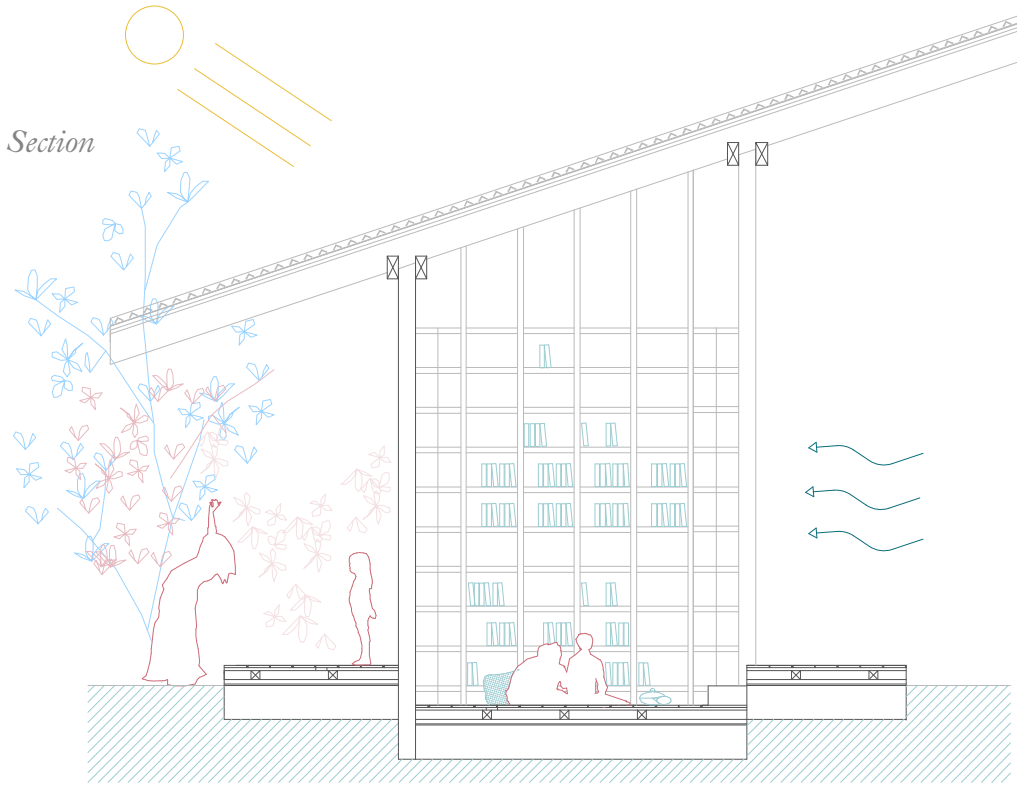
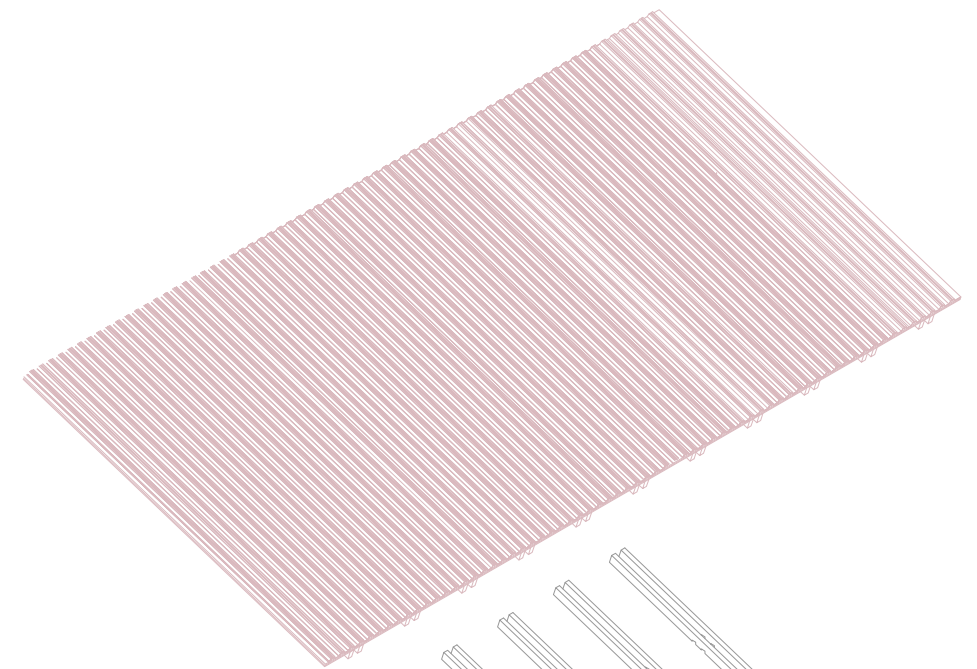


Cross Section

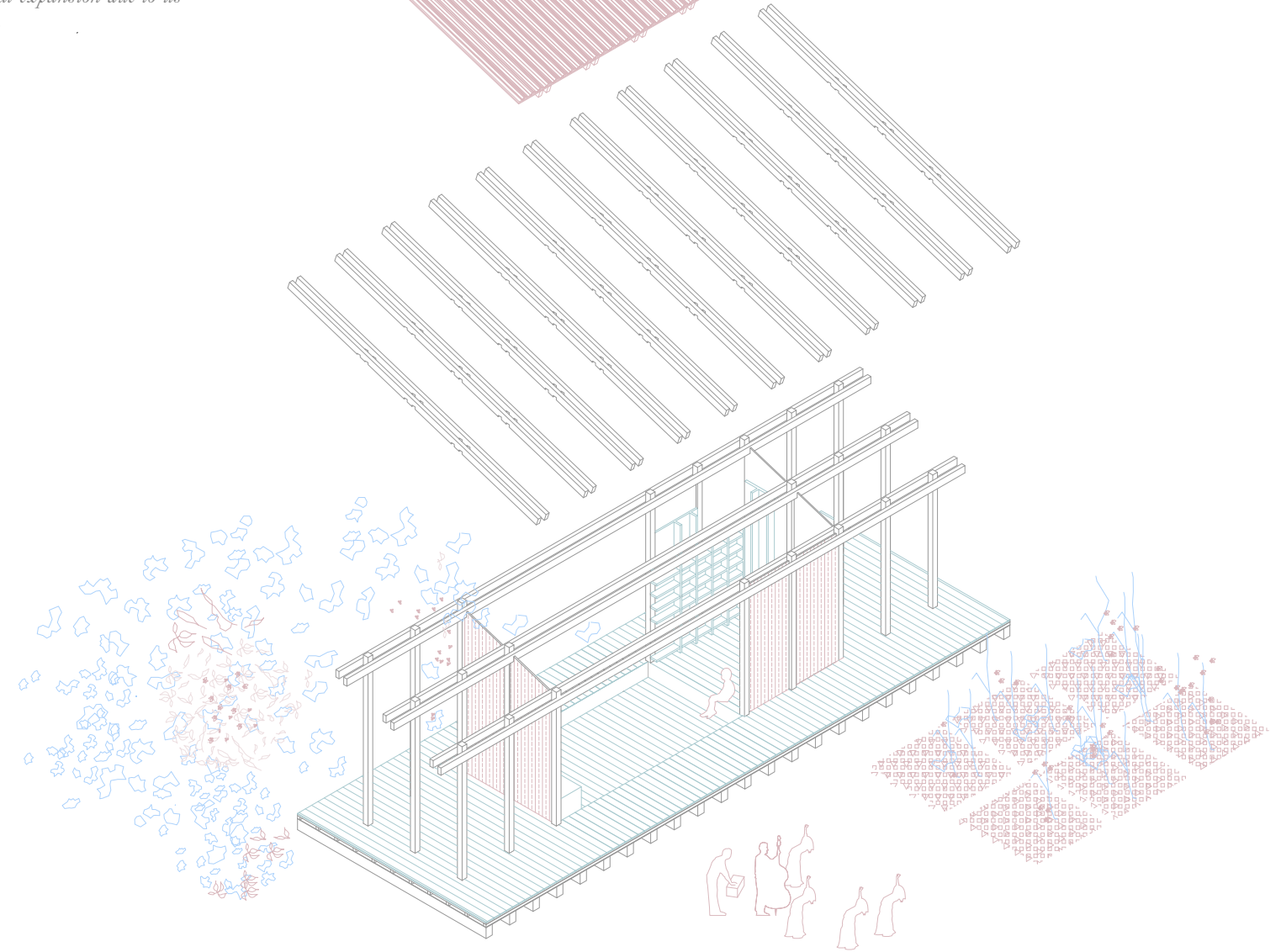
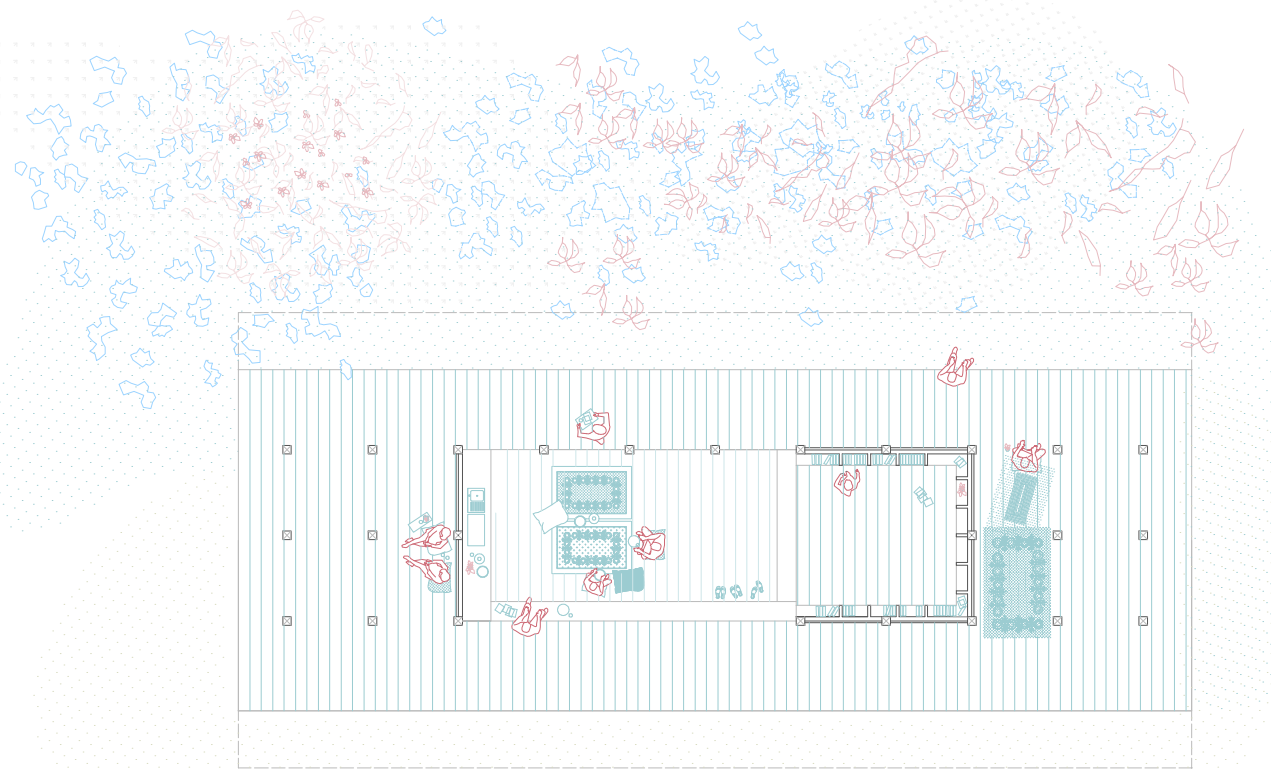


Exploited Axonometric

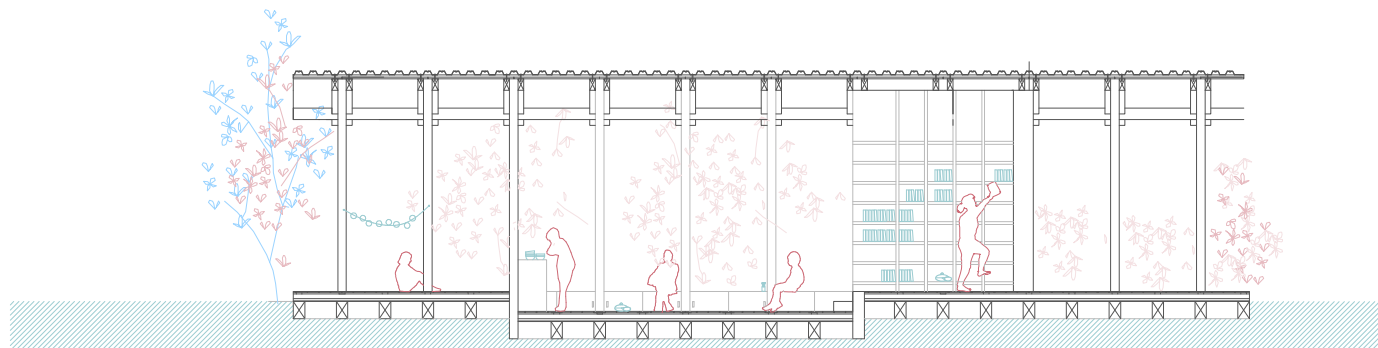
Taking advantage that Pu An city is near an industrial area, is a good idea to consider a time-efficient strategy: An aluminum plate laid on a wood structure that follows some bioclimatic references from hot humid climates in Africa/Asia. This aluminum plate will reflect the solar radiation during the day avoiding thermal inertia (instead of heating more the building in non-solar hours), as well this material will omit thermal expansion due to its low expansion coefficient.



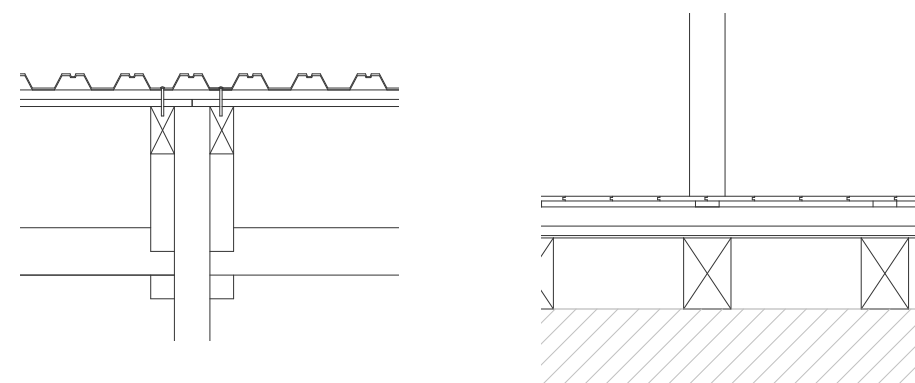
Plan



Longitudinal Section



Construction System





*This library proposes a space that gathers the children and other members of the community to interact with intimacy in nature. Creating a central space for meetings, activities, and private readings between the corridors and views or in the center that also will provide a small space for the former canteen.*

*For these conclusions, the culture of eating, sharing collective spaces, and respecting the natural conditions was very important. The solar position, a good use of materials, and cross ventilation are important elements of this proposal. As well, to consider the possibility of future extensions of little gardens or crops that can stimulate pedagogy with agriculture.*

