

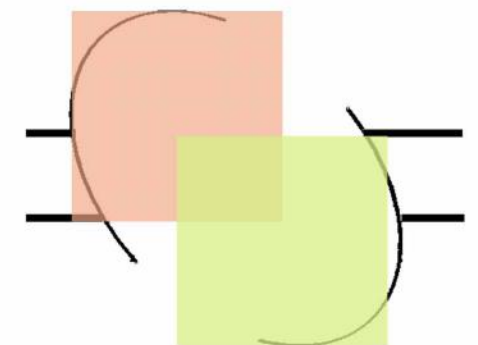
Architecture of a library could be like a wrapper of a toffee, as the modules increase inside, the wrapper is designed to accommodate the extra one. Similarly, a school library can be housed under an enclosure which is a temporary one which has a capability of accommodating the future addition.

The background of Bouyei people gives us an opportunity to build a performance library, where it manuscripts the staged folk arts.

The past is well communicated through enacted stories than writ-

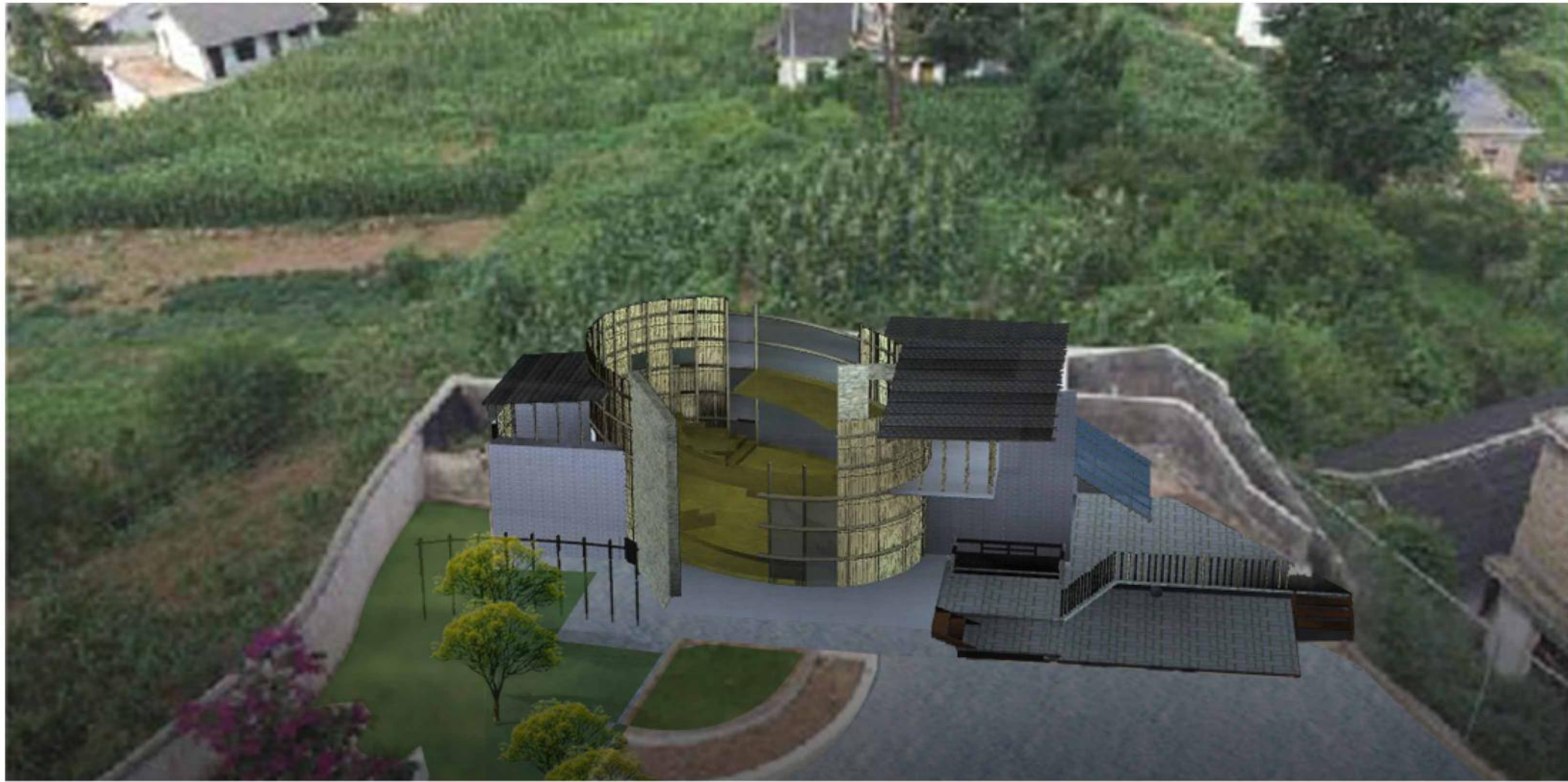


two different functions



open and temporary form





The twiddle project