



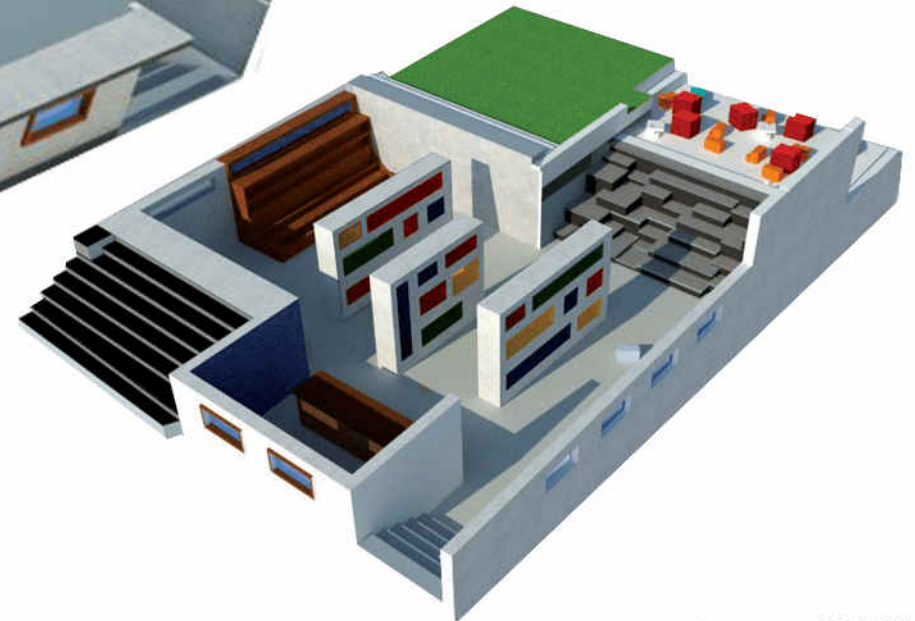
The Bouyi tribe of South China- the preservers of tradition and appreciators of wisdom.

Rearers of riddles and patrons of puzzles, makers of masks and dictators of deception.

The Children of the Bouyi Tribe of South China have little taste for classrooms of simple walls and straight roofs. Isn't there craving for Puzzles, Riddles and Deception. Things worth decoding. Something to discover at the next turn. For little conquests of wit.

Woven words carry the legacy of the race of a wise and quick witted people. Words that echo in the hills and spread the knowledge of the World around. The library and the canteen, places of collecting lessons, from the past and about those of co existence and conversation, must keep generating new experiences to imbibe in each the age old traditions. Hide and deceive to eventually reveal and reward.

For the above to continue, we believe, the essence of self learning and imbibing of one's heritage must be provided for by the built surrounding. Especially, in spaces like the library and cafeteria where one is master of their own choice. Through our design, we not only wish to provide a space for a library and canteen, but a space of familiarity of past, discovery of present and imagination for the future.



# MASKED REALITY

team 3718

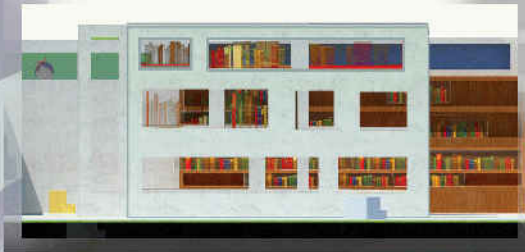
*No problem has a single solution,  
No riddle has a single answer,  
No destination has a single path*



The green cover calm and inspire. The possibilities of activities on grass are endless. The levels help segregate spaces without being too restrictive



A playful and versatile flight of stairs leading to the informal reading area. The stairs also act as sitting and interaction space.



The perforated wall shelves help maintain visual connectivity and the deceptive play of empty and filled shelves.



The valley view has been preserved. The canteen complex, in its make, merges with the traditional nature of the valley and the existing built structure through its material and make.



The library is seen as an extended plinth, creating an illusion and preserving the value view



A low ceiling height of two meters responds to the anthropometric need of primary school children. The skylights allow natural light for reading without causing glare.



The falling shelf along the wall with the skylight



Craftily arranged shelves create the illusion of a staircase and reveal itself as a playful storage



Flexible and colourful seating modules made of smaller blocks, that can be easily rearranged, promoting creativity. The spaces smoothly transition from formal to semi formal to informal.