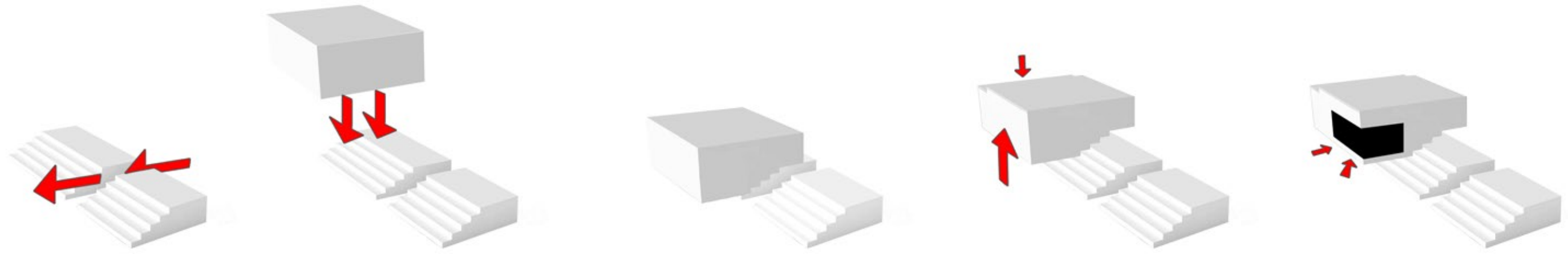


# STAIR CASE

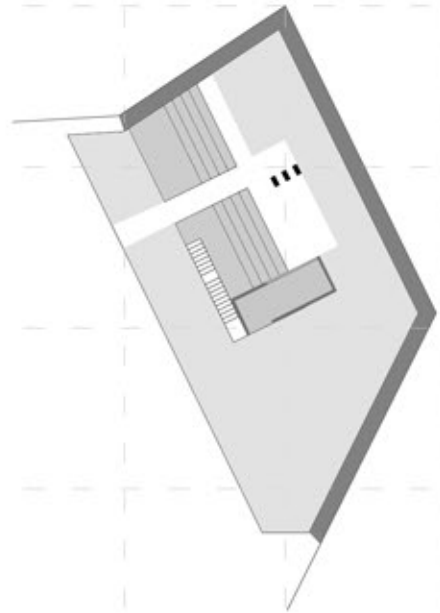
The stair“case” allows you to -

- Sit
- Stand
- Walk
- + Eat
- + Study

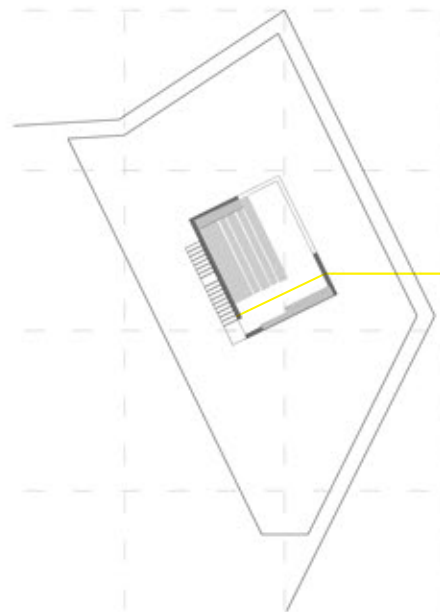




Ground floor plan



First floor plan



Skylight



To eliminate the need of furniture, an amphitheatre has been introduced to the kitchen block. It is a platform for eating, interacting and knowing the culture as well. The library block above the canteen area is connected through a staircase holding a huge bamboo railing, which with support is also providing translucency to the canteen area. Space inside library is designed to project outwards, towards the fields and the wall. Its narrow at the door and starts getting broad with every step, hence directing the vision outwards. The boundary wall has an artwork painted over it to educate children about cultural values and resources.

