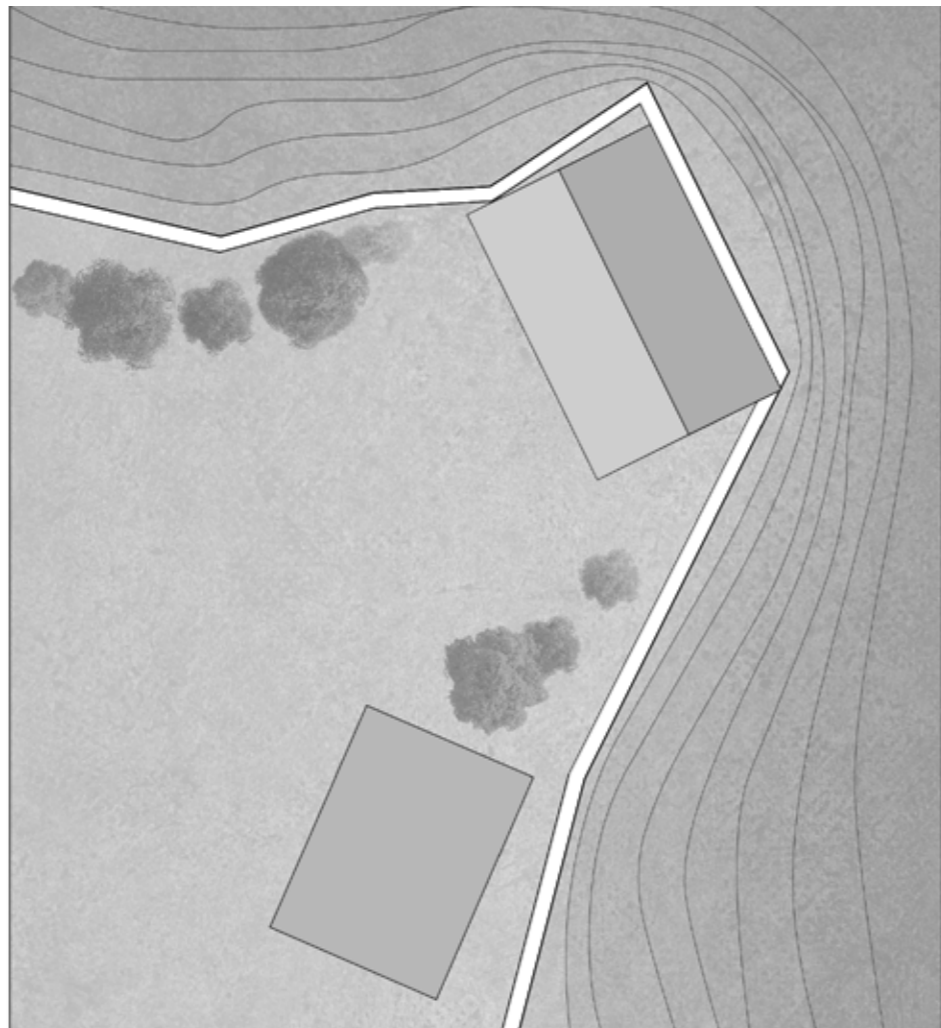
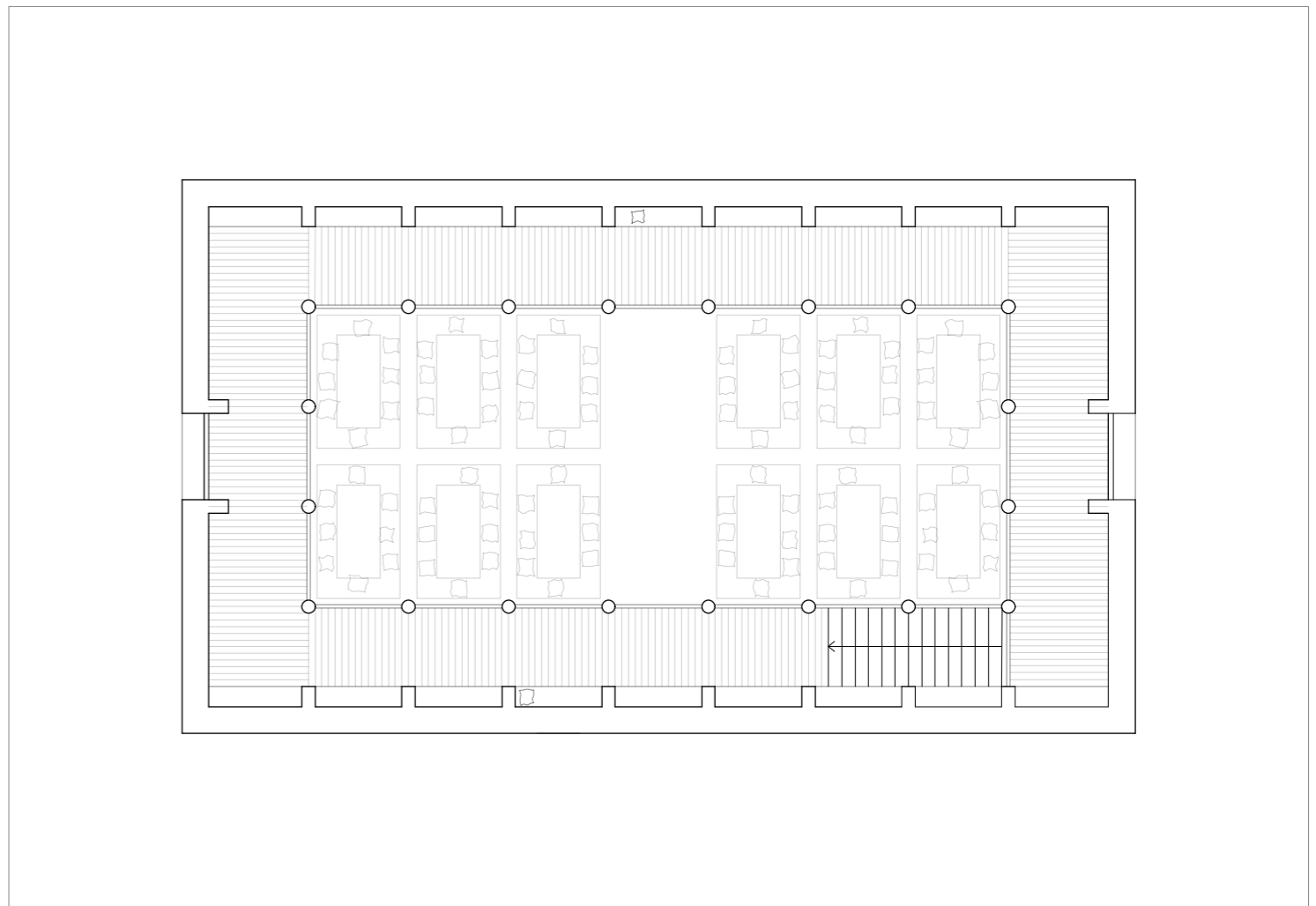


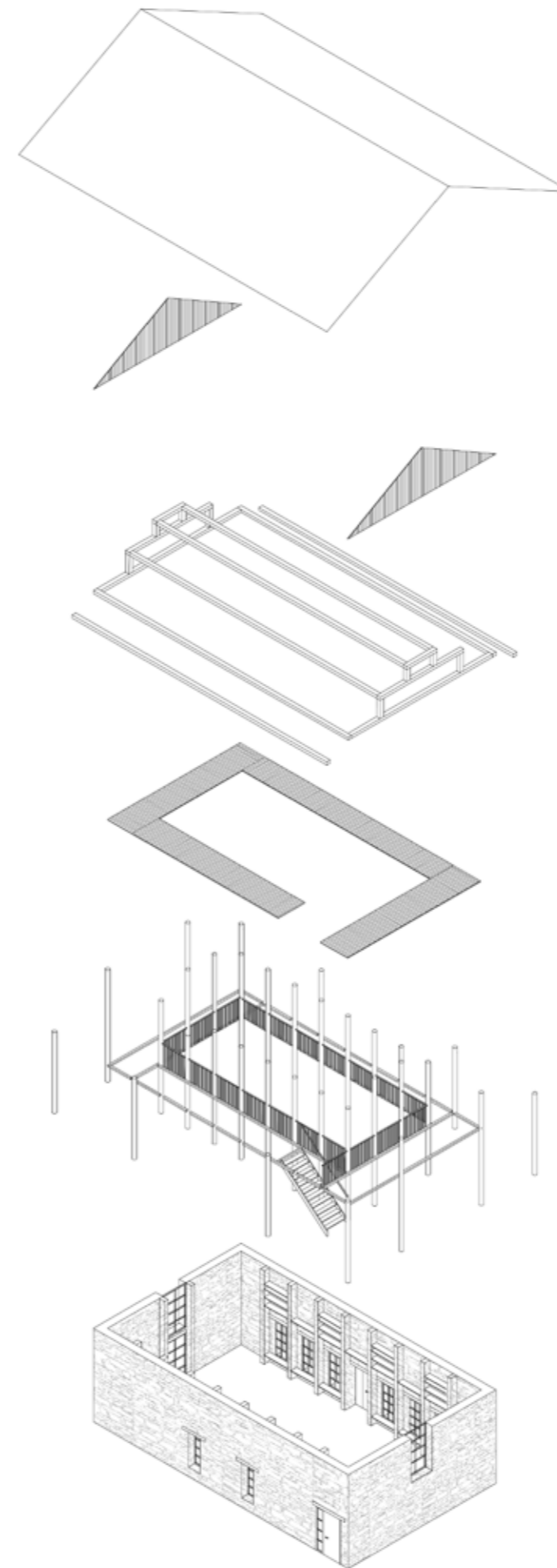
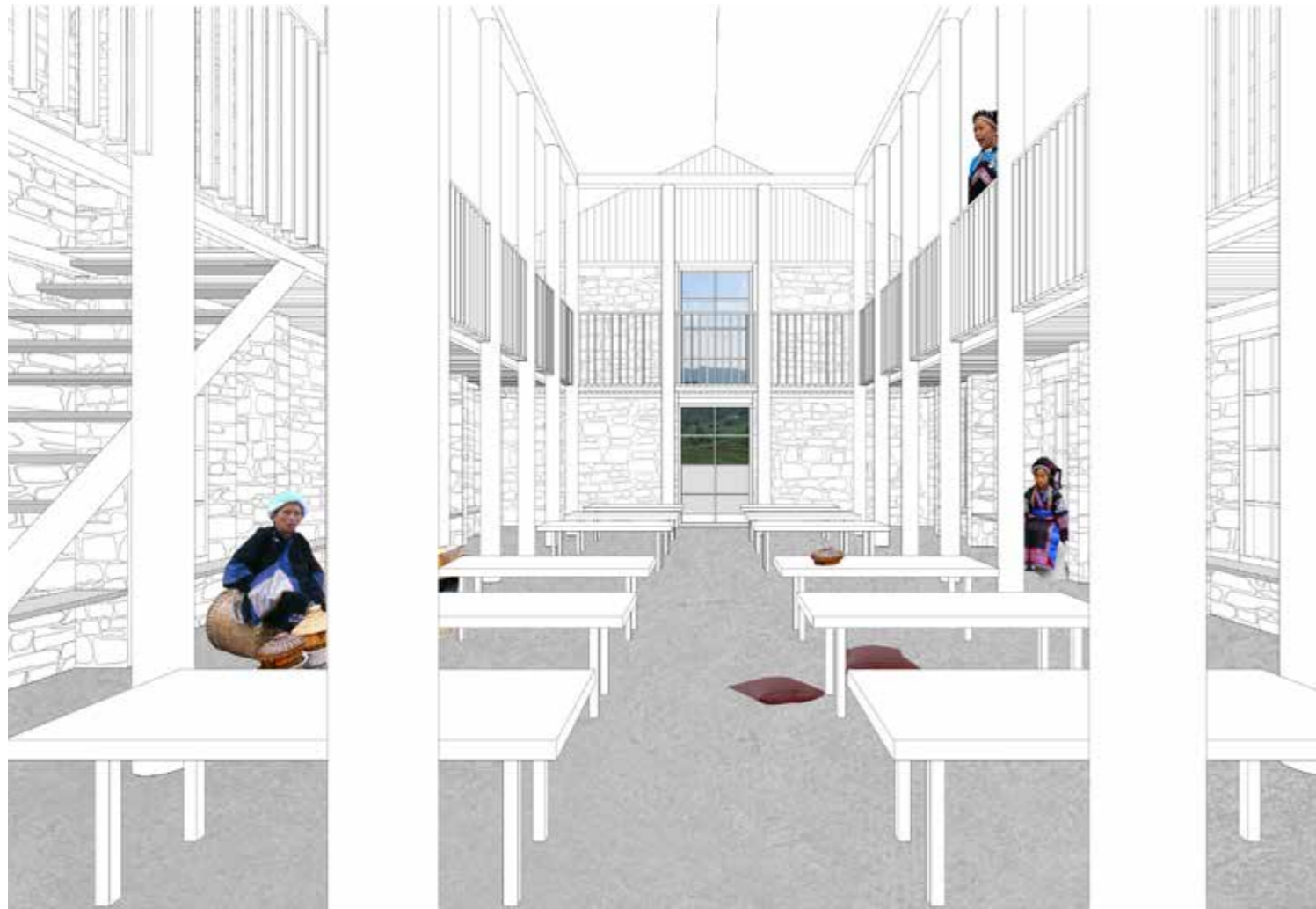
○ GROUND FLOOR M 1:100



SITEPLAN M 1:500



FIRST FLOOR M 1:100



For the canteen of the LiangMeng Primary school we propose a building that consist of local materials and shapes. The four outside walls made out of rough stone provide shelter and serve as sturdy frame for the functions of the building. All parts that are needed for the canteen and library are inserted as a wood structure.

The ground floor serves as the canteen and kitchen. After entering the building the pupils find a large stone sink where they can wash their hands. Rather than supplying a full kitchen we propose an area where food is prepared and served in local tradition from large plates and baskets. In the center there are low tables and pillows where the food can be eaten. After eating the school kids can go to the upper floor where the library is located. The books are stored on shelves on a gallery that has a visual connection to the floor below. Students can spend their time reading books on provided benches. Having the library on a gallery makes it possible to shelter the kitchen and have a very spacious eating area.

The roofed terrace offers additional space and a great view over the surrounding valley.

Having one large room does not only follow the local tradition but also has the opportunity to serve as a flexible space for musical performances and other school activities.



SECTION M 1:100

ISOMETRIC VIEW