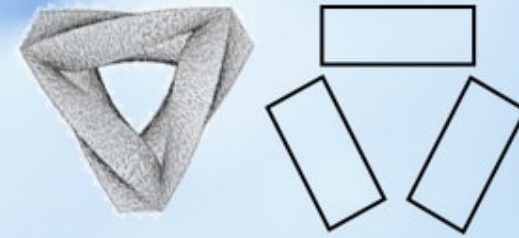
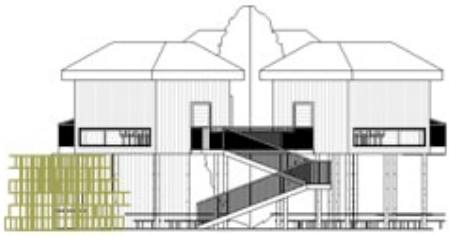


Current economic conditions are influencing people to change their lifestyles leading to diminished collective identity. Every person interacts with a space on a personal level. On interaction with a public space influenced so strongly by the buyi culture, way of living and --- religion, the children with develop a sense of pride in their identity as a part of the buyi community. Instilling this sense of community in them will lead to stronger societal bonds when he/she in integrated into the social structure. The the child acts as both a mirror and a candle.

A community thrives on 3 things: past ideals to look upto, current activites and future aspirations. The composition of spaces is such as to reflect their communal integrity





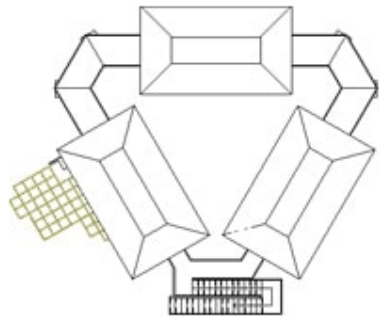


The louvers arouse curiosity in students which instills a dynamic perspective. It gives them a continuous natural and cultural connect at different levels.



On the first floor we have three 6.5mX3.5m library spaces, connected by bridges. Just below them, is the sitting area for the canteen. The cooking area is housed under the north most library block, and the bamboo mesh

Interplay of static library and dynamic canteen and fusion of both through various elements is leading to the collaborative growth of these 2 exclusive concepts. This makes the space seamless, integrating their essence while retaining their functionality.



Learning is a flow or a path we need to follow. That's why this is a continuous interconnected structure just like the process of learning.



The buyi tribe connects to nature at a very spiritual level. We wanted to very subtly give the children a chance to connect and understand their culture during the everyday routine of eating and studying by making this tree the focal point of the space

