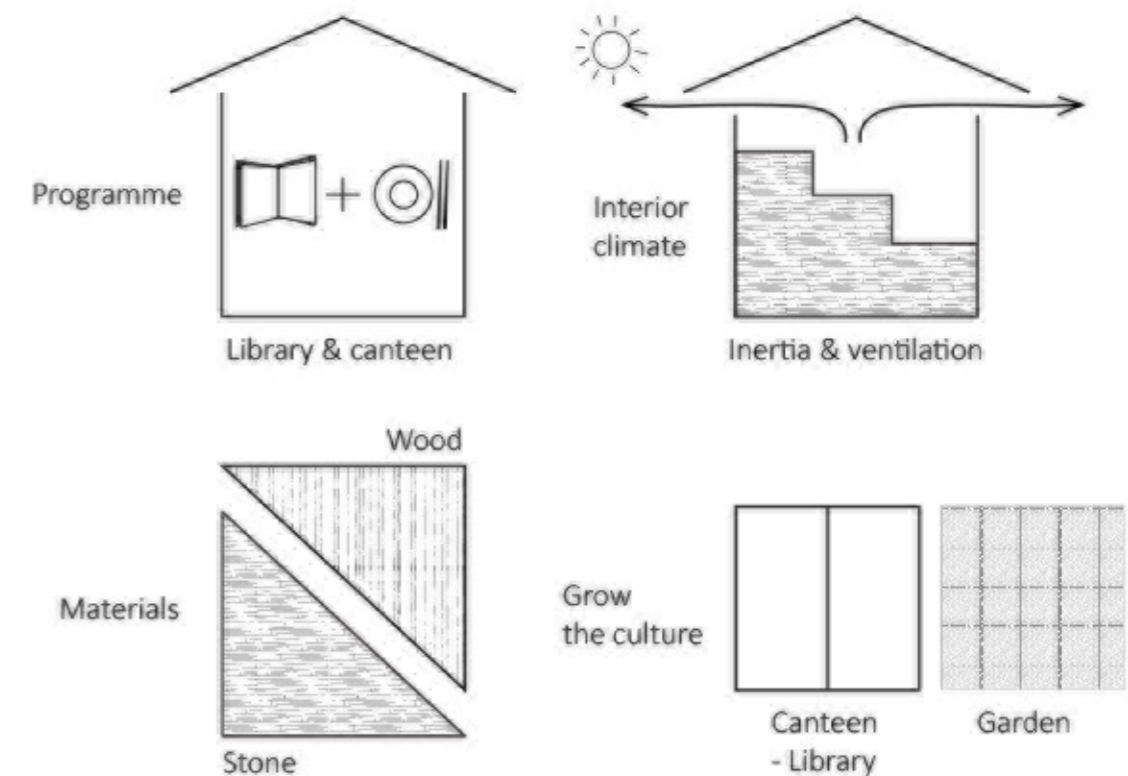
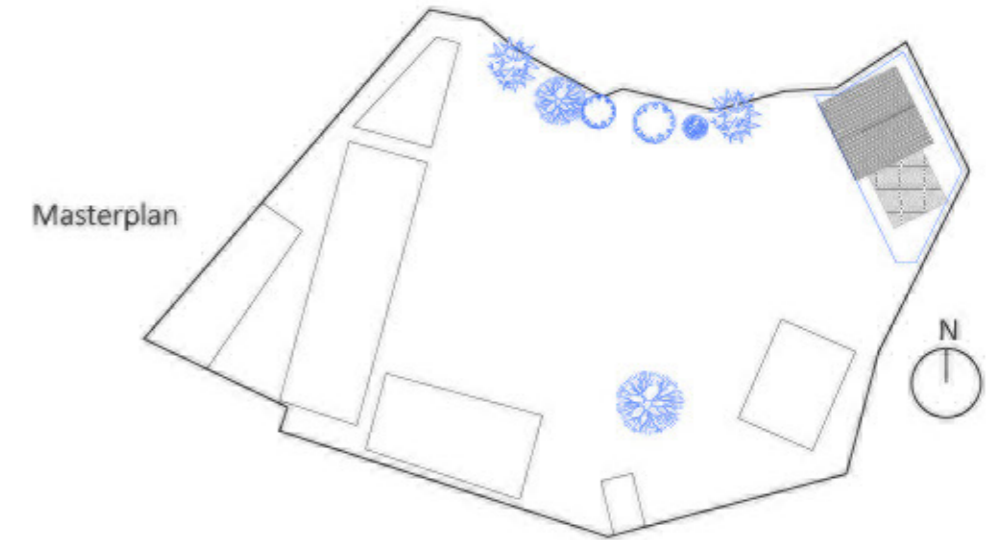
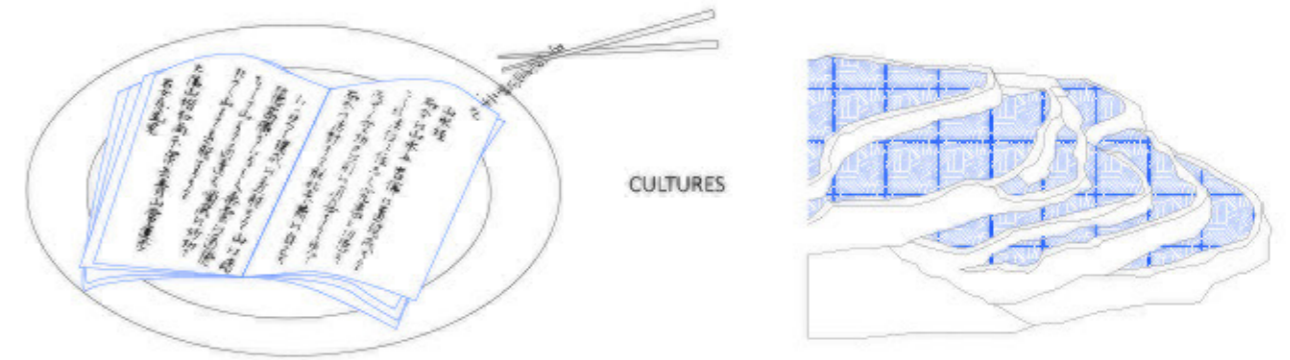


# FEED THE YOUTH

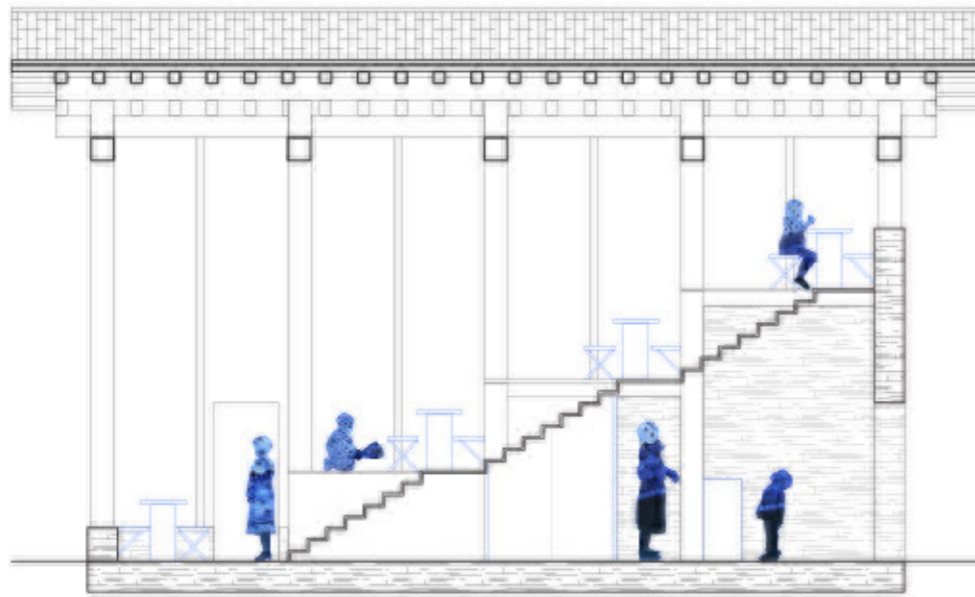
How to re-imagine the annexed spaces for education in the context of rural China?

Our idea is to take inspiration from the landscape of rice fields to shape the hybrid program it has to shelter. The building is an amphitheatre giving views towards the valley and the scenery.

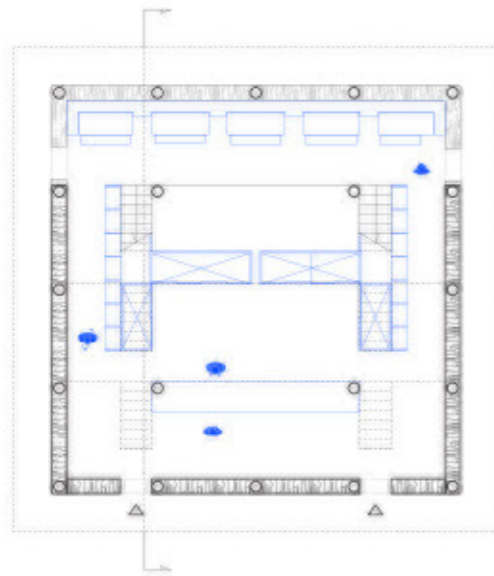
Whilst we do not usually combine a library and a canteen, there is a profound analogy between the nature of the activities of reading and eating : the process of taking in energy and knowledge in order to survive in the world. Cultivating the youth is at the same time nourishing the body and reinforcing their minds. Thus, our proposition is a unique space for both activities, open towards new and open horizons.



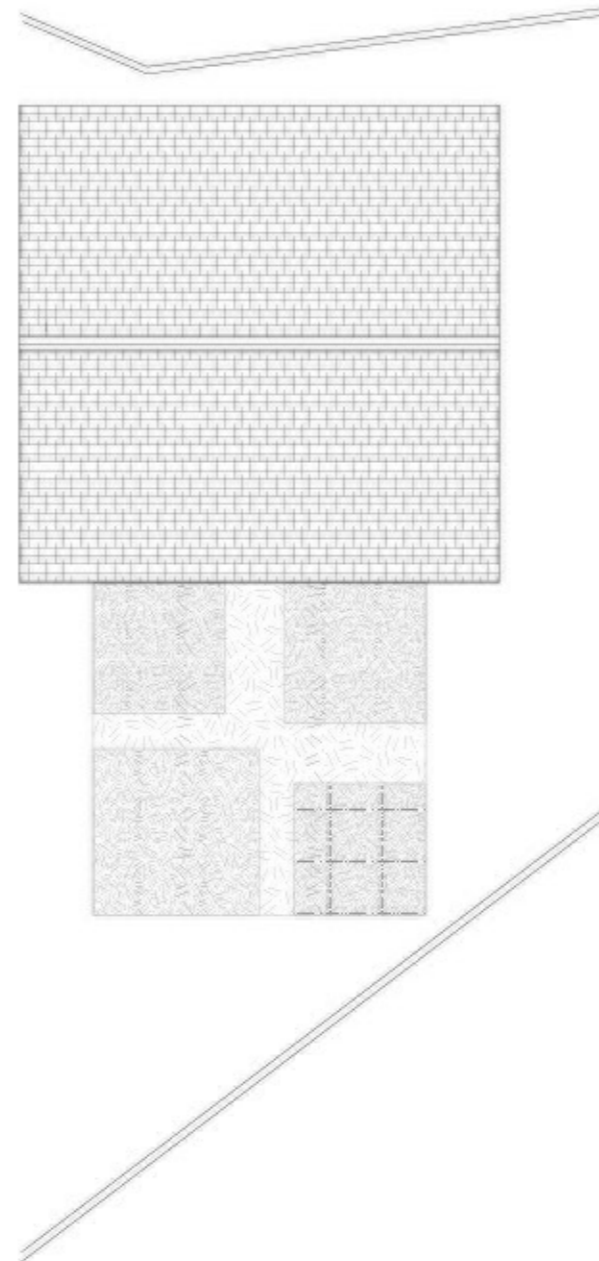
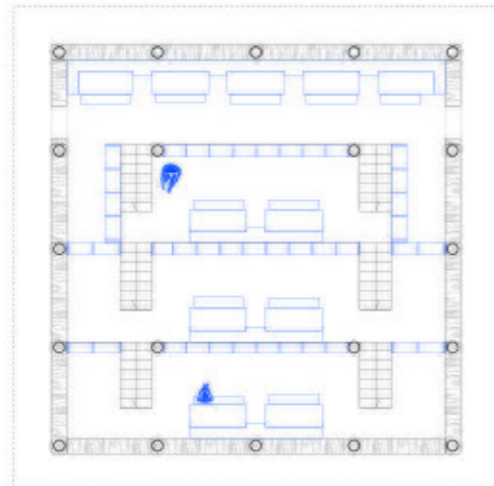
Section AA 1/100



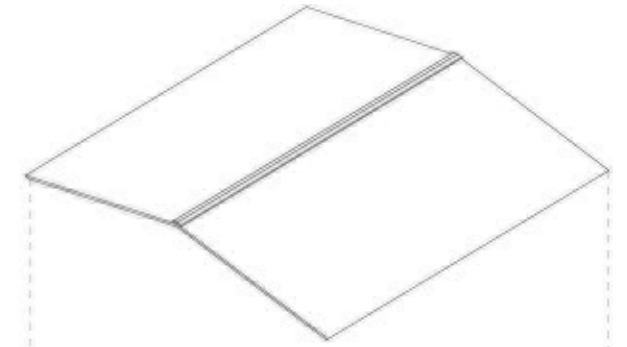
Plan R1 1/200



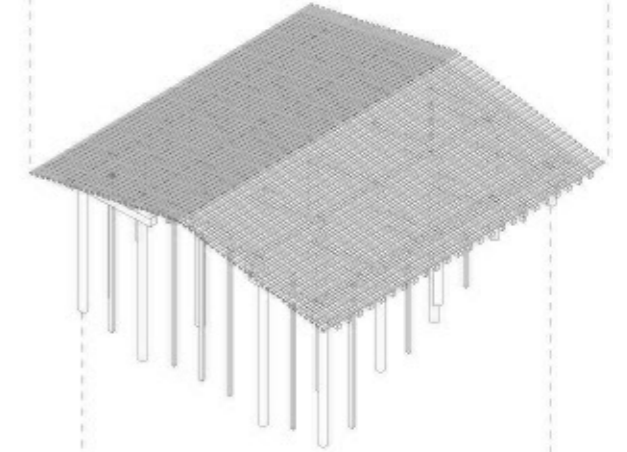
Plan R2 1/200



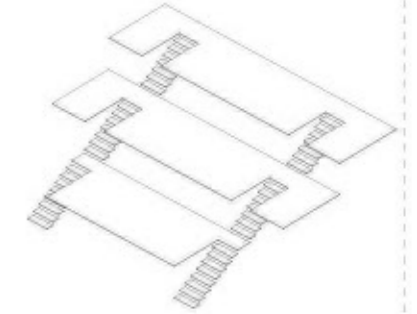
Tile roof



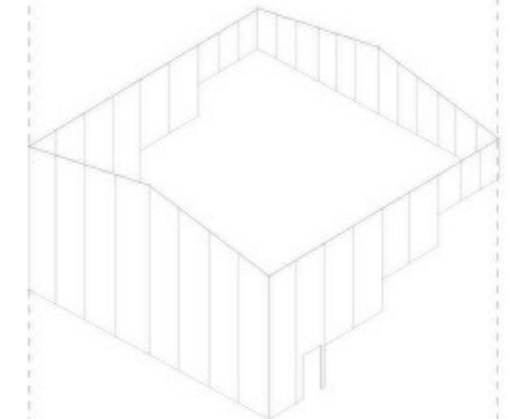
Wood roof structure and posts



Circulation and platforms



Glass facades



Stone wall base

