



## IN BETWEEN

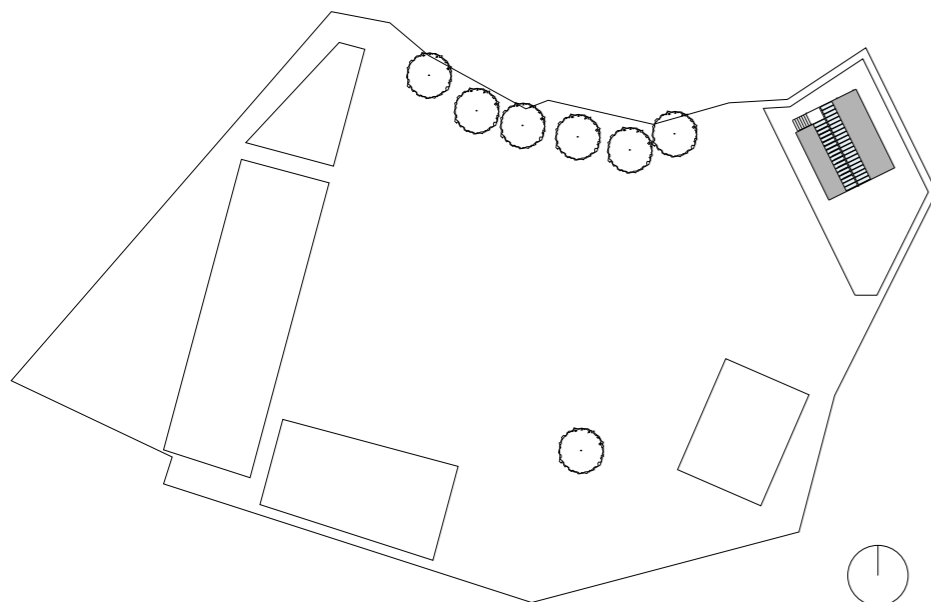
The main vision of the project is to have one building with two different functions. The library and the canteen can either be combined, or separated with both the playful bookshelf and the dividing elements attached to the main construction.

Since a library demands silence, and the canteen is often filled with noise and conversations, we have been focusing on how to create boundaries that still maintains a natural flow through the building, but makes it possible for children to read and think while others are eating.

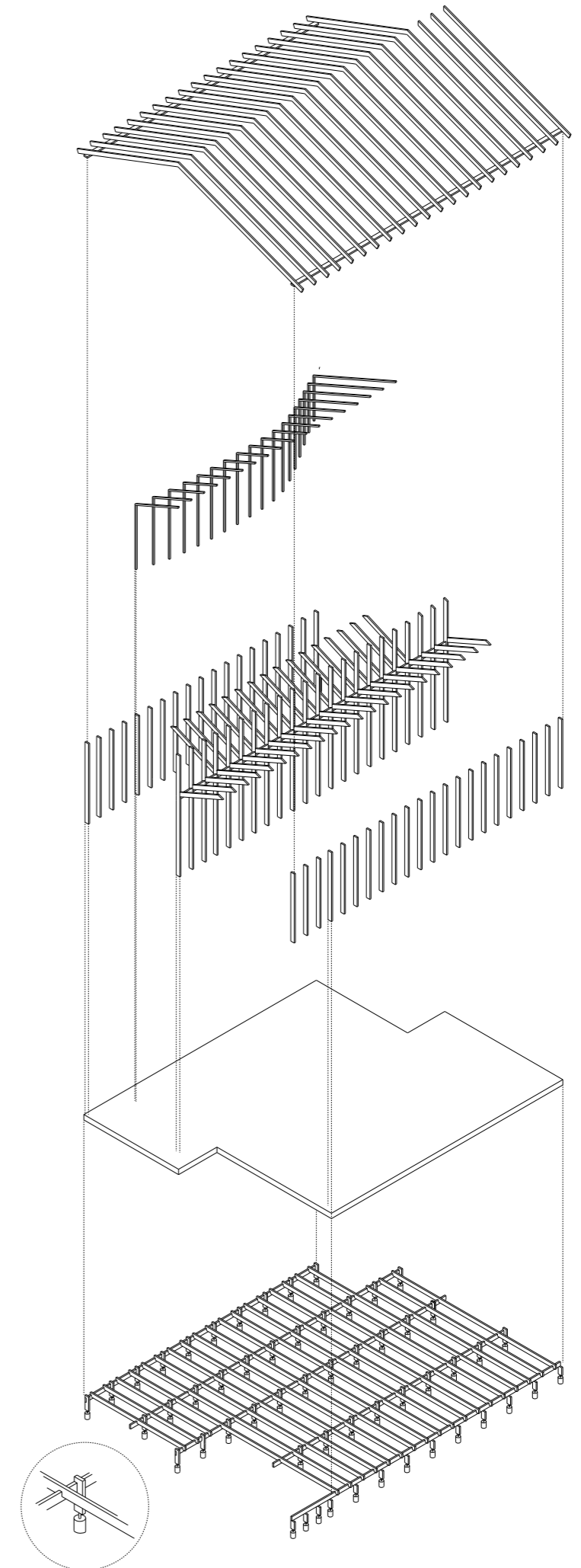
The construction is thought to be built in local wood. Windows placed in the ceiling and on the top of the walls, allow natural daylight to light up the room. Smaller windows on the front facade frame the view. The house is lifted up from the ground by a grid construction also made in wood (see axometric drawing). The grid construction is resting on poles which are standing on rocks or concrete slabs touching the earth.

The bookshelves are attached to the main construction of the house, and are creating another boundary between the function in the canteen and the silence in the library.

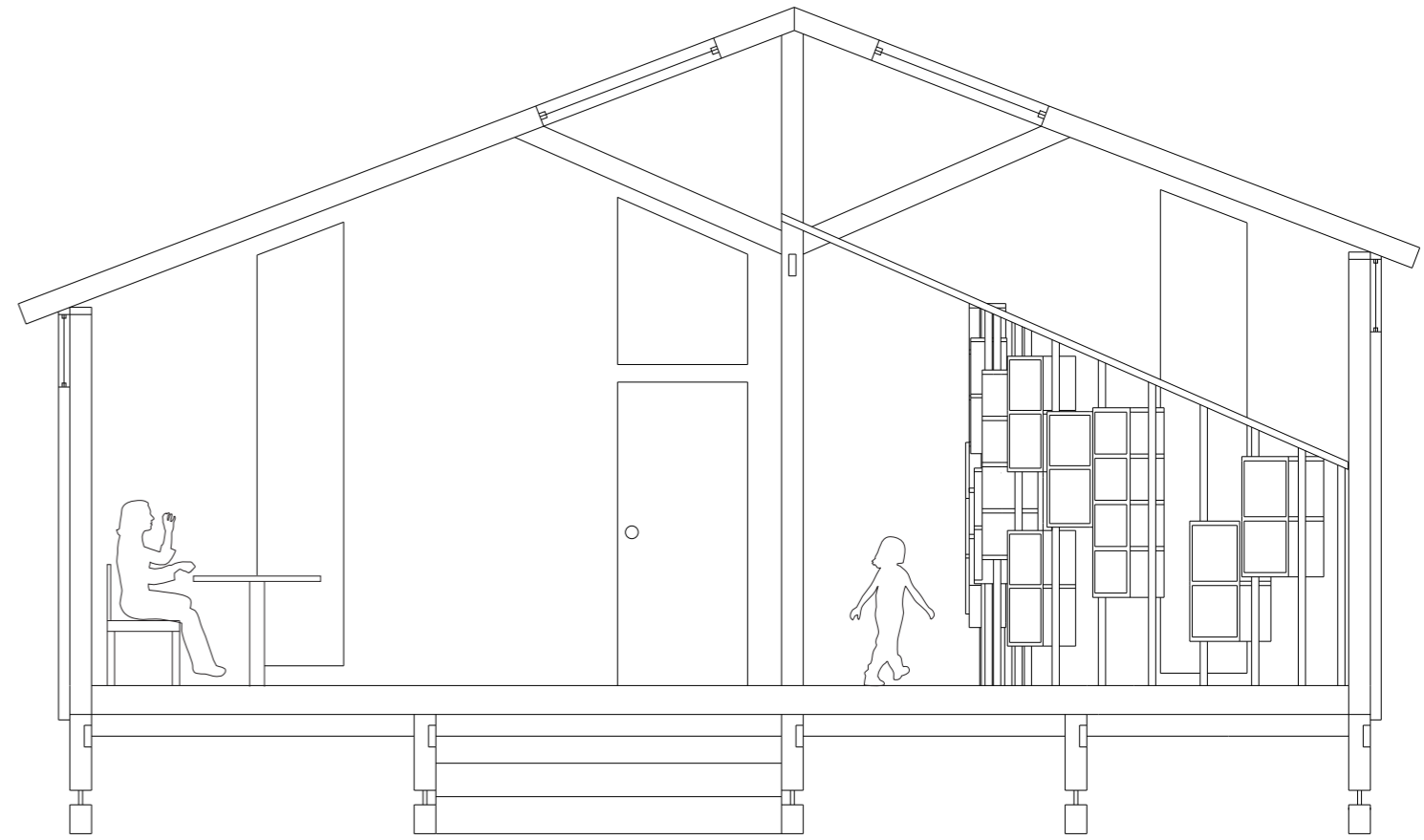
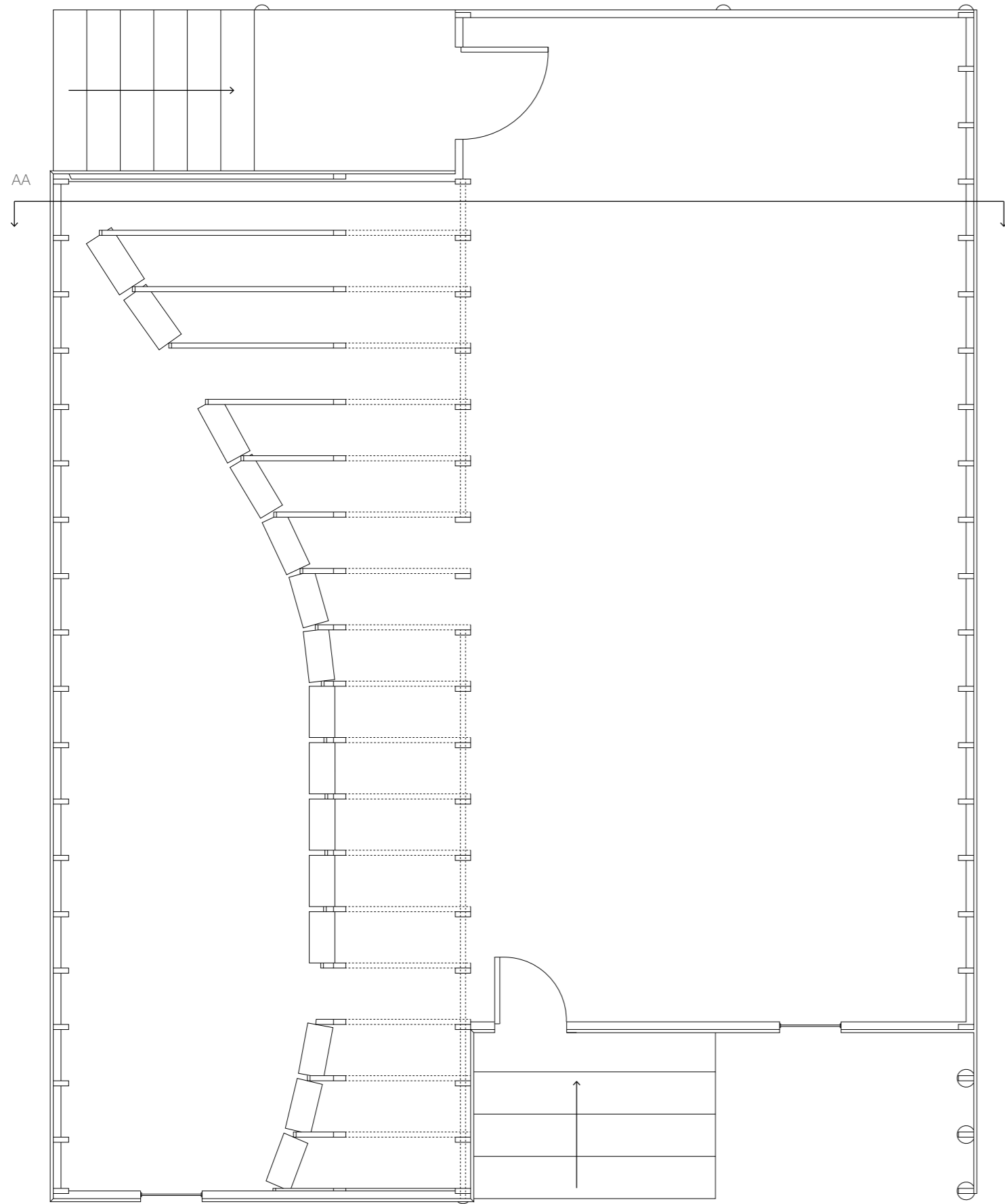
The construction is visible from the inside. To move around the house, you have to walk in between the construction itself. The bookshelves invites the children to crawl down under or walk through the openings. This creates a zone in the back of the shelf, which can be a more quiet space for the children to read.



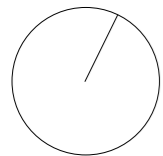
Context 1:1000



Wood construction



AA  
1:50



Total: 97m<sup>2</sup>  
Total height: 5,7 m

1:50

