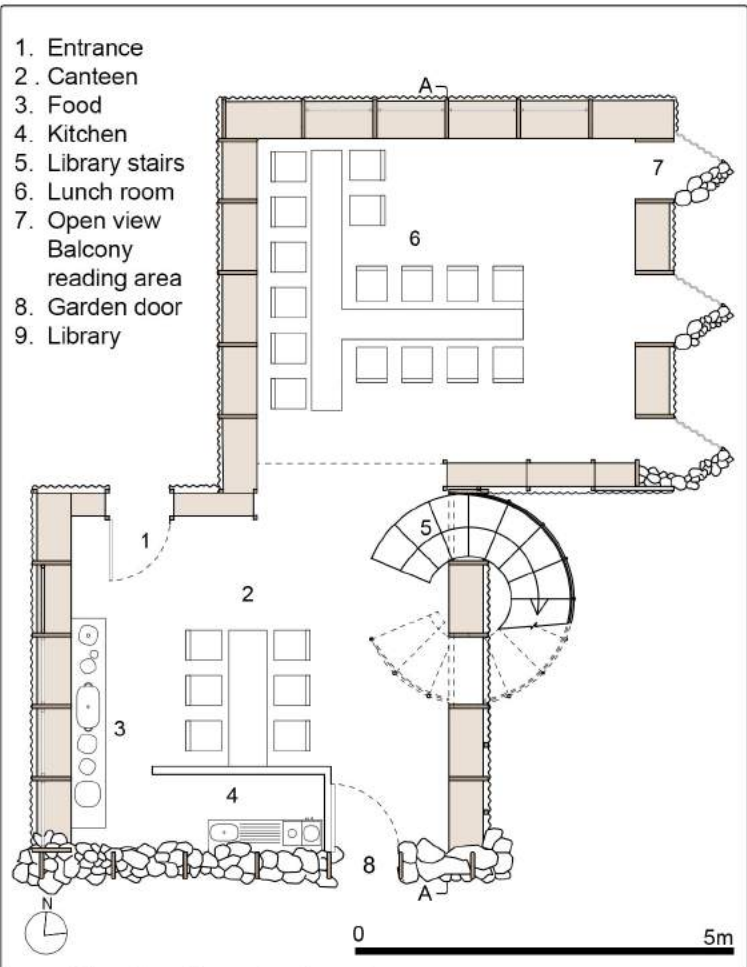


For the last 2,000 years, Bouyei people have been influenced by their own adaptable architectural style, built techniques and cultural by using a natural material such as stones, timber, and clay. The Guizhou region as an important city for human settlement.

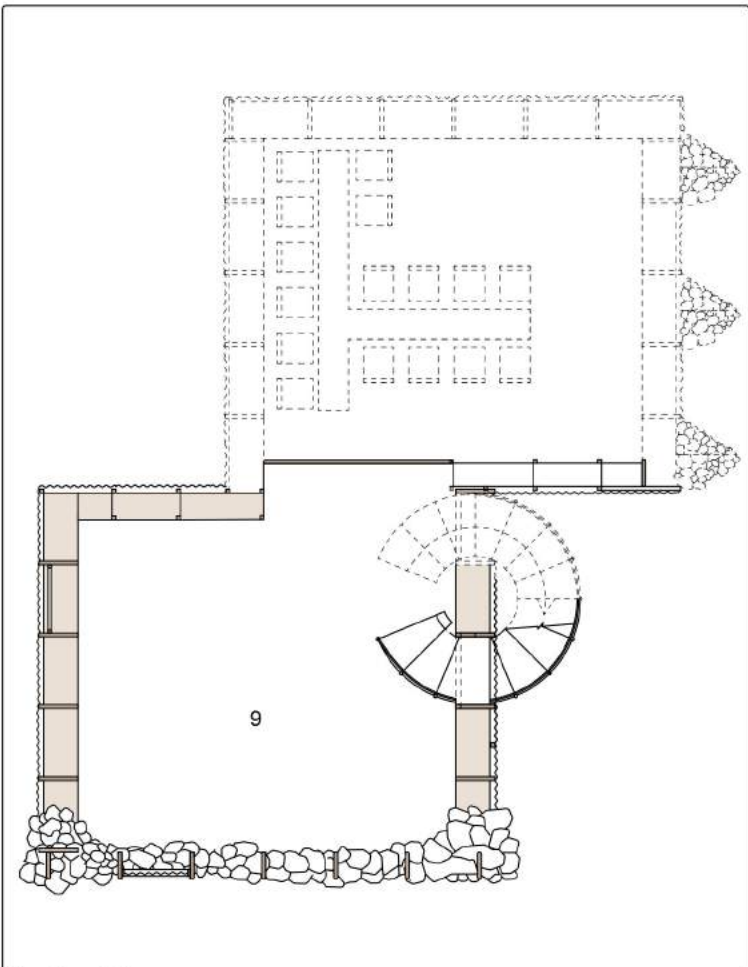
The approach of the design further enjoys and celebrates the relationship with the surround such as mountain from different levels with a green grass which gives the LiangMeng school complex a great views and the opportunity to create a space where the students can lunch in such calm place where is quiet and open an opportunity for them to read a book.

This proposal is built with 90 percent of natural material such Straw bales, timber, stones from the local soil and recycled corrugated polycarbonate. The stone walls facing south plays such important role which helps the wall with absorbing energy when is it the sun and makes the place more comfortable to be.

The focus of the proposal is utilizing the natural light from the elegant roof structure and plays different light colors throughout the natural daylight. Locating the main entrance to the East has made the students access safer and allows visitors to circulate through the building freely and enjoy open views of both the interior and the surrounding landscape.



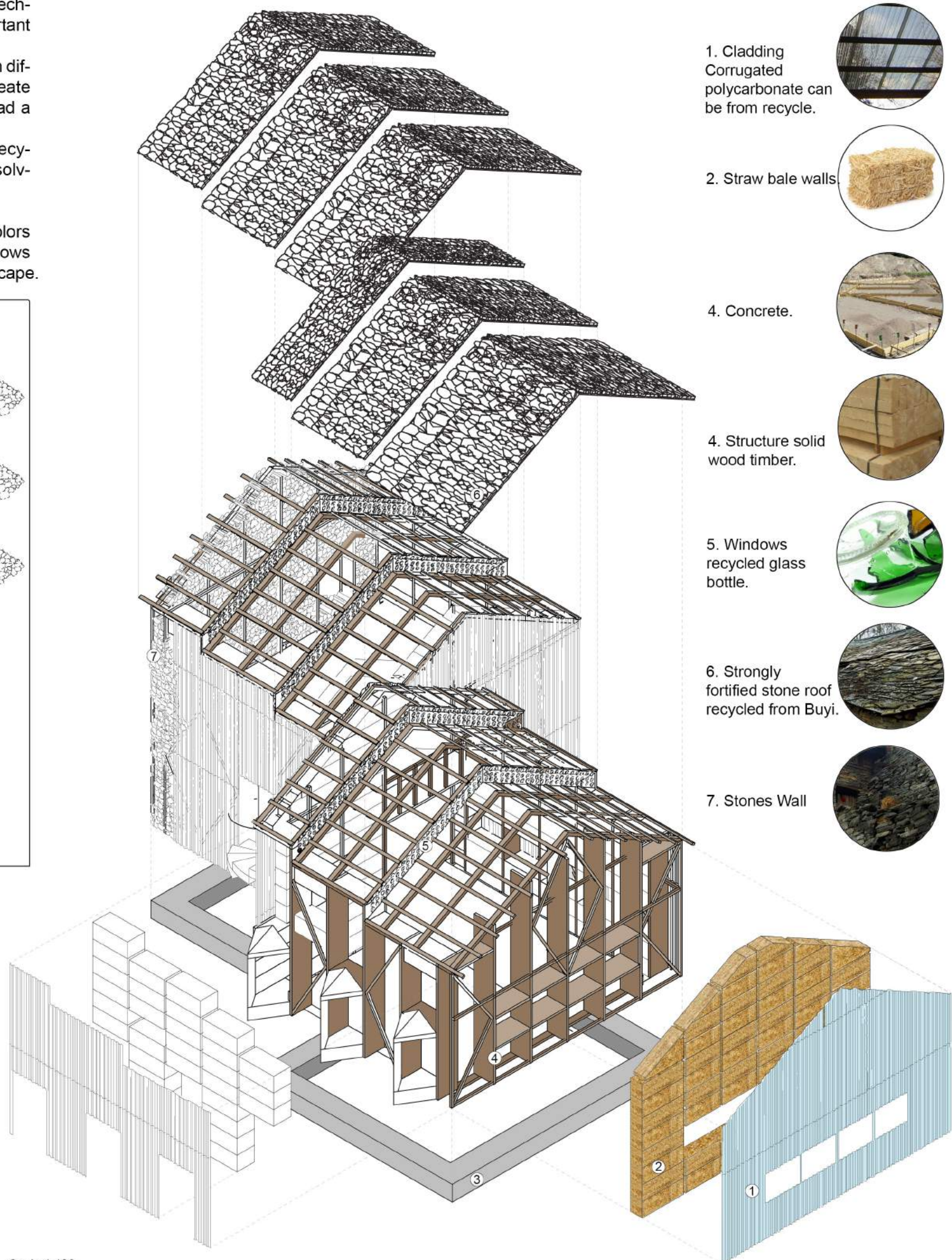
Ground Floor LiangMeng school complex Scale 1:100



First Floor Library Scale 1:100



Front view of the LiangMeng school complex Canteen and Library



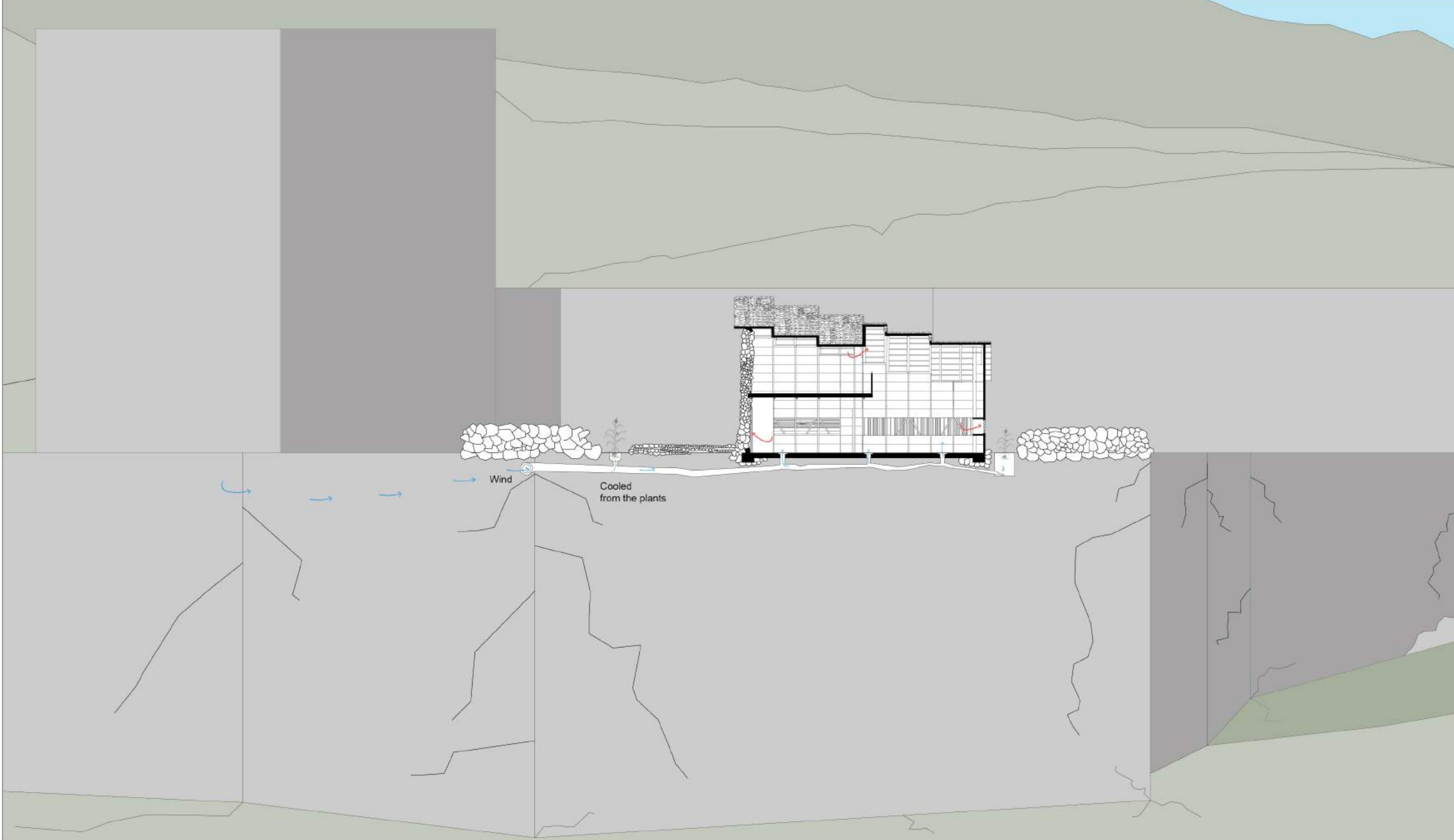
Scale 1:100 Exploded ISO showing materials



Site Location LiangMeng school complex , Puan City, Guiyang, China



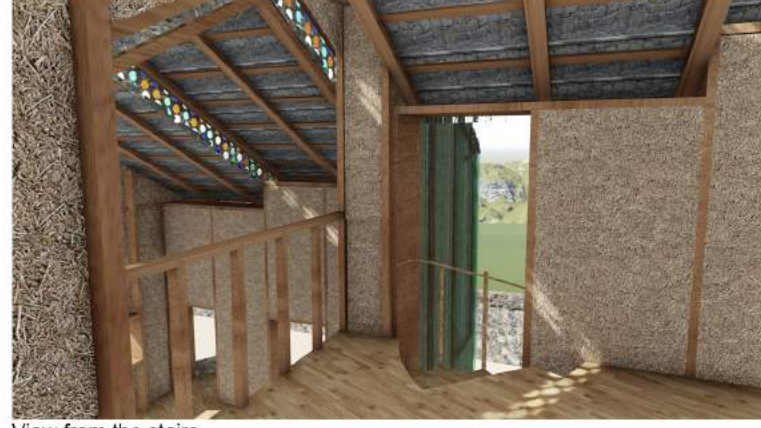
South view LiangMeng school complex



Section A-A



View from the library



View from the stairs

