

LANGUAGE TO INSPIRE

















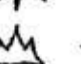



"Individuals within their community make their own culture"- Christina De Rossi, Social Anthropologist.

The word 'WAY' is process or a method that particular community which depicts their culture. Culture can be depicted through food, religion, festivals. One of these is LANGUAGE- the way of communication that makes up how a group acts & interacts

The concept has been derived by the language which they share.

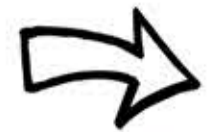
Function is viaduct and structure is channel likewise communication is a bridge of interaction and language is a conveyance.

Buyi community is derived from the Zuang Community. With time, their culture evolved but the language remained the same. Use of monographs to establish written language made a route for the natives of Buyi community to communicate. Where they derived the words from the appearance of the object.

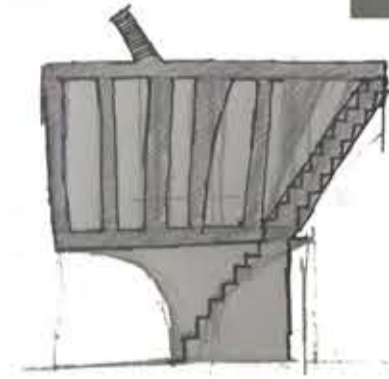
	→		→		→		→		sun
	→		→		→		→		moon
	→		→		→		→		tree
	→		→		→		→		mountain

We just inverted the process of derivation. They used graphics to derive their words. We used the words to design the building. The idea is to draw the first graphics that we imagine in the mind when we hear the word.

LIBRARY



What do we think when we hear the word Library?



OVERLAPPING

Site context

The triangular form is chosen provide the maximum views to the user. As the user belongs to the age group 3-12, It is important to design the building whose all activities are centrally focused.



Conceptual plan

Orientation of the building is towards north. The roof is tilted towards south to reduce the direct heat gain.

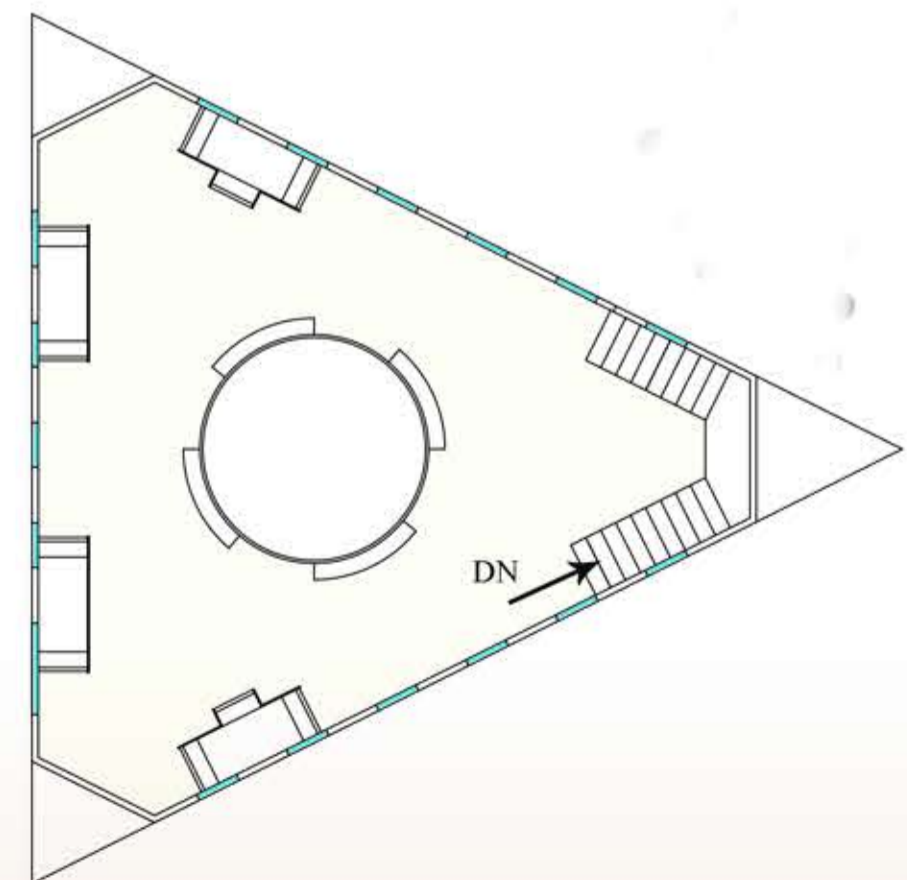
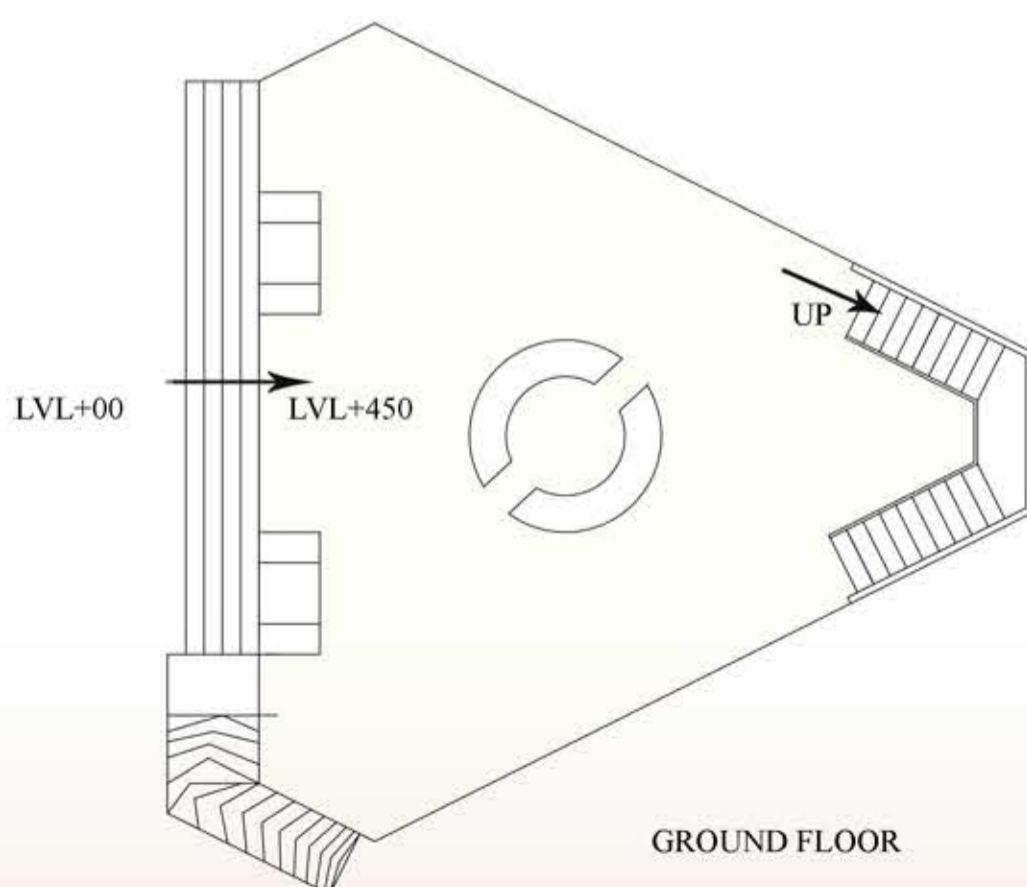
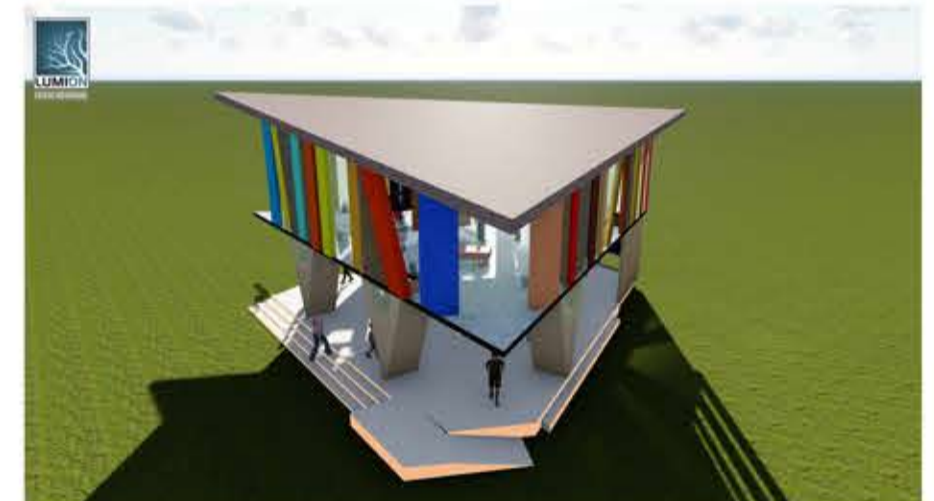
Stilt planning is preferred to allow the air to flow, But it has function as well of canteen

Material Used:

Roof is covered with local tiles and walls are constructed with bricks. The windows are designed with the use of bamboo and glass. The plastering on the walls is mud plaster to keep the the building cool.



TEAM 5210



TEAM 5210