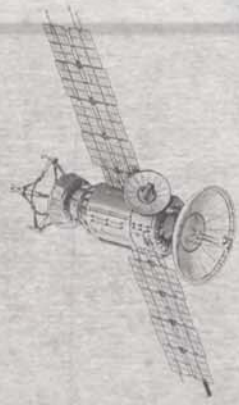
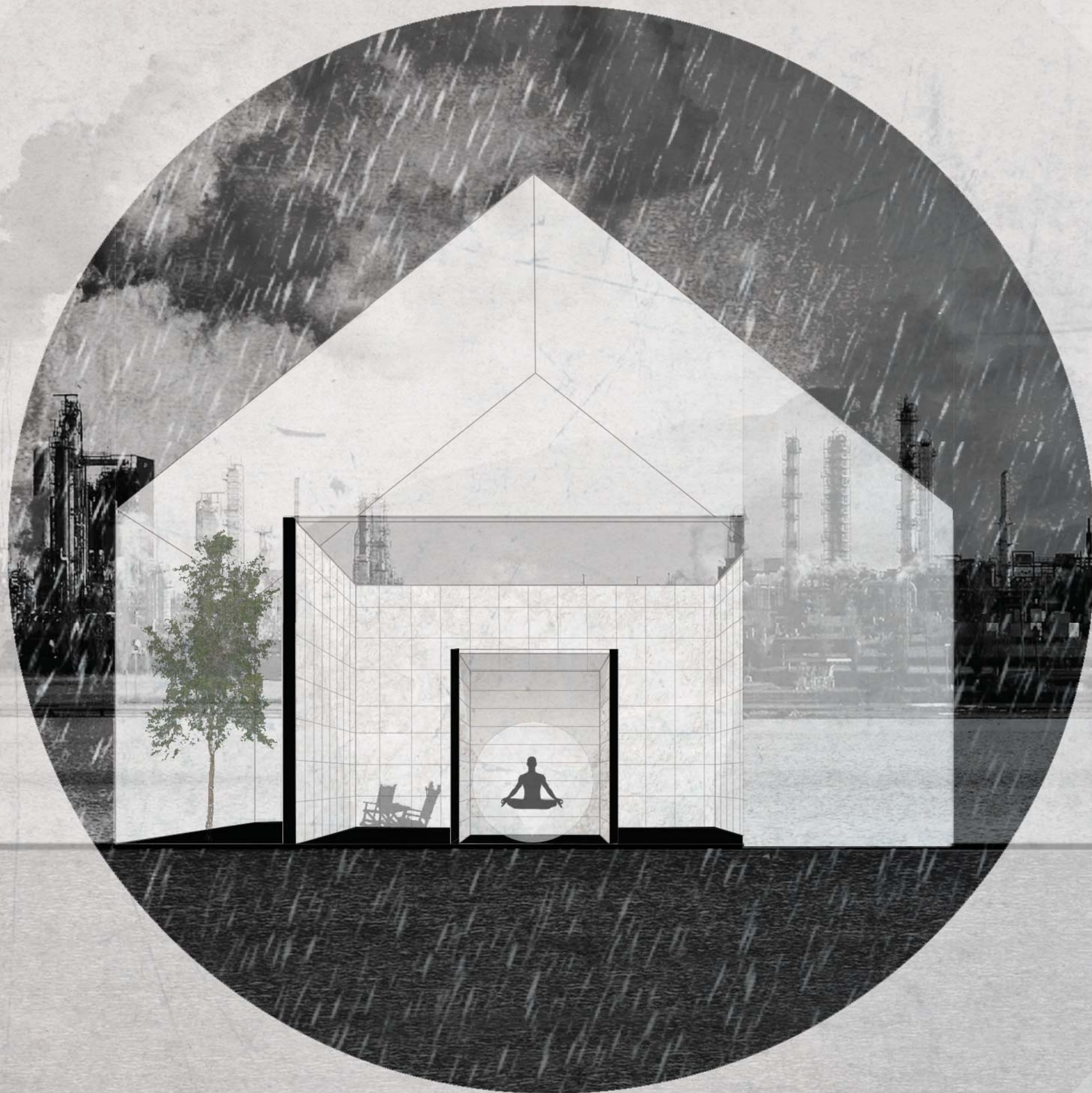


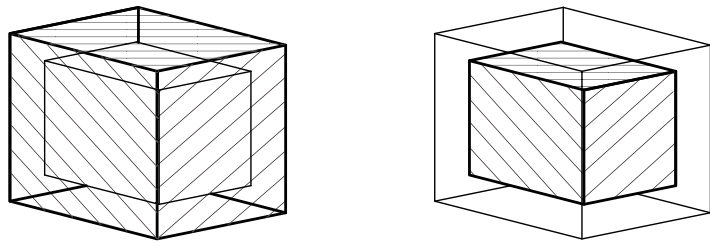
# TEMPLE

The house in its essence offers shelter and protection from the outer world. It is an intimate space, where the one person can find peace and comfort. It forms a threshold that allows only the closest to enter. In this line of thought, the house is a personal temple - each individual has its own and unique sacred space, that they call home.

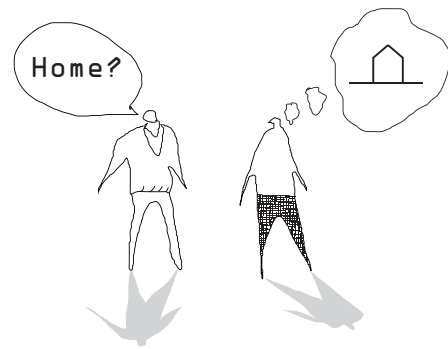
We use the basic image of a house to materialize this idea - a silhouette with walls and roof-. The fundamental elements of architecture are space and tectonics. In our vision, they are inverted space forms the boundary of the house and not the other way around.

The mirror surface symbolizes boundary and encloses a space. It absorbs its surroundings and reflects them back, making the house invisible, but tangible. The envelope in this form creates a boundary between the personal temple and the outside world.

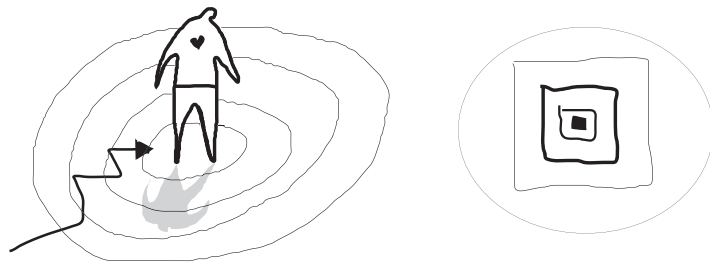




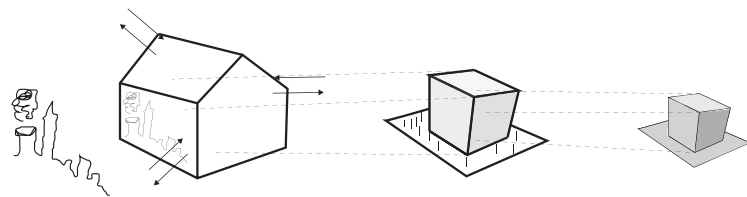
INSIDE OUT: the tectonic relation with the space is inversed, the space forms the solid.



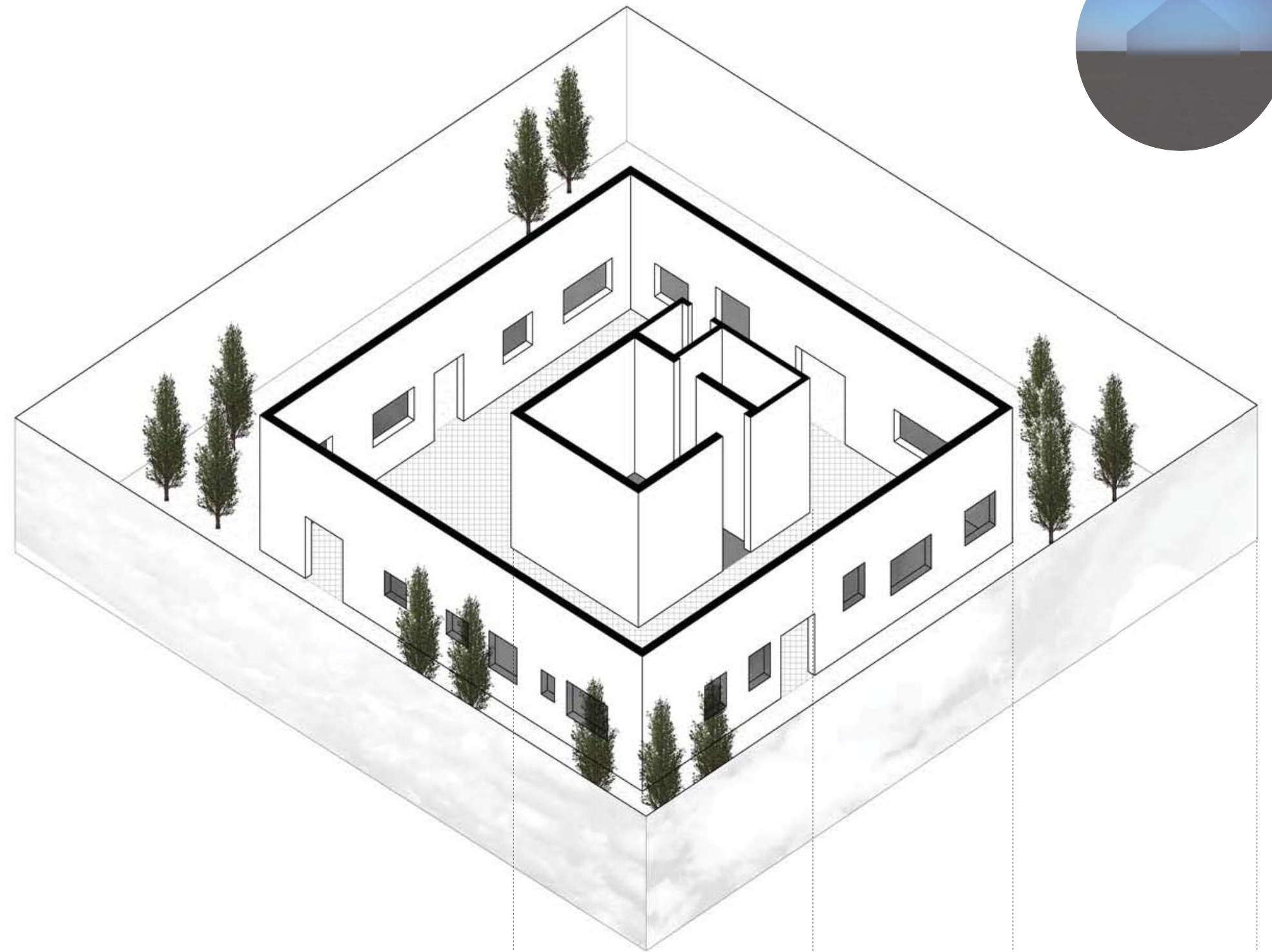
THE BASIC IMAGE of "home" is the selected typology.



THRESHOLDS mark the transition from a public space to a more intimate space. The house is a material manifestation of the personal spatial requirements of humans.



The exterior boundary is a mirror surface that reflects the surroundings. It creates a PROTECTION of the inner personal space against the outer world.



Intimate (sacred) space

Personal space

Social (Interactive) Space

Public space

