

PRISON



Two volumes are connected by two spiral staircases and one corridor. One is almost entirely sealed, while the other opens up towards a garden.

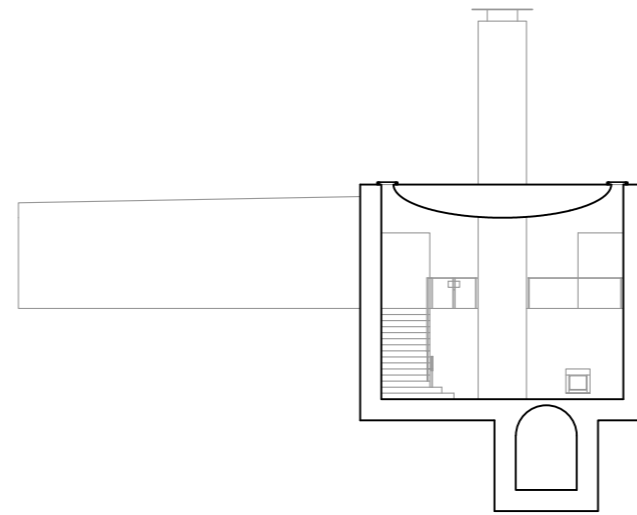
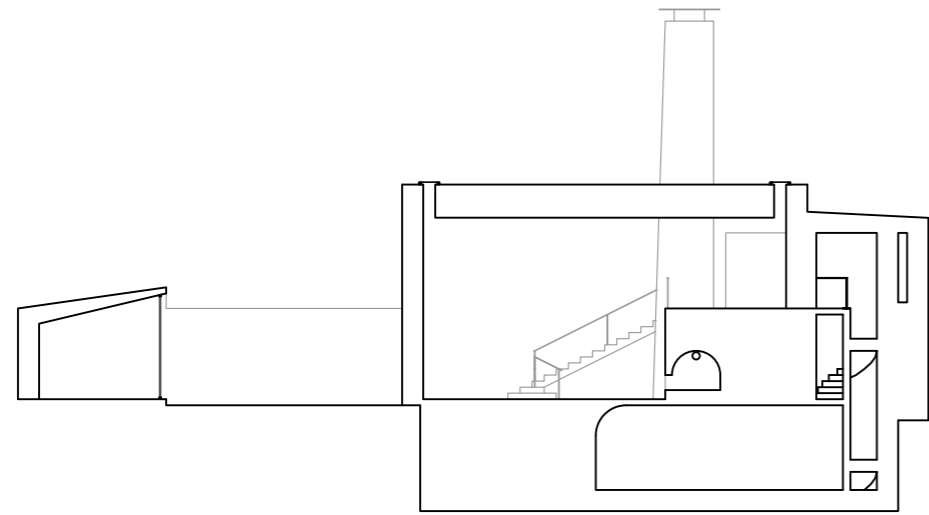
The roof is carried by the chimney, which is a monolithic piece of black marble. This allows daylight to enter the room continually along the top of the walls, as well as it gives the impression that the roof is floating in the air.

The reversed vault is constructive. It also makes for different degrees of intimacy, as well as it spreads the light softly across the room.

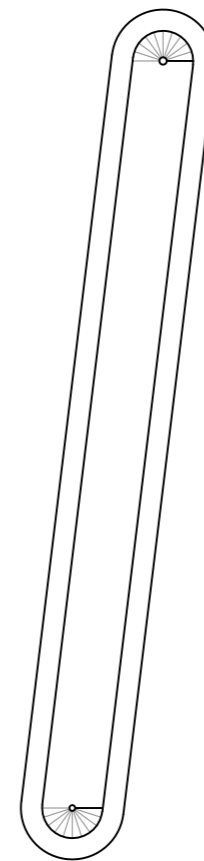
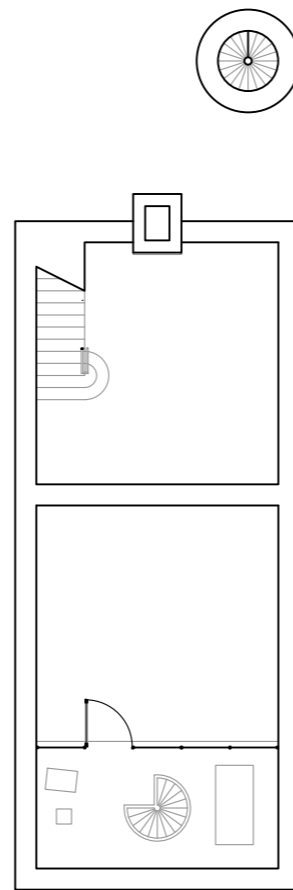
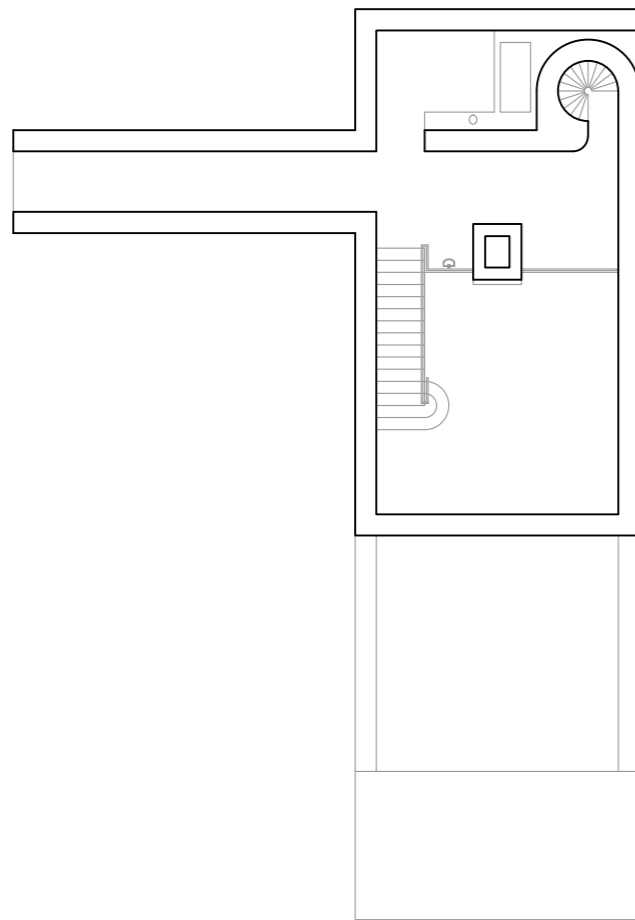
Terrazzo is used on all the floors to create different atmospheres according to the spatial qualities given by the construction. The colours and materials complement each other. The concrete walls are anonymous compared to the expressive stone materials and are essential to the balance of it all. To ensure a well-proportioned structure all numbers are related to a common number, eight, and consequently followed, although some exceptions have been made.

Since the context is non-existent, the House can be compared to a prison.

TEAM 2154



1 : 200



TEAM 2154