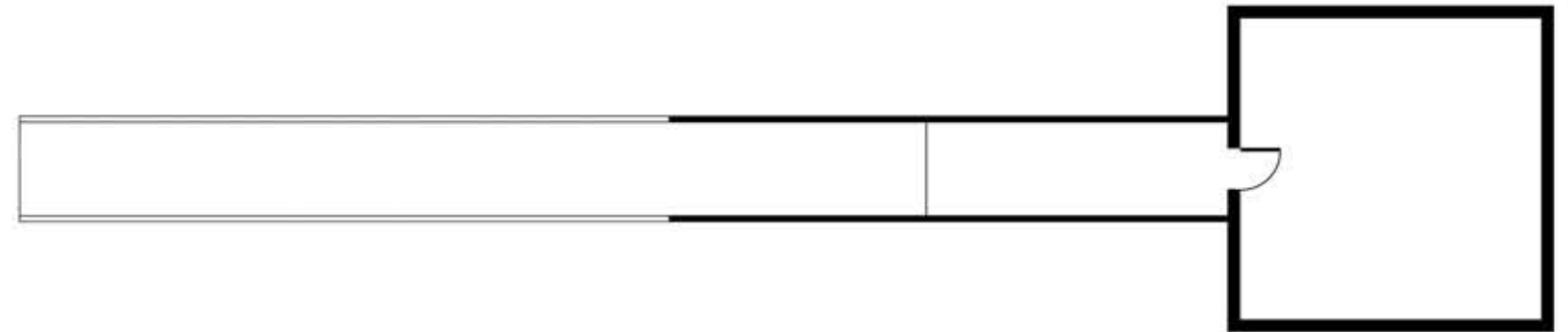


# THE REFLECTIONS

A house is an engaging personal space, where memories can be shaped and built form can transcend the senses. Modernist architecture says form follows function. To make functionless places, we go formless. In today's chaos, the human aspect of architecture is somewhat lost and entropy reigns supreme. Man has lost himself to the material world and is denuded of peace and self-exploration. To reverse this, the design focuses on formlessness through endlessness achieved by placing mirrors on four sides. Entering the house devoid of pandemonium creates a harmony between the place and the person. This arrangement elevates the soul, giving it freedom and a chance to understand its existence. The underground house, not tied down to any site, is veiled from the anarchic world. A person, searching for his heaven, transcends from chaos to order through the dark tunnel, seeing a light at the end. Reaching his abode, all he sees are his own infinite reflections, all concentrating on one point- him.



PLAN



SECTION IN A FLAT SITE



SECTION IN A SLOPED SITE