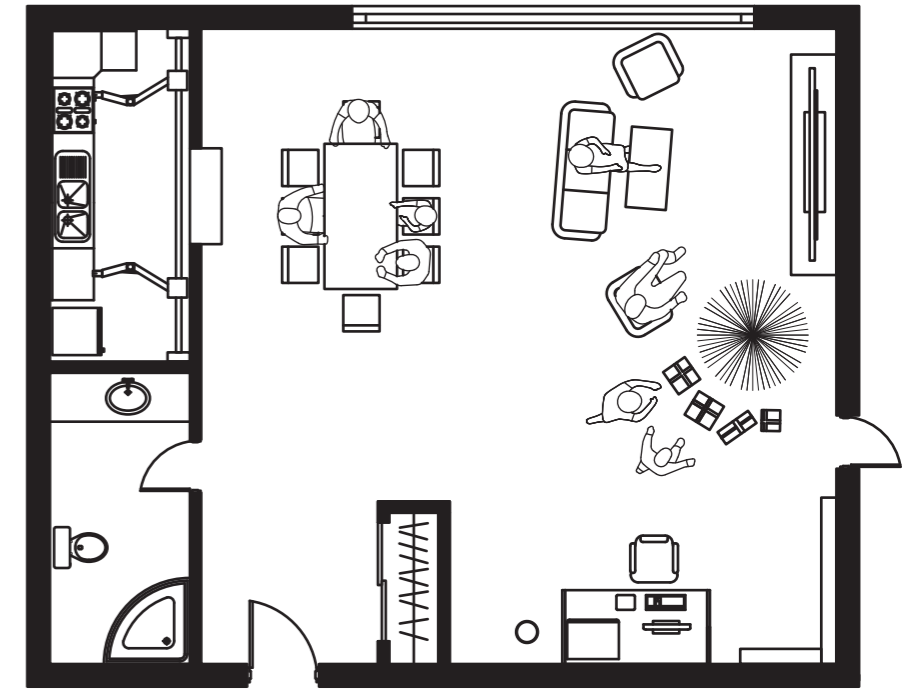
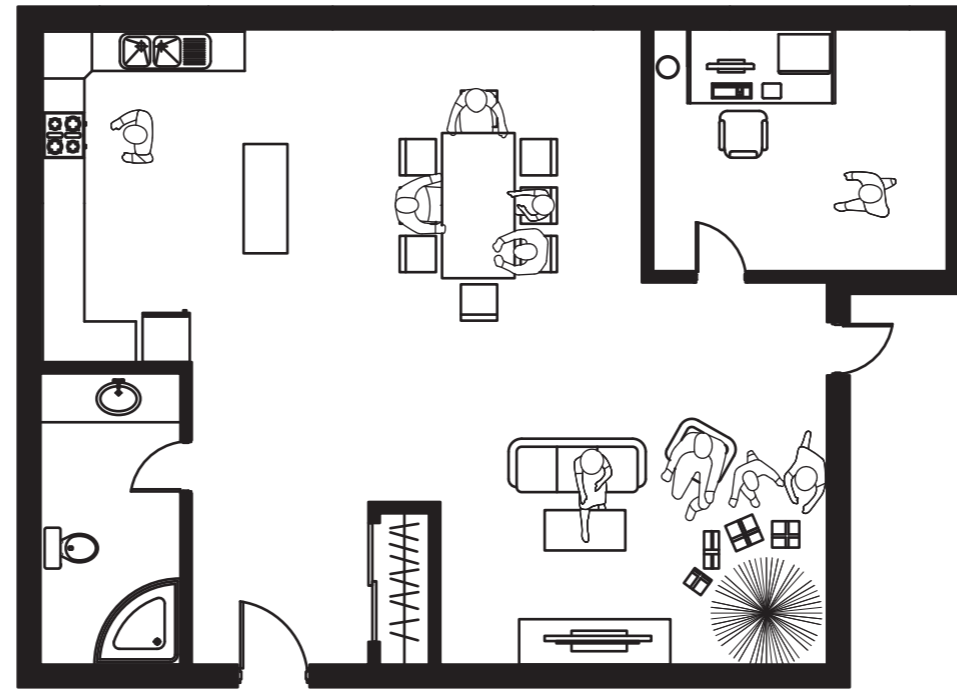
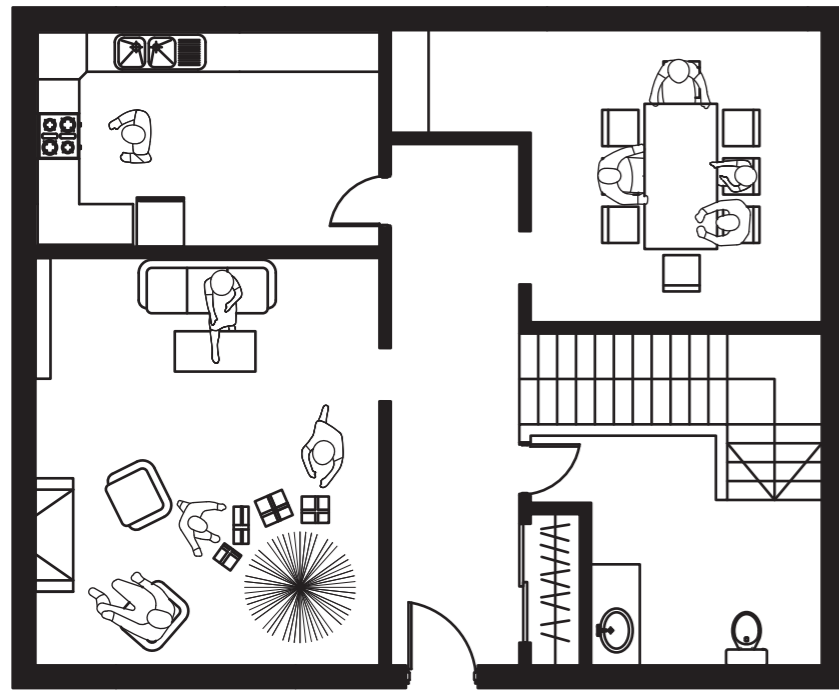


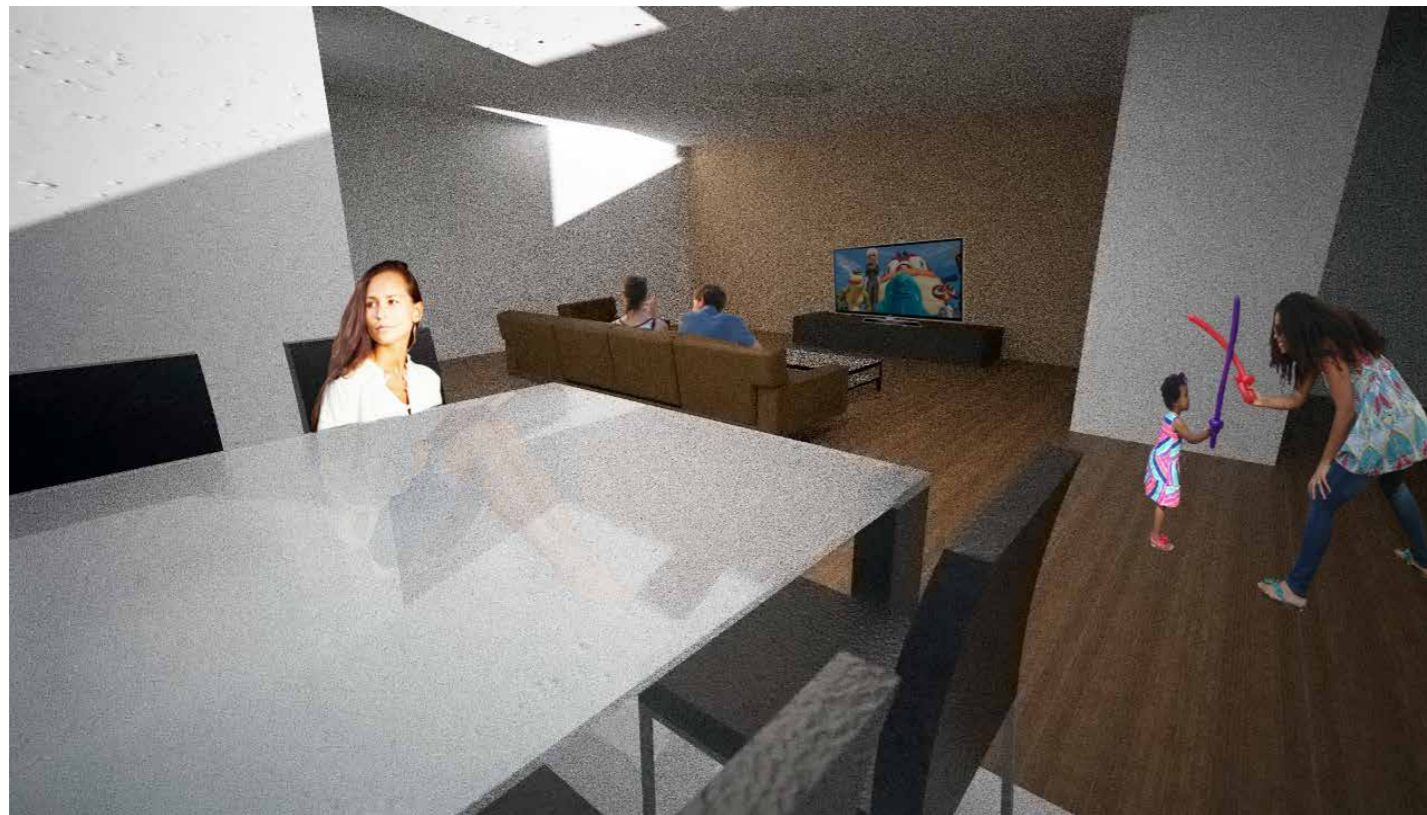
A 'symbiotic' relationship exists between architecture, the people and the community.

IT`S ALL ABOUT THE PEOPLE

What is a house? A house is simply a structure, whereas a home is where the heart is. However what makes a house a home is unique to each individual. The familiarity of certain aspects of a house stems from a particular association of memories to a space formed through our lives. The dining room becomes the site for Thanksgiving dinners, the living room for games of Monopoly and presents on Christmas morning.



The influence of people and memories is reflected in architecture over time.



Power is in the hands of the public to create spaces based on one's experiences.

Our vision of architecture is one where it becomes a medium for propagating design, giving power to the hands of the people and community. It is through one's emotional connection and depth to a house that renders its significance. Architecture may exist without site or program but without people it ceases to have meaning.

And so exists this relationship which is fundamentally based upon the people, capturing invisible beauty of human interaction.