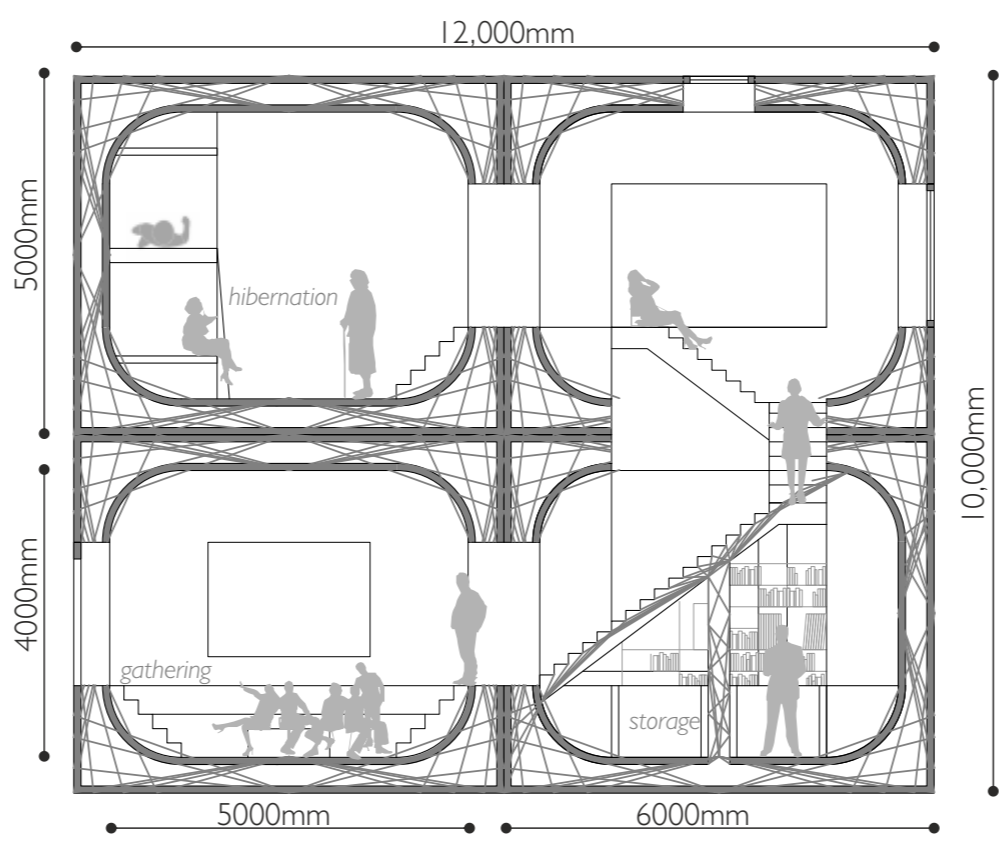
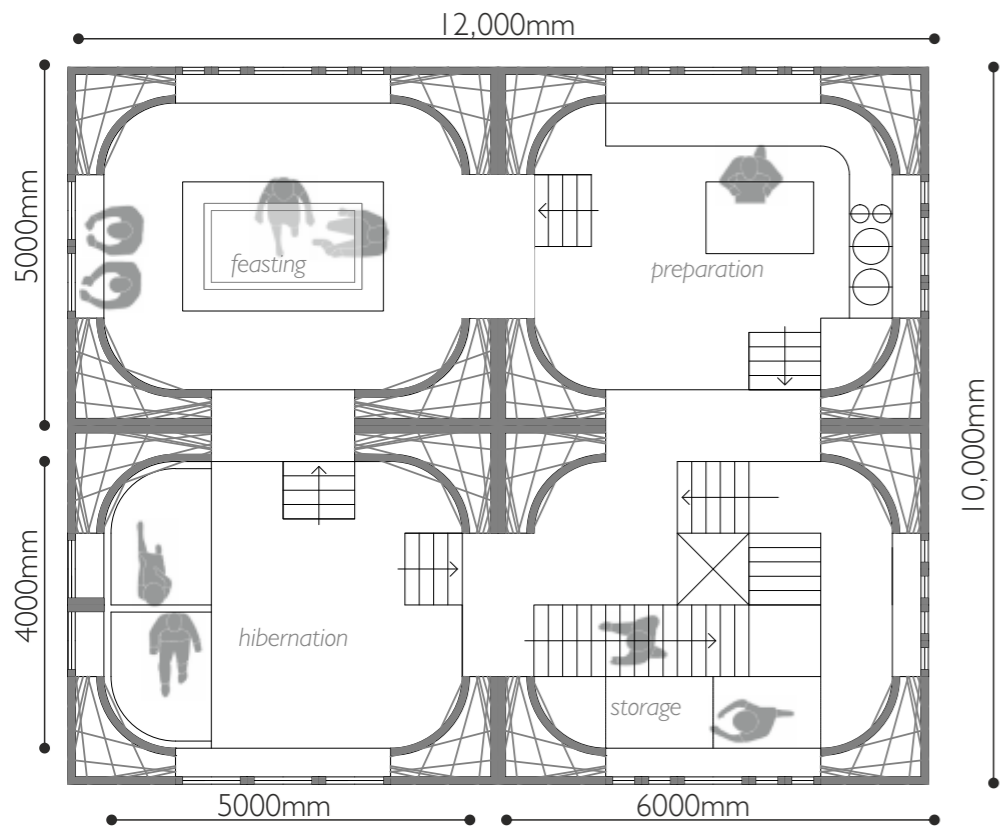


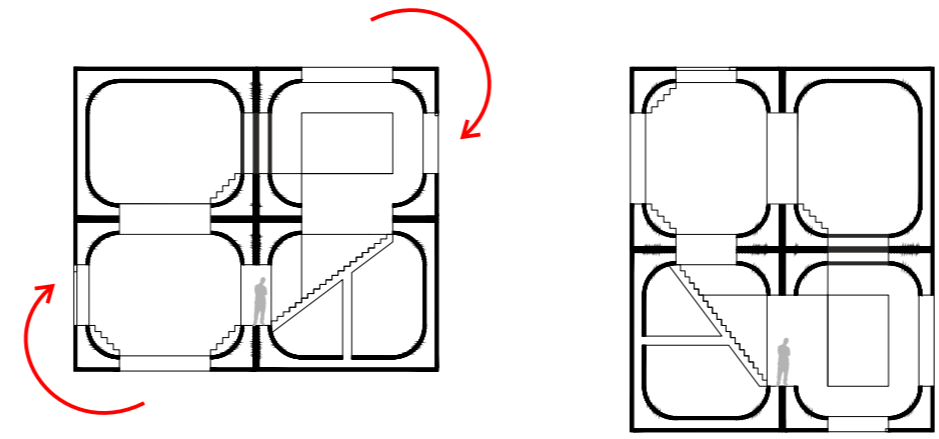
LOWER LEVEL PLAN OF A 4-MODULE HOME



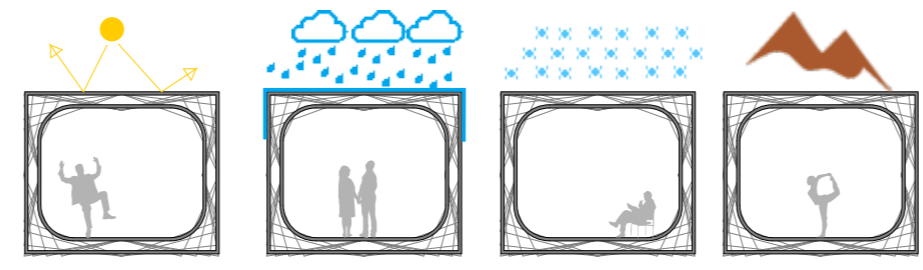
SECTION OF A 4-MODULE HOME



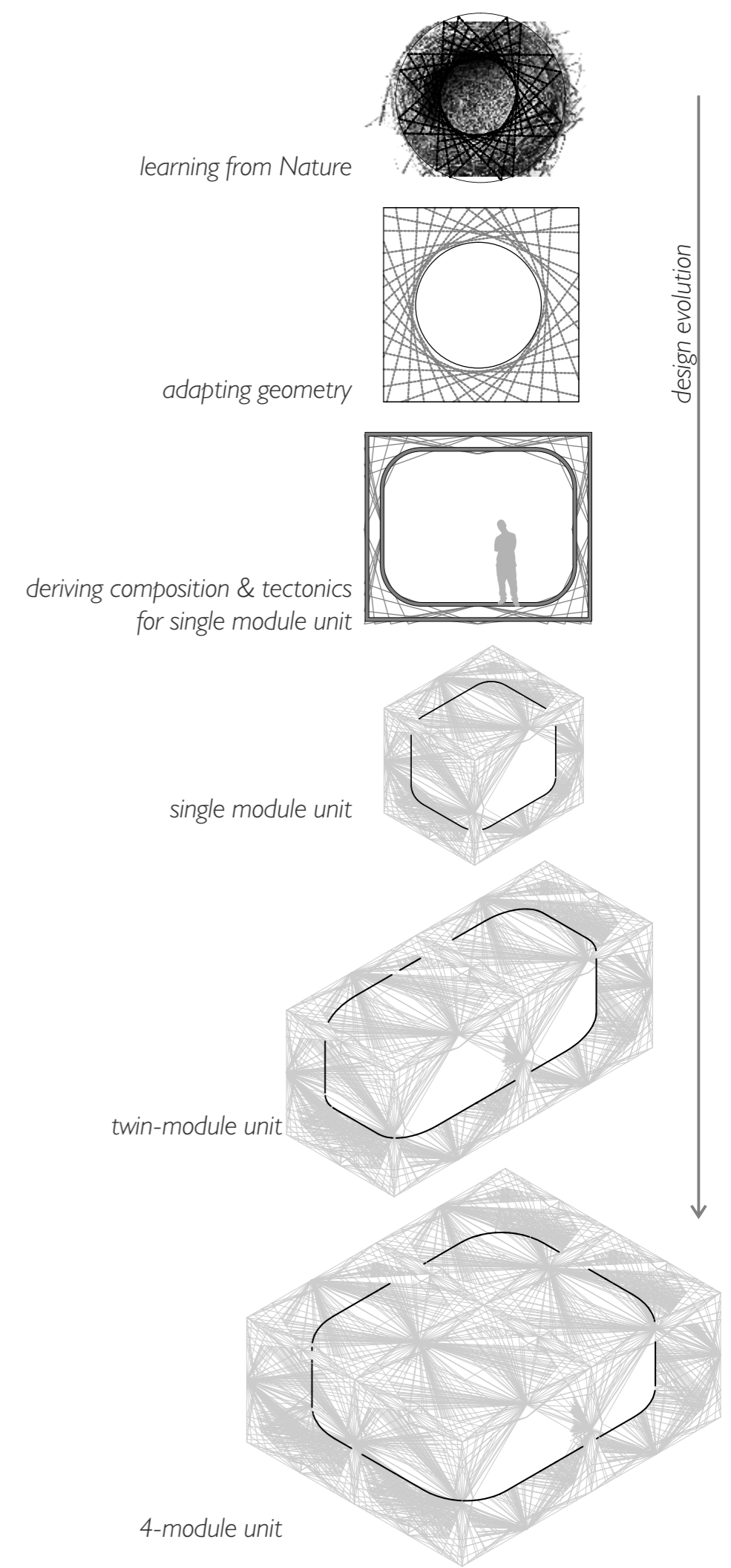
UPPER LEVEL PLAN OF A 4-MODULE HOME



Modules allow space functionality, despite a change in axis



Module uses native materials to resist weather and terrain variations



Nature has always been the best source of inspiration in architecture. Animals build their homes using native materials, ingenious engineering skills and a penchant for aestheticism, while fulfilling the most absolute purpose of a house – safety. We learn, from the simple yet inventive building process of a bird's nest, that composition and tectonics play vital and dual roles in structure and aesthetic in achieving this purpose. In response to this brief, a house for humans has been designed, that uses these teachings from nature. The shelter, has been designed to cope with weather and terrain variations, by allowing modulation of space & functions but keeping structure & form constant. A basic module of 30 sq.m. area is designed, which can be combined with multiple modules to create limitless variations. Specific site conditions and contexts, will affect the materials and spatial hierarchy without the alteration of the module's tectonics.