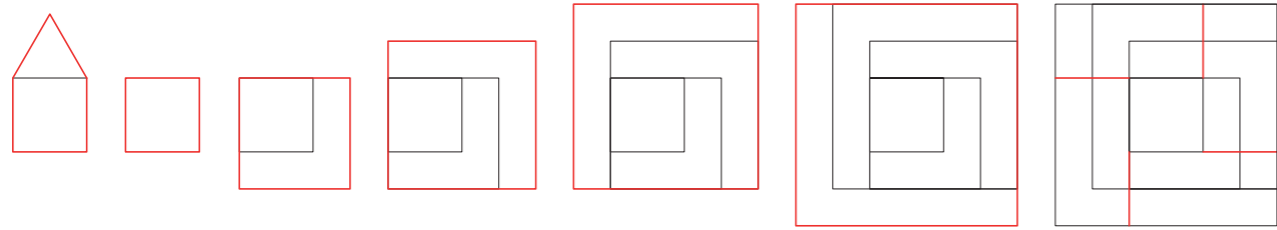


SPIRAL



CUBE



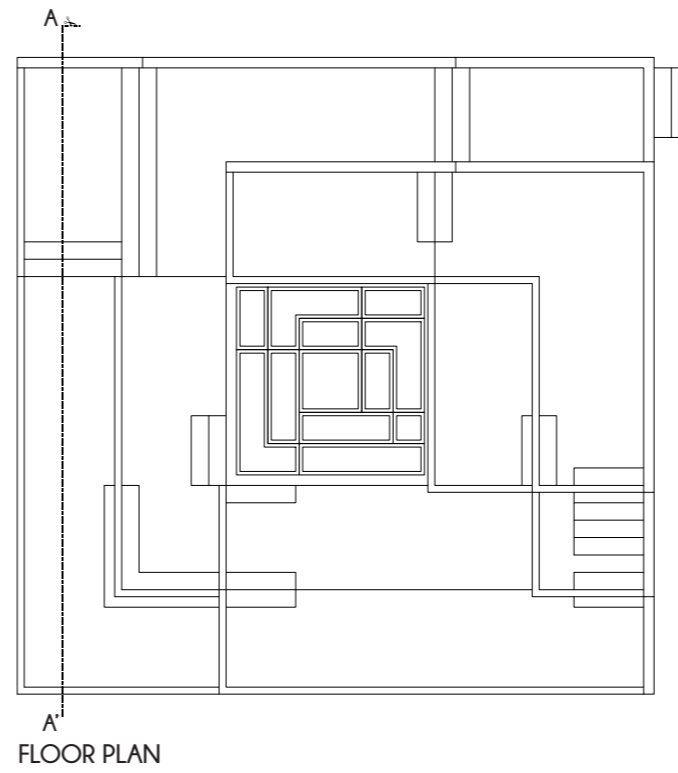
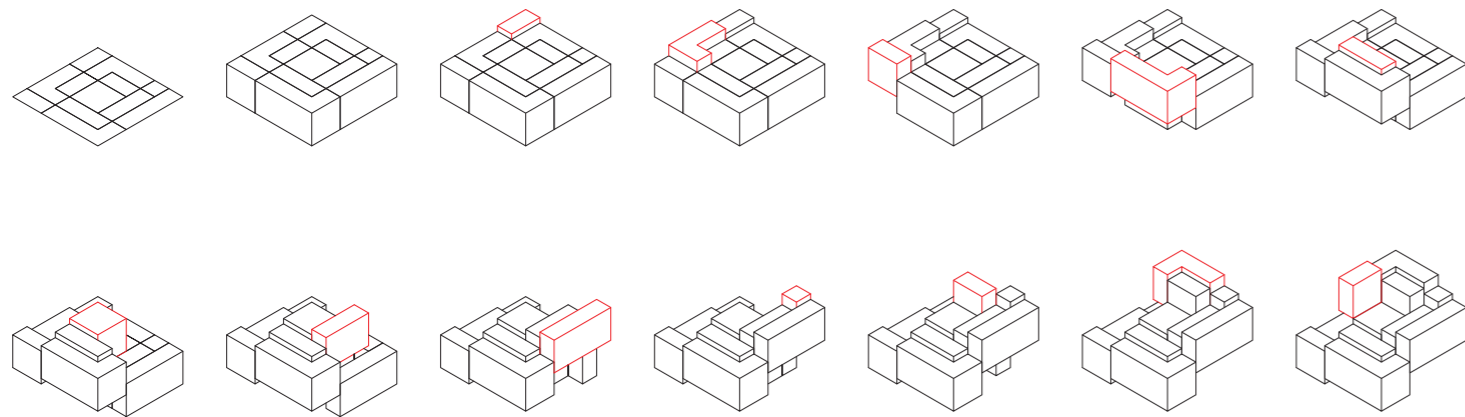
AS KIDS, THE FIRST "HOUSE DESIGN" THAT WE TAKE AS THE PROPEST TAKES ONLY TWO GEOMETRICAL PIECES IN ACTION, THE SQUARE, AS A MATTER OF LIVEABLE SPACE, AND THE TRIANGLE, AS THE PROTECTOR.

YEARS PASSED BY AND NOW WE KNOW THAT A HOUSE CAN COME IN ALL KINDS OF SHAPES, THOUGHT THIS FIRST IDEA REMAINS IN OUR HEADS, SO, WHY NOT TAKING THAT LIVEABLE SPACE INTO A NEW LEVEL?

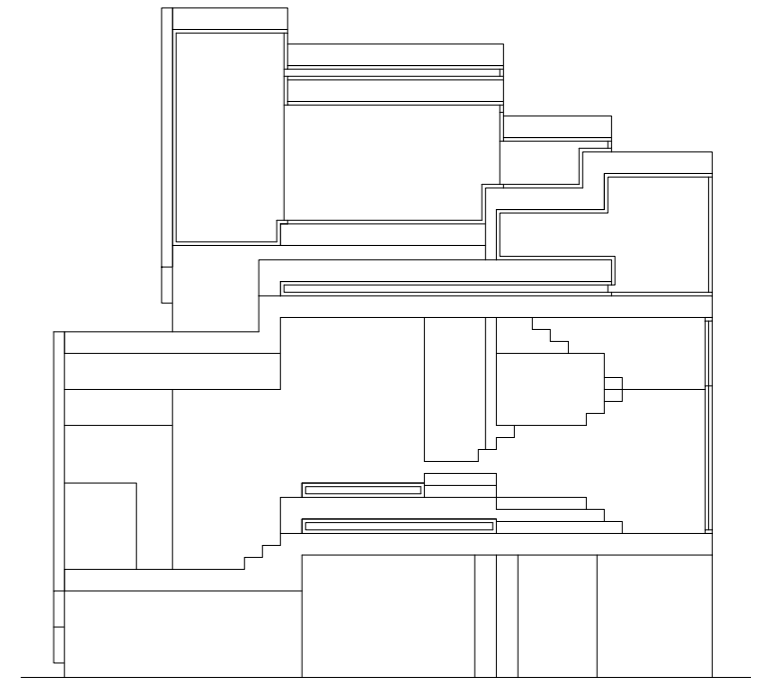
APPLYING A "SPIRAL REVOLUTION"\* TO THIS BASIC GEOMETRY, NEW SPACE APPEARS SURROUNDING THE PRINCIPAL STAGE WHICH FLOWS WITH AND THROUGH IT, BECOMING A WHOLE.

\*THE TERM "SPIRAL REVOLUTION" IS A TERM CREATED IN THIS PROJECT REFERED TO THE WAY THE ORIGINAL DESIGN PATERN FOR THE HOUSE WAS CREATED, BEING THAT PROCESS THE ACTION OF SURROUNDING THE INITIAL SQUARE WITH 4 MORE SQUARES, EACH OF THEM BEING BIGGER THAN THE PREVIOUS ONE, FOLLOWING THE NEXT ARIST FORMULAS:

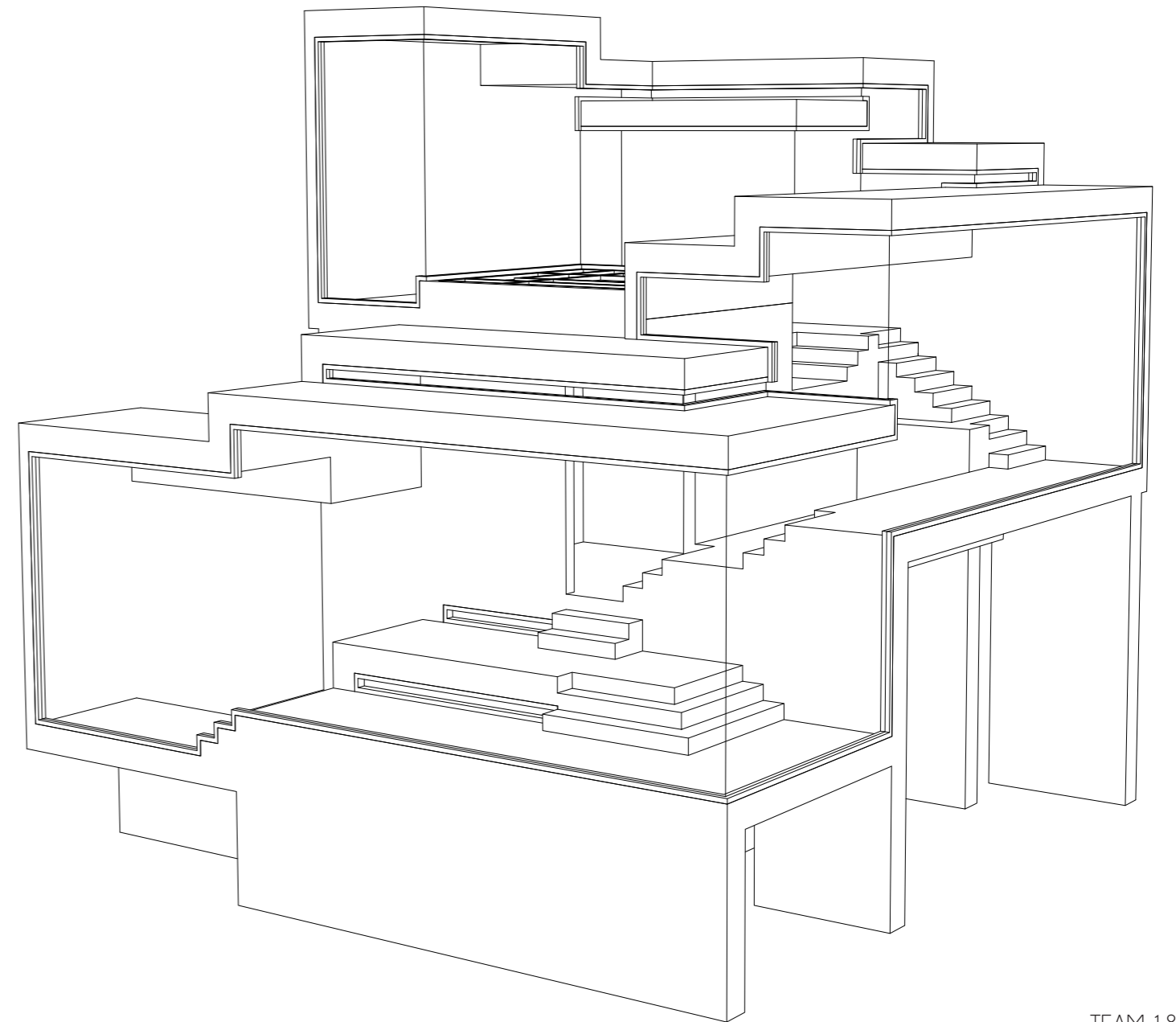
2<sup>ND</sup> SQ:  $B=A+A/2$     3<sup>RD</sup> SQ:  $C=A+A$     4<sup>TH</sup> SQ:  $D=A+3A/2$     5<sup>TH</sup> SQ:  $E=A+2A$



FLOOR PLAN



A-A' SECTION



FLOOR PANELS DELIMITATION

ENTRANCE AND ELEVATION WAY

DESIGN TROUGH THE PATTERN

FULL CRISTAL WALLS

