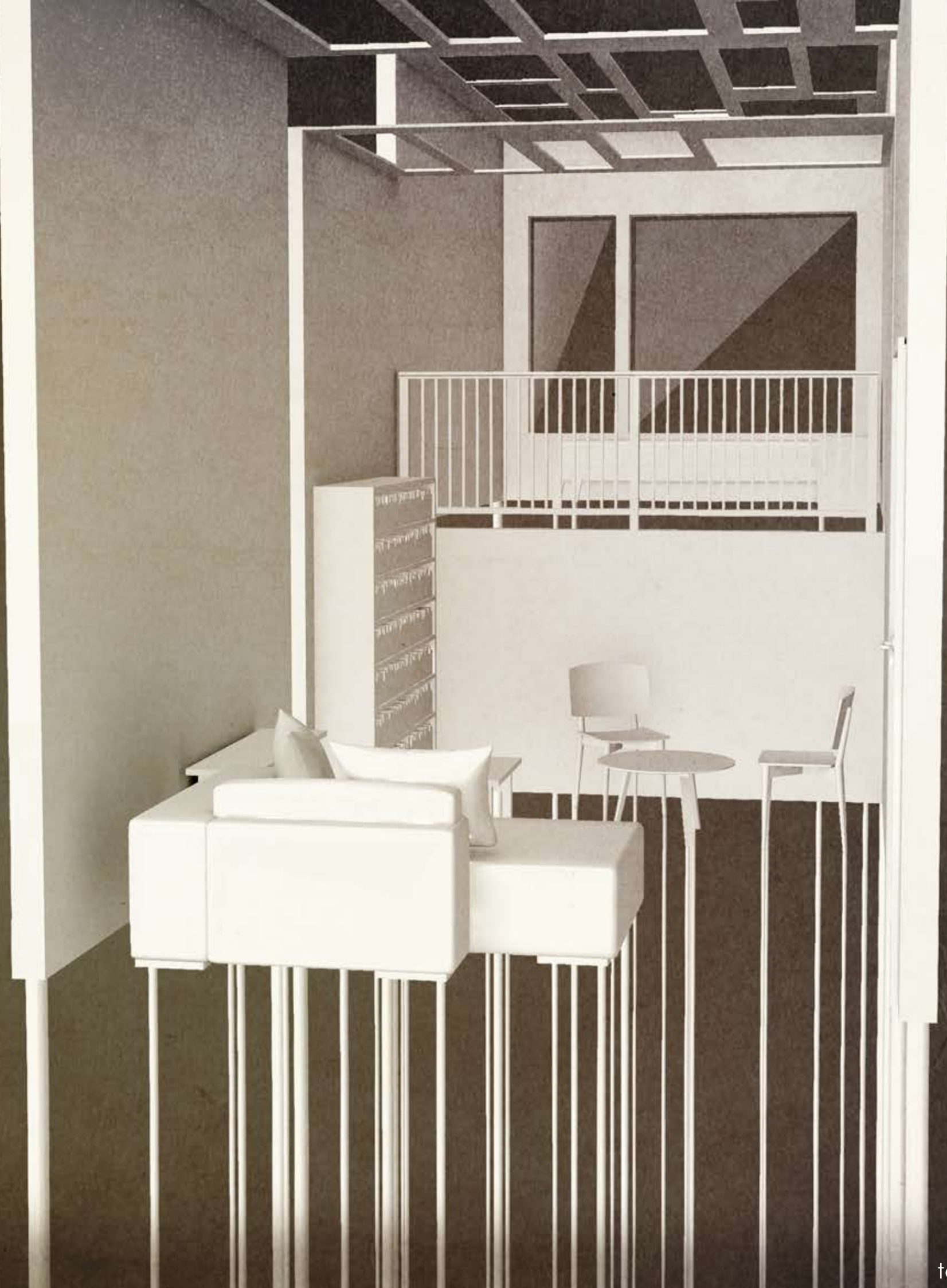


"A BUILDING IS A WORK OF ART
ONLY AS FAR AS IT SIGNIFIES,
MEANS, REFERS, SYMBOLIZES IN
SOME WAY"

– Nelson Goodman

*Ce n'est pas une maison
| This is not a House*



WHAT DOES A HOUSE STAND FOR? IS IT MERELY A BUILDING OR IS IT ARCHITECTURE?

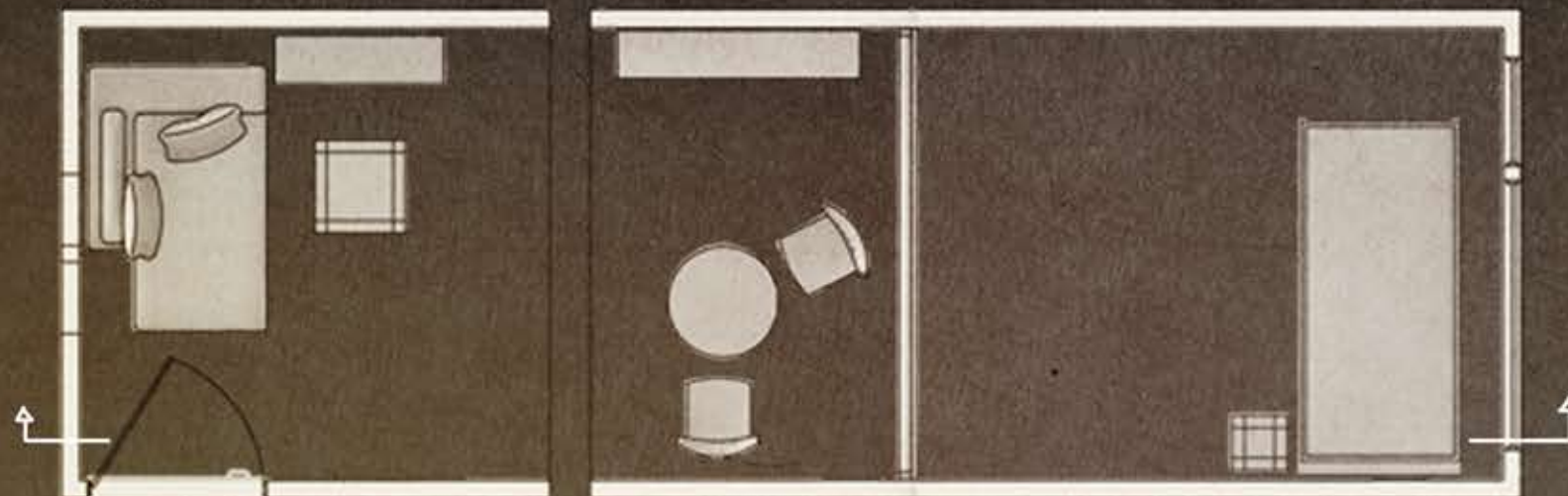
ON AN IMAGINARY SITE, DEFINING THE VERTICAL AXIS WE SET UP BOXES WITH GEOMETRY ON STILTS RAISED ABOVE A PLANE. DESIGNED WITH SPACES OF CHARACTER THAT A CONVENTIONAL HOUSE HAS BUT WITH *HINDERED FUNCTIONS* LIKE *SLITTED ROOF* WHICH LET LIGHT, RAIN, SUN ALL IN (WHAT IS A HOUSE THAT DOESN'T SHELTER YOU FROM NATURE !) AND *NO STAIRCASE* BUT *LEVELS* (*INACCESSIBILITY*) AND *NO FLOOR* BUT *FURNITURE ON STILTS* (*NO CIRCULATION*).

THIS HOUSE IS A *SCULPTURAL EXPRESSION* TO ALL THE HOUSES PLACED ANYWHERE, EVERYWHERE.

TWO STILTS LIE NEAR THE STRUCTURE AS A *MOCKERY* FOR HUMANS TO USE FOR *CIRCULATION* IN THE HOUSE.

YES. IT IS POSSIBLE TO IMAGINE ARCHITECTURE WITHOUT SITE. THIS DESIGN IS WITHOUT SITE. BUT THE IMPACT OF IT WILL BE VARYING FOR DIFFERENT SITES. SINCE IT IS INDEPENDENT OF THE SITE, THE INITIAL SPATIAL QUALITIES ARE UNAFFECTED, BUT WHEN A SITE IS PROVIDED, THE SITE'S SPATIAL QUALITIES WILL RESPOND IN INNUMERABLE WAYS.

PLAN



SECTION

