

FADING SENSES

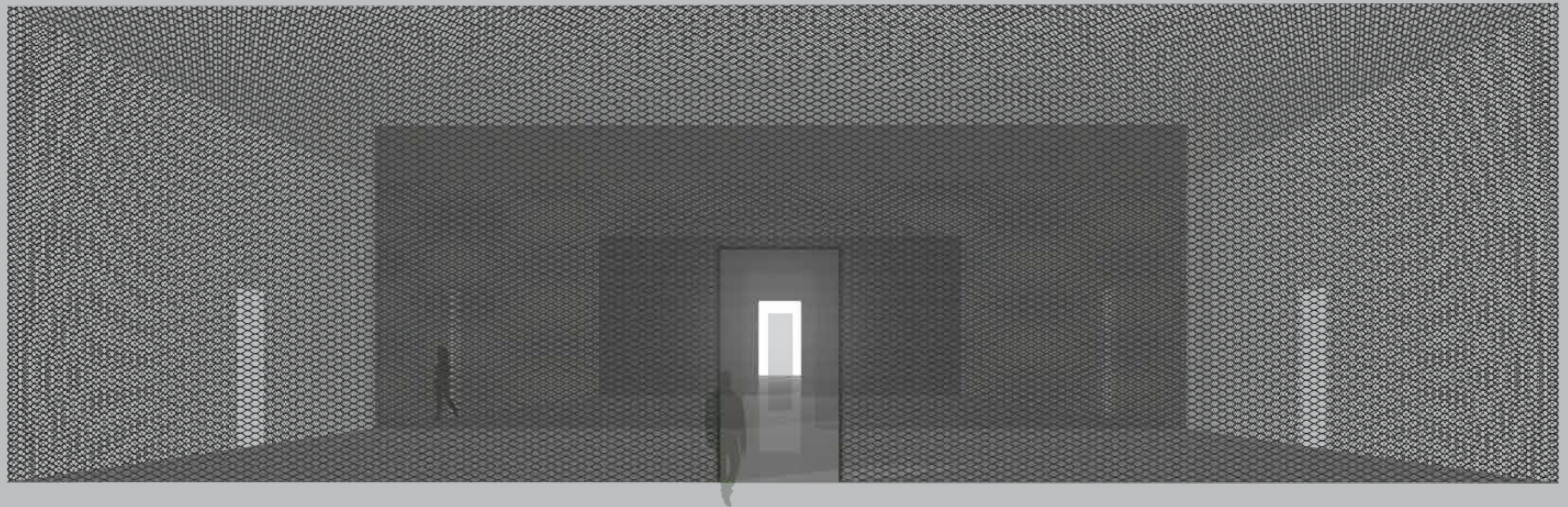
A house should be composed in layers of tectonics that serve human's senses. Without interacting with surrounding physical elements, the house makes it possible for us to put a pure thought on tectonics in its most fundamental relationship to a human. It is possible to think about architecture without a site and programme. In this case, a house without function, layer by layer, discards context.

Intensifying opacity of the surfaces toward the inner core implies an increase of intimacy as one walks toward it.

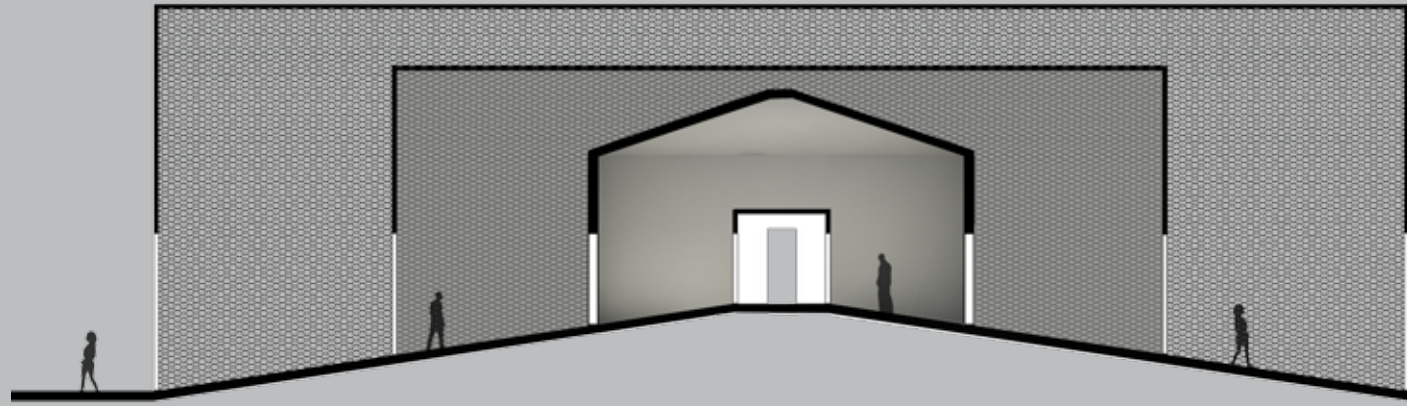
The primary space isolated from the outer factors symbolises the instinct of a human to shield itself from the outside world and to make its own atmosphere.

People can even choose to go to harshest artificial environment while forgetting nature's softness.

The lightbox at that moment reminds us of how tender nature is to mankind.



SECTION



THE LIGHT BOX

PLAN

