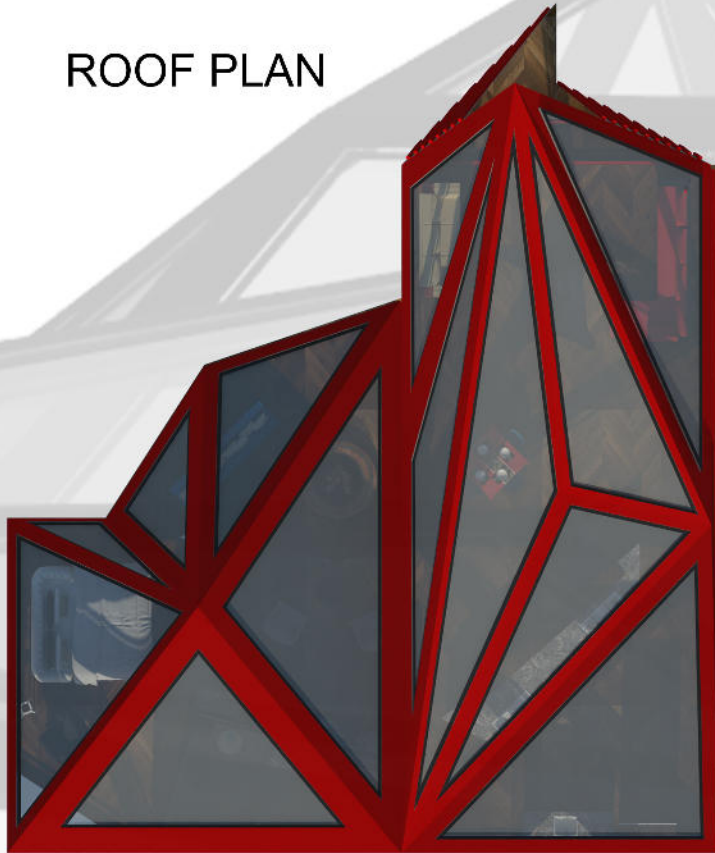


Crimson peak

Sitting amidst a mountain range overlooking a lake. The structure incorporates a combination of steel and glass so as to blend it with the immediate environment at an elemental level. The red colored steel framing is inspired by the angular mountain range that forms the background of the structure. The predominance of the glass is a result of both aesthetics and convenience. The glass and the angle is broken at the ceiling helps the sky light enter the structure better thereby energizing the space. The geometry of the house frames a multiplicity of different and specific views, and builds up content spaces that inhabit large framed views. From the interior the experience of the house is continuous: from any point of the house one feels closely related to the immediate milieu. It has properties of anti snow replant which doesn't allow snow to stagnate on the structure and thus providing a clear 360degree view.



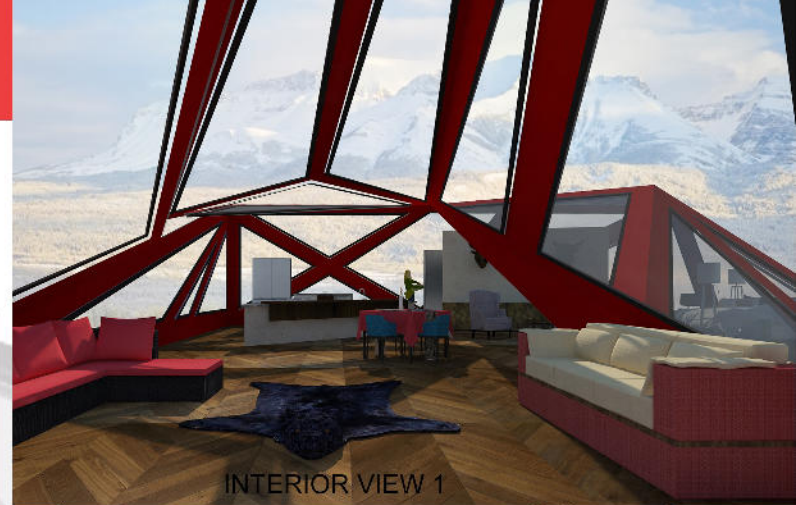
ROOF PLAN



FLOOR PLAN



A



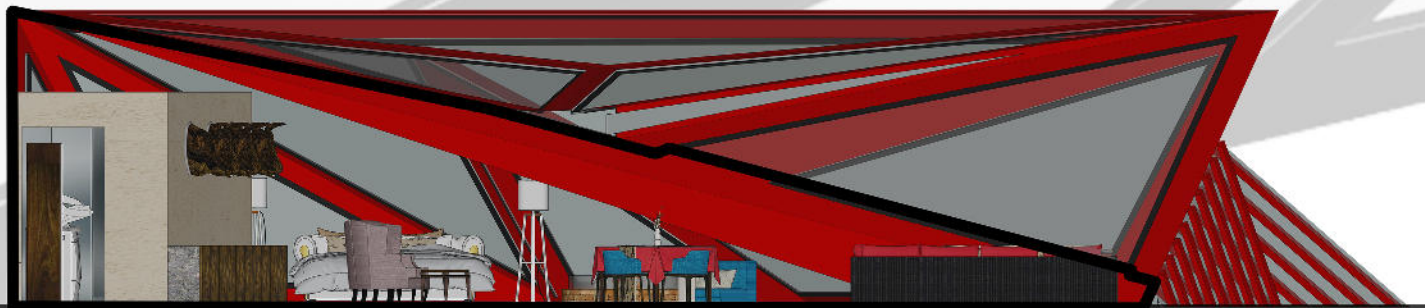
INTERIOR VIEW 1



INTERIOR VIEW 2

SECTION A-A'

A'



INTERIOR VIEW 3