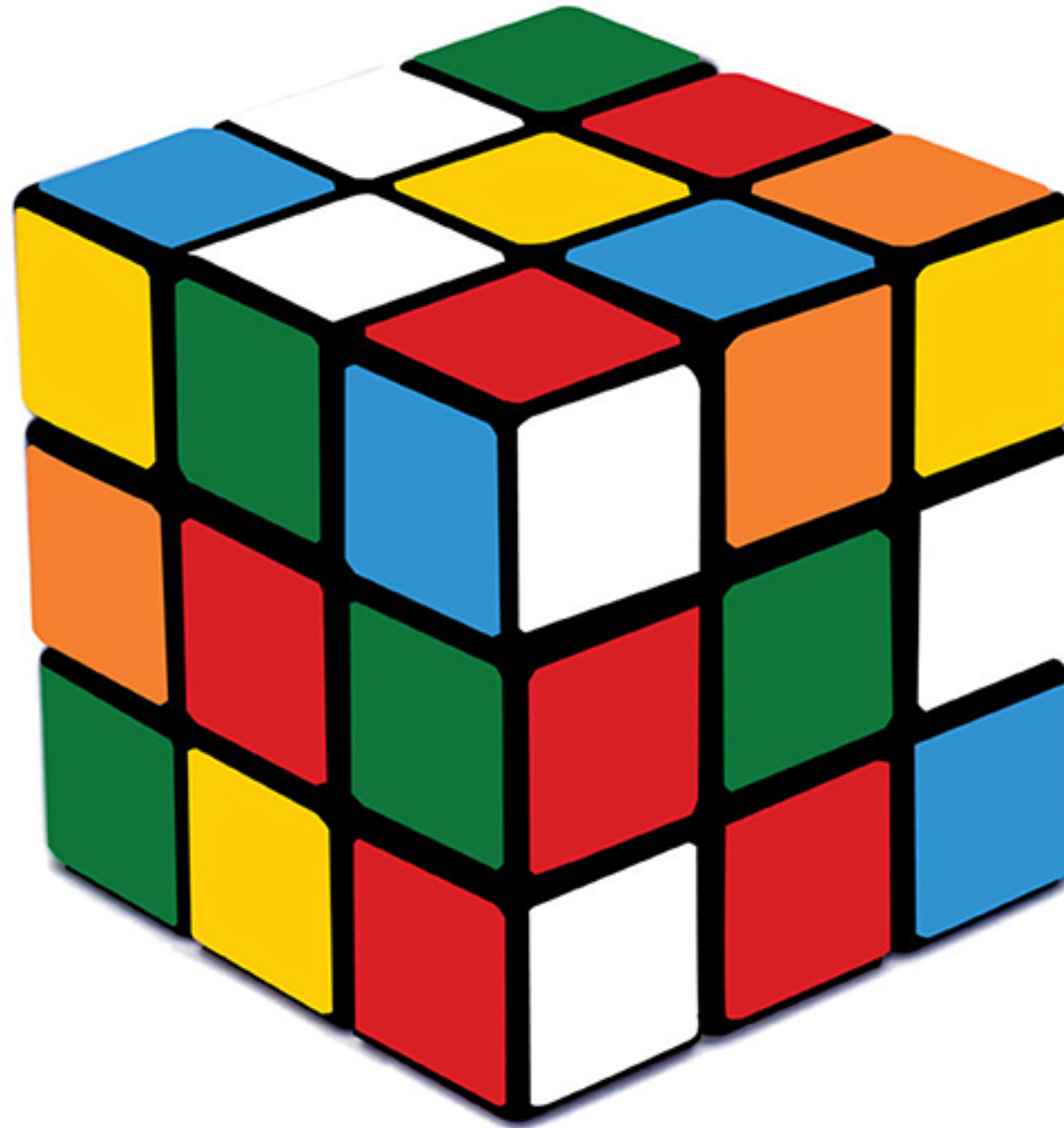


# RUBIK HOUSE

A SPACE WITH NO FUNCTION

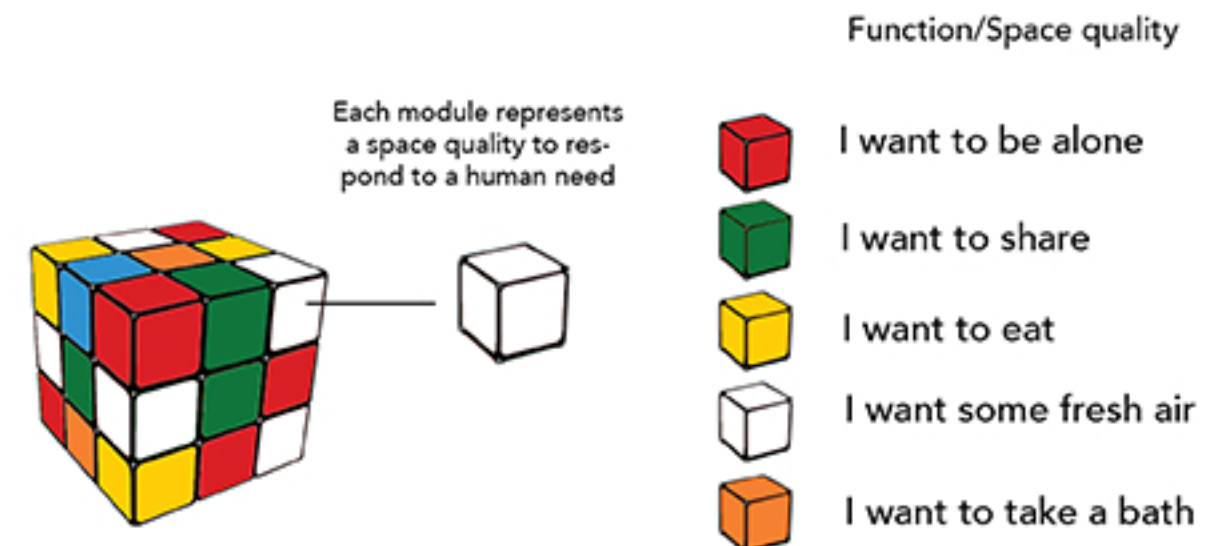
=

A SPACE CAPABLE OF MULTIPLE FUNCTIONS



When talking about architecture, a space with no function does not exist because eventually the user will find one. For that reason when we talk about a space with such particularity as not having a defined program, in the eyes of a designer we are dealing with a space that has to be capable to take multiple configurations and adapt to satisfy the needs of the user, whichever they may be. This is why for this exercise we took as reference the classic rubik cube, capable of combining in 43.252.003.274.489.856.000 different ways, and adapted it to the concept of a house; thus, proving with the study of the rubik house that it is possible to have configuration flexibility without sacrificing space quality.

## Adaptation of the rubik cube

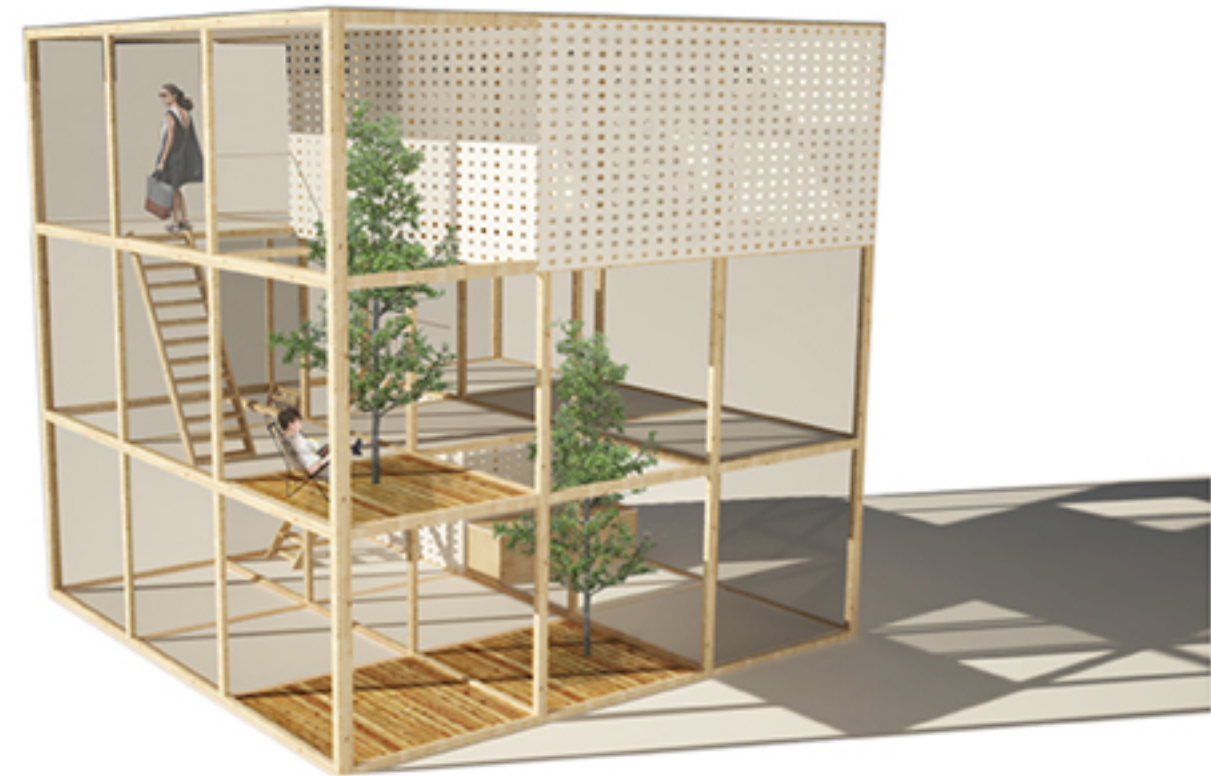




Prototype1



Prototype2



Schematic plans



Schematic plans

