

# STONE AGE!



We have been conditioned to think of the luxuries of daily life as our needs. If we shed that brain washed layer from our skin - we emerge as very simple beings - scared of the unknown and looking for a shelter to feel safe. In this project I tried to give you a glimpse of what I feel a house should be. A space that we design ourselves when needed or wear as our 2nd skin. A house that knows us and keeps us safe physically and psychologically.

- Space crunch  
- Low Happiness Index  
- Poor QoL to name a few.

# WHAT WILL BE.

\$\$\$\$\$\$



UNCONTROLLED GROWTH

NEEDS VS. LUXURY



Technology

SMART CLOTHING

There have been some breakthrough inventions in the past century like Smart Materials and Clothing. Why can't we take this promising technology and integrate it with architecture?

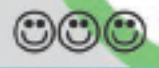
WEAR YOUR HOUSE

STILL NOMADS

By integrating smart clothing with architecture - Not only can we fix thousands of environmental and health problems but we can give each individual their own skin to live their life in.

A skin that we wear all day. Material that changes according to our needs, our mood, our situation. A house that we can assemble where we want and when we want.

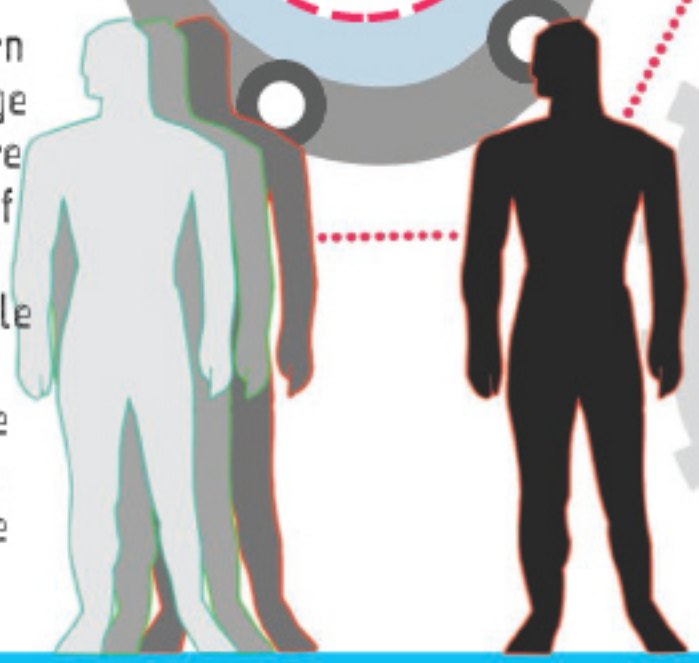
You like curves? Give your house a Bernini fold.  
You like rigidity? Make it a square.  
You SIZE & SHAPE it.



How long have you wanted to sleep under the open sky while feeling safe? You walk, talk and travel with your house. Imagine the daily problems this will solve.

EVERY SPACE WAS PERSONALIZED  
NATURE'S BELLY  
NOMADS TEMPORARY INHABITORS  
CAVES REST SHELTER

Smart Materials in the future will be worn as skins. They can change their molecular structure according to the need of the user. Due to high elasticity they will be able to expand and create personal spaces for the user to sleep and take shelter. A custom space for every user.



TEAM - 1892

WHAT CAN BE.

A BETTER FUTURE IS MY VISION FOR ARCHITECTURE

## HOW TO

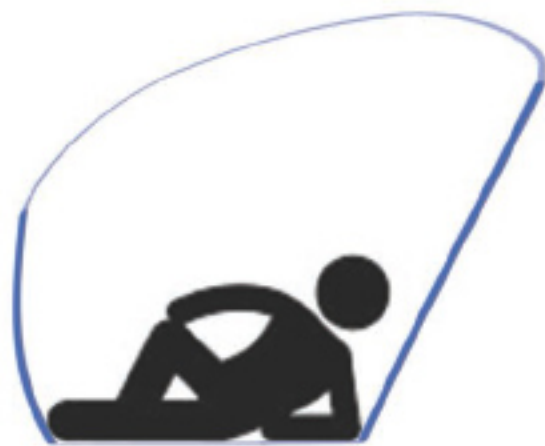


Worn on bare skin. The material reacts and changes with mood, body temperature thus changing its properties.



Adrenaline rush or hike in body temp. lead to the material forming a protective layer on the body.

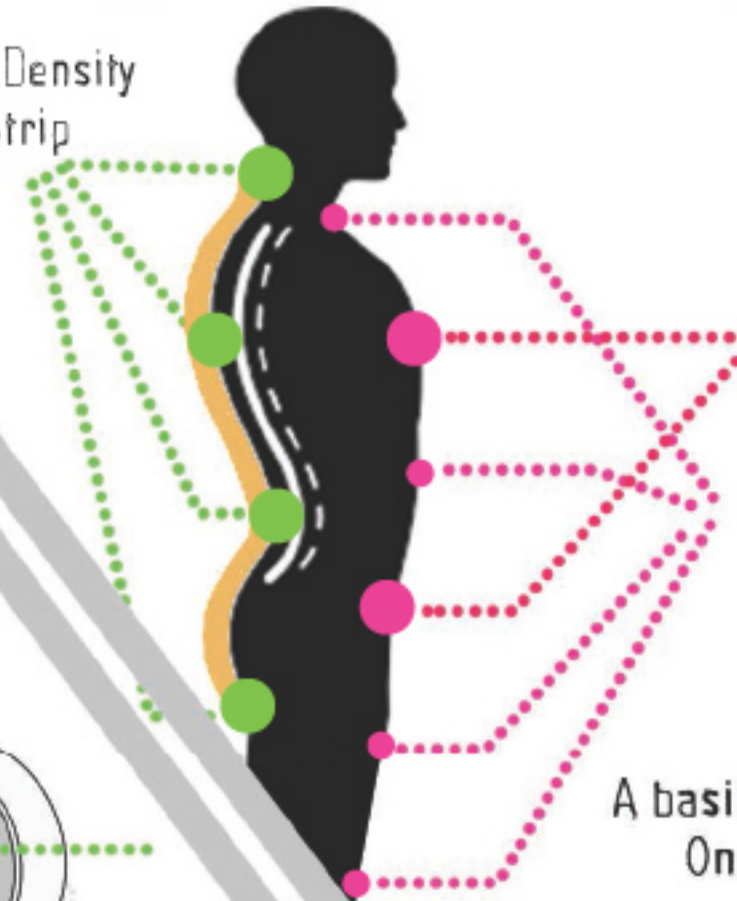
When the body needs rest. The user can take it off and stretch it out the way he wants to make space for himself. Elasticity of the material ensures it does not undergo wear and tear after property and shape transformations.



## FRAMEWORK & DESIGN

Along the most vulnerable axis of the body. Which needs max. protection and support while rest is the fixed strip.

High Density Strip

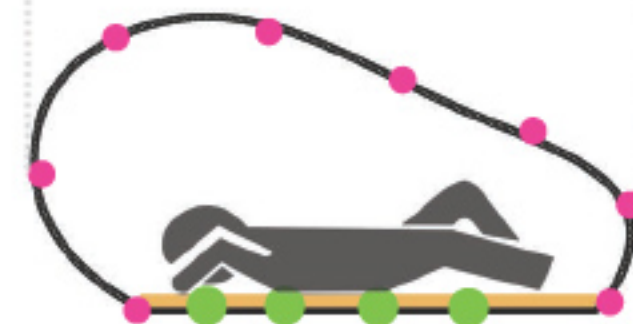
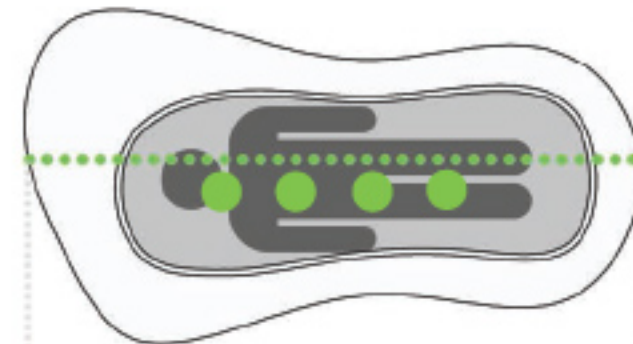


Material made up of molecules which respond to various stimuli and change their molecular structure. High and Low molecular density nodes are placed along the body. These frame the space when reshaped by the user.

High density nodes which can be used to shape the space.

The expandable nodes which can be used to stretch out the material along the whole body

A basic framework had to be designed One that is fixed for all sizes.



PROTOTYPE

We are limited by our imagination. If we let go we will eventually discover that we don't need to be bound by site.

Functionality of a space should be responsive to the person using it.

TEAM - 1892