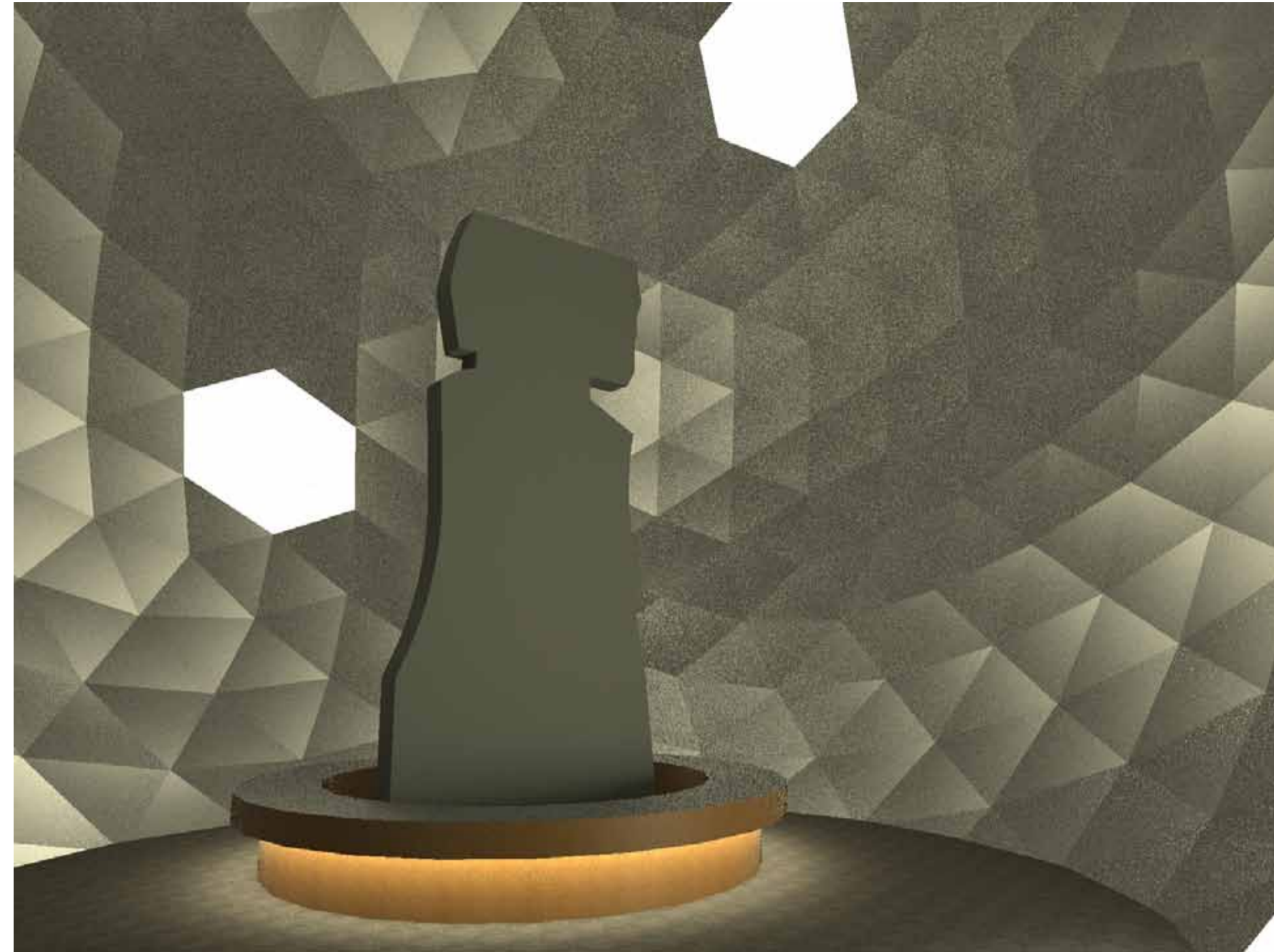




In a country where the limits between day and night merge together, the architecture expands the boundaries of time, using solar power.



Organised around the already existing sculpture, the *in situ* point of reference, the inside area of the sphere evokes an experience of darkness, contrasting the «absence» of night in Oslo.

Linked with the topography and the festival's organisation, the implementation of the «Moon» creates a meeting point, going beyond the festival's scale, through its captive visibility and the proposed experience.

During the day, the PV glazed sphere harvests the solar power. By the twilight, the rotating mechanism with the PVs reveals a bright Moon, generates the «night» and indicates the beginning of evening's concerts.

